



#59 - FOR SALE*
3 Bed+Den | 2 Bath | 3 Car RV Garage

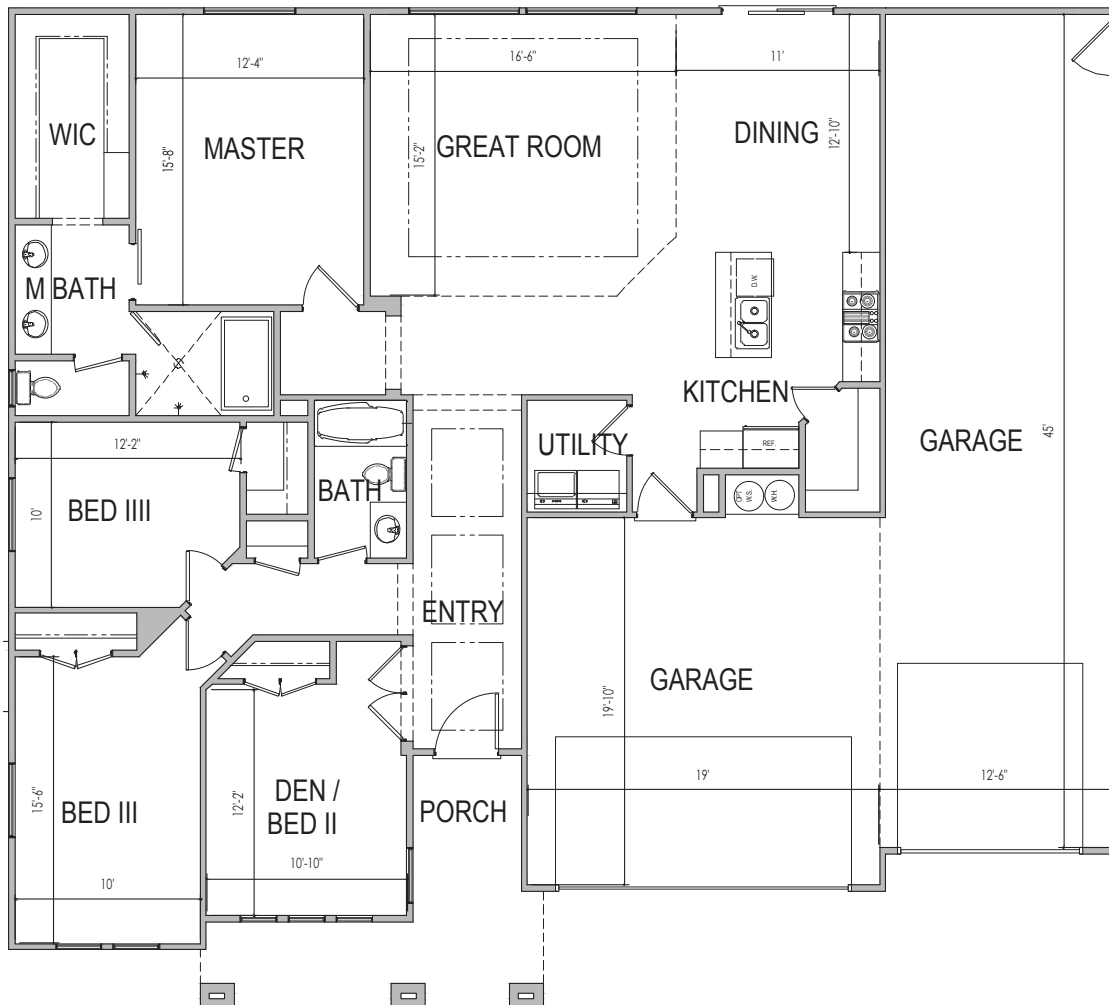
S&S Homes
www.sshomes.info

679 S. Goose Creek Drive
Washington, UT 84780



60'x55'

1,861 ft.²



*Prices, estimated completion dates, elevations, styles, colors, features, and finished homes may vary from the architectural rendering and are subject to change without notice or obligation. *Square footage is estimated. [Scan QR CODE for more information on available homes and neighborhoods.](#)



Agent: Lori Johansson
(435)669-8618 - lori@ssrealtysolutions.com



MULTIPLE LISTING SERVICE
MLS



S&S Realty
SOLUTIONS

