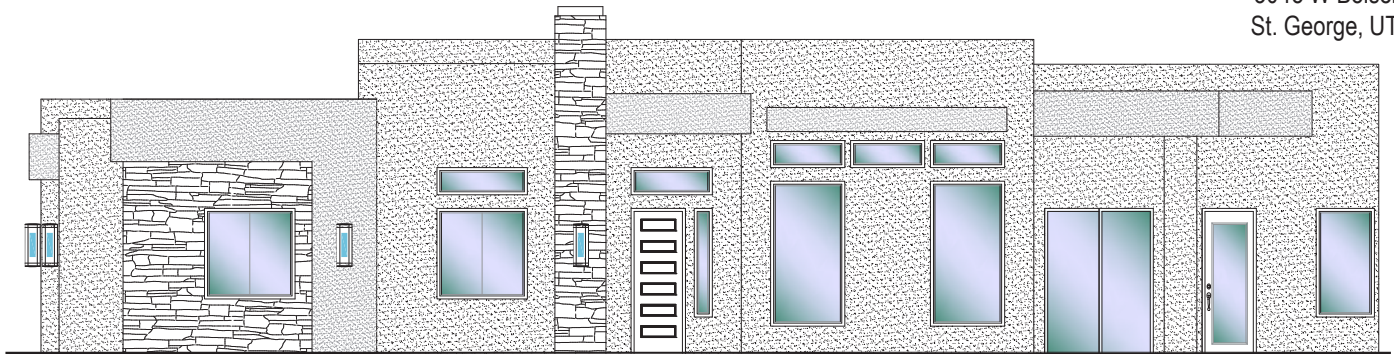




#58 - FOR SALE*
3 Bed | 2.5 Bath | 3 Car Garage

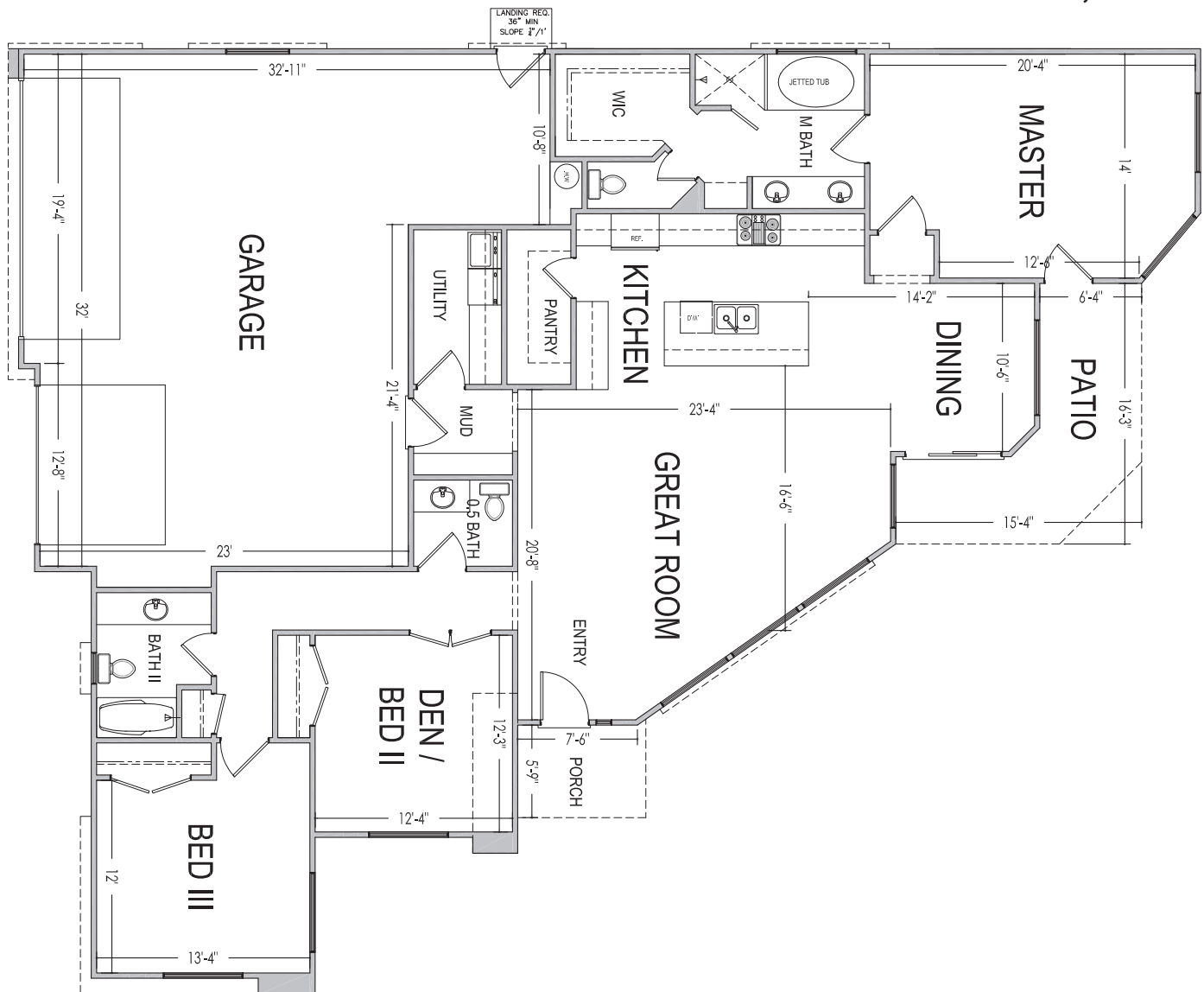
S&S Homes
www.sshomes.info

3045 W Bolsena Way
St. George, UT 84770



59'x74'

1,957 ft.²



*Prices, estimated completion dates, elevations, styles, colors, features, and finished homes may vary from the architectural rendering and are subject to change without notice or obligation. *Square footage is estimated. [Scan QR CODE for more information on available homes and neighborhoods.](#)



Agent: Alisa Huser
(435)669-6460 - alisa@ssrealtysolutions.com

