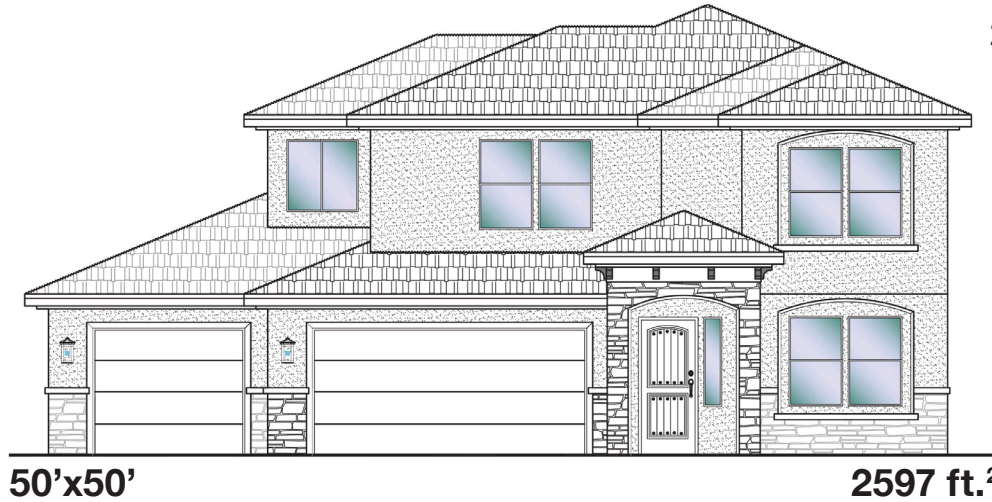




**#9 - FOR SALE\***  
4 Bed+Office | 2.5 Bath | 3 Car Garage

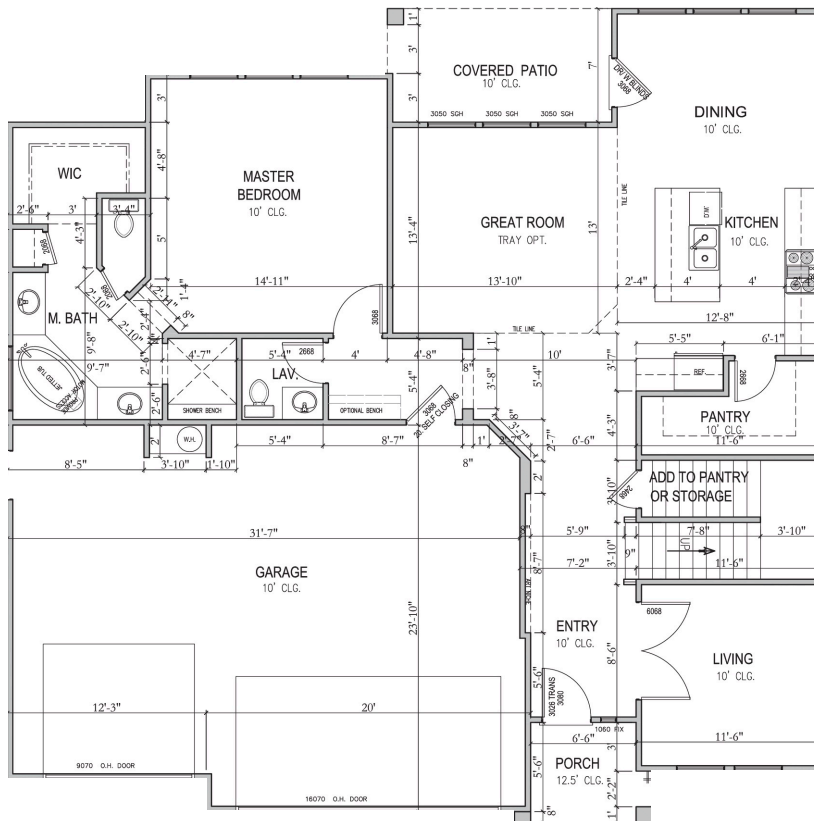
**S&S Homes**  
www.sshomes.info

2838 E. Smith Creek Dr.  
Washington, UT 84780

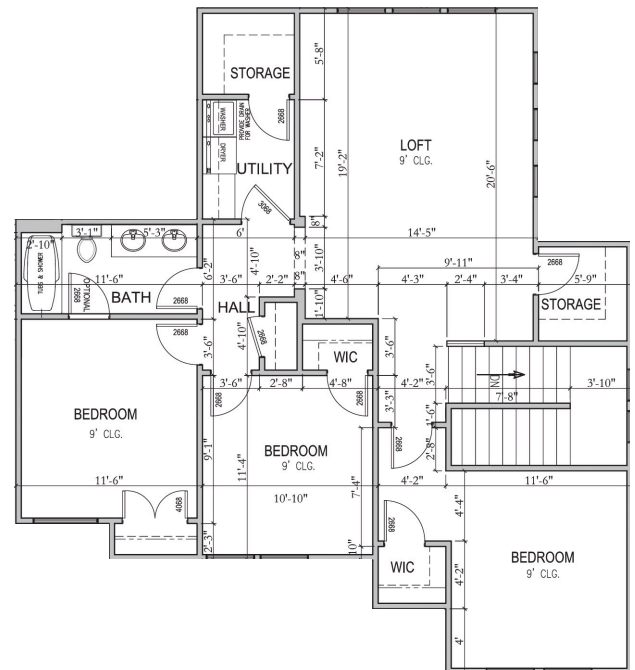


50'x50'

2597 ft.²



Main 1452 ft.²



Upper 1145 ft.²

\*Prices, estimated completion dates, elevations, styles, colors, features, and finished homes may vary from the architectural rendering and are subject to change without notice or obligation. Square footage is estimated. Scan, Download & Register for free in the NoviHome App for more information on all our homes and neighborhoods.



**Agent: Lori Johansson**  
(435)669-8618 - lori@ssrealtysolutions.com



**S&S Realty**  
SOLUTIONS