



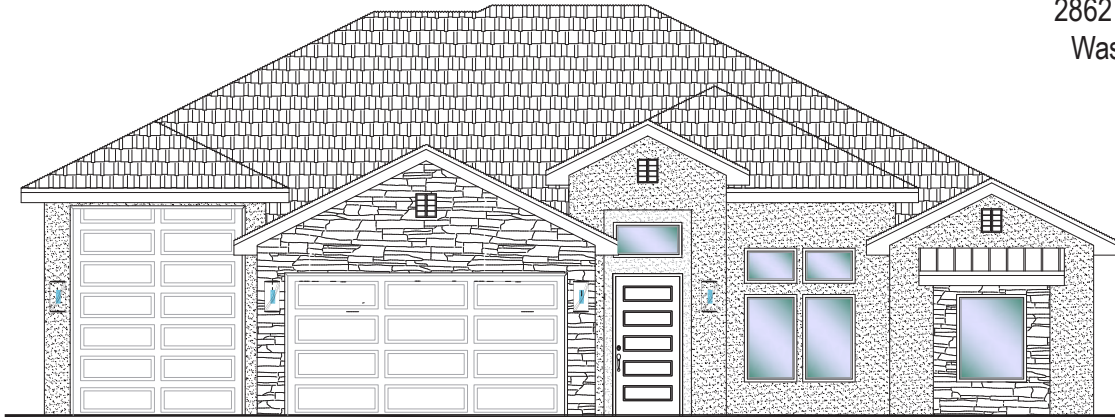
#11 - FOR SALE*

3 Bed | 2.5 Bath | 3 Car-RV Garage

S&S Homes

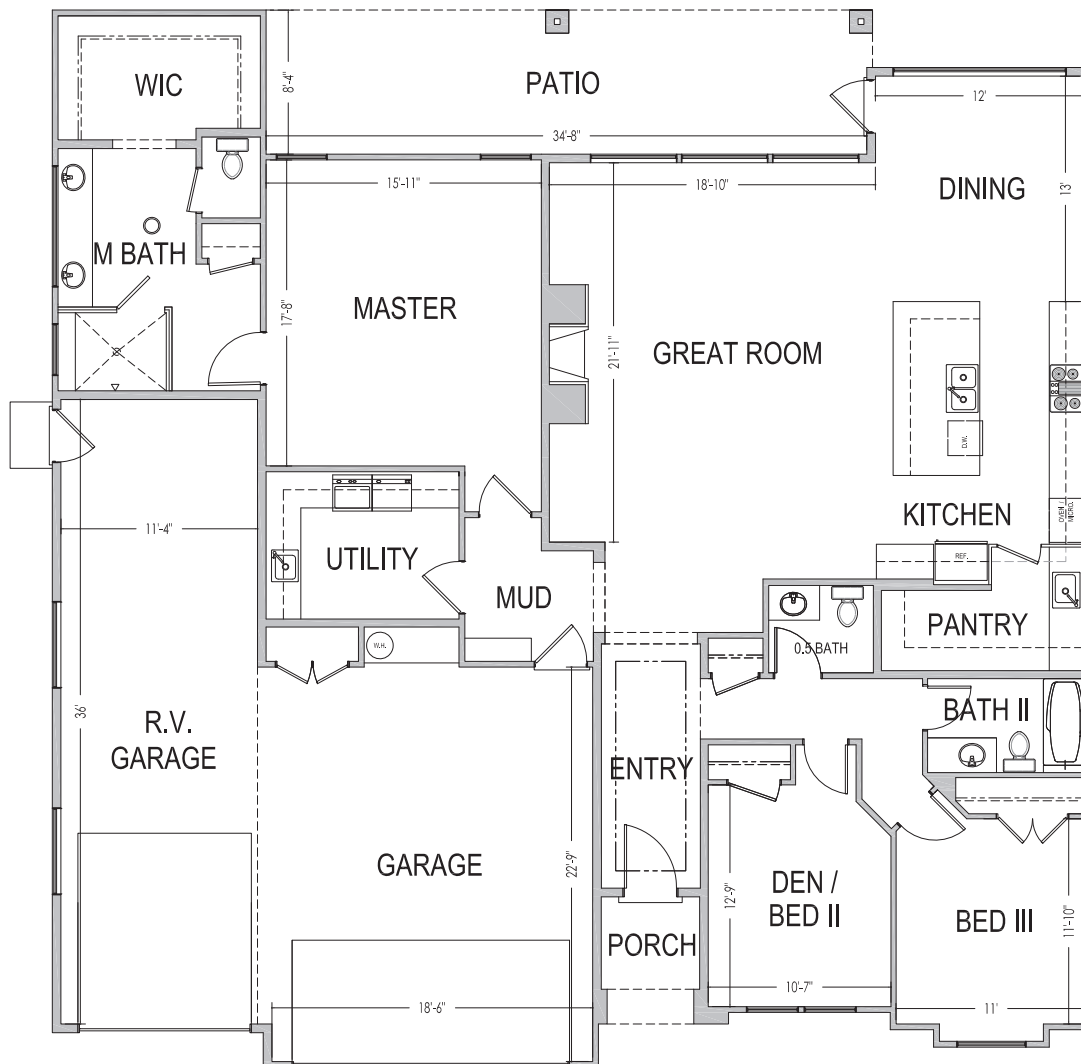
www.sshomes.info

2862 E. Smith Creek Dr.
Washington, UT 84780



60'x61'

2286 ft.²



*Prices and estimated completion dates are subject to change without notice or obligation. Finished homes may vary from the architectural rendering. Square footage is estimated. [Scan, Download & Register for free in the NoviHome App for more information on all our homes and neighborhoods.](#)



Agent: Lori Johansson
(435)669-8618 - lori@ssrealtysolutions.com



MLS



S&S Realty
SOLUTIONS