



#37 - FOR SALE*
 5 Bed | 4.5 Bath | 2 Gr. Rms. | 3 Car-RV Garage

S&S Homes

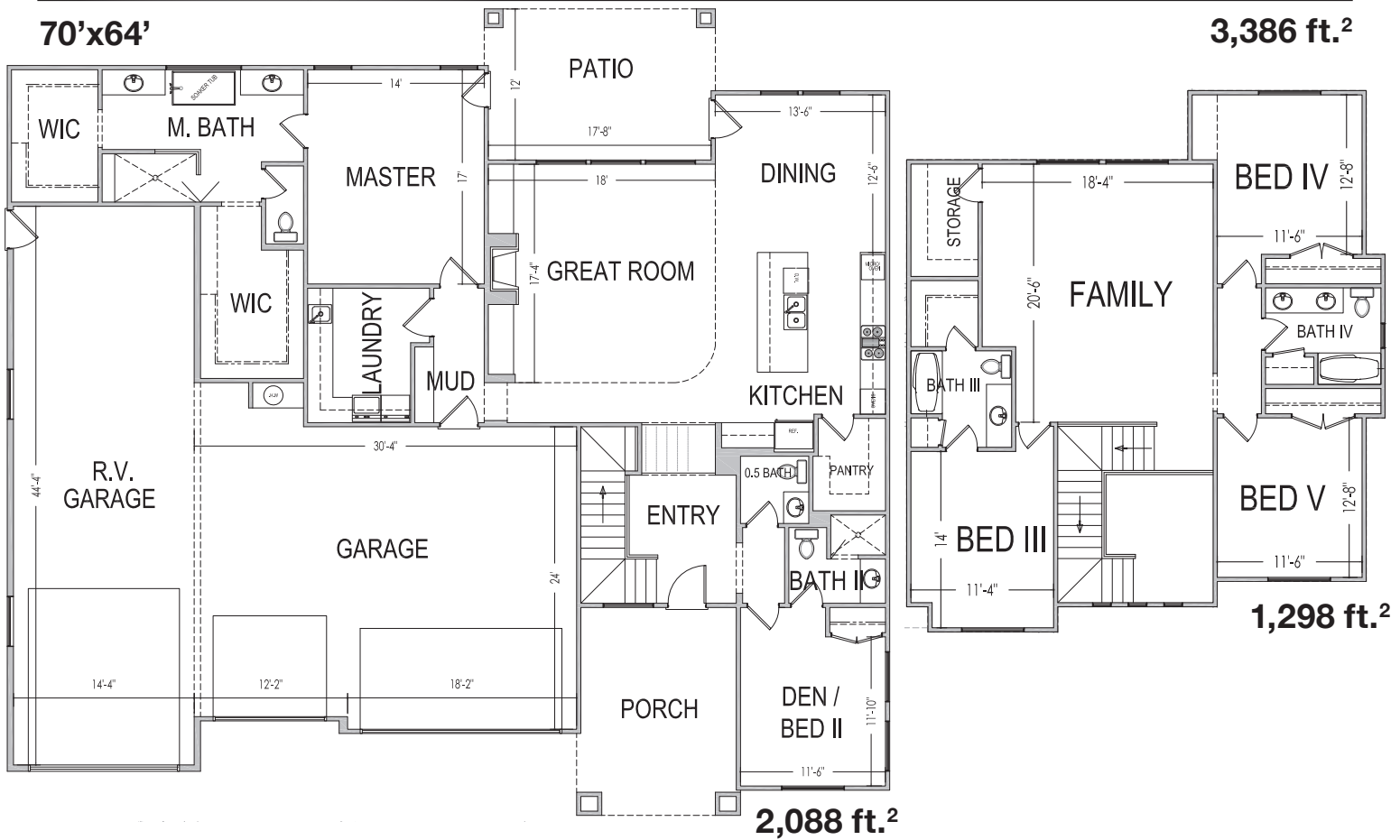
www.sshomes.info

2832 S. Woodrow Lane
 Washington, UT 84780



70'x64'

3,386 ft.²



*Prices, estimated completion dates, elevations, styles, colors, features, and finished homes may vary from the architectural rendering and are subject to change without notice or obligation. *Square footage is estimated. [Scan QR CODE for more information on available homes and neighborhoods.](#)



Agent: Shae Leonard
 (435)668-3096 - shae@ssrealtysolutions.com



MULTIPLE LISTING SERVICE
MLS



S&S Realty
 SOLUTIONS