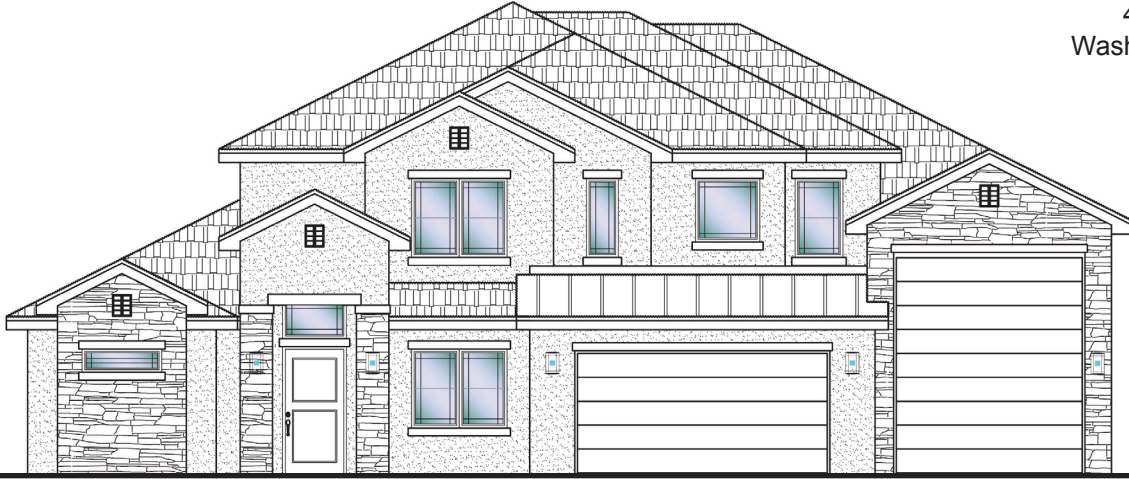




**#50 - FOR SALE\***  
5 Bed+Den | 5 Bath | 3 Car-RV Garage

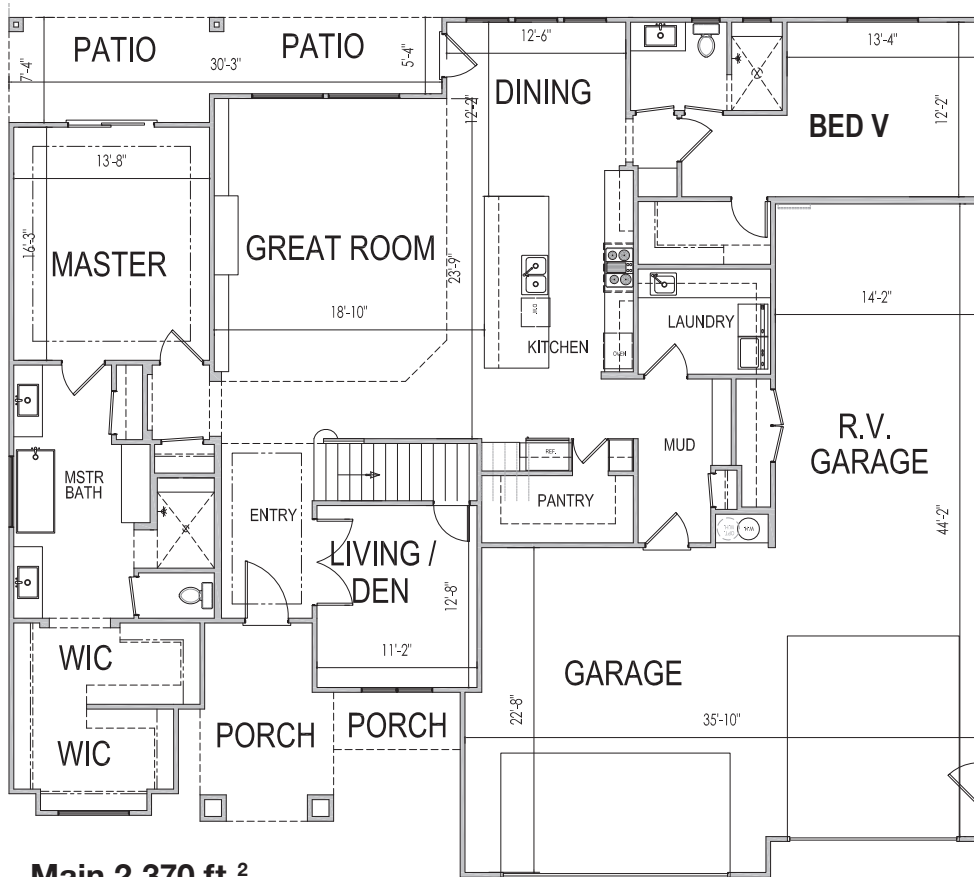
**S&S Homes**  
www.sshomes.info

444 W Lanz Circle  
Washington, UT 84780



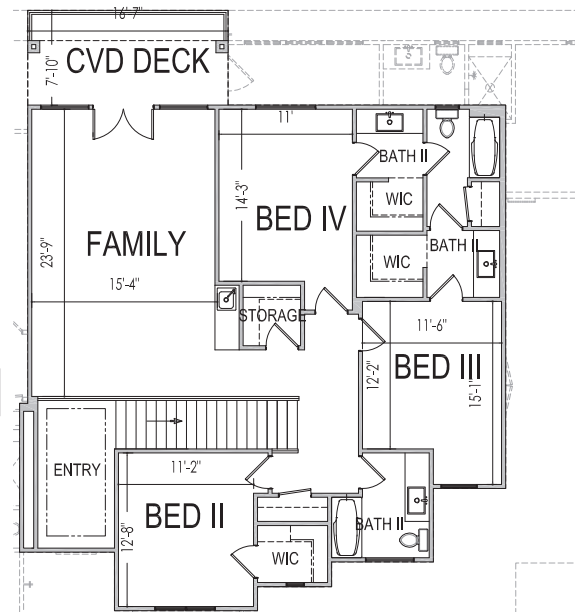
68'x63'

3,790 ft.<sup>2</sup>



Main 2,370 ft.<sup>2</sup>

Upper 1,420 ft.<sup>2</sup>



\*Prices, estimated completion dates, elevations, styles, colors, features, and finished homes may vary from the architectural rendering and are subject to change without notice or obligation. \*Square footage is estimated. [Scan QR CODE for more information on available homes and neighborhoods.](#)



**Agent: Shae Leonard**  
(435)668-3096 - shae@ssrealtysolutions.com



MULTIPLE LISTING SERVICE  
**MLS**



**S&S Realty**  
SOLUTIONS

