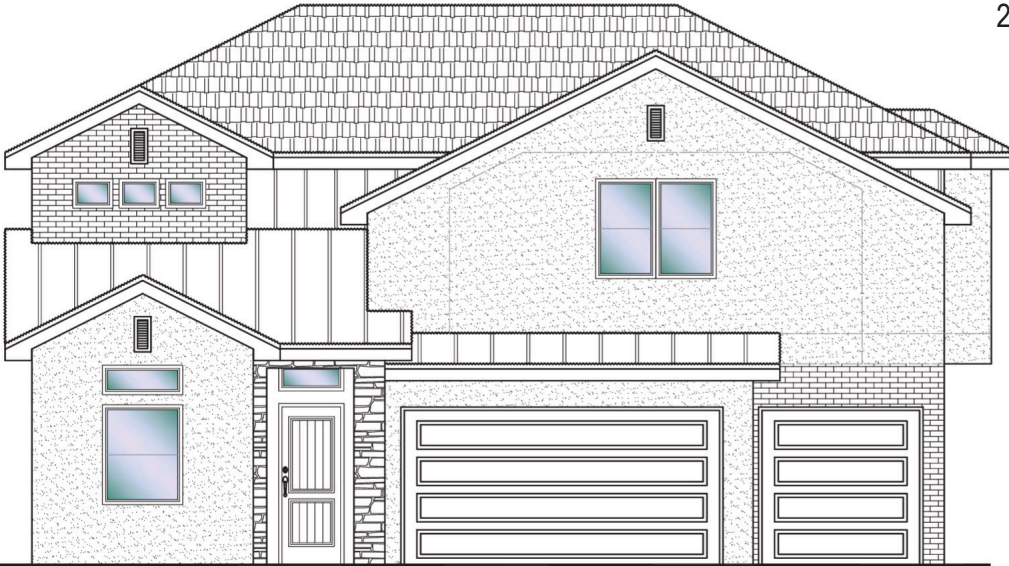




#22 - FOR SALE*
 4 Bdrm+Den | 2.5 Bath | 3 Car Garage

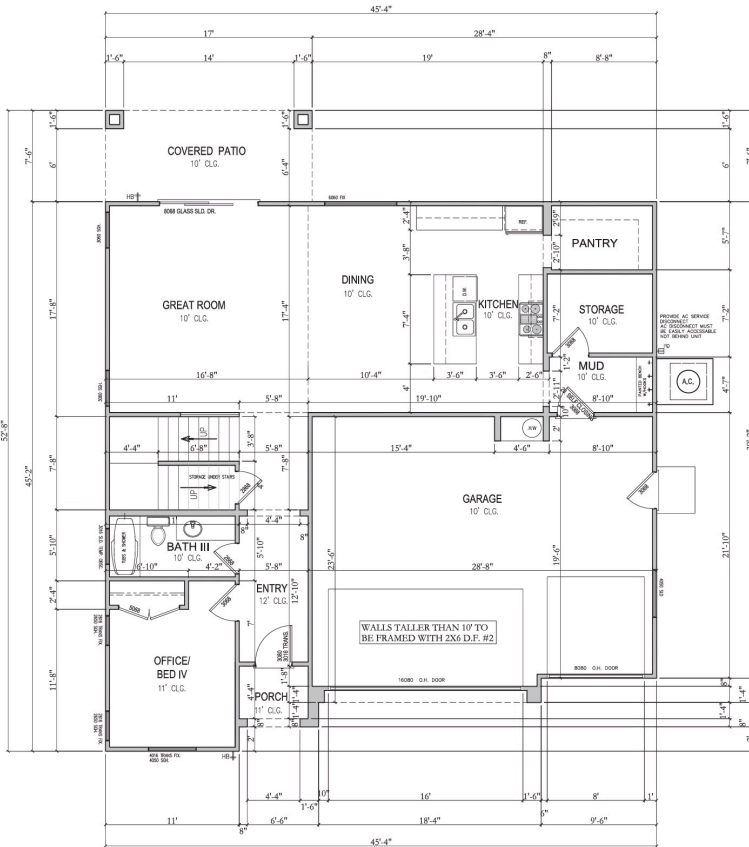
S&S Homes
 www.sshomes.info

2986 E. Smith Creek Dr.
 Washington, UT 84780

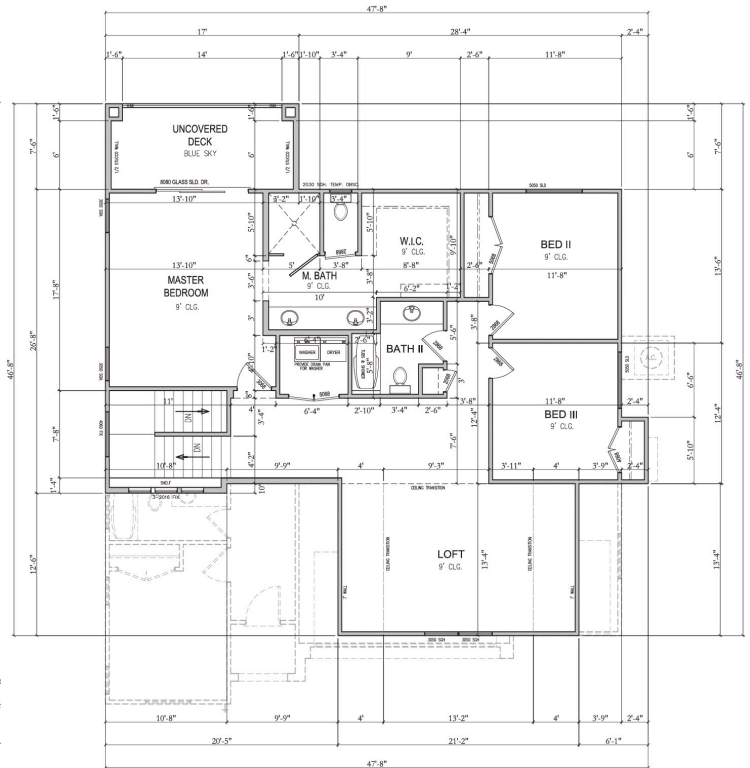


45'x52'

2702 ft.²



1,226 ft.²



1,476 ft.²

*Prices and estimated completion dates are subject to change without notice or obligation. Finished homes may vary from the architectural rendering. Square footage is estimated. Scan, Download & Register for free in the NoviHome App for more information on all our homes and neighborhoods.



Agent: Lori Johansson
 (435)669-8618 - lori@ssrealtysolutions.com

