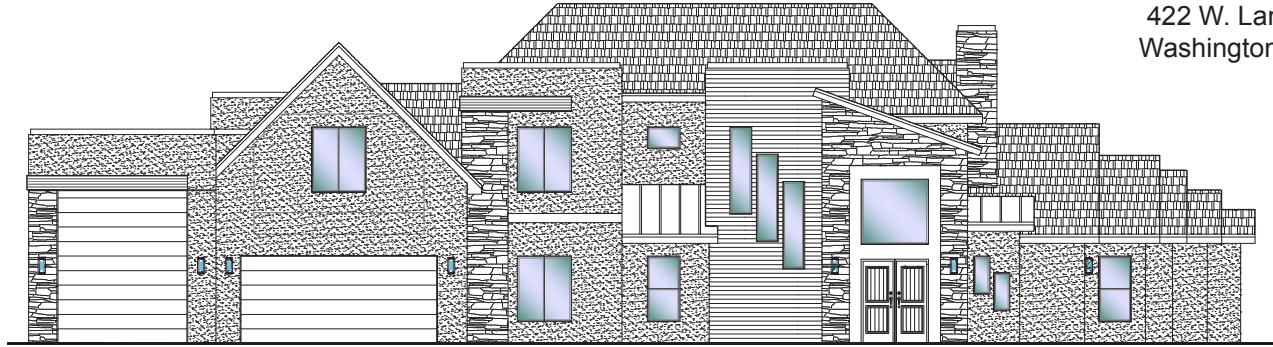




#21 - FOR SALE*
 5 Bed+Casita | 4.5 Bath | 3 Car-RV Garage

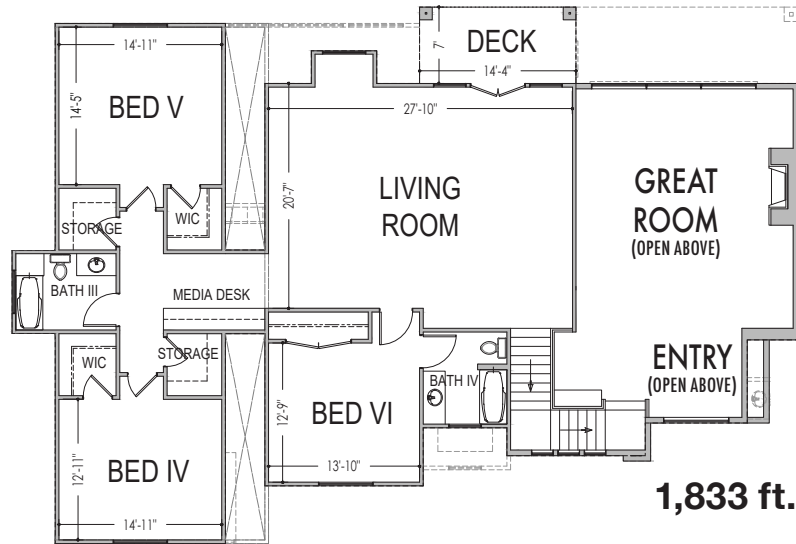
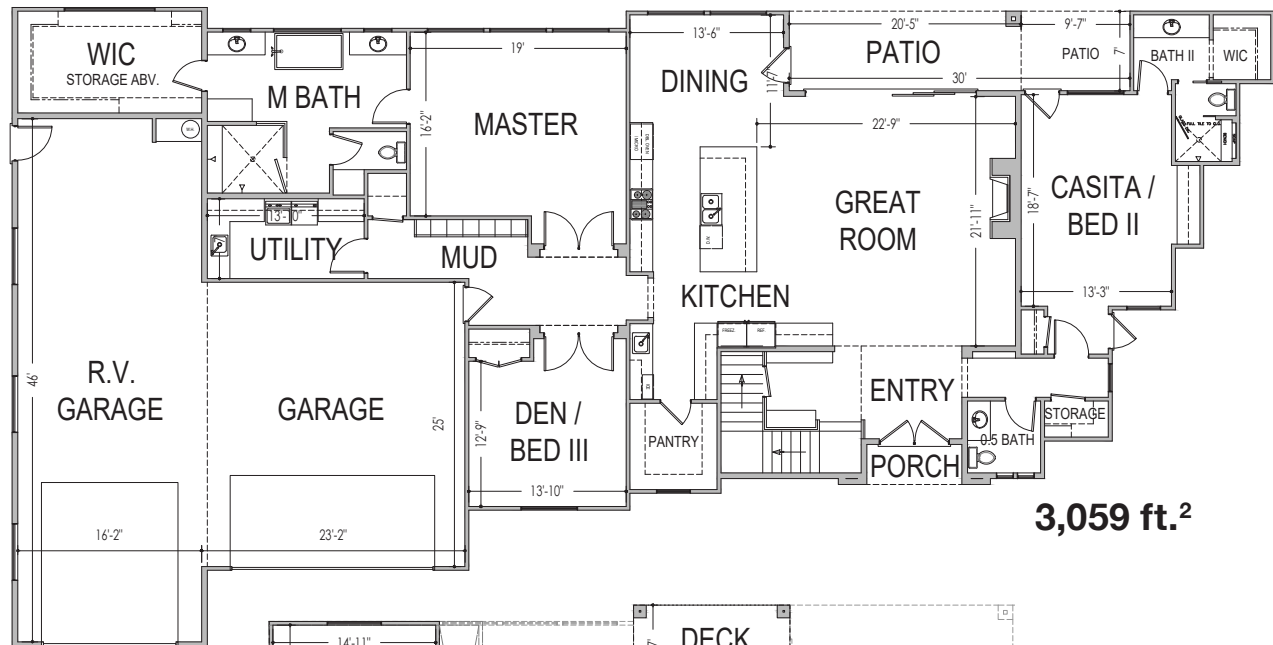
S&S Homes
 www.sshomes.info

422 W. Lamond Circle
 Washington, UT 84780



111'x56'

4,892 ft.²



*Prices and estimated completion dates are subject to change without notice or obligation. Finished homes may vary from the architectural rendering. Square footage is estimated. [Scan, Download & Register for free in the NoviHome App for more information on all our homes and neighborhoods.](#)



Agent: Shae Leonard
 (435)668-3096 - shae@ssrealtysolutions.com

