



**DESERT  
CLIFFS**

**#309 - FOR SALE\***

4 Bed | 3.5 Bath | 3 Car-Boat Garage

**S&S Homes**

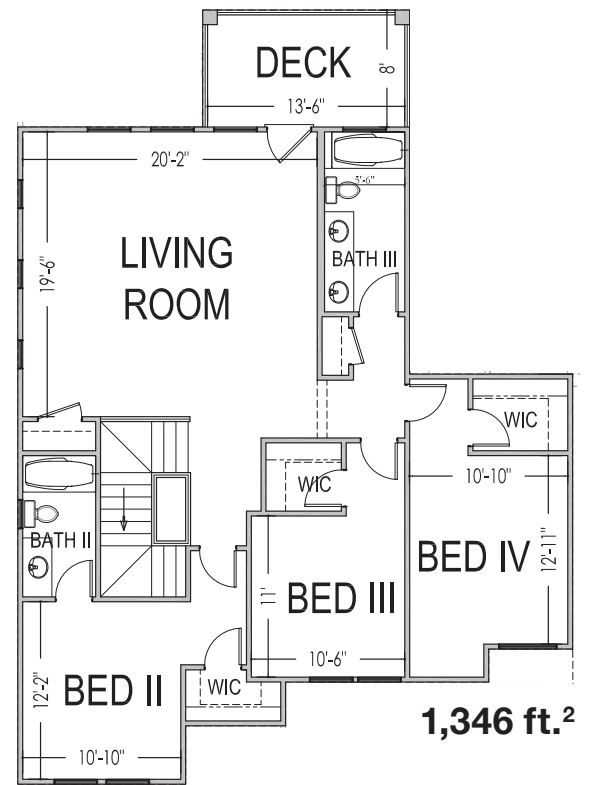
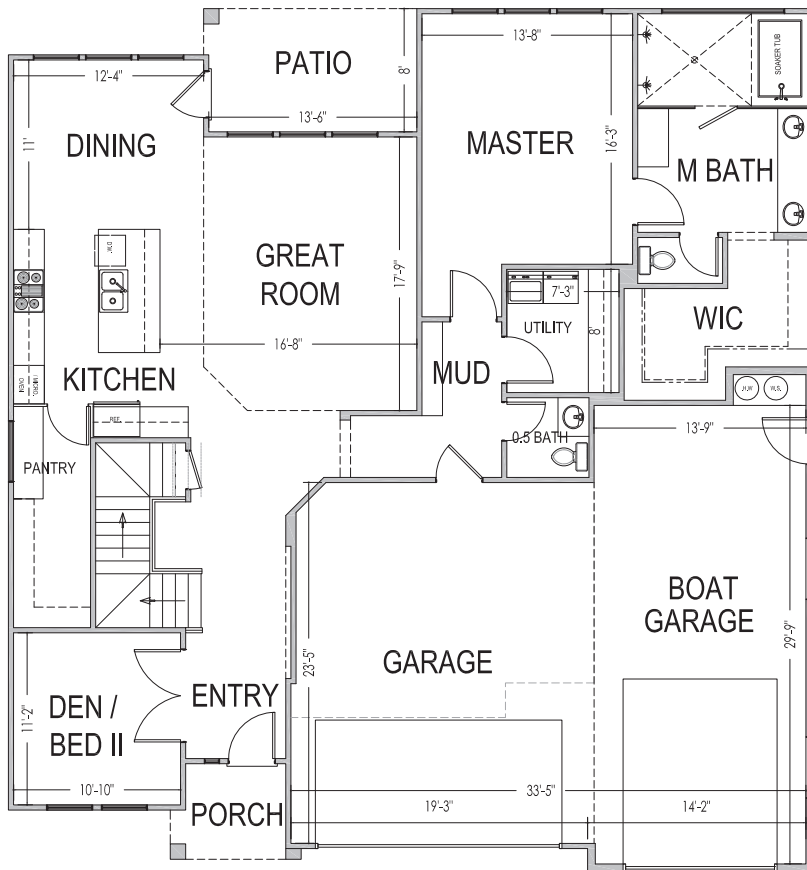
www.sshomes.info

6165 S. Half Dome Circle  
St George, UT 84790



**52'x56'**

**3,100 ft.<sup>2</sup>**



\*Prices and estimated completion dates are subject to change without notice or obligation. Finished homes may vary from the architectural rendering. Square footage is estimated. Scan, Download & Register for free in the NoviHome App for more information on all our homes and neighborhoods.



**Agent: Shae Leonard**  
(435)668-3096 - shae@ssrealtysolutions.com



MULTIPLE LISTING SERVICE  
**MLS**



**S&S Realty**  
SOLUTIONS