



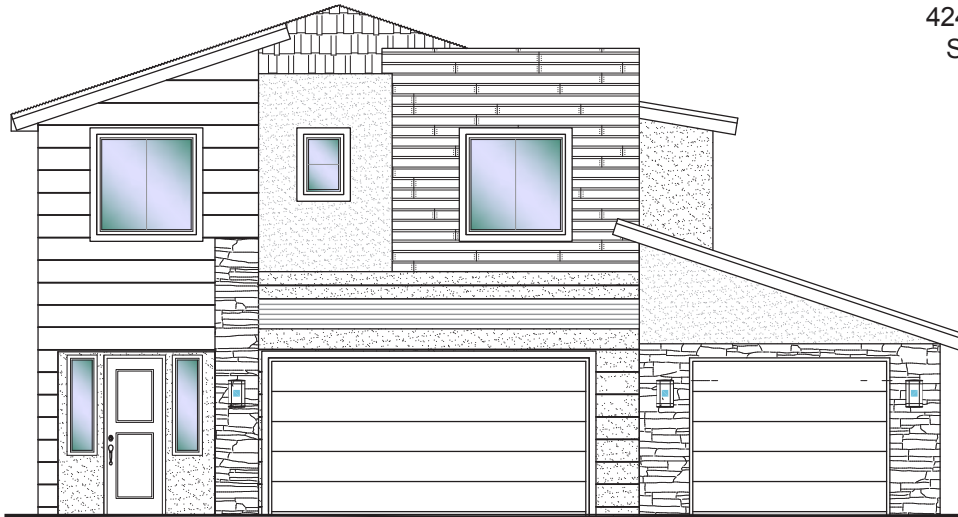
Desert Reserve

#314 - FOR SALE*
4 Bed | 2.5 Bath | 3 Car Garage

S&S Homes

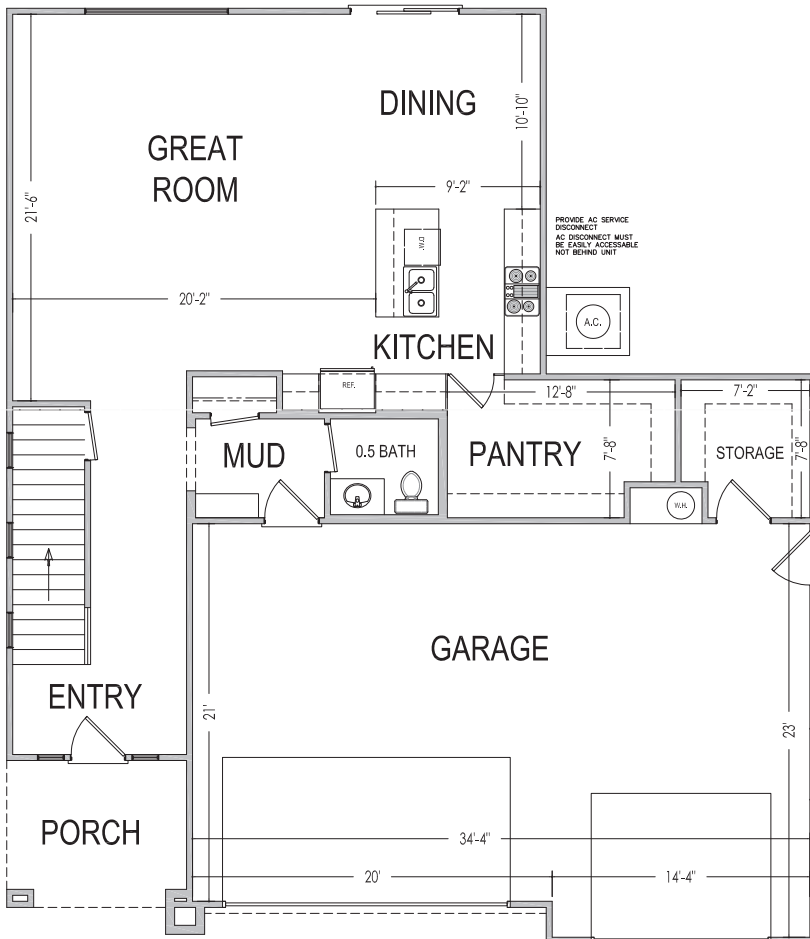
www.sshomes.info

4245 E. El Capitan Way
St. George, UT 84790

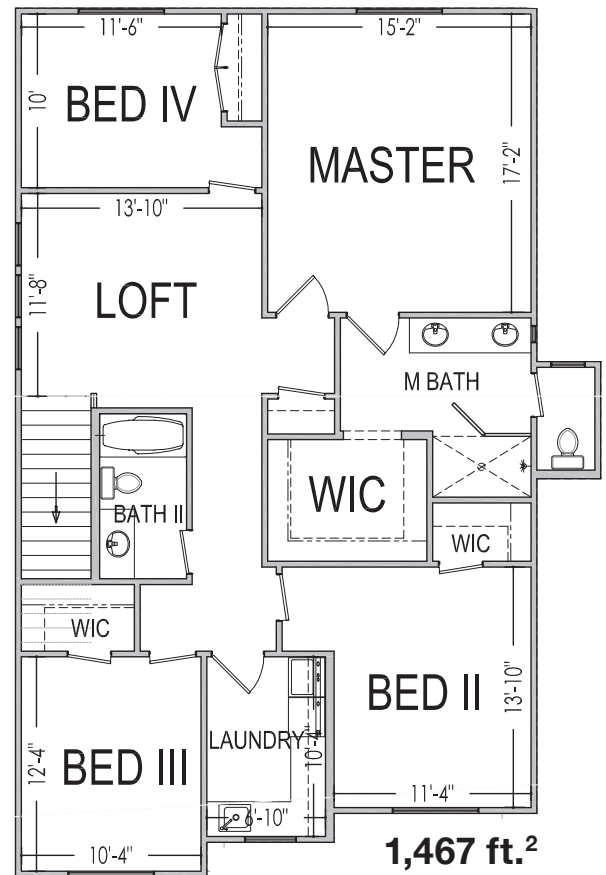


45'x52'

2,520 ft.²



1,053 ft.²



1,467 ft.²

*Prices, estimated completion dates, elevations, styles, colors, features, and finished homes may vary from the architectural rendering and are subject to change without notice or obligation. Square footage is estimated. Scan, Download & Register for free in the NoviHome App for more information on all our homes and neighborhoods.



Agent: Shae Leonard
(435)668-3096 - shae@ssrealtysolutions.com



MULTIPLE LISTING SERVICE
MLS



S&S Realty
SOLUTIONS