



**DESERT
CLIFFS**

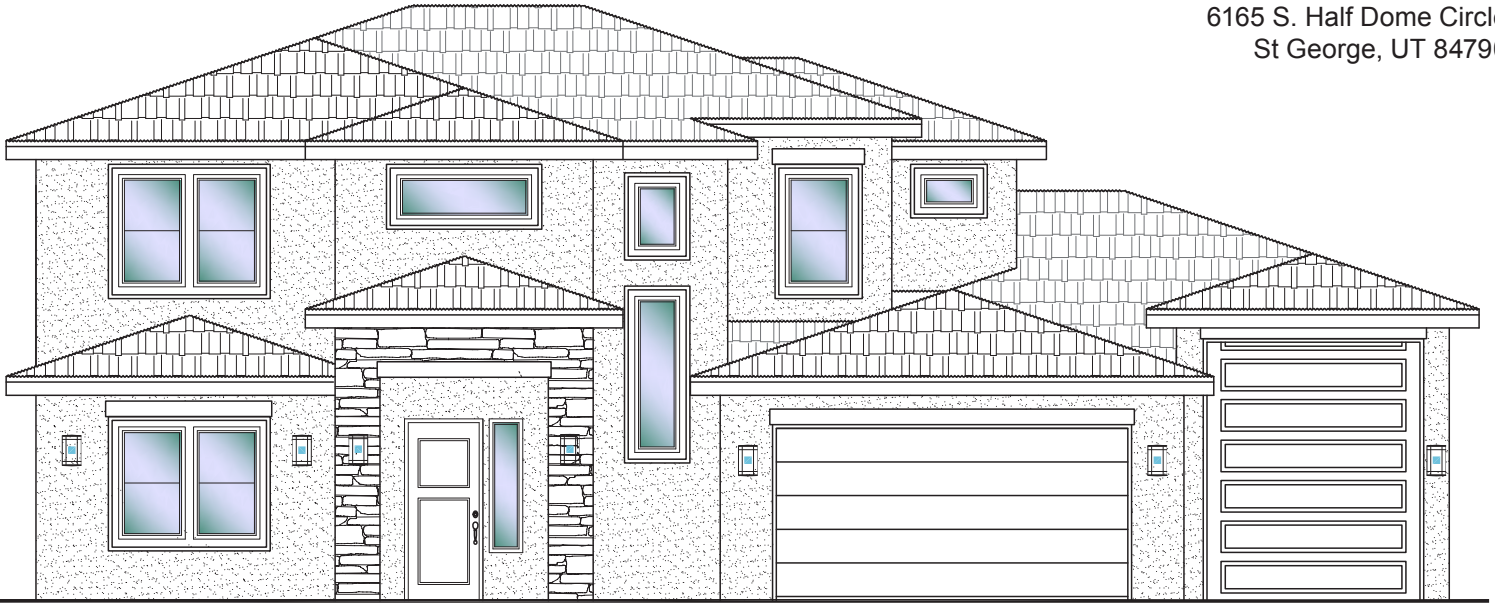
#310 - FOR SALE*

4 Bed+Den | 4 Bath | 3 Car-Boat Garage

S&S Homes

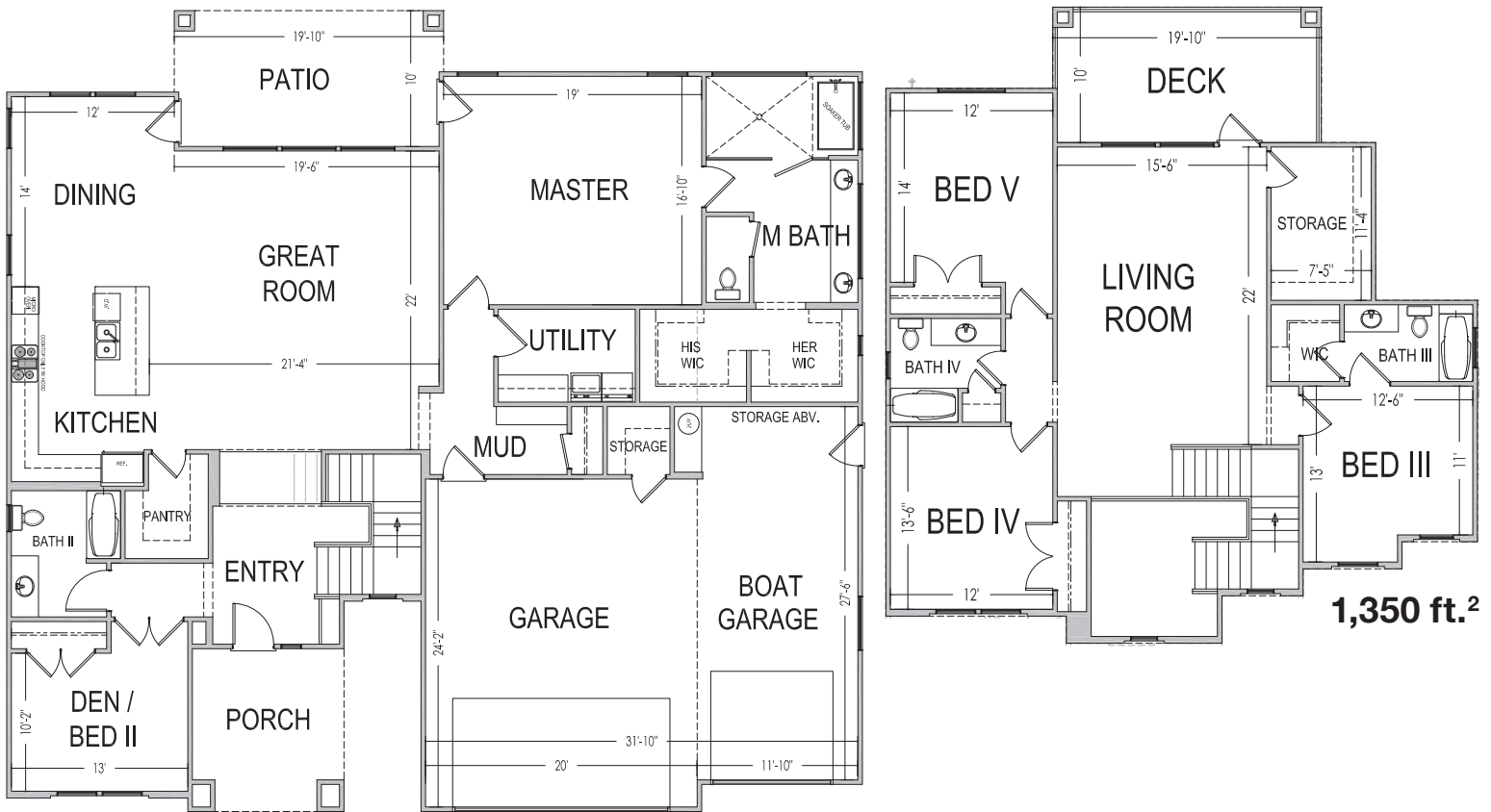
www.sshomes.info

6165 S. Half Dome Circle
St George, UT 84790



63'x59'

3,530 ft.²



*Prices and estimated completion dates are subject to change without notice or obligation. Finished homes may vary from the architectural rendering. Square footage is estimated. [Scan, Download & Register for free in the NoviHome App for more information on all our homes and neighborhoods.](#)



Agent: Shae Leonard
(435)668-3096 - shae@ssrealtysolutions.com



MLS
MULTIPLE LISTING SERVICE



S&S Realty
SOLUTIONS