



Desert Reserve

#316 - FOR SALE*
4 Bed | 2.5 Bath | 3 Car Garage

S&S Homes

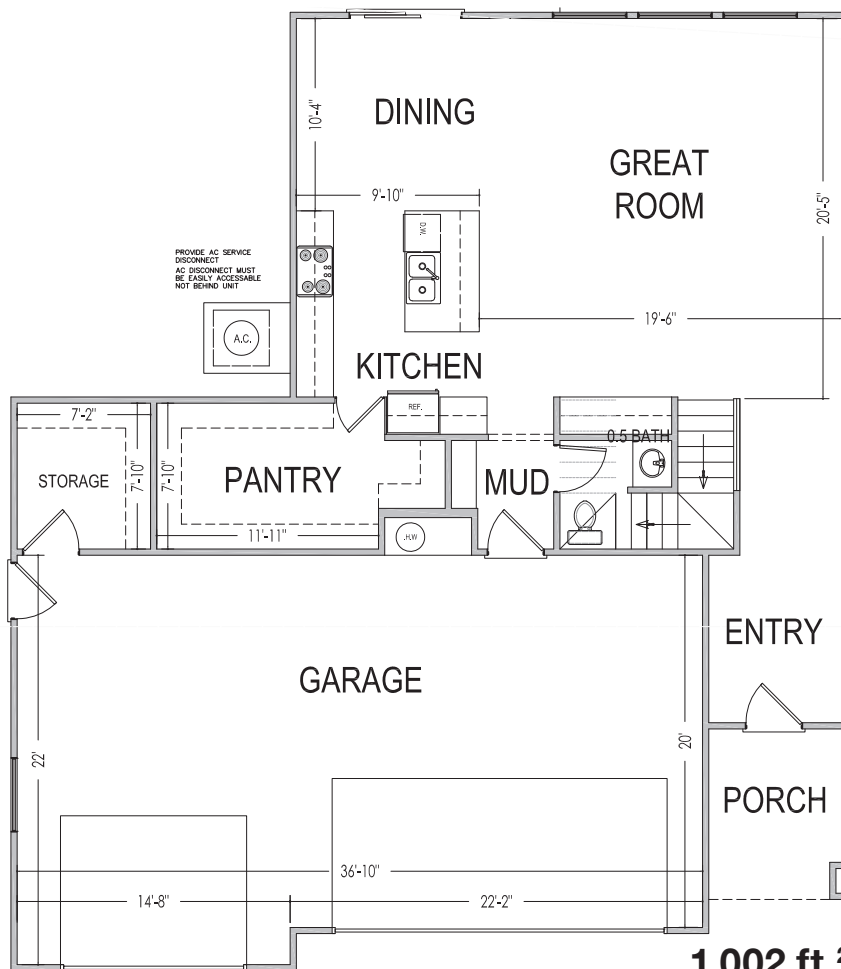
www.sshomes.info

4238 E. El Capitan Way
St. George, UT 84790

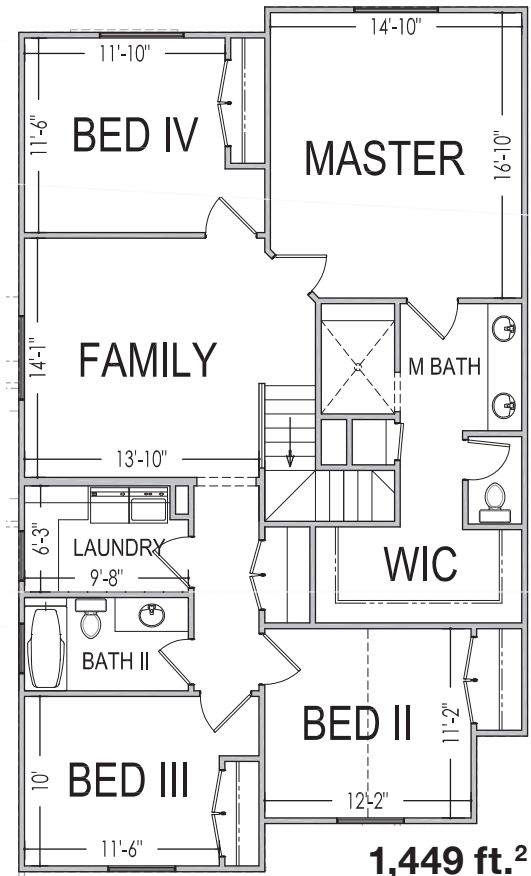


45'x53'

2,451 ft.²



1,002 ft.²



1,449 ft.²

*Prices, estimated completion dates, elevations, styles, colors, features, and finished homes may vary from the architectural rendering and are subject to change without notice or obligation. Square footage is estimated. [Scan, Download & Register for free in the NoviHome App for more information on all our homes and neighborhoods.](#)



Agent: Shae Leonard
(435)668-3096 - shae@ssrealtysolutions.com



MULTIPLE LISTING SERVICE
MLS



S&S Realty
SOLUTIONS