



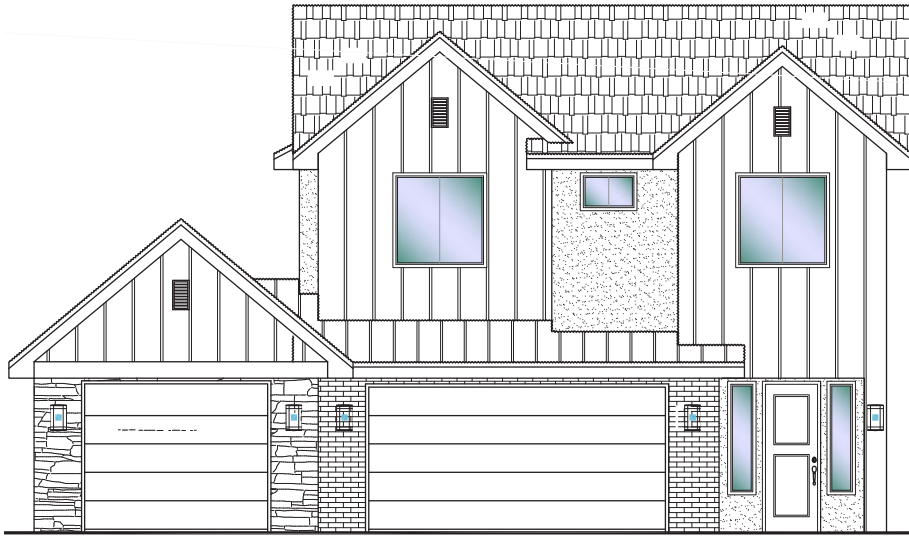
**Desert Reserve**

**#315 - FOR SALE\***  
3 Bed | 2.5 Bath | 3 Car Garage

**S&S Homes**

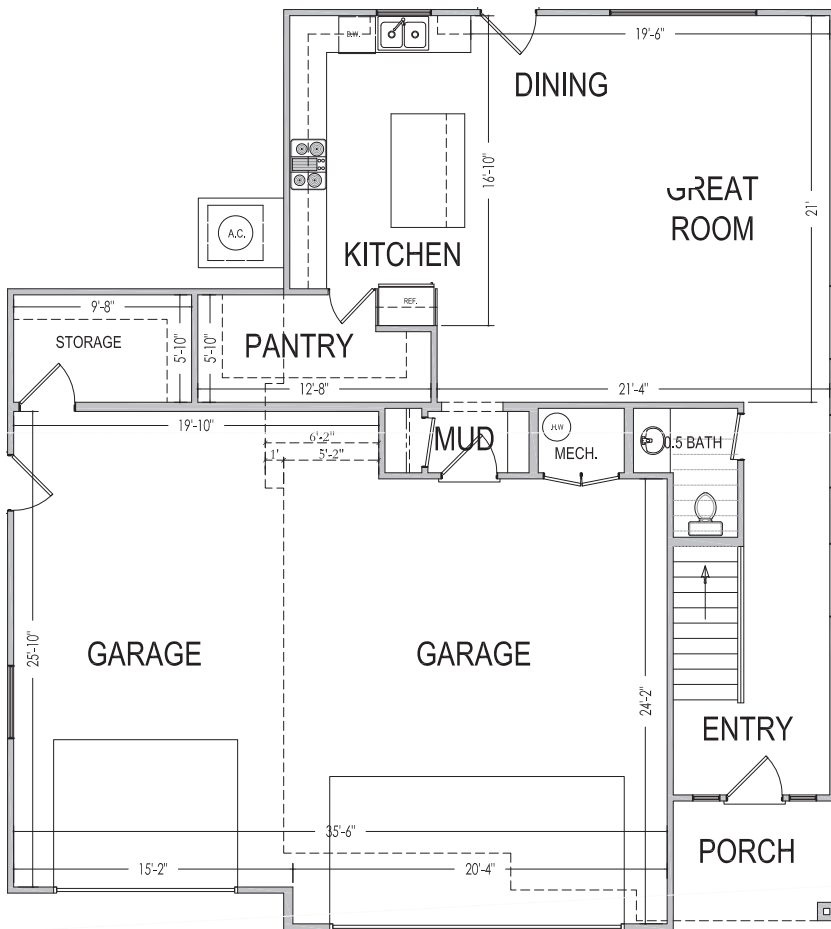
www.sshomes.info

4244 E. El Capitan Way  
St. George, UT 84790

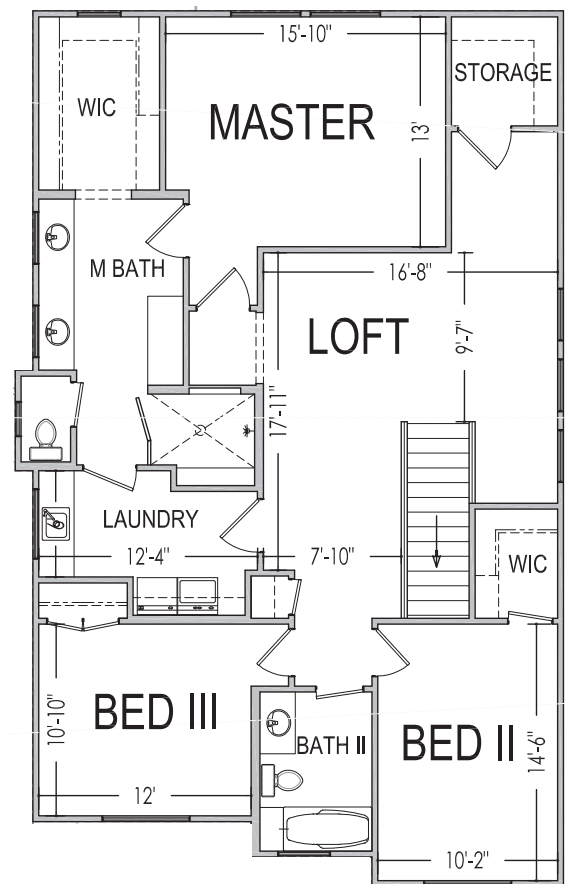


45'x50'

2,372 ft.<sup>2</sup>



938 ft.<sup>2</sup>



1,434 ft.<sup>2</sup>

\*Prices, estimated completion dates, elevations, styles, colors, features, and finished homes may vary from the architectural rendering and are subject to change without notice or obligation. Square footage is estimated. Scan, Download & Register for free in the NoviHome App for more information on all our homes and neighborhoods.



**Agent: Shae Leonard**  
(435)668-3096 - shae@ssrealtysolutions.com



MULTIPLE LISTING SERVICE  
**MLS**



**S&S Realty**  
SOLUTIONS