



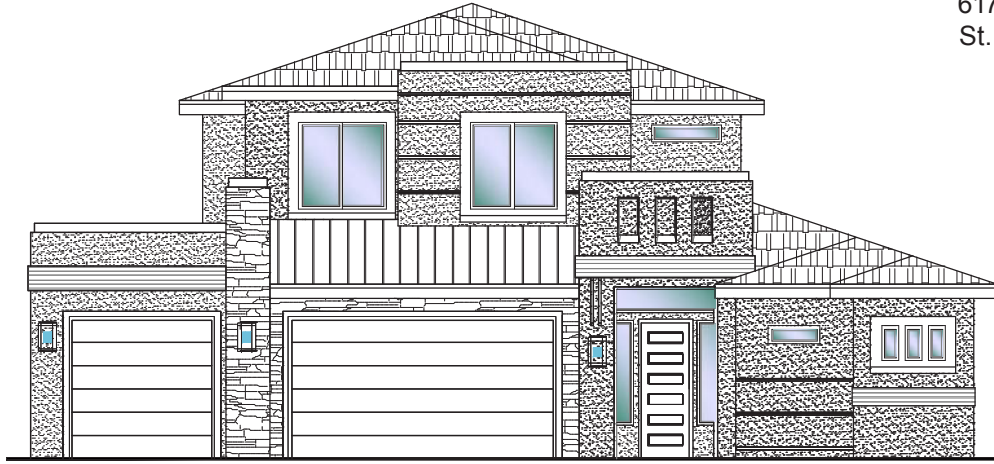
**DESERT  
CLIFFS**

**#306 - FOR SALE\***  
5 Bed | 4 Bath | 3 Car Garage

**S&S Homes**

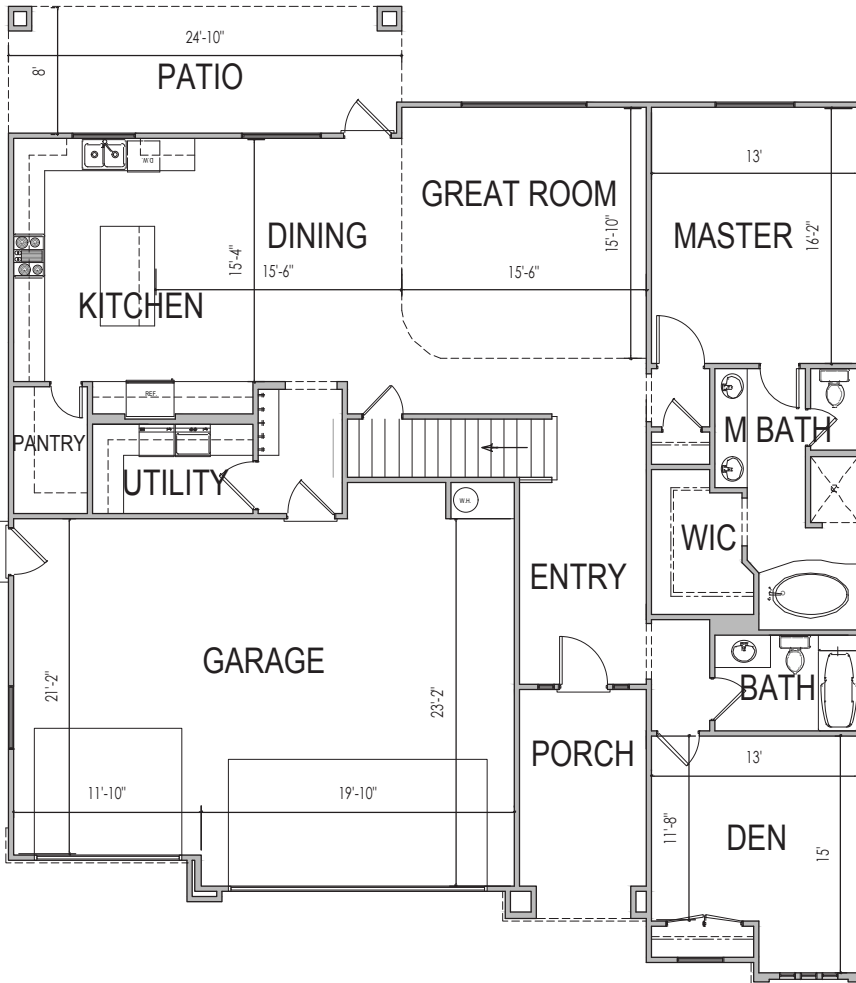
www.sshomes.info

6170 S Half Dome Cir.  
St. George, UT 84790

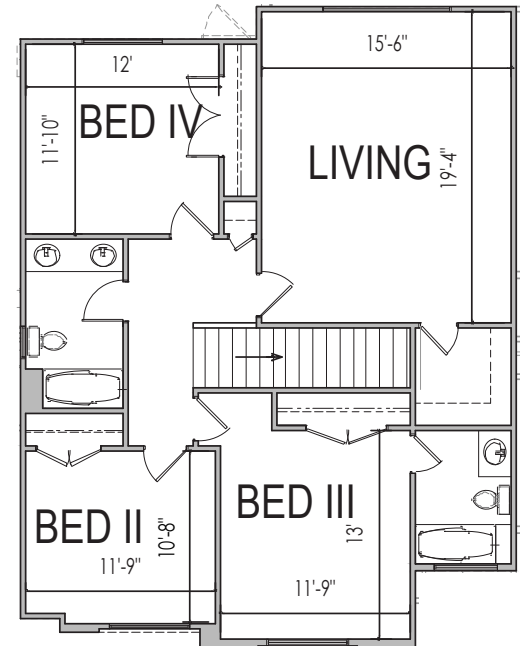


**54'x62'**

**2,983 ft.<sup>2</sup>**



**1,828 ft.<sup>2</sup>**



**1,155 ft.<sup>2</sup>**

\*Prices, estimated completion dates, elevations, styles, colors, features, and finished homes may vary from the architectural rendering and are subject to change without notice or obligation. Square footage is estimated. Scan, Download & Register for free in the NoviHome App for more information on all our homes and neighborhoods.



**Agent: Shae Leonard**  
(435)668-3096 - shae@ssrealtysolutions.com



MULTIPLE LISTING SERVICE  
**MLS**



**S&S Realty**  
SOLUTIONS