

**Desert Reserve****NEW HOMES FOR SALE**

With Estimated Pricing and Completion Dates*

S&S Homes

www.sshomes.info

LOT#	SQ. FT.	LEVELS	BEDS	BATHS	GARAGE	EST. DATE*	FOR SALE
301	2520	2	4	2.5	3 Car	Nov.'24*	\$579,900*
302	2451	2	4	2.5	3 Car	Nov.'24*	\$578,900*
303	2372	2	3	2.5	3 Car	Nov.'24*	\$591,900*
304	2520	2	4	2.5	3 Car	Nov.'24*	\$582,900*
305	2372	2	3	2.5	3 Car	Dec.'24*	\$591,900*
306	2451	2	4	2.5	3 Car	Feb.'25*	\$583,900*
307	2520	2	4	2.5	3 Car	Feb.'25*	CALL FOR PRICE*
308	2372	2	3	2.5	3 Car	Dec.'24*	CALL FOR PRICE*
309	2451	2	4	2.5	3 Car	Mar.'25*	CALL FOR PRICE*
310	2520	2	4	2.5	3 Car	Feb.'25*	CALL FOR PRICE*
311	2372	2	3	2.5	3 Car	Mar.'25*	CALL FOR PRICE*
312	2520	2	4	2.5	3 Car	Feb.'25*	CALL FOR PRICE*
313	2451	2	4	2.5	3 Car	Mar.'25*	CALL FOR PRICE*
314	2520	2	4	2.5	3 Car	Feb.'25*	CALL FOR PRICE*
315	2372	2	3	2.5	3 Car	Jan.'25*	\$589,900*
316	2451	2	4	2.5	3 Car	Jan.'25*	\$578,900*
318	2372	2	3	2.5	3 Car	Dec.'24*	\$605,900*
319	2425	2	3	2.5	3 Car	Mar.'25*	CALL FOR PRICE*

STANDARD FEATURES**INTERIOR**

- **GE Stainless Steel Appliances:** Dishwasher, Microwave, Free Standing Range
- Energy Saving LED Light Bulbs
- Designer Selected Quartz Counter Tops (2 cm Thick)
- Painted HDF Cabinets
- 36" Tall Base Cabinets
- Soft Close Cabinet Doors and Drawer Guides
- Under-Mount Stainless Steel Kitchen Sink with Garbage Disposal
- Tile Kitchen Back Splash
- Pull Down Delta Essa® Kitchen Faucet
- Delta® Black Faucets Throughout
- Tile Shower & Tub Surrounds
- Toilet Paper Holders & Towel Bars
- Elongated Toilets in All Baths
- Full Width Mirrors Above Vanity
- Luxury Vinyl Plank Flooring
- Decora Light Switches
- Ceiling Fan Pre-wire in all Bedrooms and Living Rooms
- Trim - 5" Base, 3" Case
- Two-Tone Paint Throughout Home (Garage One-Tone Only)
- Elevated 9' Ceilings Throughout

EXTERIOR

- 95% Gas Furnace and 17 SEER A/C Dual Fuel: Above Industry Standard of 80% Furnace
- 50 Gallon Water Heater

- Insulation: R-15 Walls & R-38 Ceiling
- 1" Foam Insulation Thermal/Moisture Barrier on Exterior Walls
Adding R-4 to Insulation increasing up to R-19
- Radiant Sheeting in the Attic
- **Front & Rear Yard Professional Landscaping**
- **Partial Rear Yard Cinder Block Walls**
- Dead Bolt Locks on All Exterior Doors
- Synthetic Stucco Finish Coat
- Cultured Stone Accents (As per Plan Elevation)
- Rain Gutters
- Fire Rated Garage Entry Door
- Low Energy Dual Pane Exterior Vinyl Windows
- Fire Resistant Flat Cement Roof Tiles (per Elevation)
- Pre-Plumbed Soft Water Loop
- 8' Designer Selected Insulated Garage Doors With Openers

CONNECTIVITY

- Video Doorbell with iOS/Android Support
- Smart Door Lock with Keypad
- Smart Garage Door Opener
- Smart Programmable Thermostat
- Fiber Optic Cable Run into Oversized Interior Low Voltage Panel
- Prewire or Sleeved for Cable, Phone Service and Satellite
- Ethernet and TV Drops run to Great Room(s) and Bedrooms
- Fiber Optic Internet Community

*Prices, estimated completion dates, elevations, styles, colors, features, and finished homes may vary from the architectural rendering and are subject to change without notice or obligation. Square footage is estimated. [Scan, Download & Register for free in the NoviHome App for more information on all our homes and neighborhoods.](#)



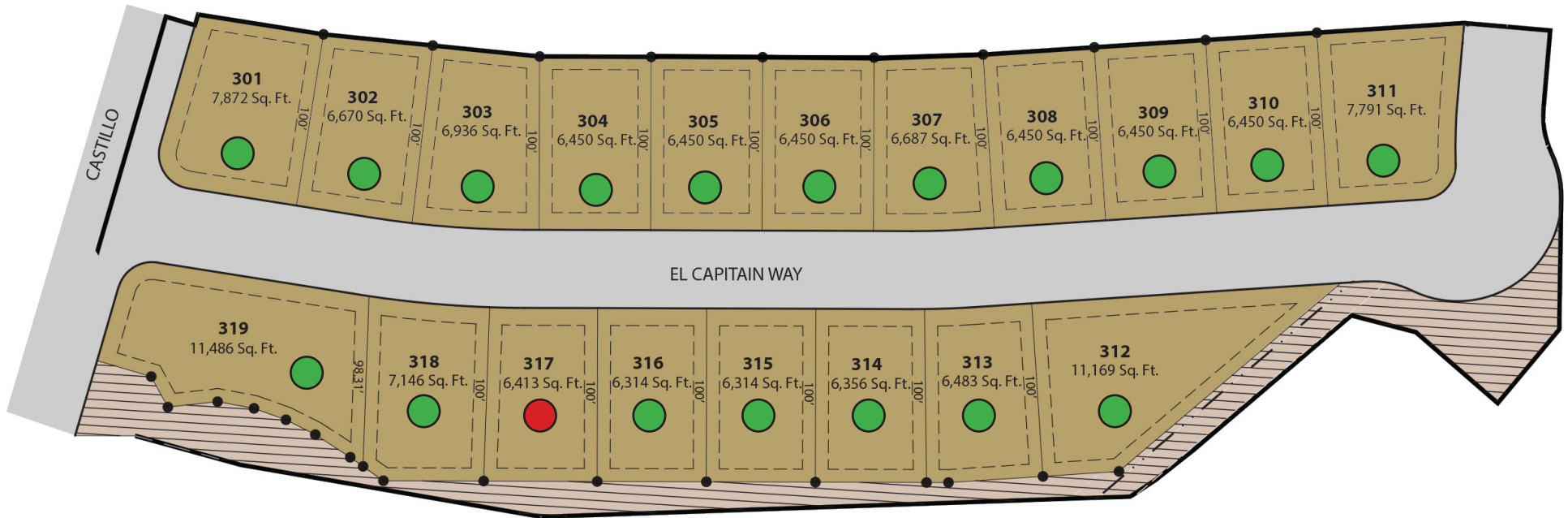
Agent: Shae Leonard
(435)668-3096 - shae@ssrealtysolutions.com



MULTIPLE LISTING SERVICE
MLS



S&S Realty
SOLUTIONS



● FOR SALE ● DECORATED ● FUTURE HOME ● SOLD

*Prices, estimated completion dates, elevations, styles, colors, features, and finished homes may vary from the architectural rendering and are subject to change without notice or obligation. Square footage is estimated. Scan, Download & Register for free in the NoviHome App for more information on all our homes and neighborhoods.





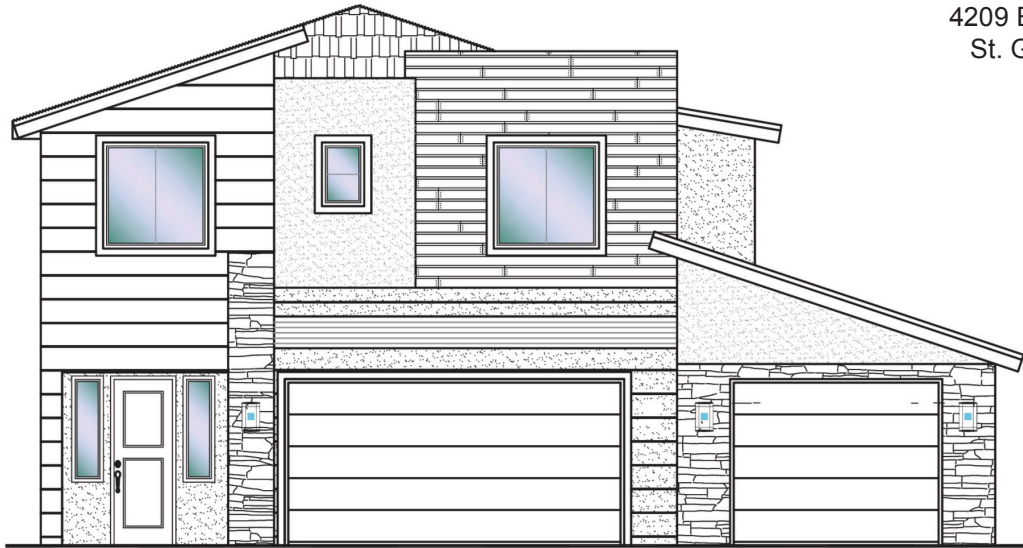
Desert Reserve

#301 - FOR SALE*
4 Bed | 2.5 Bath | 3 Car Garage

S&S Homes

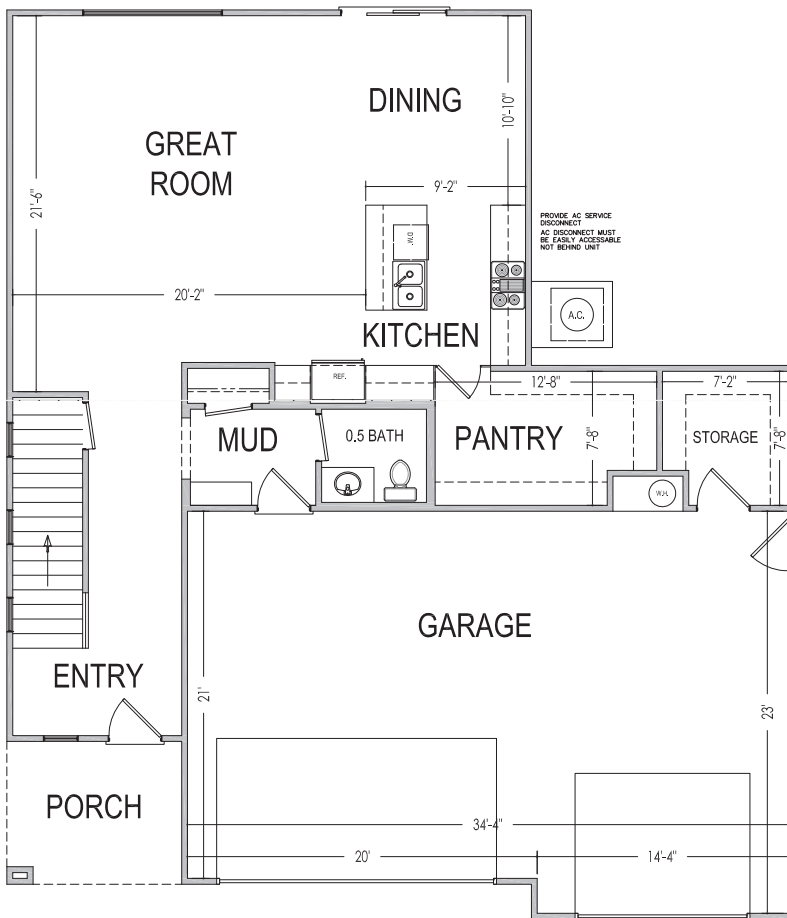
www.sshomes.info

4209 E. El Capitan Way
St. George, UT 84790

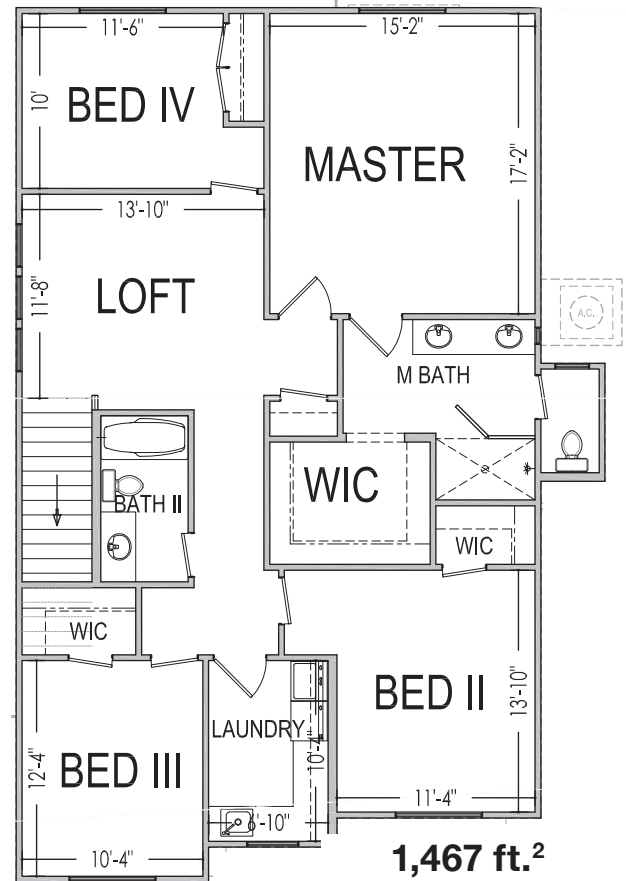


45'x52'

2,520 ft.²



1,053 ft.²



1,467 ft.²

*Prices, estimated completion dates, elevations, styles, colors, features, and finished homes may vary from the architectural rendering and are subject to change without notice or obligation. Square footage is estimated. Scan, Download & Register for free in the NoviHome App for more information on all our homes and neighborhoods.



Agent: Shae Leonard
(435)668-3096 - shae@ssrealtysolutions.com



MULTIPLE LISTING SERVICE
MLS



S&S Realty
SOLUTIONS

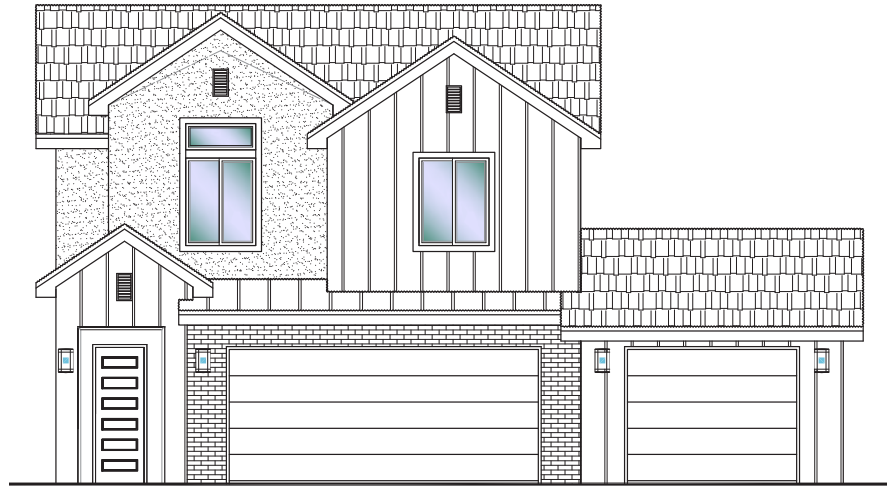


Desert Reserve #302 - FOR SALE*
4 Bed | 2.5 Bath | 3 Car Garage

S&S Homes

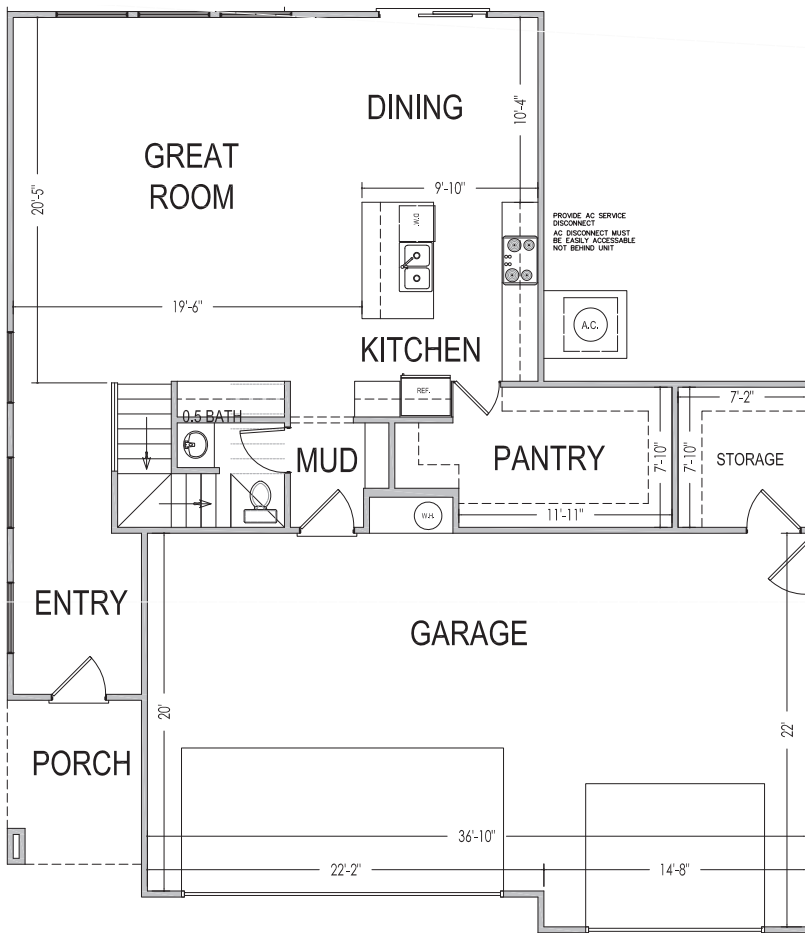
www.sshomes.info

4217 E. El Capitan Way
St. George, UT 84790

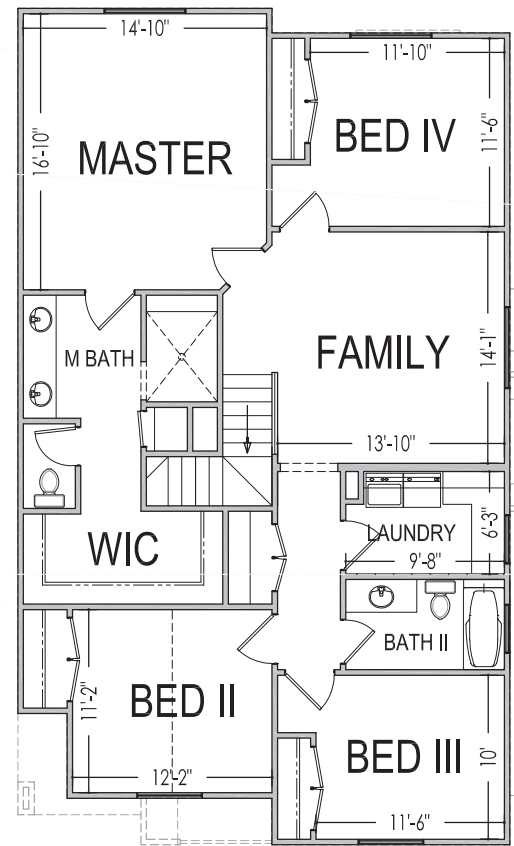


45'x53'

2,451 ft.²



1,002 ft.²



1,449 ft.²

*Prices, estimated completion dates, elevations, styles, colors, features, and finished homes may vary from the architectural rendering and are subject to change without notice or obligation. Square footage is estimated. Scan, Download & Register for free in the NoviHome App for more information on all our homes and neighborhoods.



Agent: Shae Leonard
(435)668-3096 - shae@ssrealtysolutions.com



MULTIPLE LISTING SERVICE
MLS



S&S Realty
SOLUTIONS

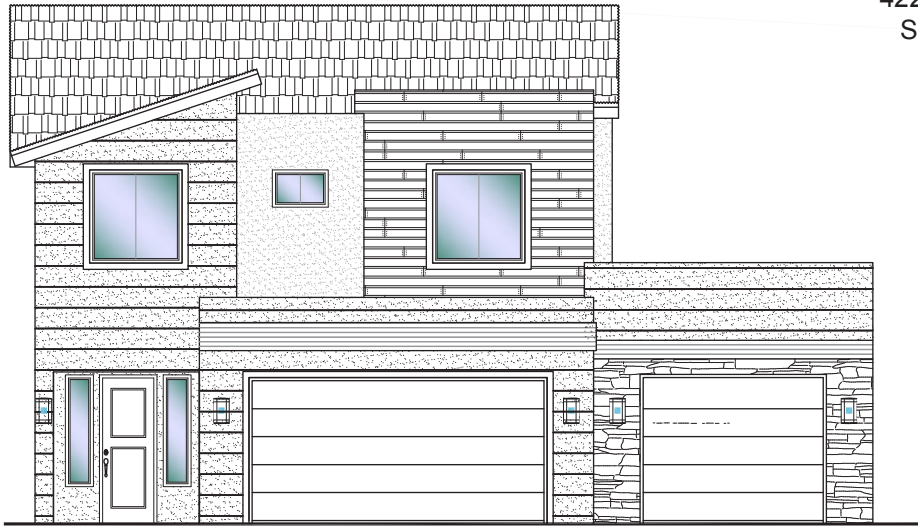


Desert Reserve #303 - FOR SALE*
3 Bed | 2.5 Bath | 3 Car Garage



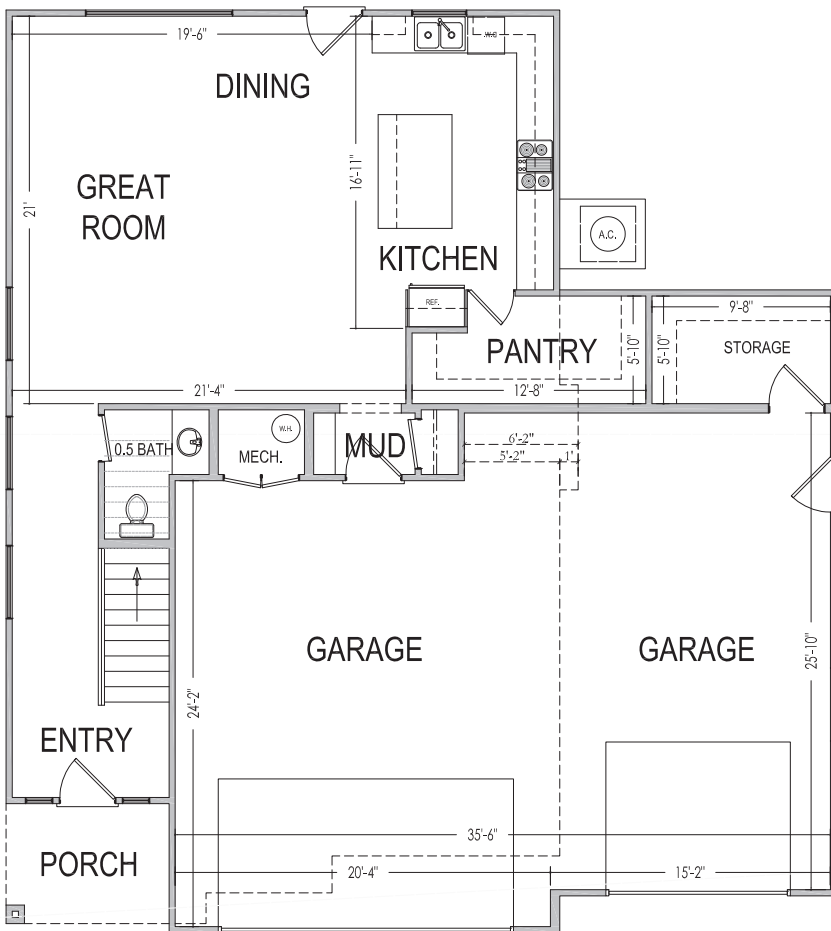
www.sshomes.info

4225 E. El Capitan Way
St. George, UT 84790

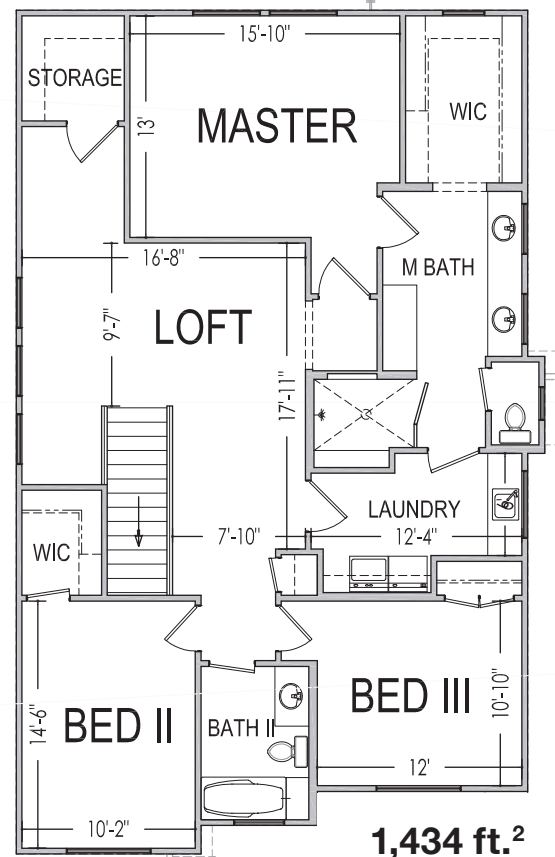


45'x50'

2,372 ft.²



938 ft.²



1,434 ft.²

*Prices, estimated completion dates, elevations, styles, colors, features, and finished homes may vary from the architectural rendering and are subject to change without notice or obligation. Square footage is estimated. Scan, Download & Register for free in the NoviHome App for more information on all our homes and neighborhoods.



Agent: Shae Leonard
(435)668-3096 - shae@ssrealtysolutions.com



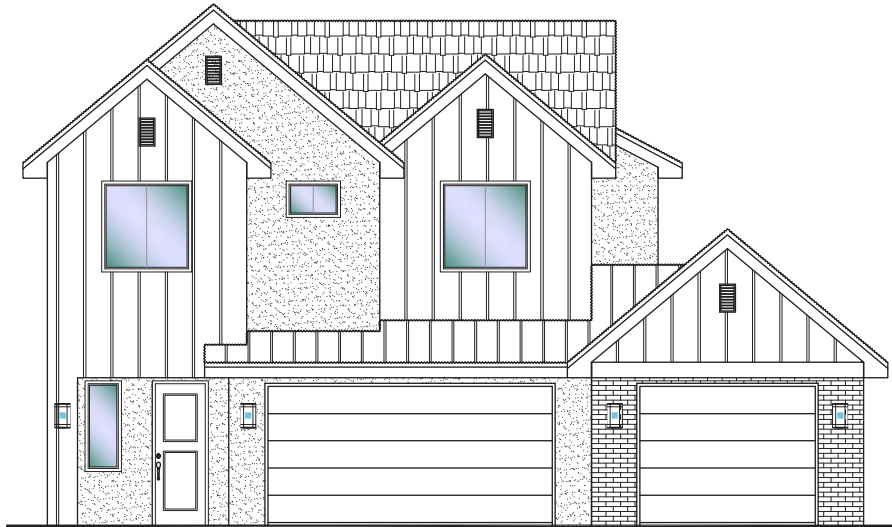


Desert Reserve #304 - FOR SALE*
4 Bed | 2.5 Bath | 3 Car Garage

S&S Homes

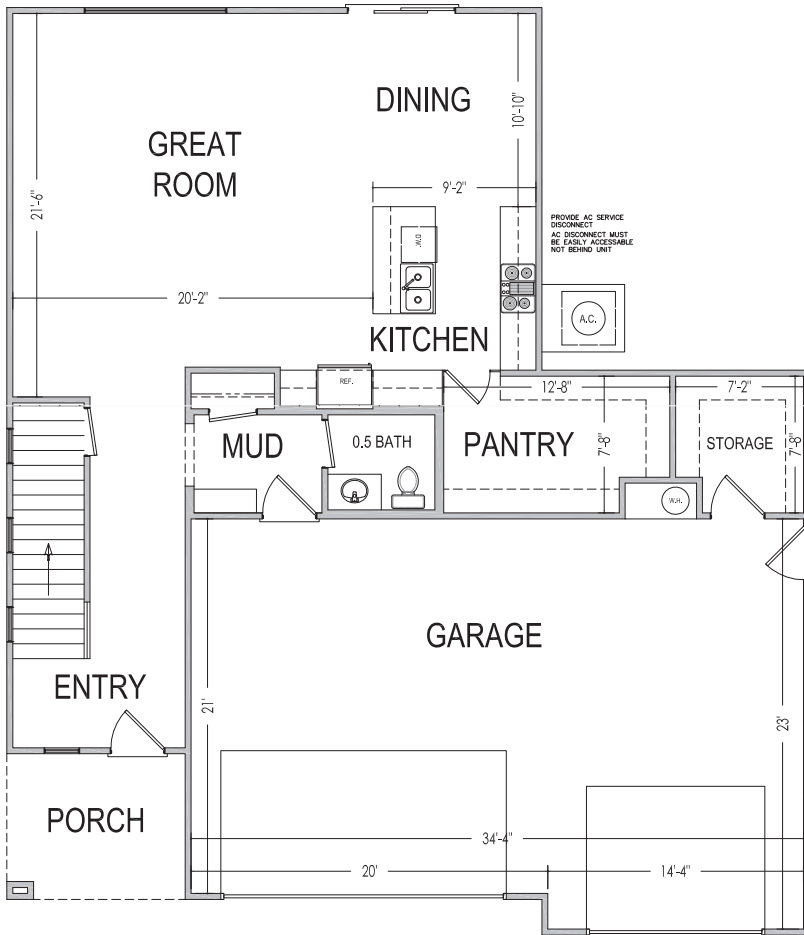
www.sshomes.info

4231 E. El Capitan Way
St. George, UT 84790

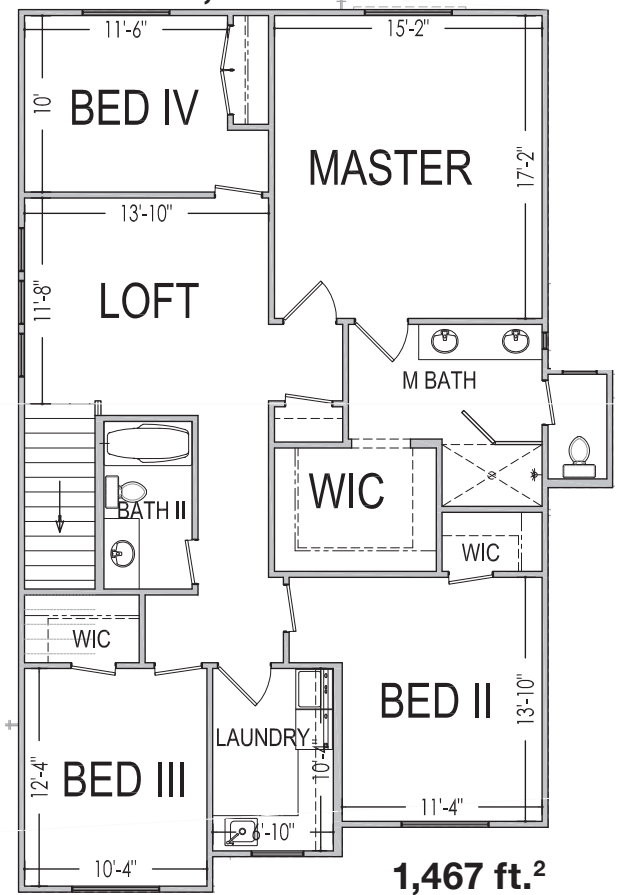


45'x52'

2,520 ft.²



1,053 ft.²



1,467 ft.²

*Prices, estimated completion dates, elevations, styles, colors, features, and finished homes may vary from the architectural rendering and are subject to change without notice or obligation. Square footage is estimated. Scan, Download & Register for free in the NoviHome App for more information on all our homes and neighborhoods.



Agent: Shae Leonard
(435)668-3096 - shae@ssrealtysolutions.com



MULTIPLE LISTING SERVICE
MLS



S&S Realty SOLUTIONS

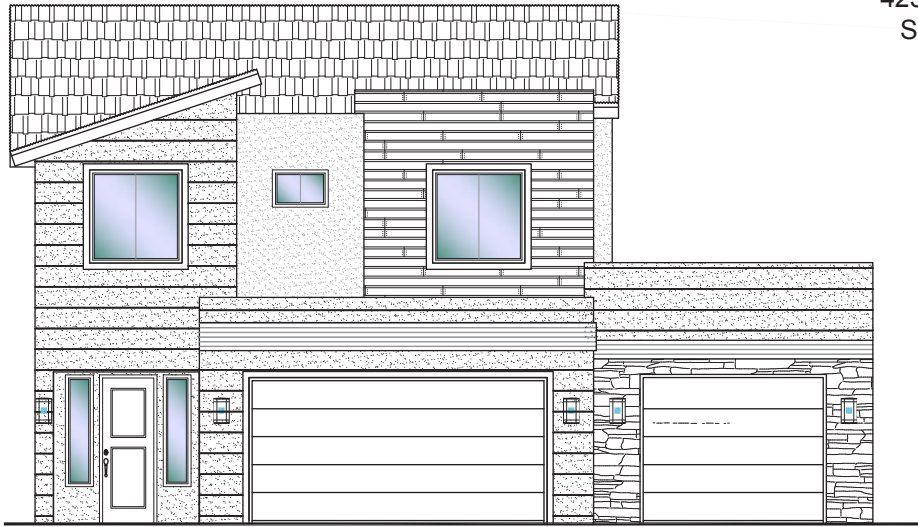


Desert Reserve #305 - FOR SALE*
3 Bed | 2.5 Bath | 3 Car Garage

S&S Homes

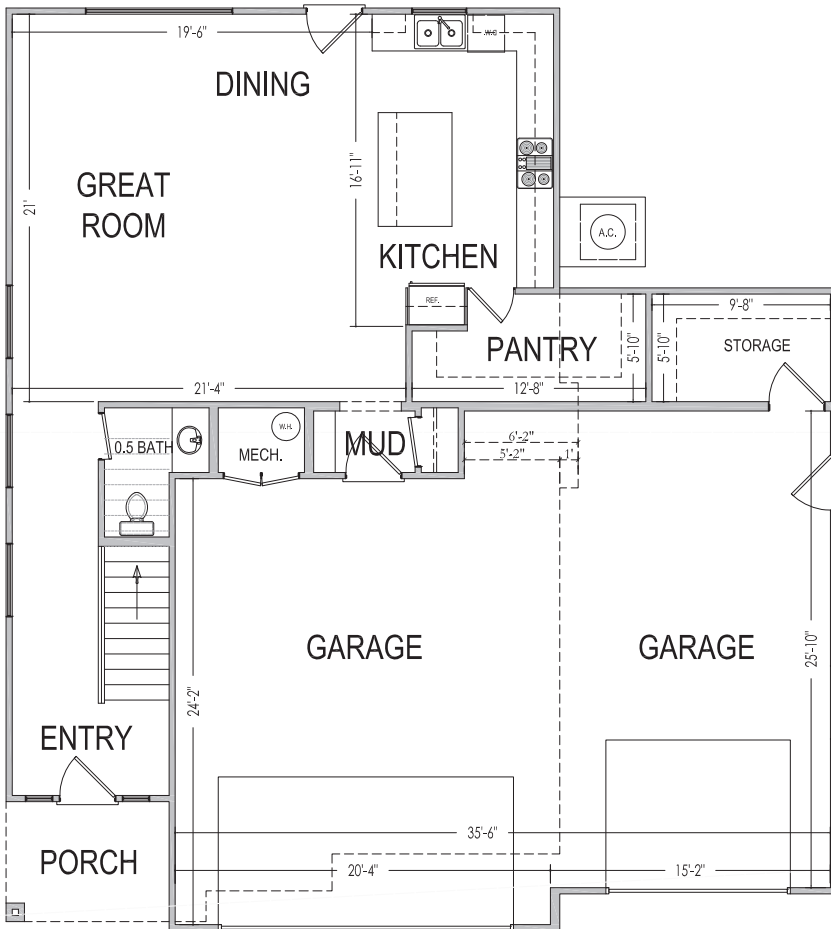
www.sshomes.info

4237 E. El Capitan Way
St. George, UT 84790

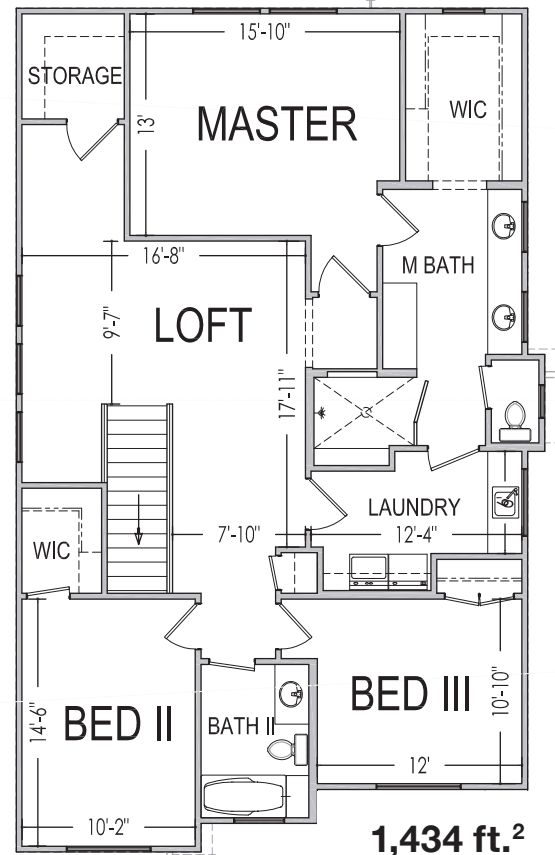


45'x50'

2,372 ft.²



938 ft.²



1,434 ft.²

*Prices, estimated completion dates, elevations, styles, colors, features, and finished homes may vary from the architectural rendering and are subject to change without notice or obligation. Square footage is estimated. Scan, Download & Register for free in the NoviHome App for more information on all our homes and neighborhoods.



Agent: Shae Leonard
(435)668-3096 - shae@ssrealtysolutions.com



MULTIPLE LISTING SERVICE
MLS



S&S Realty
SOLUTIONS

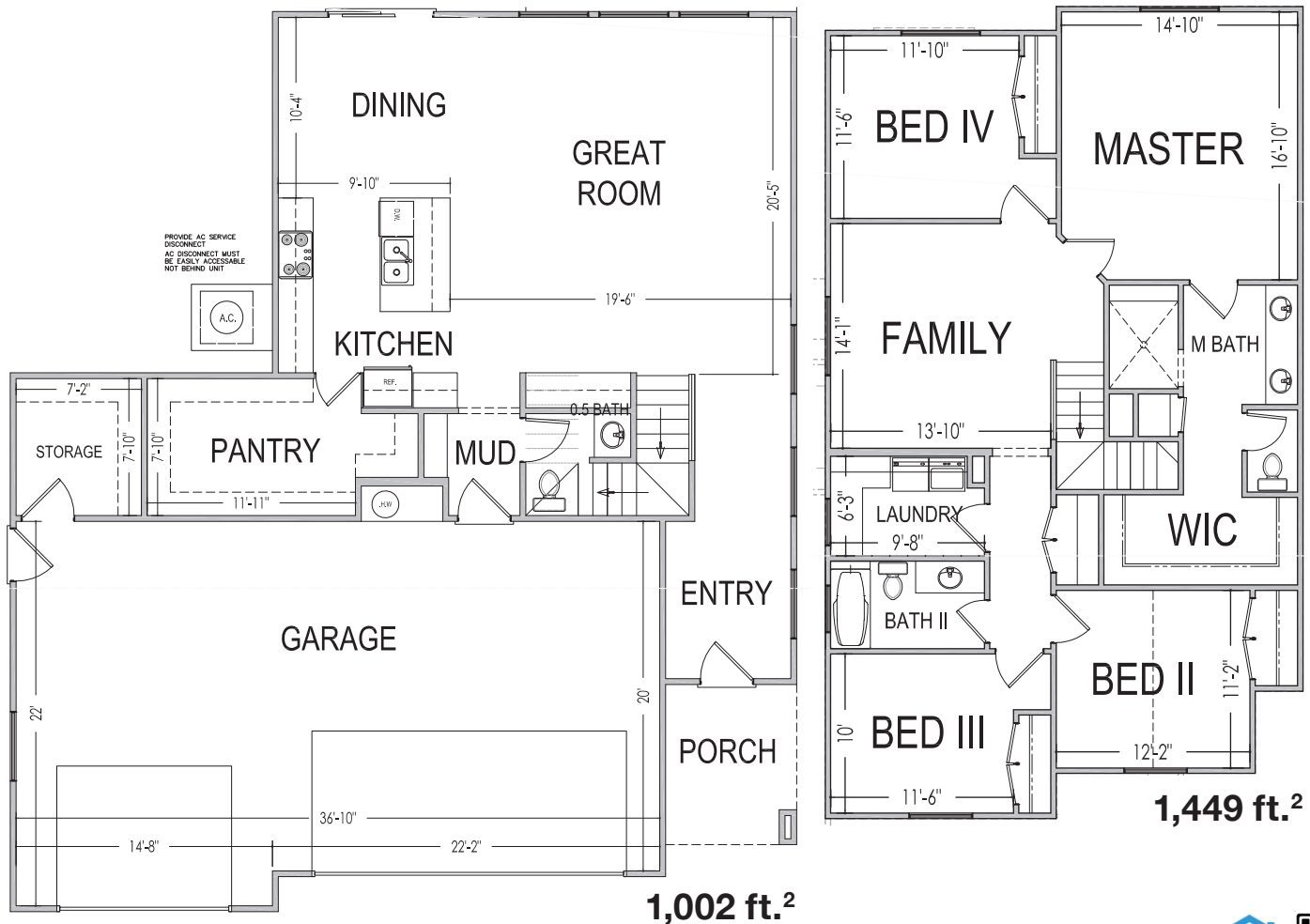
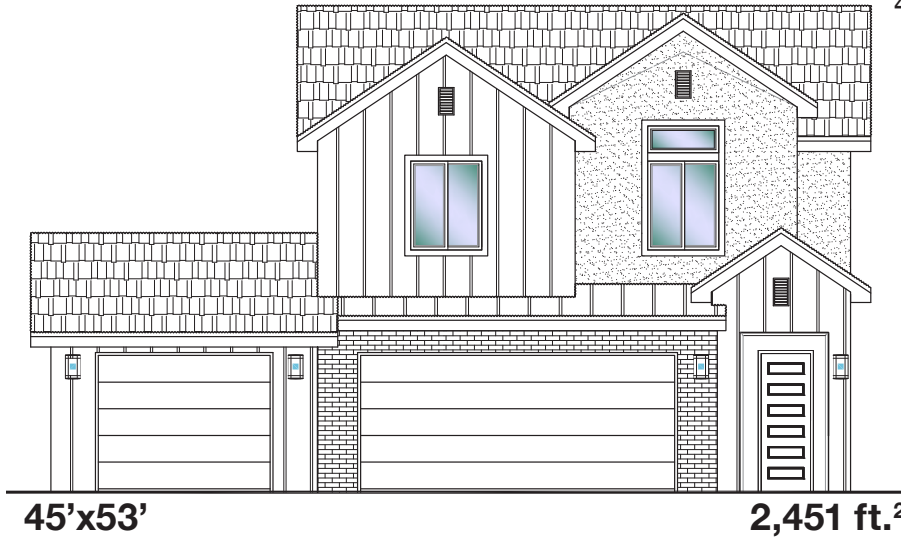


Desert Reserve #306 - FOR SALE*
4 Bed | 2.5 Bath | 3 Car Garage

S&S Homes

www.sshomes.info

4247 E. El Capitan Way
St. George, UT 84790



*Prices, estimated completion dates, elevations, styles, colors, features, and finished homes may vary from the architectural rendering and are subject to change without notice or obligation. Square footage is estimated. Scan, Download & Register for free in the NoviHome App for more information on all our homes and neighborhoods.



Agent: Shae Leonard
(435)668-3096 - shae@ssrealtysolutions.com



MULTIPLE LISTING SERVICE
MLS



S&S Realty
SOLUTIONS



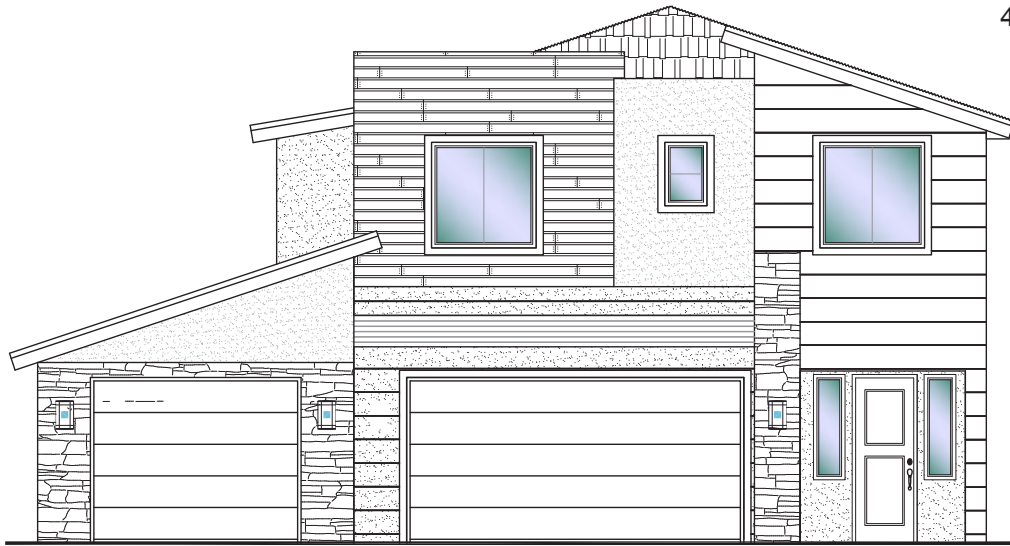
Desert Reserve

#307 - FOR SALE*
4 Bed | 2.5 Bath | 3 Car Garage

S&S Homes

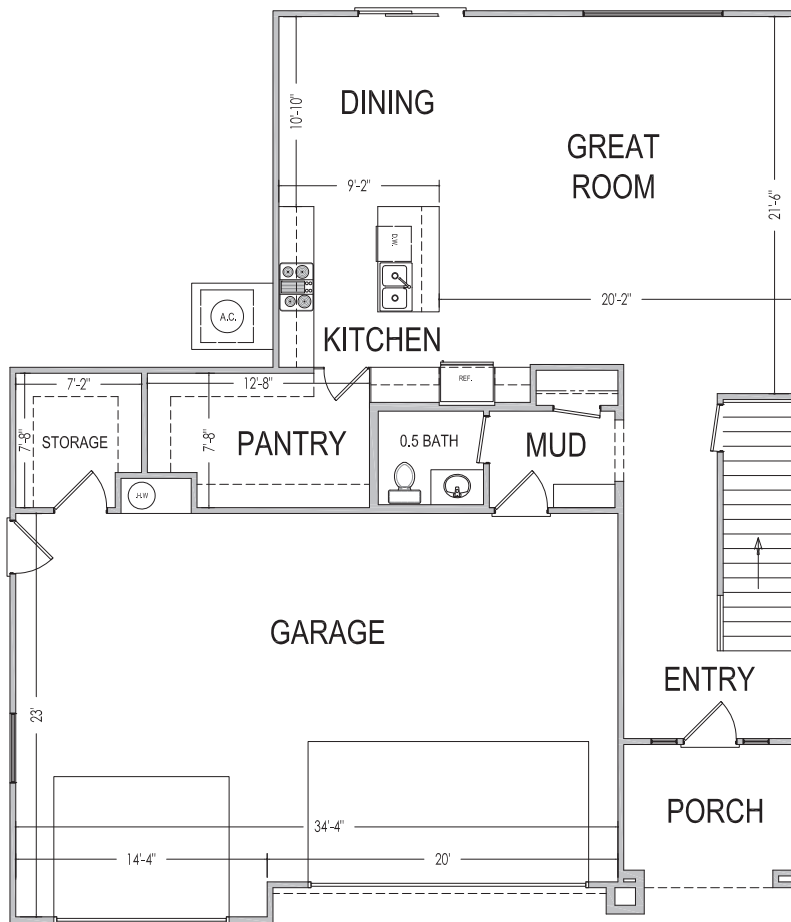
www.sshomes.info

4253 E. El Capitan Way
St. George, UT 84790

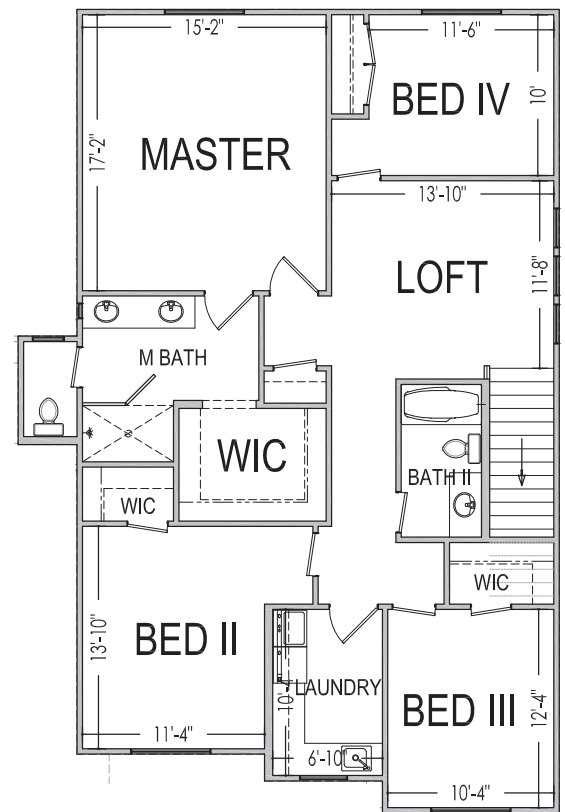


45'x52'

2,520 ft.²



1,053 ft.²



1,467 ft.²

*Prices, estimated completion dates, elevations, styles, colors, features, and finished homes may vary from the architectural rendering and are subject to change without notice or obligation. Square footage is estimated. [Scan, Download & Register for free in the NoviHome App for more information on all our homes and neighborhoods.](#)



Agent: Shae Leonard
(435)668-3096 - shae@ssrealtysolutions.com



MULTIPLE LISTING SERVICE
MLS



S&S Realty
SOLUTIONS

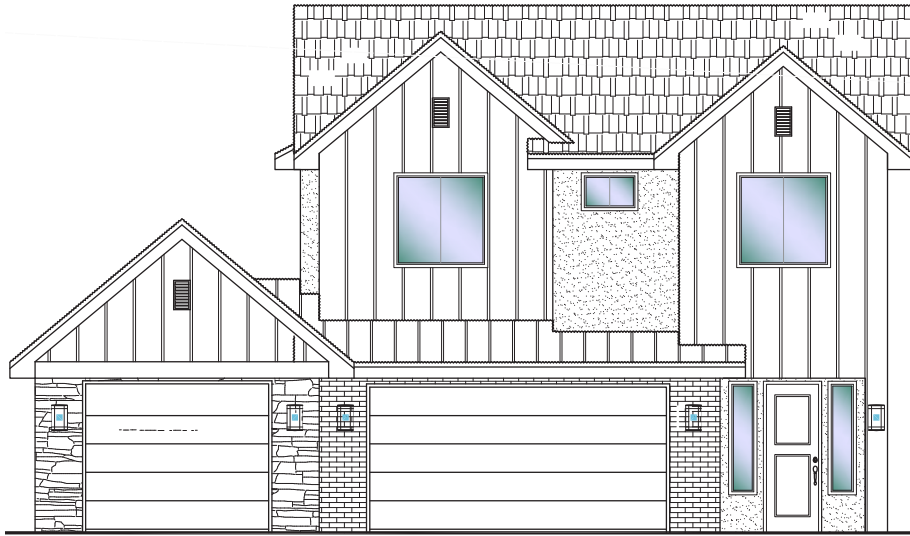


Desert Reserve #308 - FOR SALE*
3 Bed | 2.5 Bath | 3 Car Garage

S&S Homes

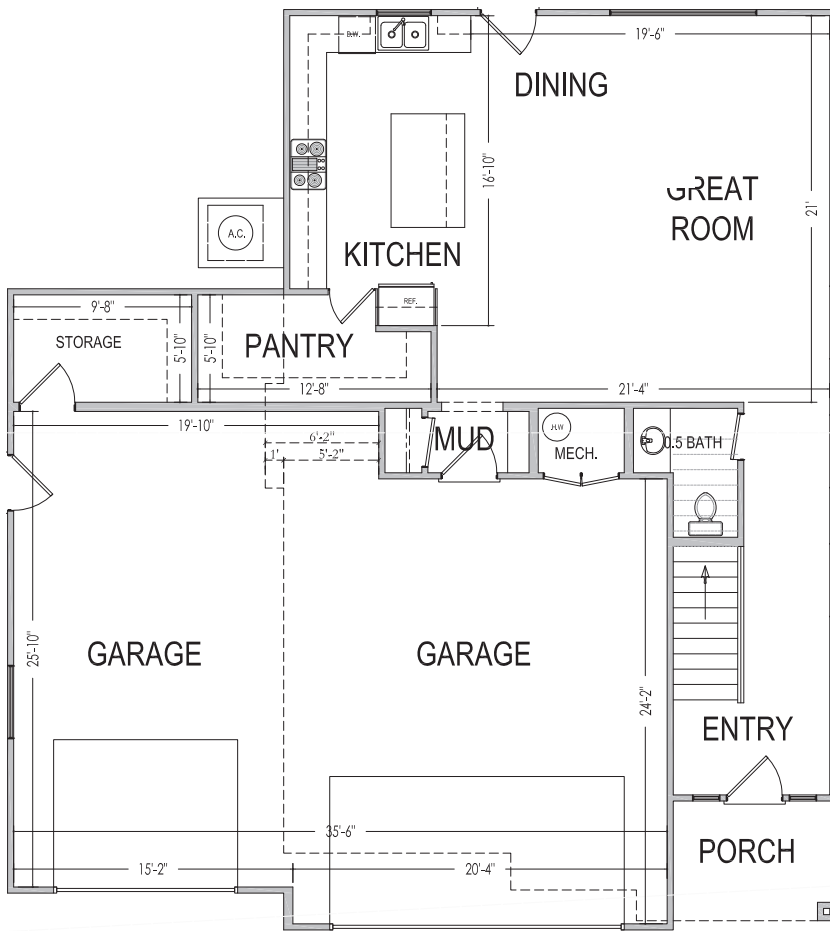
www.sshomes.info

4261 E. El Capitan Way
St. George, UT 84790

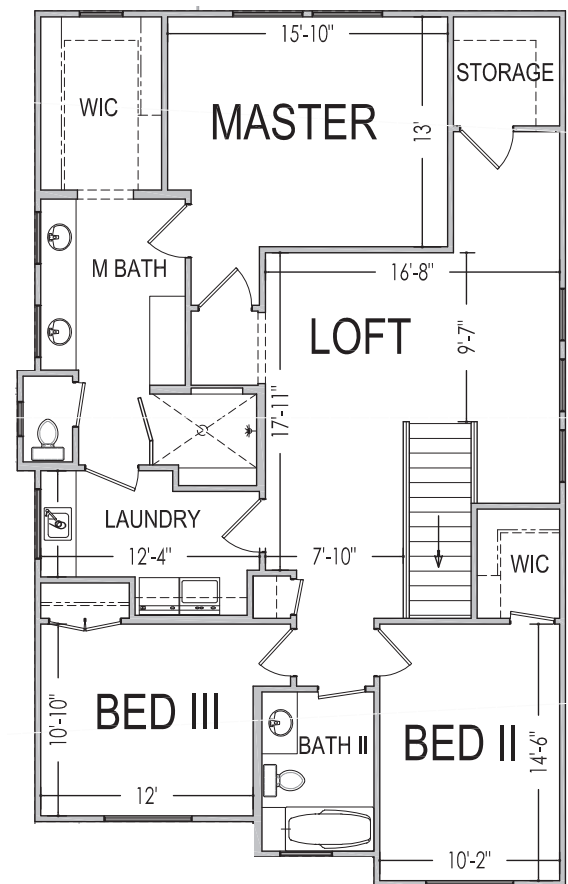


45'x50'

2,372 ft.²



938 ft.²



1,434 ft.²

*Prices, estimated completion dates, elevations, styles, colors, features, and finished homes may vary from the architectural rendering and are subject to change without notice or obligation. Square footage is estimated. Scan, Download & Register for free in the NoviHome App for more information on all our homes and neighborhoods.



Agent: Shae Leonard
(435)668-3096 - shae@ssrealtysolutions.com



MULTIPLE LISTING SERVICE
MLS



S&S Realty
SOLUTIONS



Desert Reserve #309 - FOR SALE*
4 Bed | 2.5 Bath | 3 Car Garage

S&S Homes

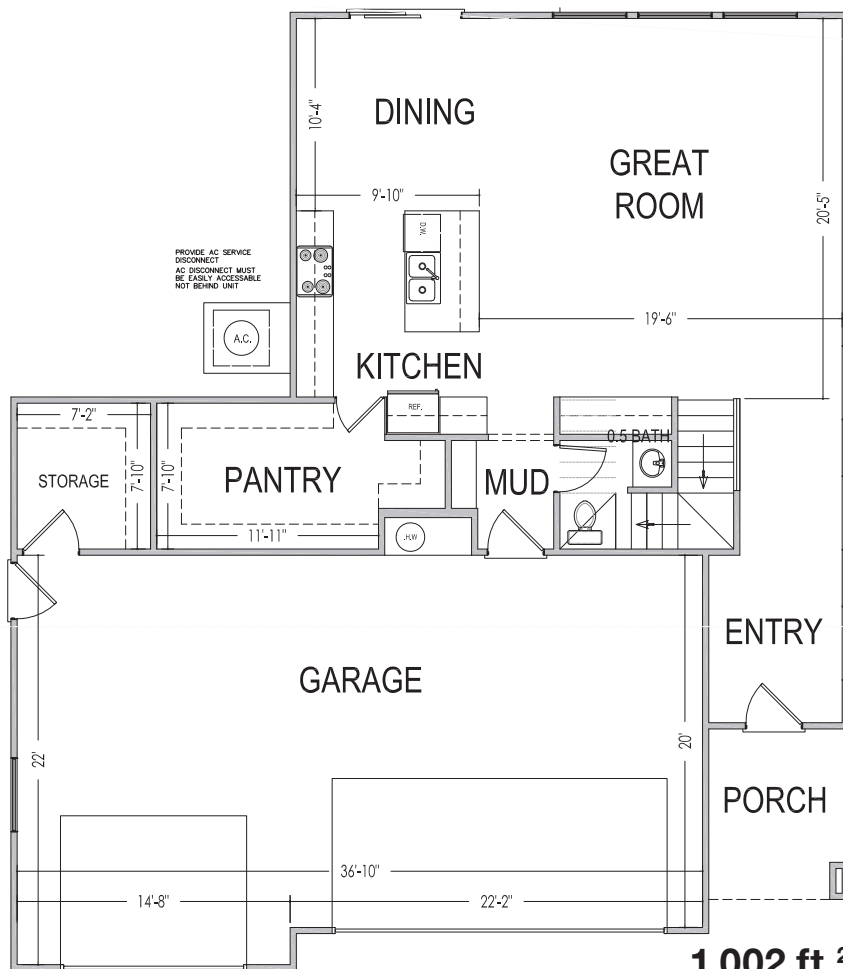
www.sshomes.info

4267 E. El Capitan Way
St. George, UT 84790

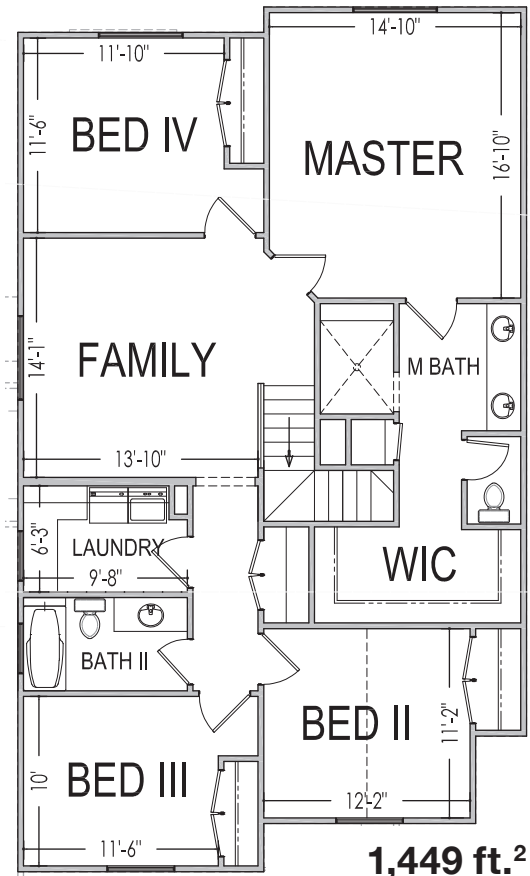


45'x53'

2,451 ft.²



1,002 ft.²



1,449 ft.²

*Prices, estimated completion dates, elevations, styles, colors, features, and finished homes may vary from the architectural rendering and are subject to change without notice or obligation. Square footage is estimated. Scan, Download & Register for free in the NoviHome App for more information on all our homes and neighborhoods.



Agent: Shae Leonard
(435)668-3096 - shae@ssrealtysolutions.com



MULTIPLE LISTING SERVICE
MLS



S&S Realty
SOLUTIONS



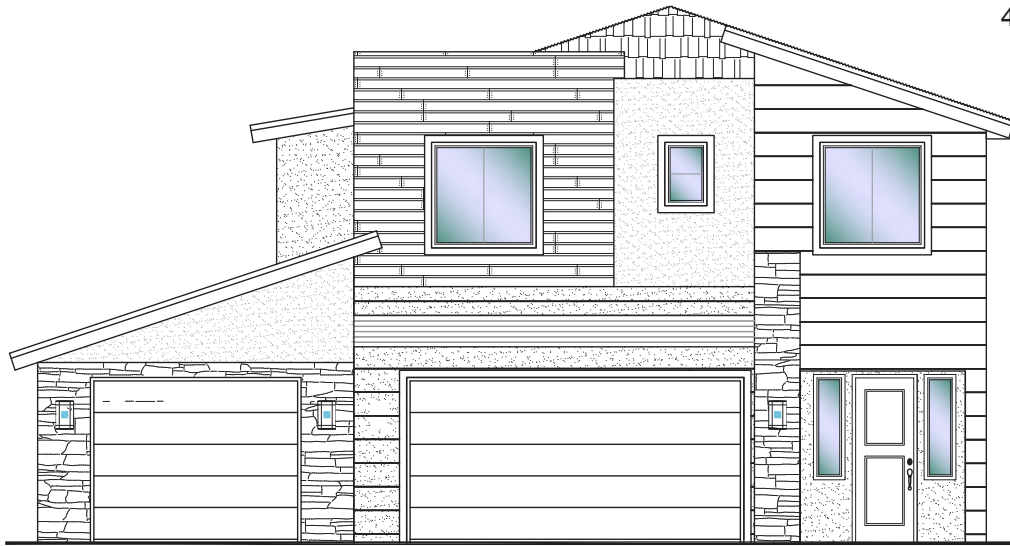
Desert Reserve

#310 - FOR SALE*
4 Bed | 2.5 Bath | 3 Car Garage

S&S Homes

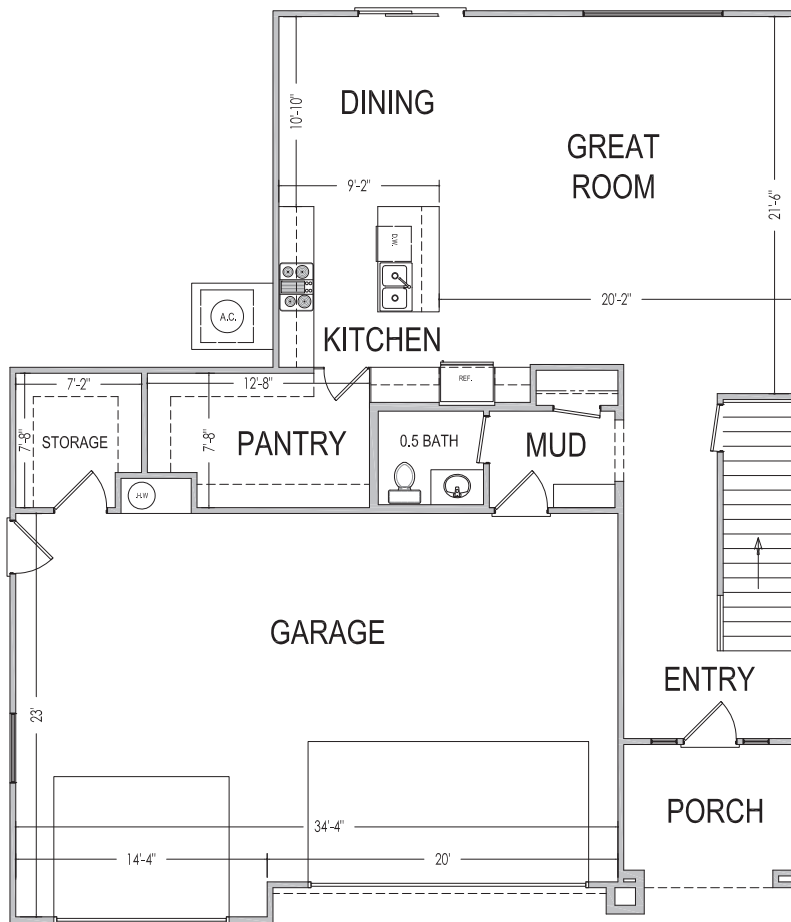
www.sshomes.info

4273 E. El Capitan Way
St. George, UT 84790

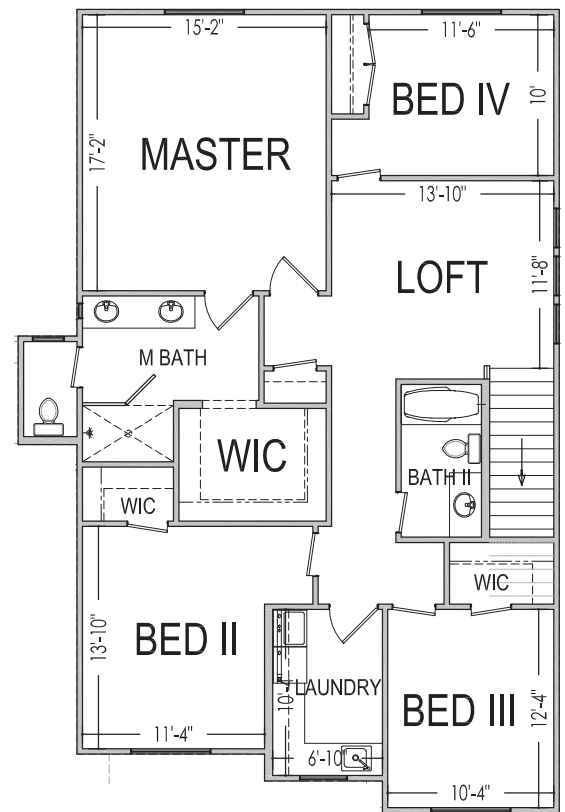


45'x52'

2,520 ft.²



1,053 ft.²



1,467 ft.²

*Prices, estimated completion dates, elevations, styles, colors, features, and finished homes may vary from the architectural rendering and are subject to change without notice or obligation. Square footage is estimated. [Scan, Download & Register for free in the NoviHome App for more information on all our homes and neighborhoods.](#)



Agent: Shae Leonard
(435)668-3096 - shae@ssrealtysolutions.com



MULTIPLE LISTING SERVICE
MLS



S&S Realty
SOLUTIONS



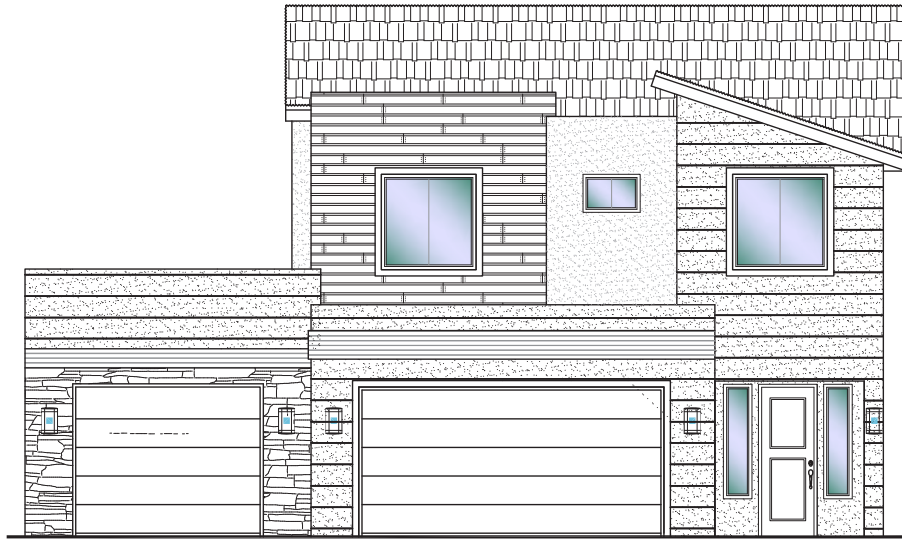
Desert Reserve

#311 - FOR SALE*
3 Bed | 2.5 Bath | 3 Car Garage

S&S Homes

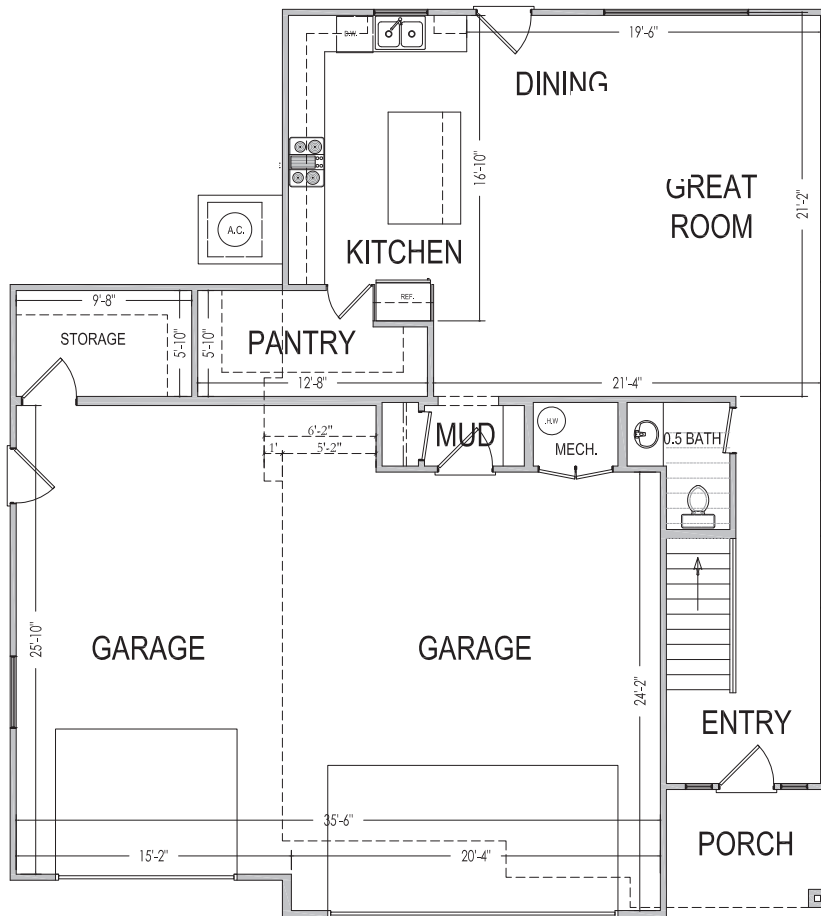
www.sshomes.info

4285 E. El Capitan Way
St. George, UT 84790

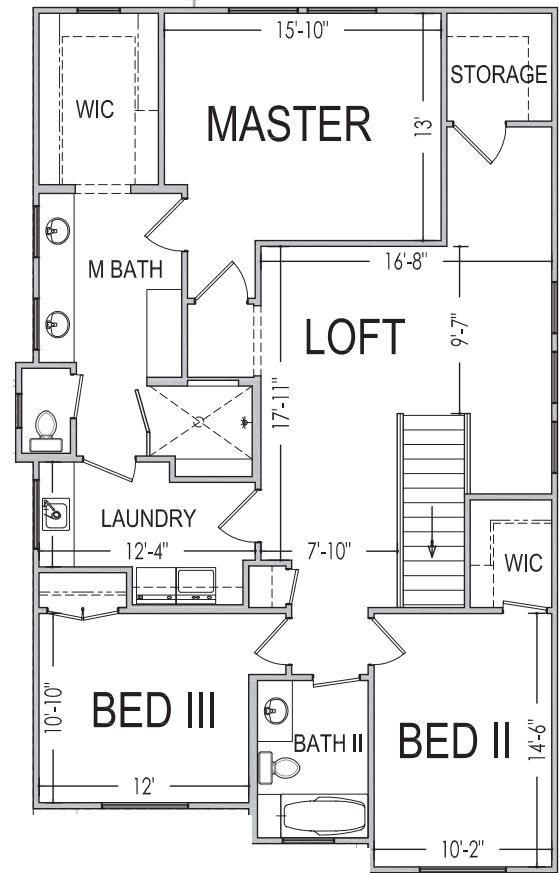


45'x50'

2,372 ft.²



938 ft.²



1,434 ft.²

*Prices, estimated completion dates, elevations, styles, colors, features, and finished homes may vary from the architectural rendering and are subject to change without notice or obligation. Square footage is estimated. Scan, Download & Register for free in the NoviHome App for more information on all our homes and neighborhoods.



Agent: Shae Leonard
(435)668-3096 - shae@ssrealtysolutions.com



MULTIPLE LISTING SERVICE
MLS



S&S Realty
SOLUTIONS



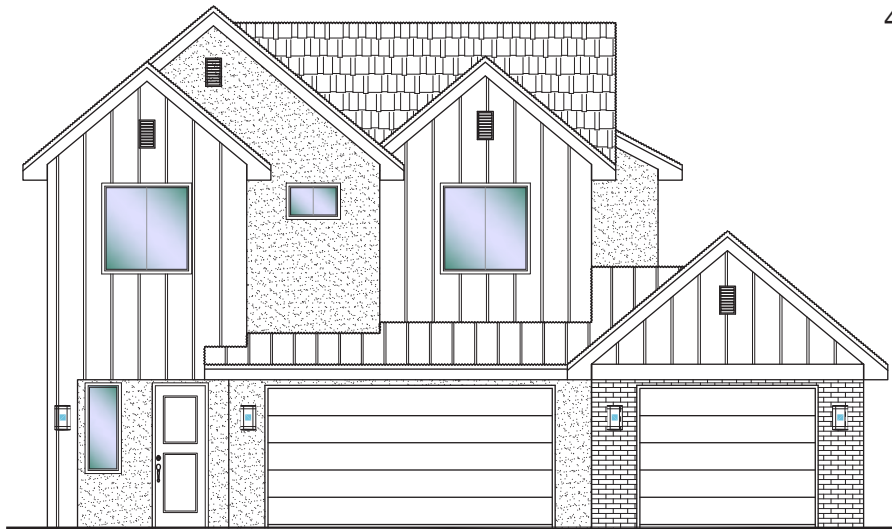
Desert Reserve

#312 - FOR SALE*
4 Bed | 2.5 Bath | 3 Car Garage

S&S Homes

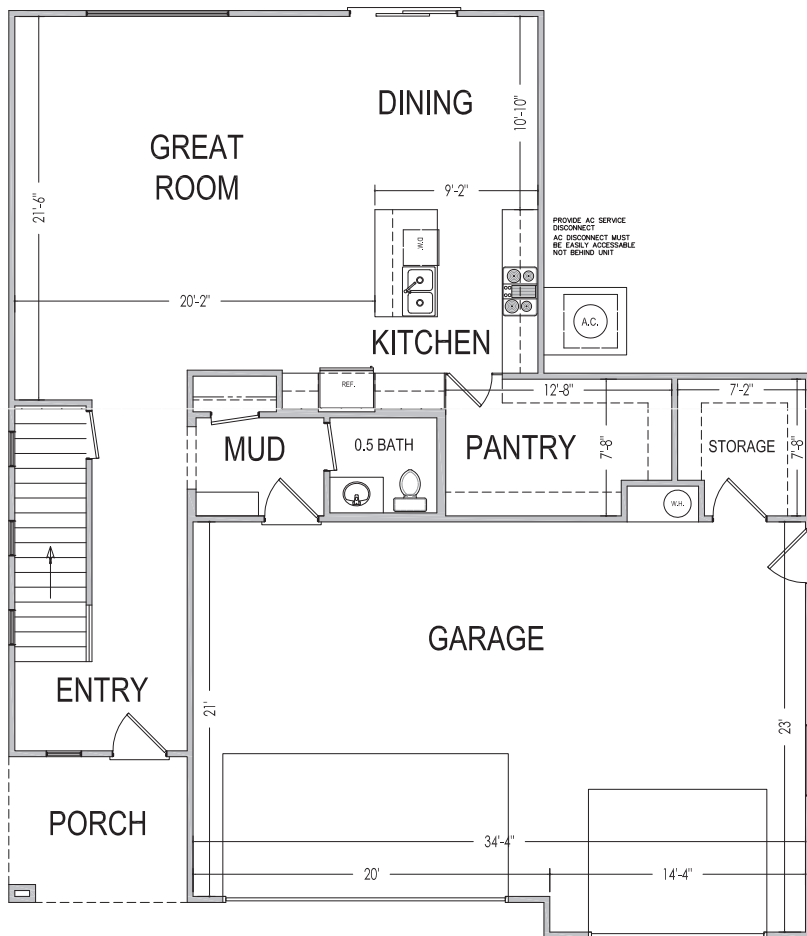
www.sshomes.info

4270 E. EL Capitan Way
St. George, UT 84790

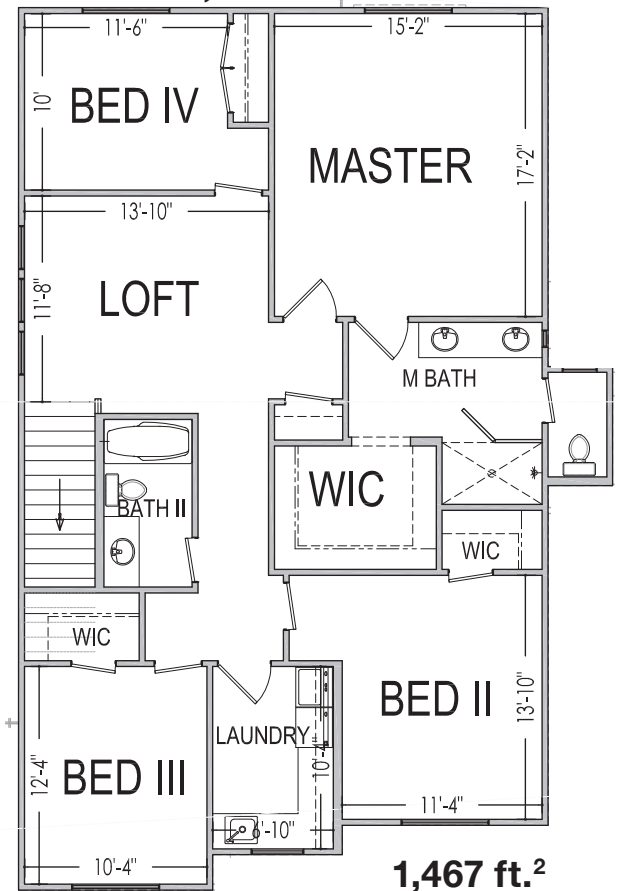


45'x52'

2,520 ft.²



1,053 ft.²



1,467 ft.²

*Prices, estimated completion dates, elevations, styles, colors, features, and finished homes may vary from the architectural rendering and are subject to change without notice or obligation. Square footage is estimated. [Scan, Download & Register for free in the NoviHome App for more information on all our homes and neighborhoods.](#)



Agent: Shae Leonard
(435)668-3096 - shae@ssrealtysolutions.com



MULTIPLE LISTING SERVICE
MLS



S&S Realty SOLUTIONS



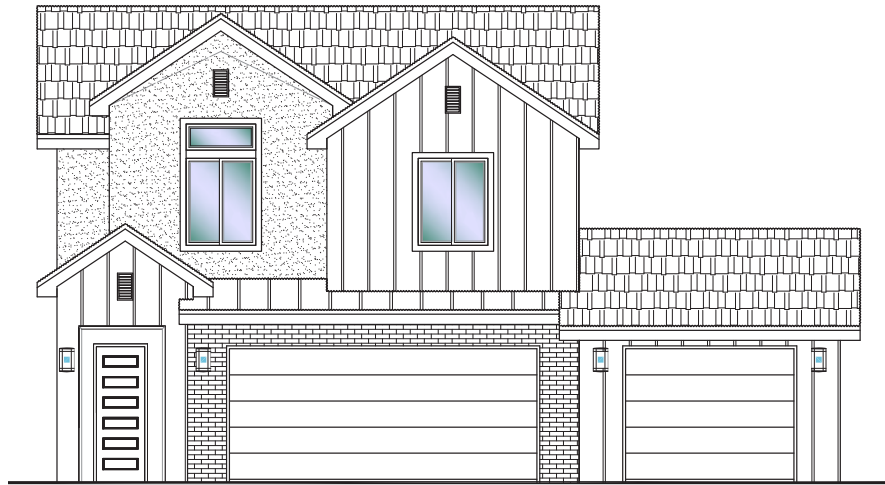
Desert Reserve

#313 - FOR SALE*
4 Bed | 2.5 Bath | 3 Car Garage

S&S Homes

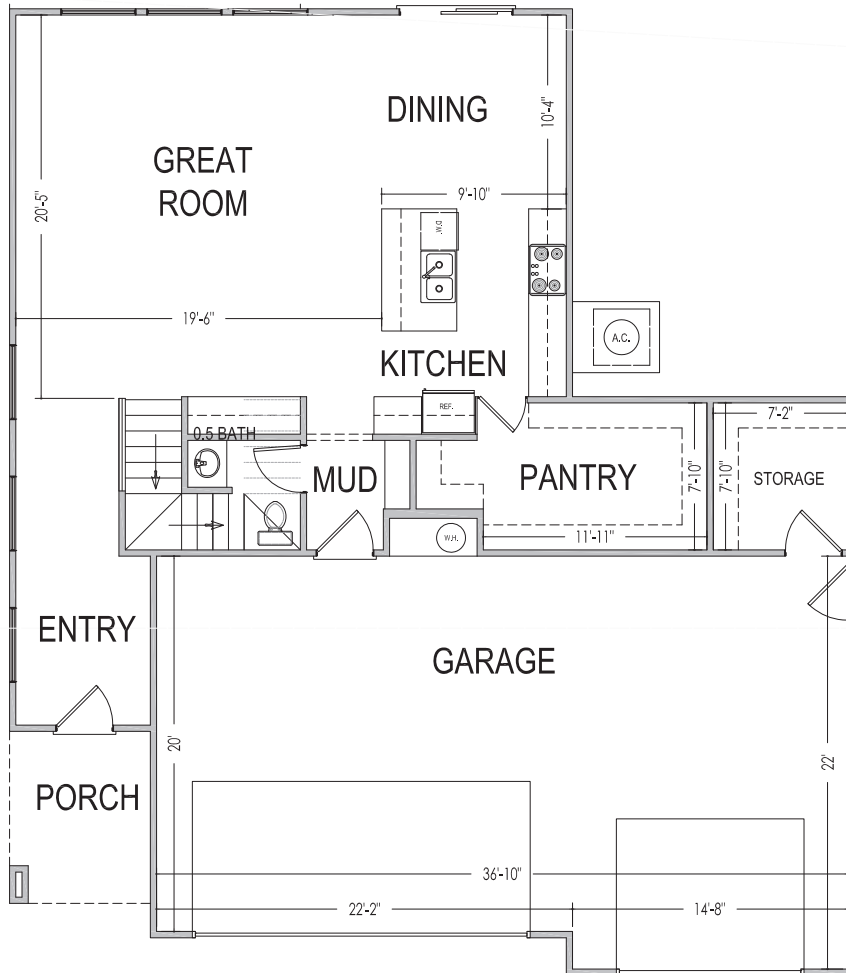
www.sshomes.info

4256 E. El Capitan Way
St. George, UT 84790

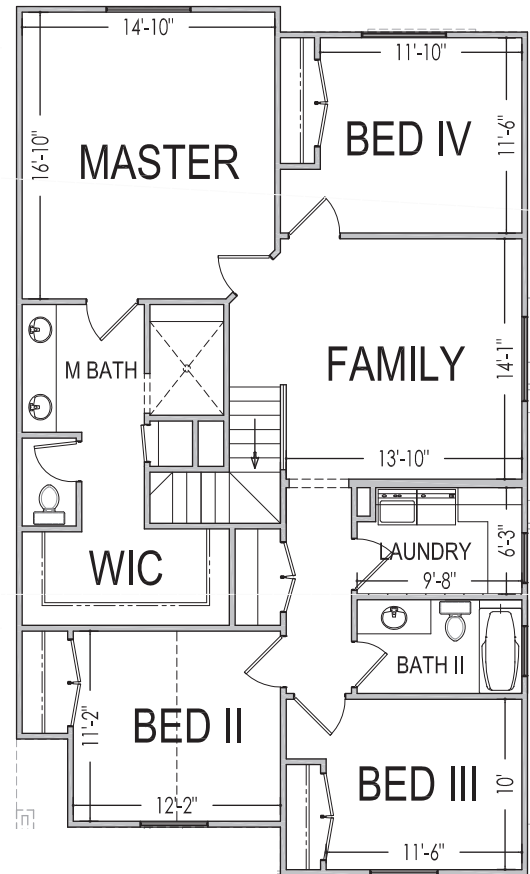


45'x53'

2,451 ft.²



1,002 ft.²



1,449 ft.²

*Prices, estimated completion dates, elevations, styles, colors, features, and finished homes may vary from the architectural rendering and are subject to change without notice or obligation. Square footage is estimated. Scan, Download & Register for free in the NoviHome App for more information on all our homes and neighborhoods.



Agent: Shae Leonard
(435)668-3096 - shae@ssrealtysolutions.com



MULTIPLE LISTING SERVICE
MLS



S&S Realty SOLUTIONS



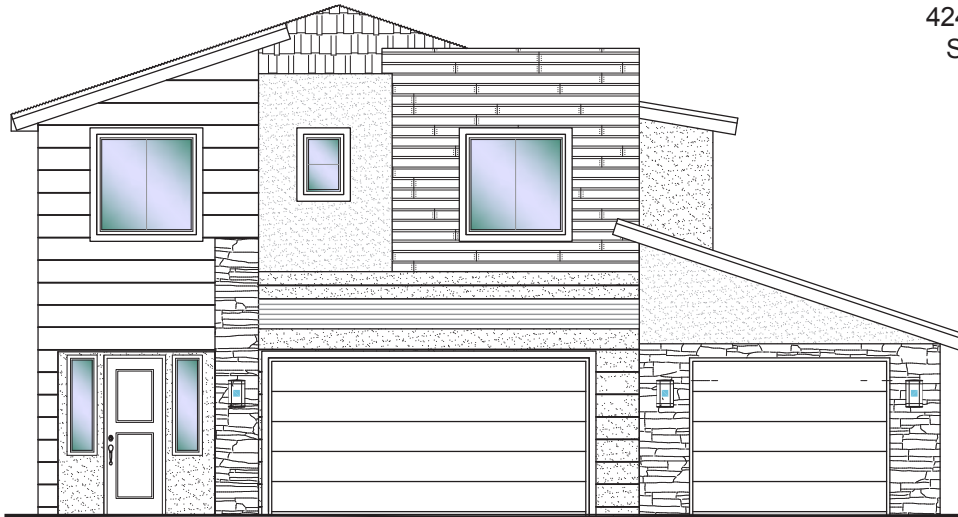
Desert Reserve

#314 - FOR SALE*
4 Bed | 2.5 Bath | 3 Car Garage

S&S Homes

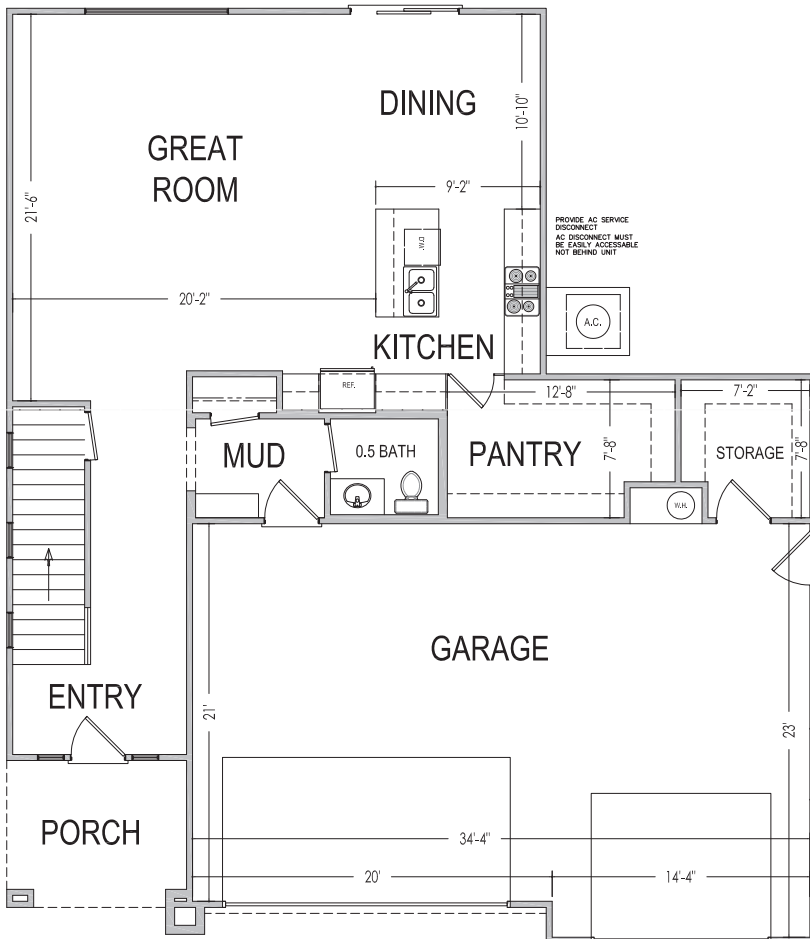
www.sshomes.info

4245 E. El Capitan Way
St. George, UT 84790

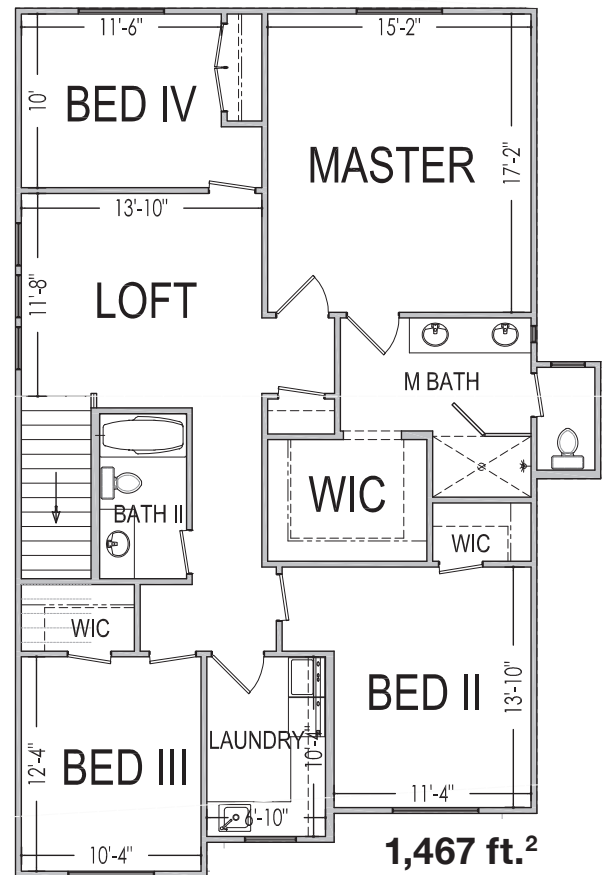


45'x52'

2,520 ft.²



1,053 ft.²



1,467 ft.²

*Prices, estimated completion dates, elevations, styles, colors, features, and finished homes may vary from the architectural rendering and are subject to change without notice or obligation. Square footage is estimated. Scan, Download & Register for free in the NoviHome App for more information on all our homes and neighborhoods.



Agent: Shae Leonard
(435)668-3096 - shae@ssrealtysolutions.com



MULTIPLE LISTING SERVICE
MLS



S&S Realty
SOLUTIONS



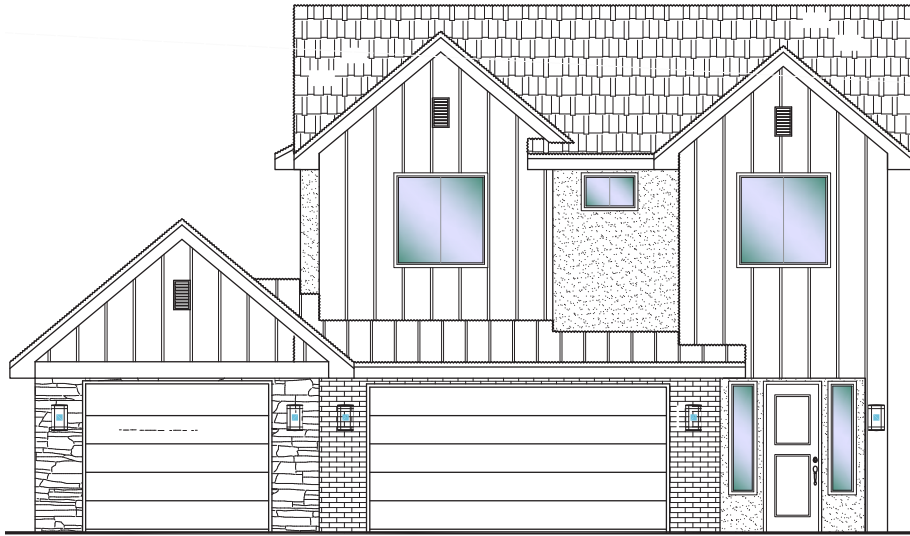
Desert Reserve

#315 - FOR SALE*
3 Bed | 2.5 Bath | 3 Car Garage

S&S Homes

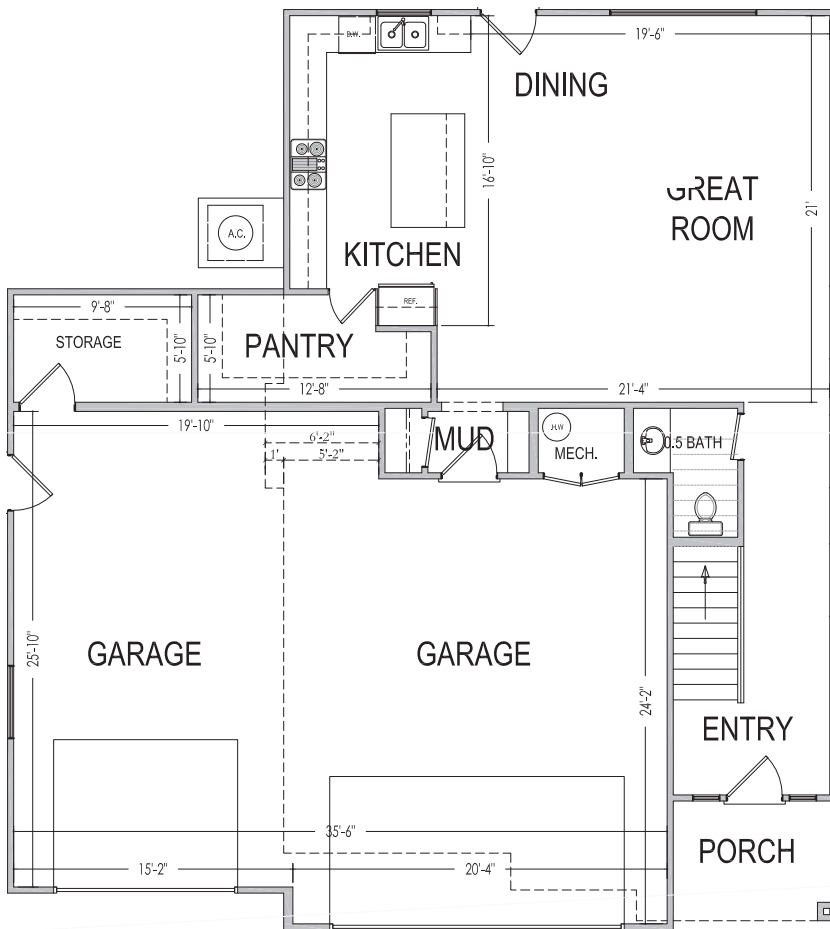
www.sshomes.info

4244 E. El Capitan Way
St. George, UT 84790

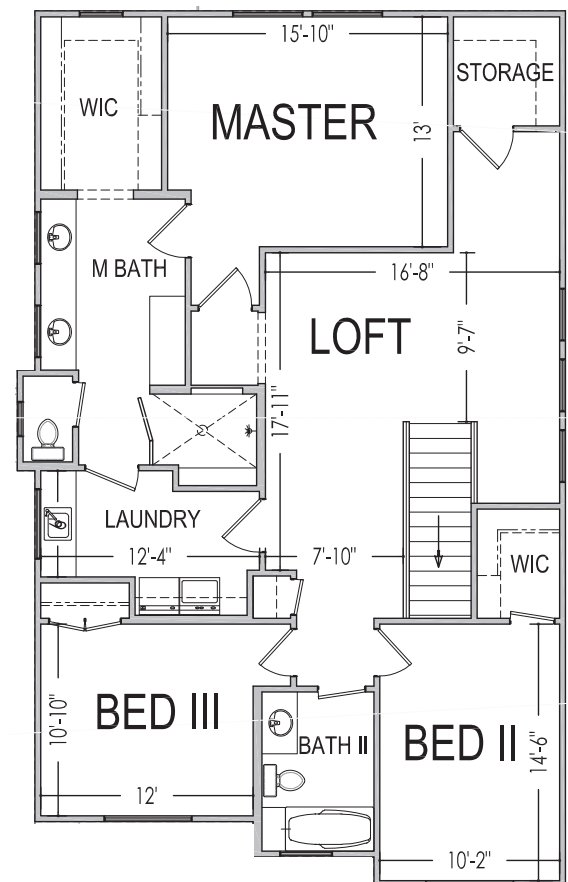


45'x50'

2,372 ft.²



938 ft.²



1,434 ft.²

*Prices, estimated completion dates, elevations, styles, colors, features, and finished homes may vary from the architectural rendering and are subject to change without notice or obligation. Square footage is estimated. Scan, Download & Register for free in the NoviHome App for more information on all our homes and neighborhoods.



Agent: Shae Leonard
(435)668-3096 - shae@ssrealtysolutions.com



MULTIPLE LISTING SERVICE
MLS



S&S Realty
SOLUTIONS



Desert Reserve #316 - FOR SALE*
4 Bed | 2.5 Bath | 3 Car Garage

S&S Homes

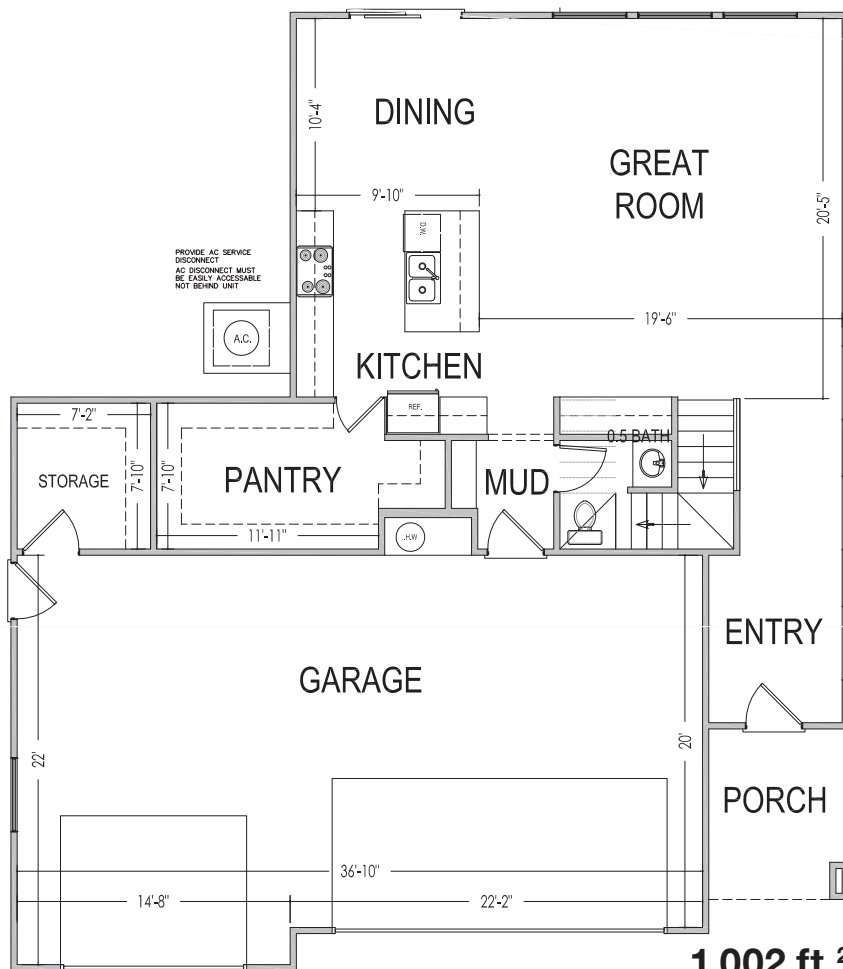
www.sshomes.info

4238 E. El Capitan Way
St. George, UT 84790

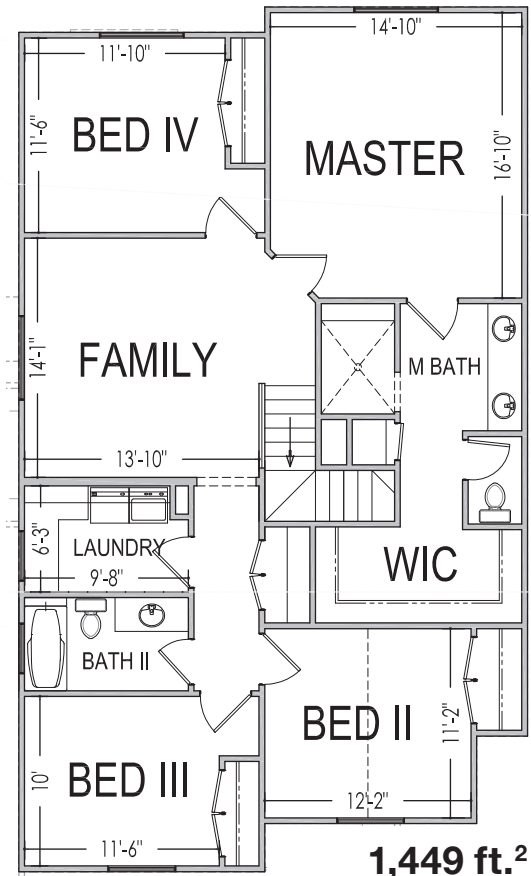


45'x53'

2,451 ft.²



1,002 ft.²



1,449 ft.²

*Prices, estimated completion dates, elevations, styles, colors, features, and finished homes may vary from the architectural rendering and are subject to change without notice or obligation. Square footage is estimated. Scan, Download & Register for free in the NoviHome App for more information on all our homes and neighborhoods.



Agent: Shae Leonard
(435)668-3096 - shae@ssrealtysolutions.com



MULTIPLE LISTING SERVICE
MLS



S&S Realty
SOLUTIONS



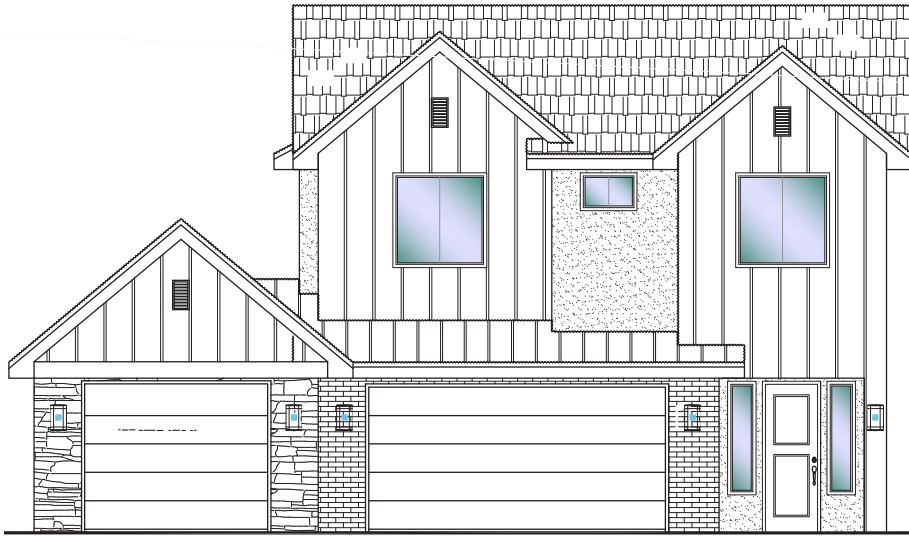
Desert Reserve

#318 - FOR SALE*
3 Bed | 2.5 Bath | 3 Car Garage

S&S Homes

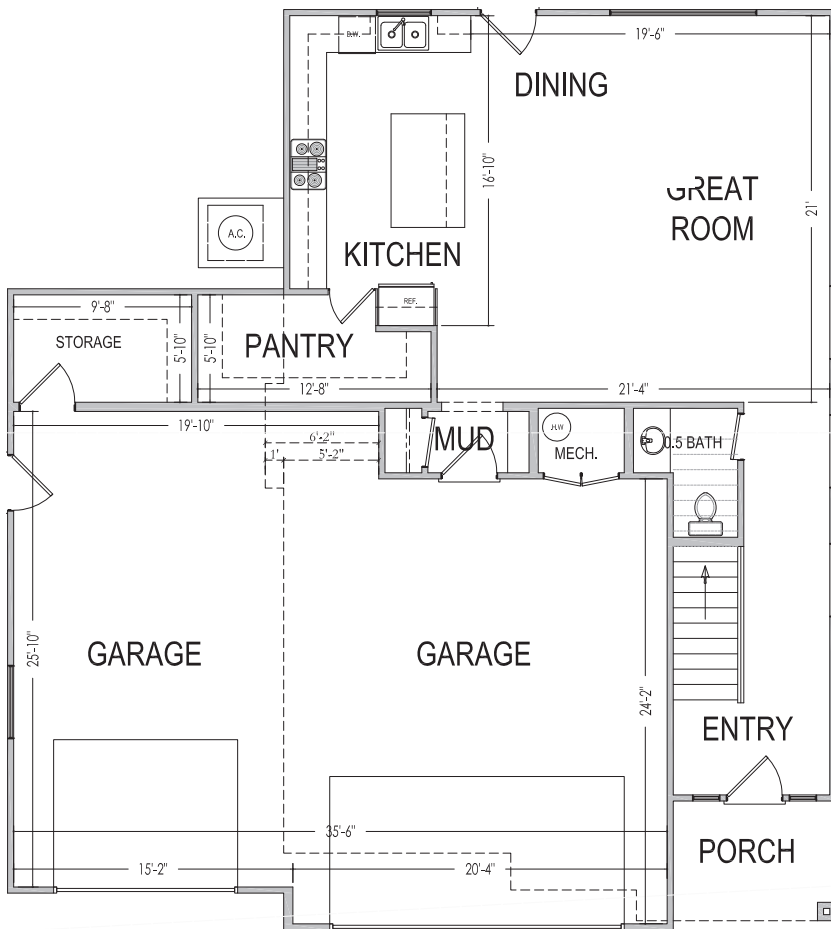
www.sshomes.info

4222 E. El Capitan Way
St. George, UT 84790

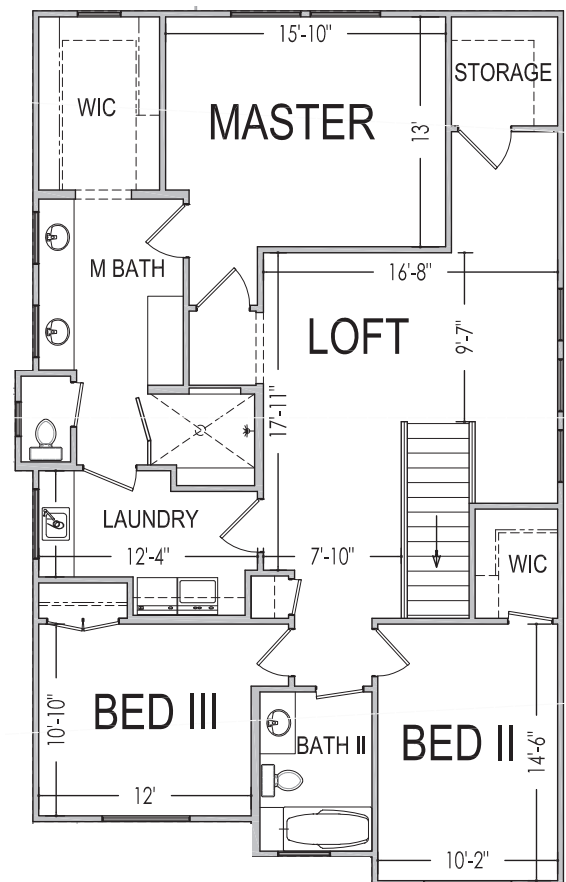


45'x50'

2,372 ft.²



938 ft.²



1,434 ft.²

*Prices, estimated completion dates, elevations, styles, colors, features, and finished homes may vary from the architectural rendering and are subject to change without notice or obligation. Square footage is estimated. Scan, Download & Register for free in the NoviHome App for more information on all our homes and neighborhoods.



Agent: Shae Leonard
(435)668-3096 - shae@ssrealtysolutions.com



MULTIPLE LISTING SERVICE
MLS



S&S Realty
SOLUTIONS



Desert Reserve

HOA ANNUAL DUES

S&S Homes

www.sshomes.info

HOA Includes:

Landscape Maintenance of Common Areas

Liability Insurance

Administration / Management

Annual Total \$180.00

*This list includes some but not all items covered by your HOA dues.

Payable to:

Desert Reserve HOA
1240 E. 100 S. Ste. #5
St. George, Utah 84790
Phone: (435) 619-5336



Desert Reserve

At the time of purchase (one-time fee):

New Buyer Administration Fee..... \$50

*Prices and estimated completion dates are subject to change without notice or obligation. Finished homes may vary from the architectural rendering. Square footage is estimated. [Scan, Download & Register for free in the NoviHome App for more information on all our homes and neighborhoods.](#)



Agent: Shae Leonard
(435)668-3096 - shae@ssrealtysolutions.com

