



**DESERT  
CLIFFS**

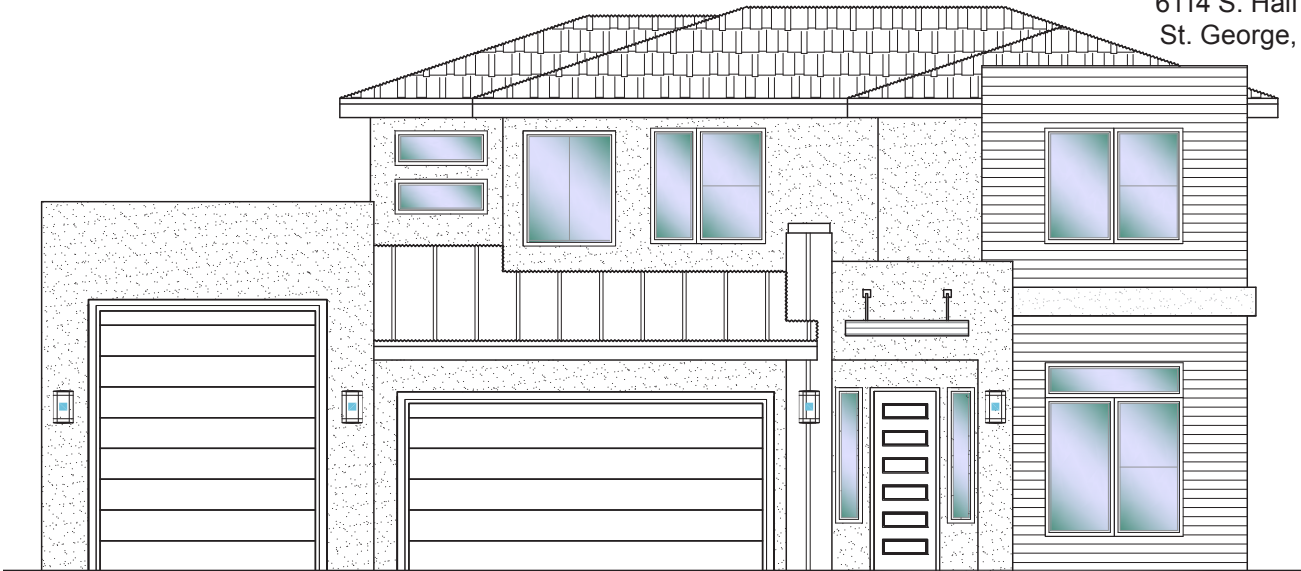
**#302 - FOR SALE\***

4 Bed+Office | 2.5 Bath | 3 Car-Boat Garage

**S&S Homes**

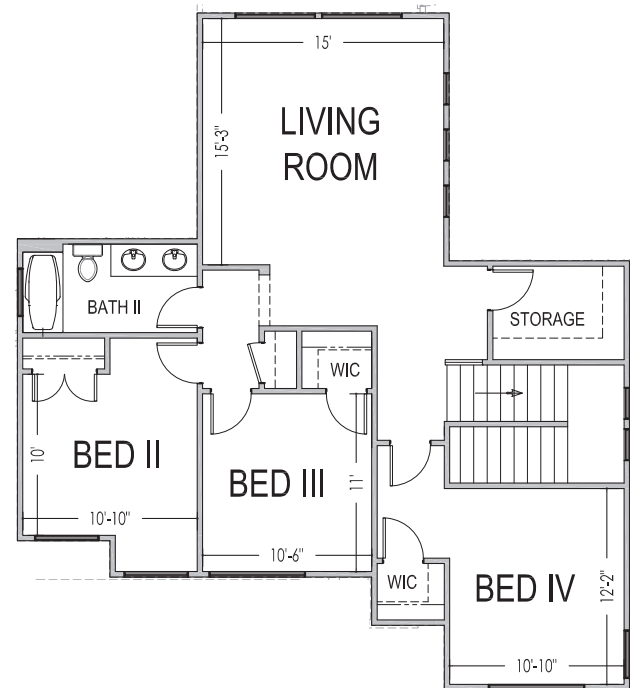
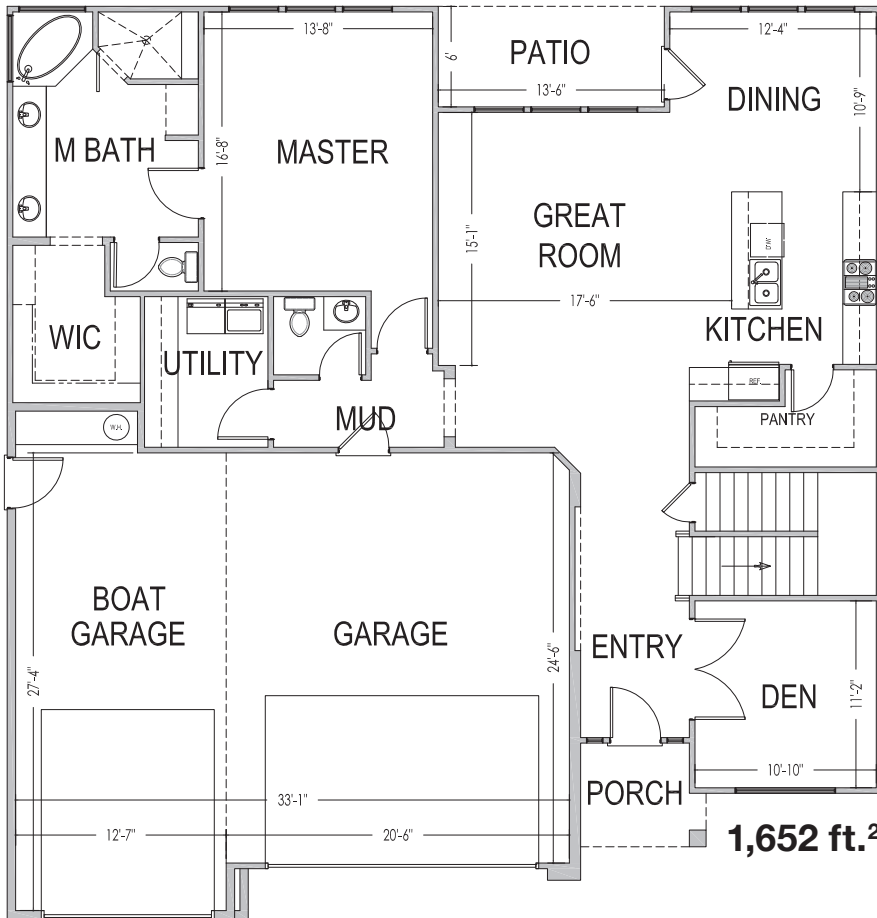
www.sshomes.info

6114 S. Half Dome Ln.  
St. George, UT 84790



**52'x54'**

**2,725 ft.<sup>2</sup>**



\*Prices, estimated completion dates, elevations, styles, colors, features, and finished homes may vary from the architectural rendering and are subject to change without notice or obligation. Square footage is estimated. [Scan, Download & Register for free in the NoviHome App for more information on all our homes and neighborhoods.](#)



**Agent: Shae Leonard**  
(435)668-3096 - shae@ssrealtysolutions.com



MULTIPLE LISTING SERVICE  
**MLS**



**S&S Realty**  
SOLUTIONS