



#87 - FOR SALE*
 3 Bed | 2.5 Bath | 3 Car Garage

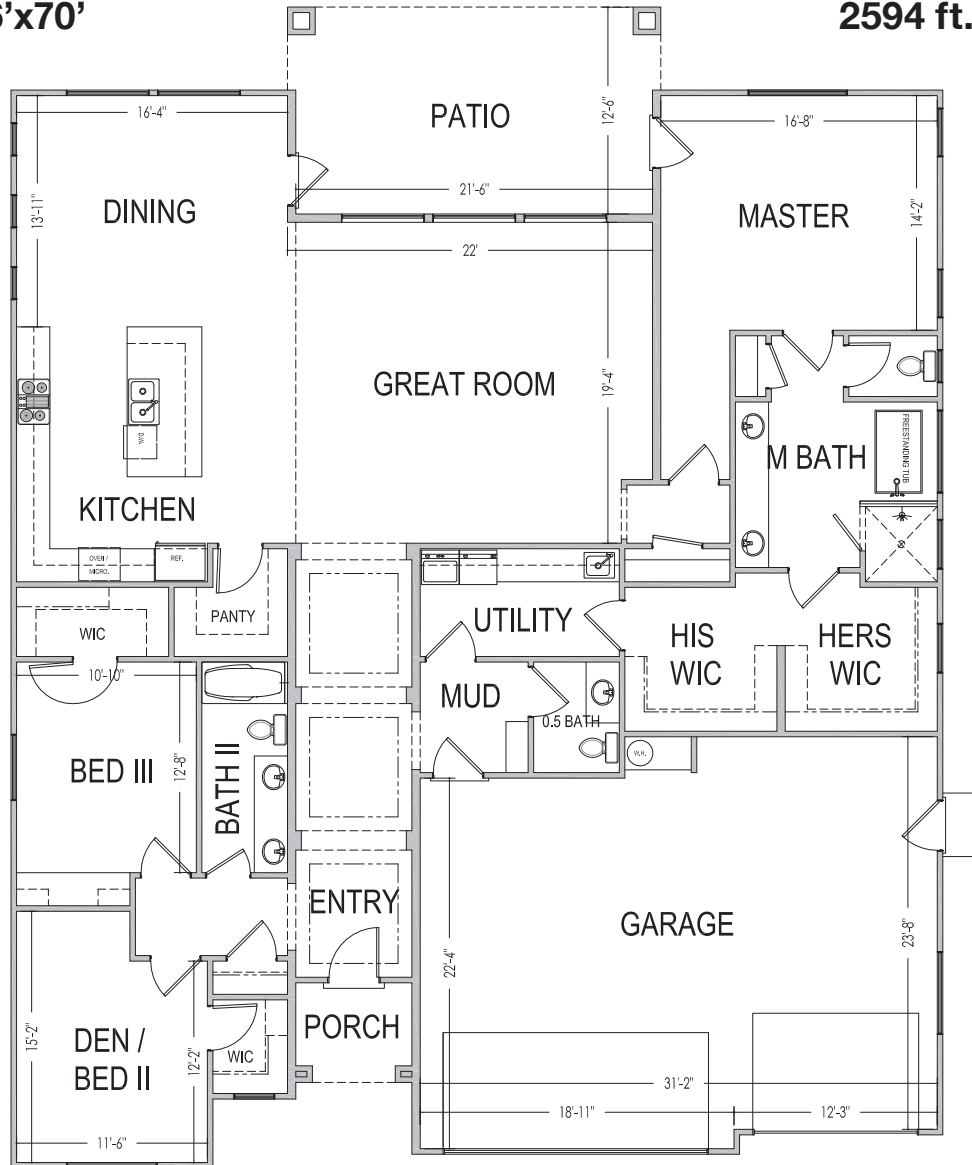
S&S Homes
 www.sshomes.info

698 S. Middle Creek Dr.
 Washington, UT 84780



56'x70'

2594 ft.²



*Prices, estimated completion dates, elevations, styles, colors, features, and finished homes may vary from the architectural rendering and are subject to change without notice or obligation. Square footage is estimated. [Scan, Download & Register for free in the NoviHome App for more information on all our homes and neighborhoods.](#)



Agent: Lori Johansson
 (435)669-8618 - lori@ssrealtysolutions.com

