

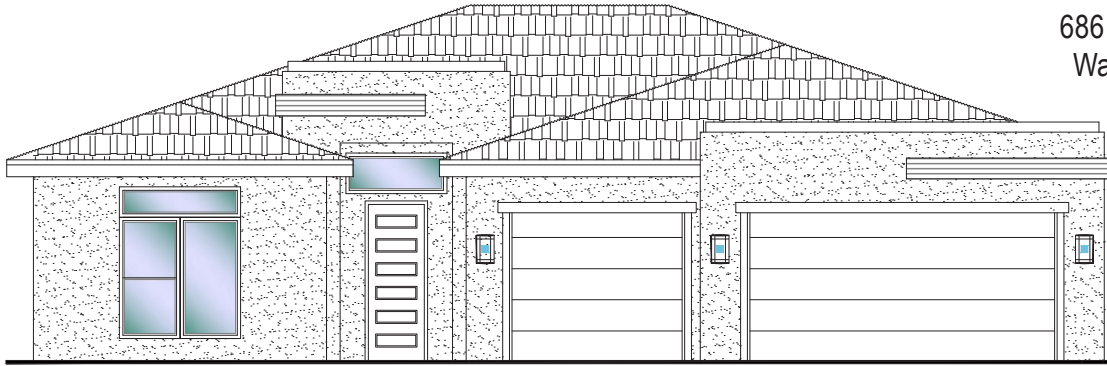


**#86 - FOR SALE\***  
 3 Bed | 2 Bath | 3 Car Garage

**S&S Homes**

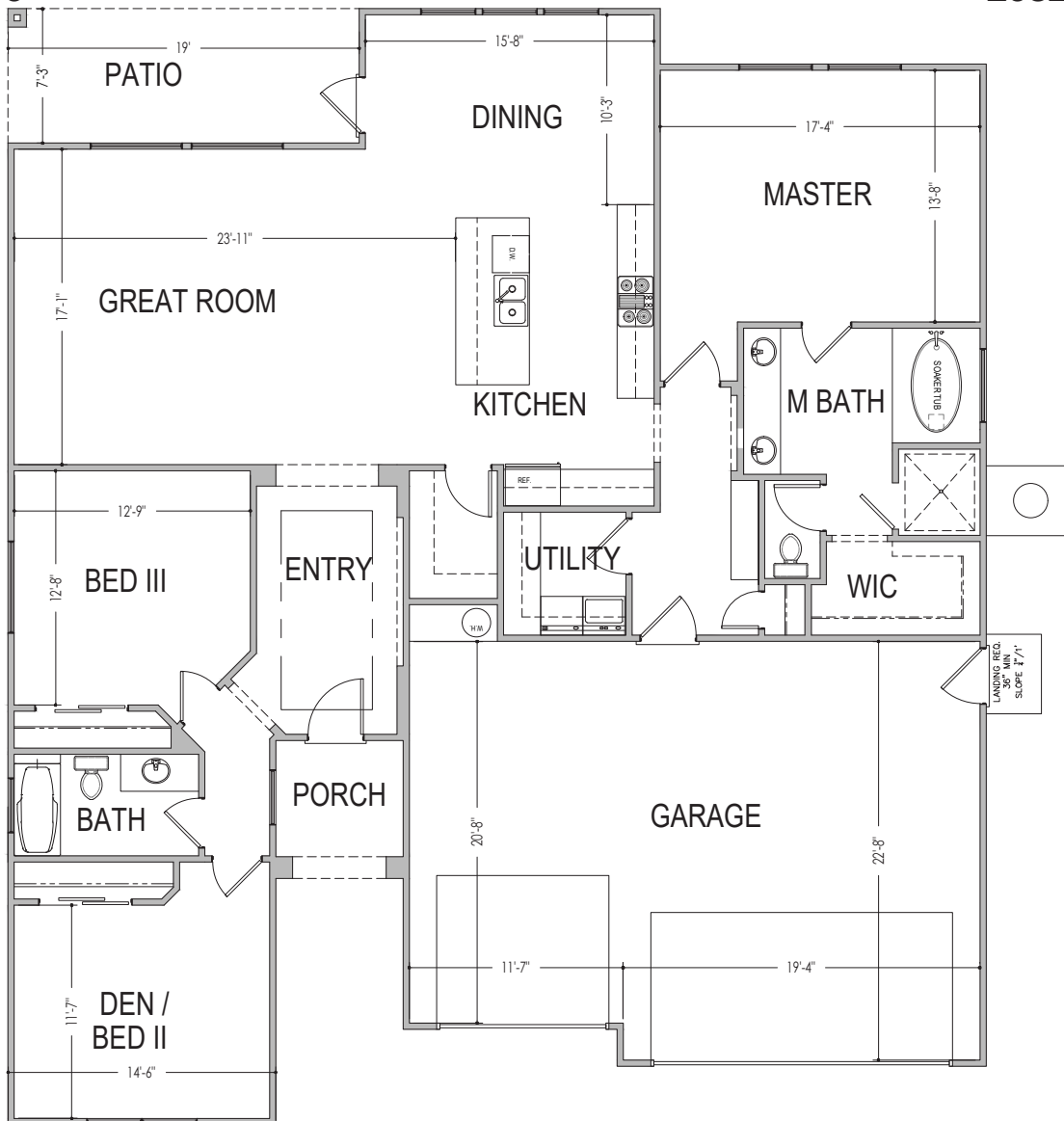
www.sshomes.info

686 S. Middle Creek Dr.  
 Washington, UT 84780



53'x60'

2032 ft.<sup>2</sup>



\*Prices, estimated completion dates, elevations, styles, colors, features, and finished homes may vary from the architectural rendering and are subject to change without notice or obligation. Square footage is estimated. Scan, Download & Register for free in the NoviHome App for more information on all our homes and neighborhoods.



**Agent: Lori Johansson**  
 (435)669-8618 - lori@ssrealtysolutions.com



MULTIPLE LISTING SERVICE  
**MLS**



**S&S Realty**  
 SOLUTIONS