

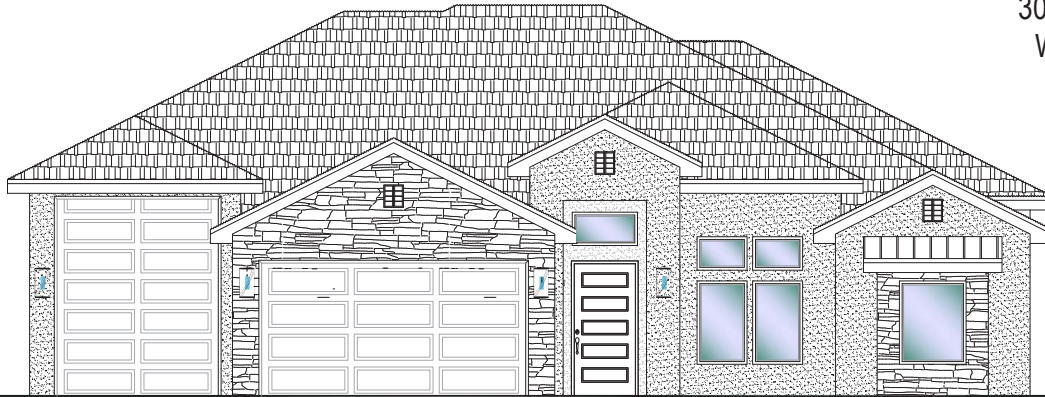


#25 - FOR SALE*
 3 Bed | 2.5 Bath | 3 Car-RV Garage

S&S Homes

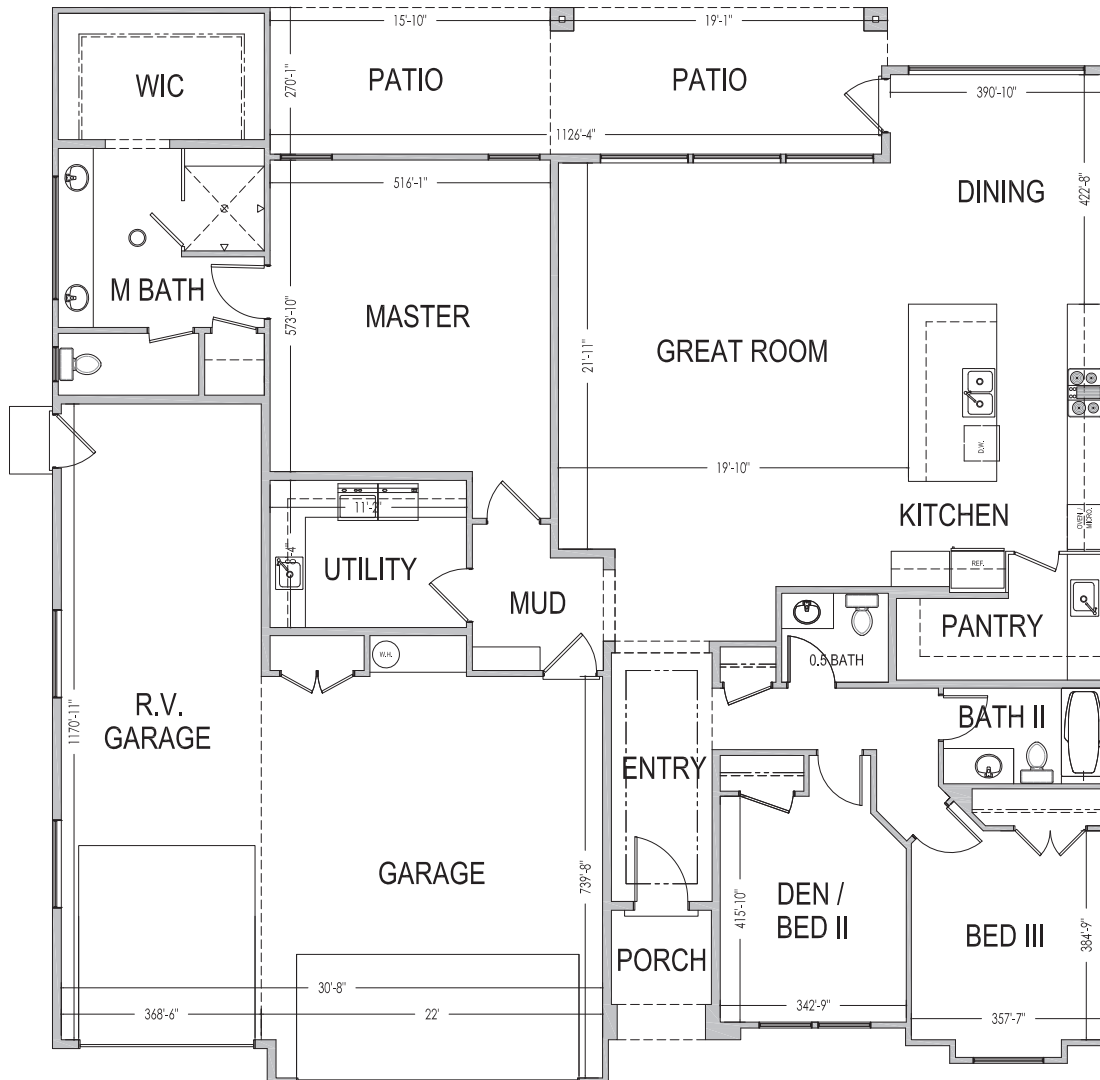
www.sshomes.info

3028 E. Smith Creek Dr.
 Washington, UT 84780



60'x61'

2,286 ft.²



*Prices, estimated completion dates, elevations, styles, colors, features, and finished homes may vary from the architectural rendering and are subject to change without notice or obligation. Square footage is estimated. Scan, Download & Register for free in the NoviHome App for more information on all our homes and neighborhoods.



Agent: Lori Johansson
 (435)669-8618 - lori@ssrealtysolutions.com



MULTIPLE LISTING SERVICE
MLS



S&S Realty
 SOLUTIONS