

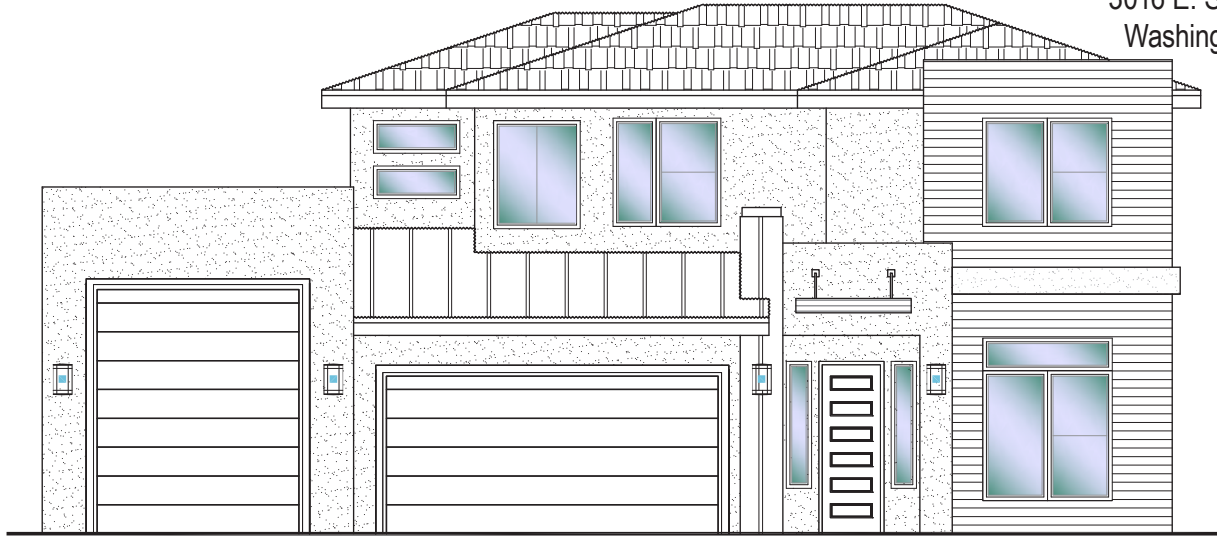


**#24 - FOR SALE\***  
 4 Bed+Office | 2.5 Bath | 3 Car-Boat Garage



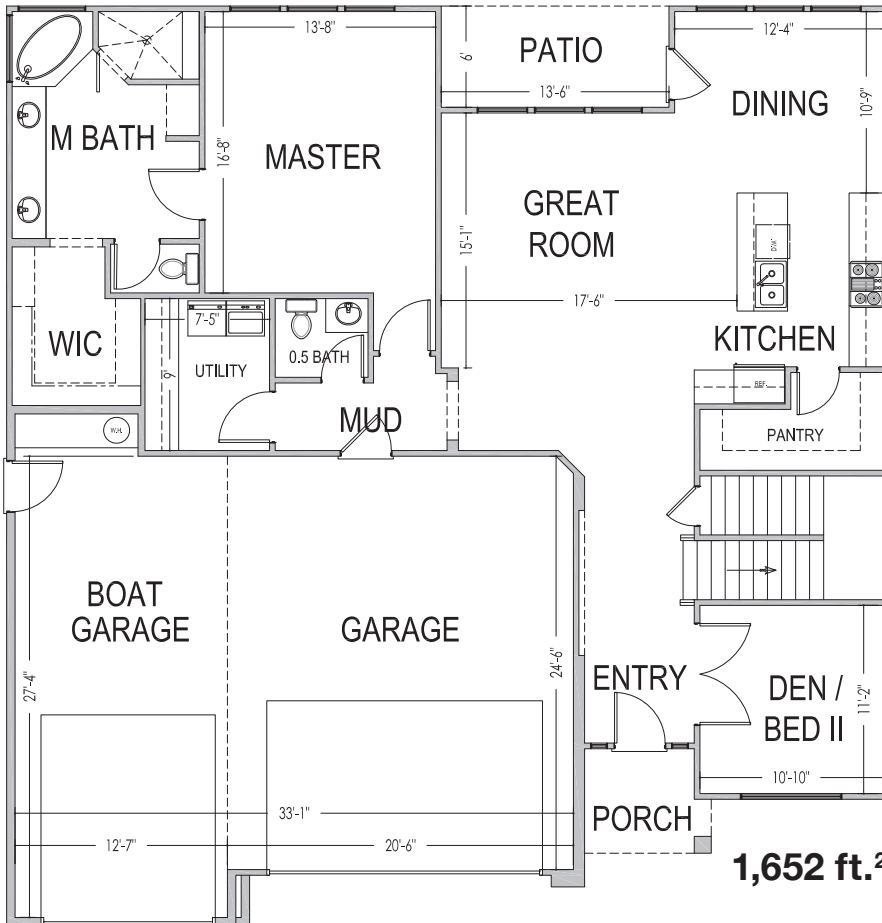
www.sshomes.info

3016 E. Smith Creek Dr.  
 Washington, UT 84780

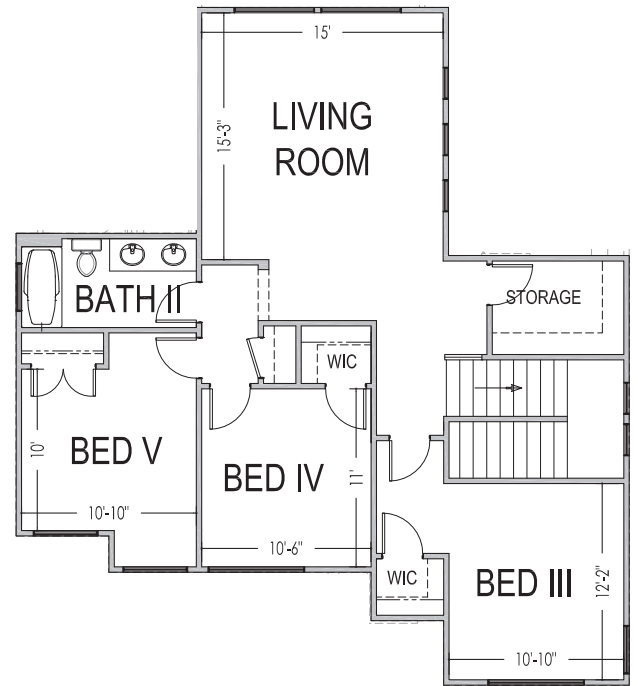


52'x54'

2,725 ft.<sup>2</sup>



1,652 ft.<sup>2</sup>



1,073 ft.<sup>2</sup>

\*Prices, estimated completion dates, elevations, styles, colors, features, and finished homes may vary from the architectural rendering and are subject to change without notice or obligation. Square footage is estimated. Scan, Download & Register for free in the NoviHome App for more information on all our homes and neighborhoods.



Agent: **Lori Johansson**  
 (435)669-8618 - lori@ssrealtysolutions.com

