

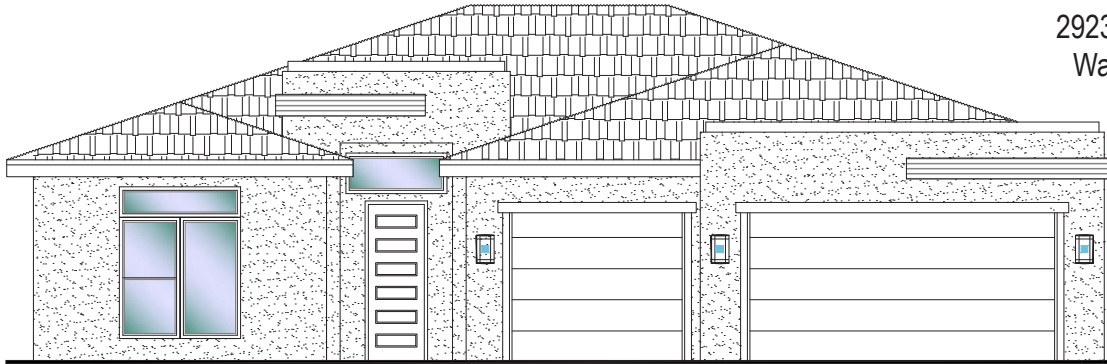


#108 - FOR SALE*
 3 Bed | 2 Bath | 3 Car Garage

S&S Homes

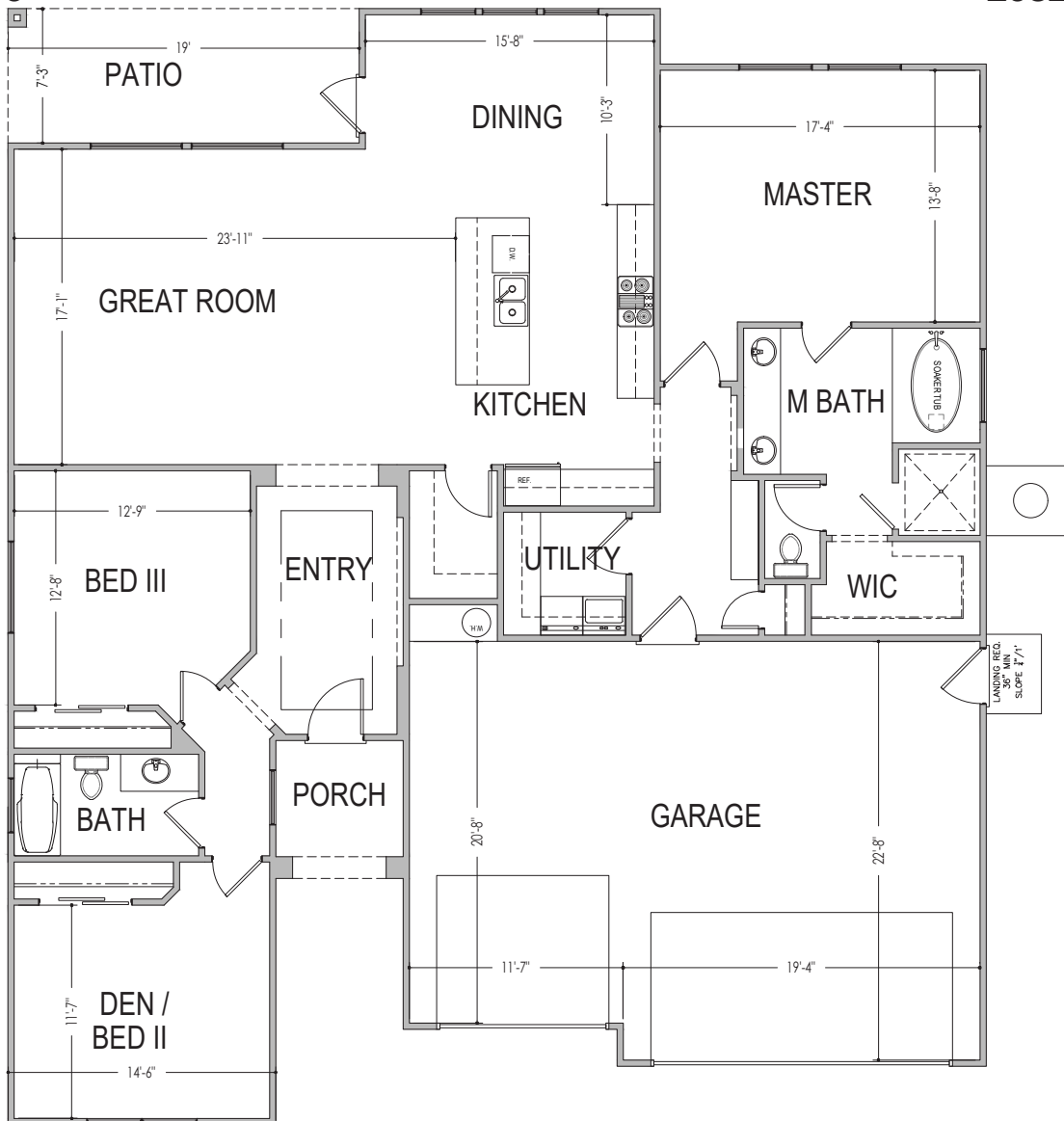
www.sshomes.info

2923 E. Smith Creek Dr.
 Washington, UT 84780



53'x60'

2032 ft.²



*Prices, estimated completion dates, elevations, styles, colors, features, and finished homes may vary from the architectural rendering and are subject to change without notice or obligation. Square footage is estimated. [Scan, Download & Register for free in the NoviHome App for more information on all our homes and neighborhoods.](#)



Agent: Lori Johansson
 (435)669-8618 - lori@ssrealtysolutions.com



MULTIPLE LISTING SERVICE
MLS



S&S Realty
 SOLUTIONS