



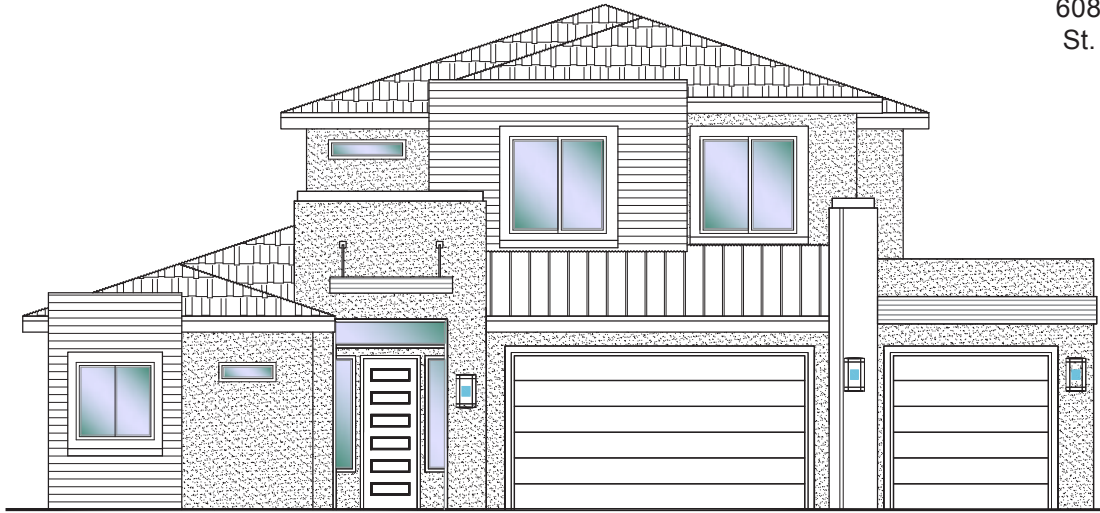
**DESERT  
CLIFFS**

**#325 - FOR SALE\***  
5 Bed | 4 Bath | 3 Car Garage

**S&S Homes**

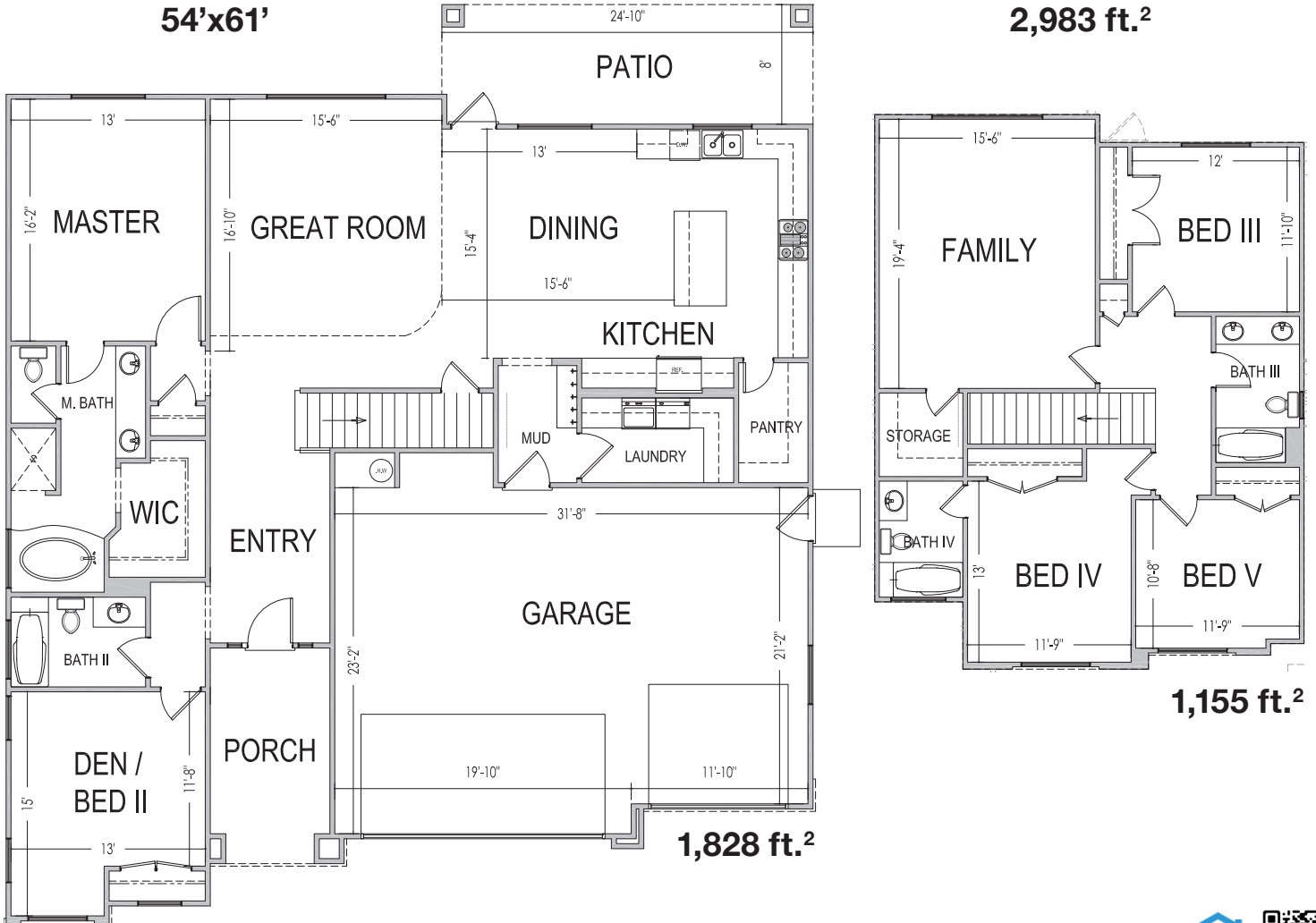
www.sshomes.info

6083 S. Half Dome Dr.  
St. George, UT 84790



**54'x61'**

**2,983 ft.<sup>2</sup>**



**1,828 ft.<sup>2</sup>**

**1,155 ft.<sup>2</sup>**

\*Prices, estimated completion dates, elevations, styles, colors, features, and finished names may vary from the architectural rendering and are subject to change without notice or obligation. Square footage is estimated. [Scan, Download & Register for free in the NoviHome App for more information on all our homes and neighborhoods.](#)



**Agent: Shae Leonard**  
(435)668-3096 - shae@ssrealtysolutions.com



MULTIPLE LISTING SERVICE  
**MLS**



**S&S Realty**  
SOLUTIONS