



**DESERT
CLIFFS**

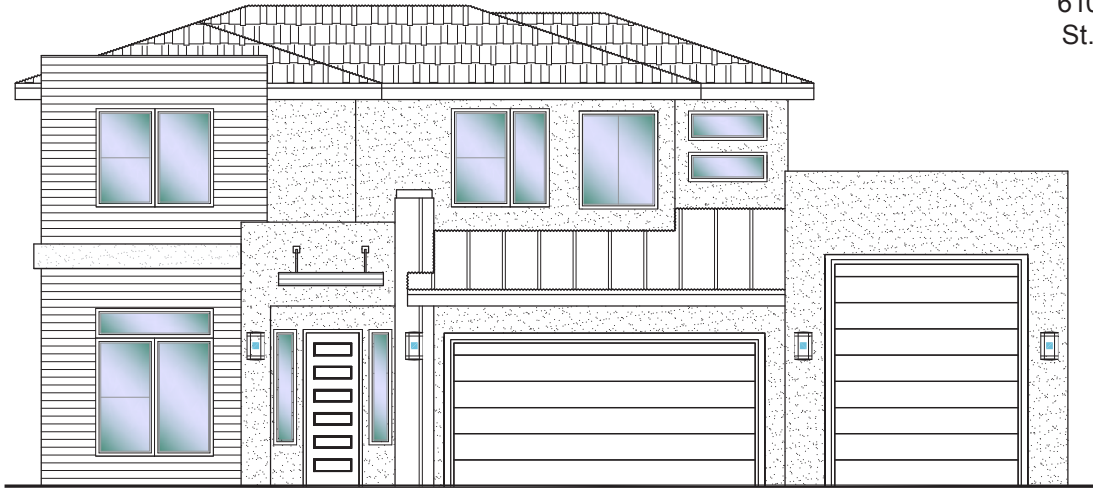
#324 - FOR SALE*

4 Bed+Office | 2.5 Bath | 3 Car-Boat Garage

S&S Homes

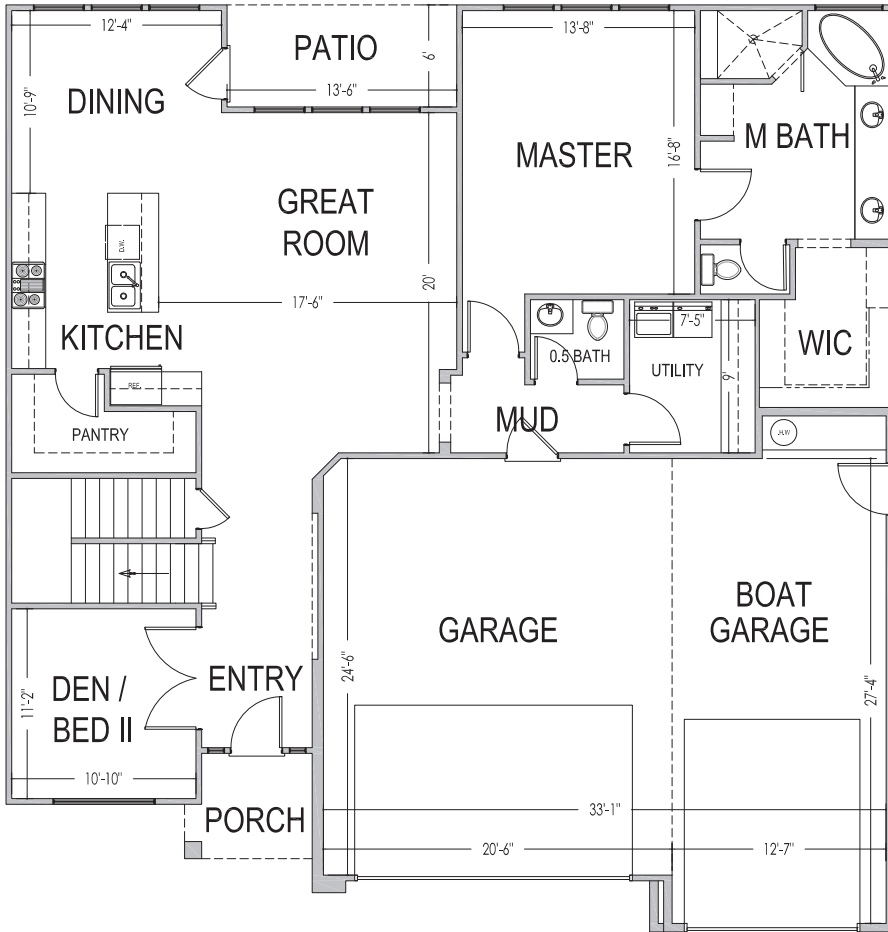
www.sshomes.info

6103 S. Half Dome Dr.
St. George, UT 84790

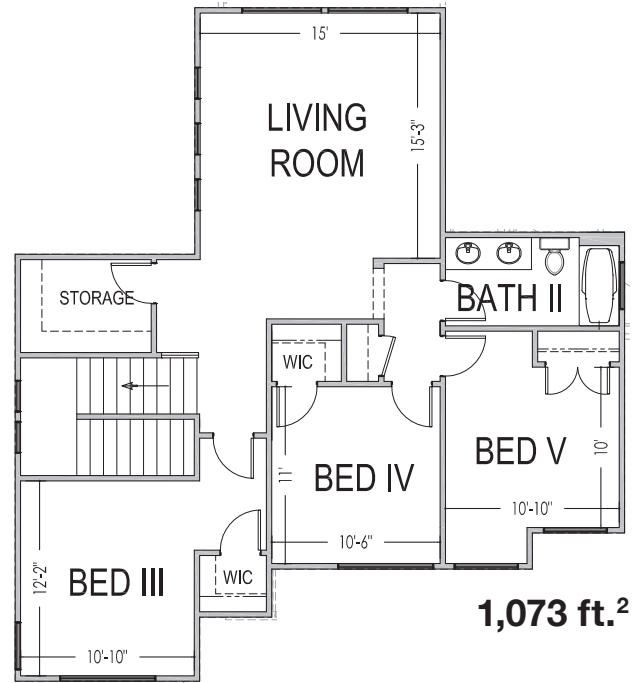


52'x54'

2,725 ft.²



1,652 ft.²



1,073 ft.²

*Prices, estimated completion dates, elevations, styles, colors, features, and finished homes may vary from the architectural rendering and are subject to change without notice or obligation. Square footage is estimated. Scan, Download & Register for free in the NoviHome App for more information on all our homes and neighborhoods.



Agent: Shae Leonard
(435)668-3096 - shae@ssrealtysolutions.com



MULTIPLE LISTING SERVICE
MLS



S&S Realty
SOLUTIONS