



**DESERT
CLIFFS**

#323 - FOR SALE*
3 Bed | 2.5 Bath | 3 Car Garage

S&S Homes

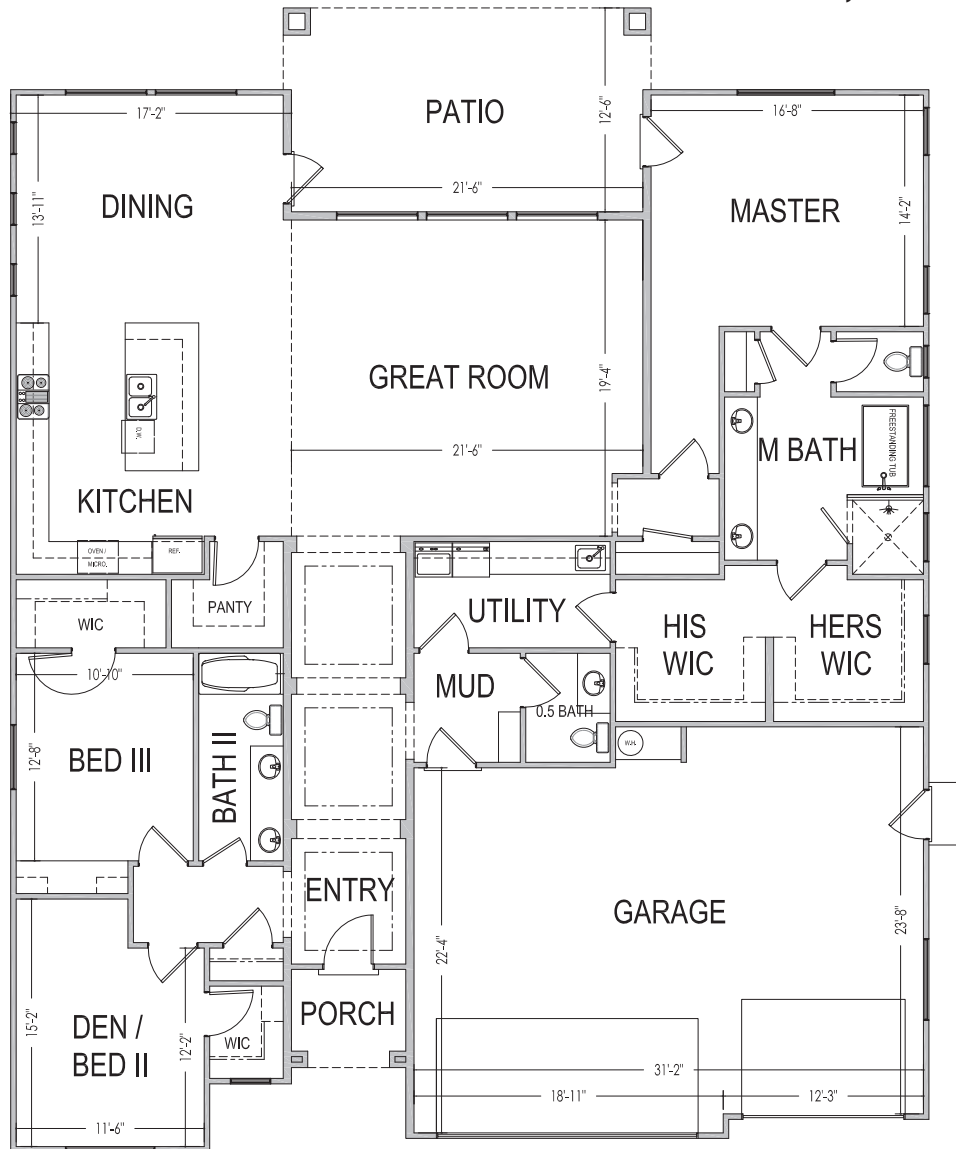
www.sshomes.info

6103 S. Half Dome Ln.
St. George, UT 84790



56'x70'

2,594 ft.²



*Prices, estimated completion dates, elevations, styles, colors, features, and finished homes may vary from the architectural rendering and are subject to change without notice or obligation. Square footage is estimated. [Scan, Download & Register for free in the NoviHome App for more information on all our homes and neighborhoods.](#)



Agent: Shae Leonard
(435)668-3096 - shae@ssrealtysolutions.com



MULTIPLE LISTING SERVICE
MLS



S&S Realty
SOLUTIONS