



**DESERT
CLIFFS**

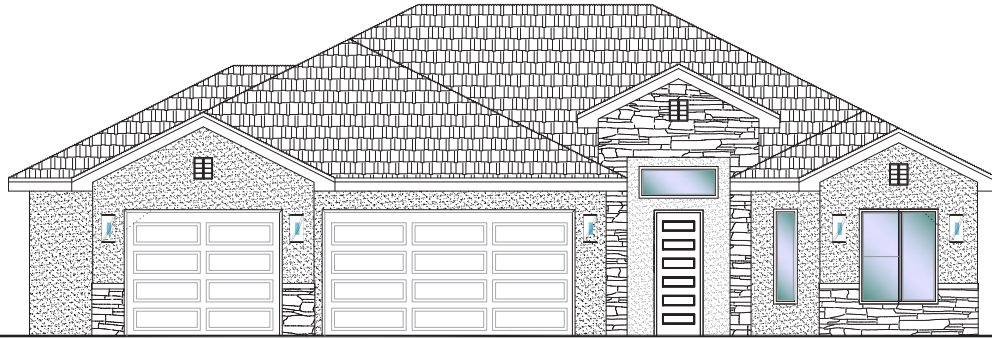
#301 - FOR SALE*

3 Bed+Full Casita | 3 Bath | 3 Car Garage

S&S Homes

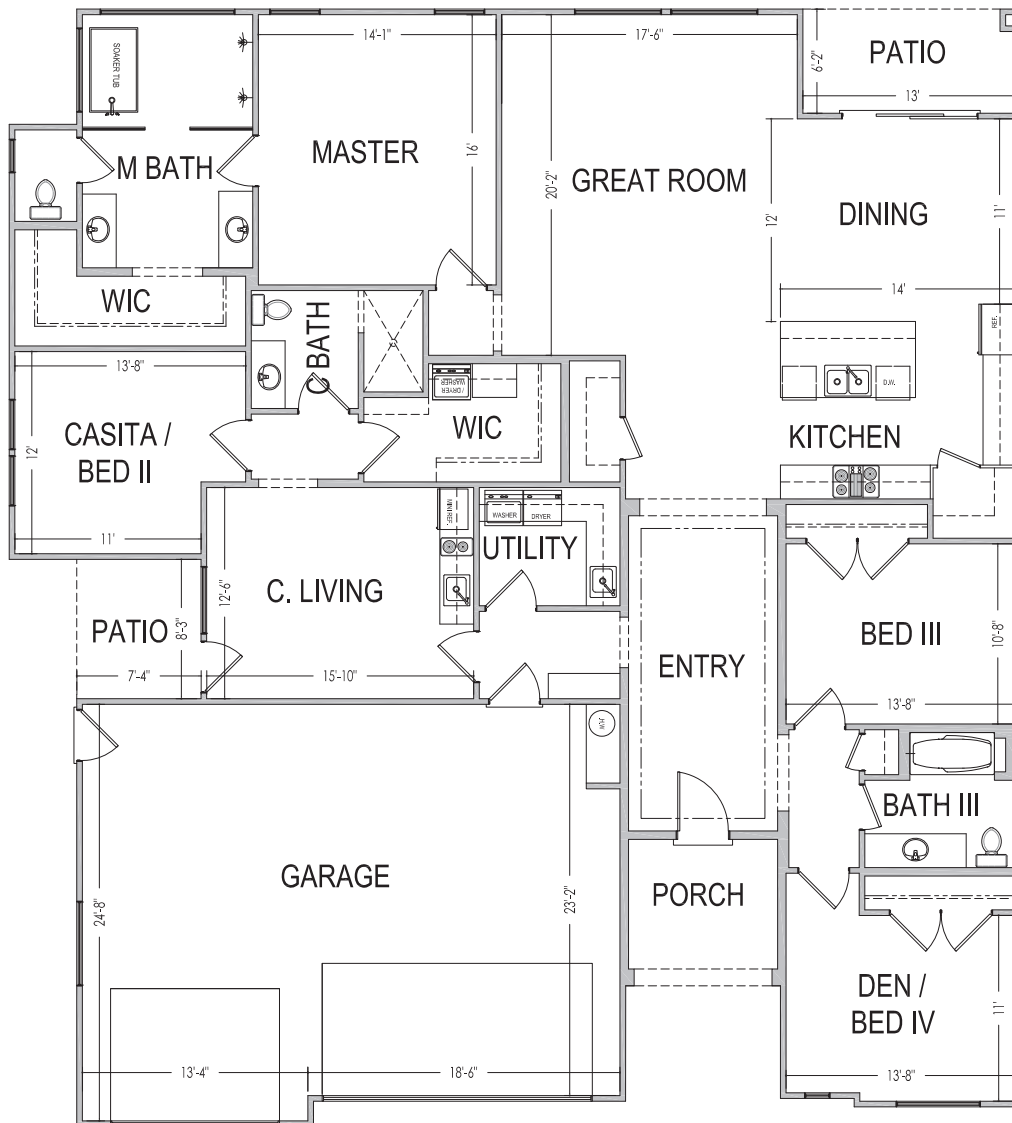
www.sshomes.info

6102 S. Half Dome Dr.
St. George, UT 84790



60'x66'

2,648 ft.²



*Prices, estimated completion dates, elevations, styles, colors, features, and finished homes may vary from the architectural rendering and are subject to change without notice or obligation. Square footage is estimated. [Scan, Download & Register for free in the NoviHome App for more information on all our homes and neighborhoods.](#)



Agent: Shae Leonard
(435)668-3096 - shae@ssrealtysolutions.com



MULTIPLE LISTING SERVICE
MLS



S&S Realty
SOLUTIONS