

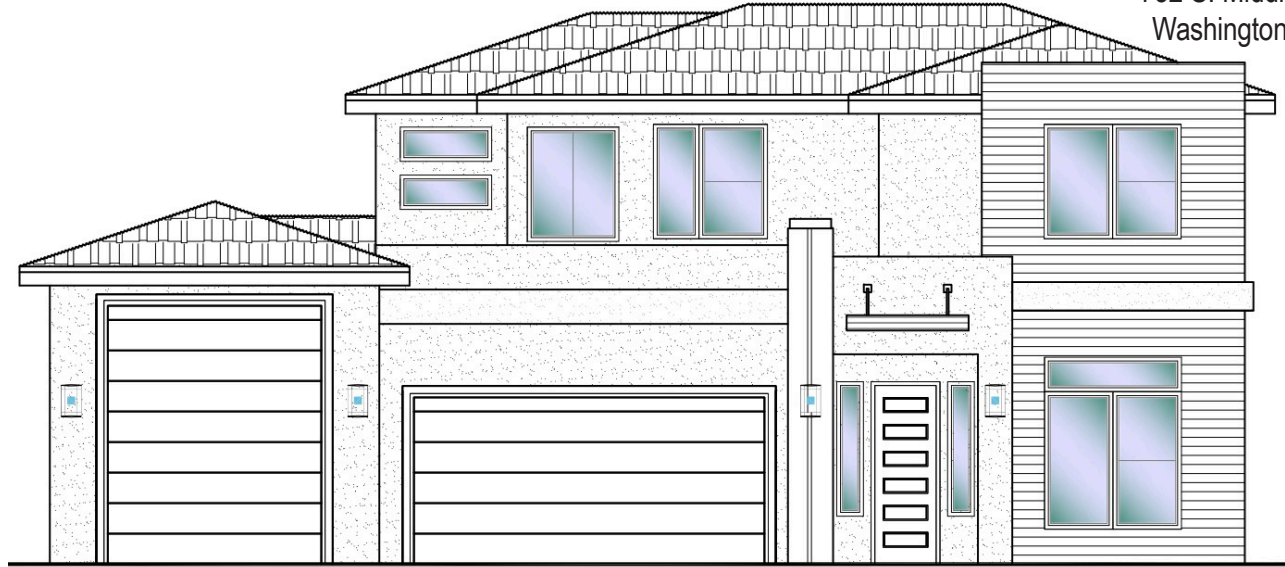


#90 - FOR SALE*
 4 Bed+Office | 2.5 Bath | 3 Car Garage

S&S Homes

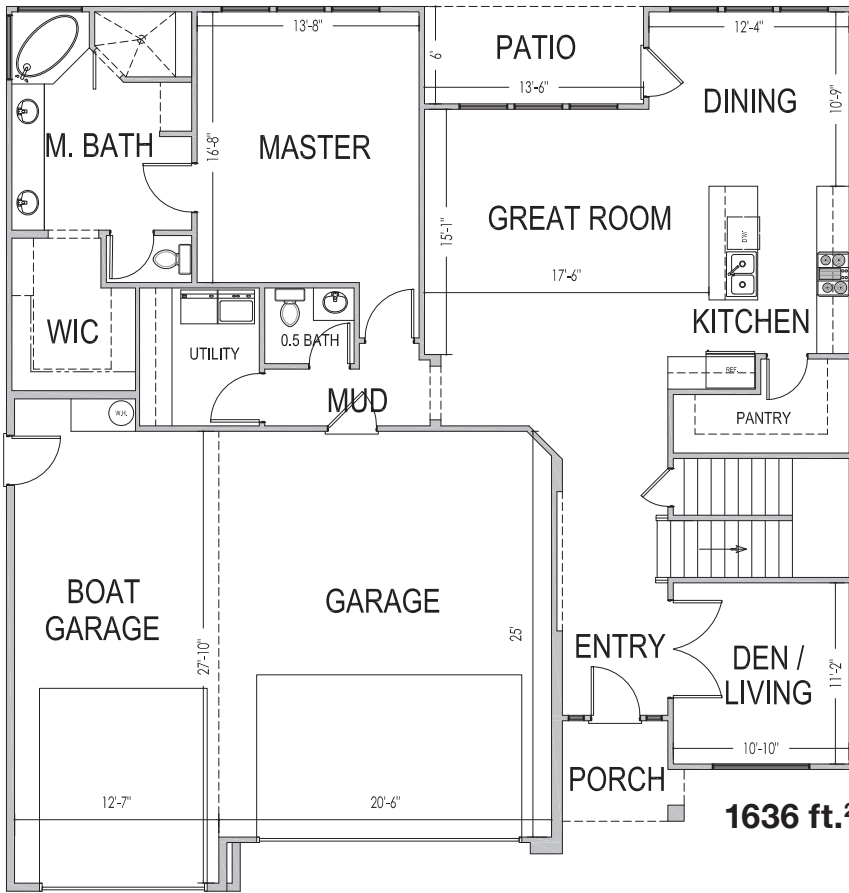
www.sshomes.info

732 S. Middle Creek Dr.
 Washington, UT 84780

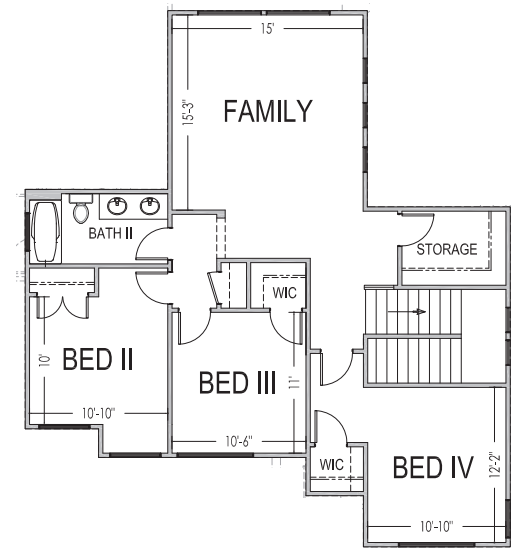


52'x55'

2709 ft.²



1636 ft.²



1073 ft.²

*Prices, estimated completion dates, elevations, styles, colors, features, and finished homes may vary from the architectural rendering and are subject to change without notice or obligation. Square footage is estimated. Scan, Download & Register for free in the NoviHome App for more information on all our homes and neighborhoods.



Agent: Lori Johansson
 (435)669-8618 - lori@ssrealtysolutions.com



MULTIPLE LISTING SERVICE
MLS



S&S Realty
 SOLUTIONS