

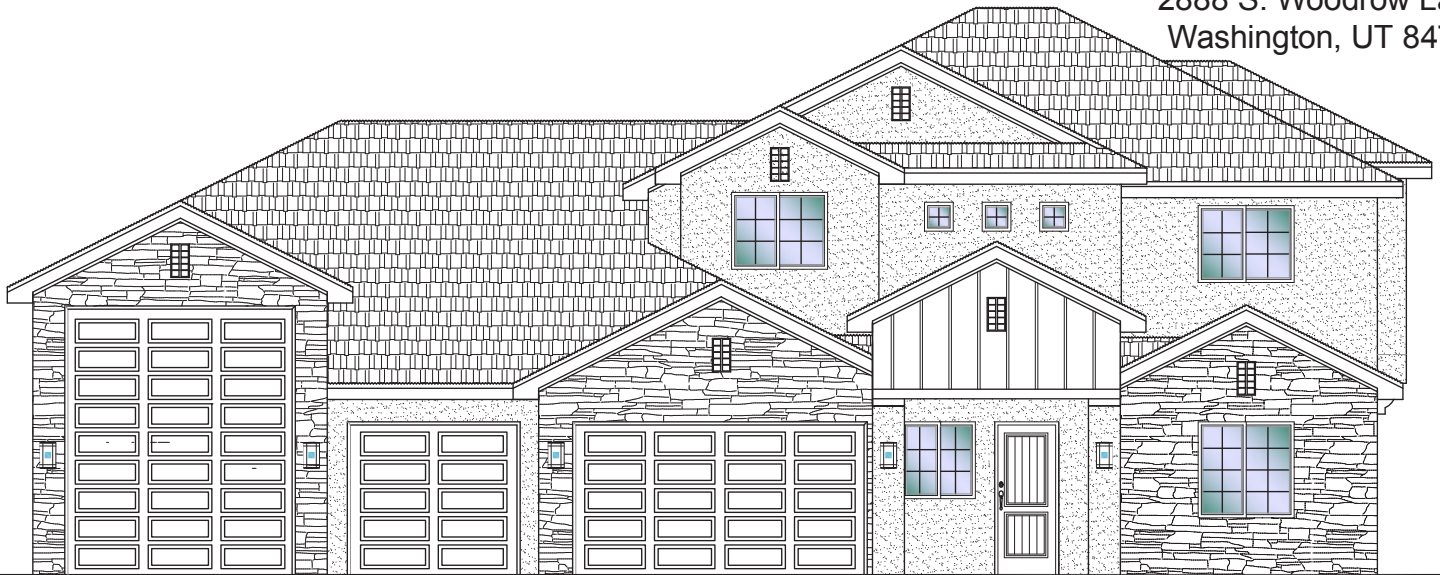


#34 - FOR SALE*
 5 Bed | 4.5 Bath | 2 Gr. Rms. | 3 Car-RV Garage

S&S Homes

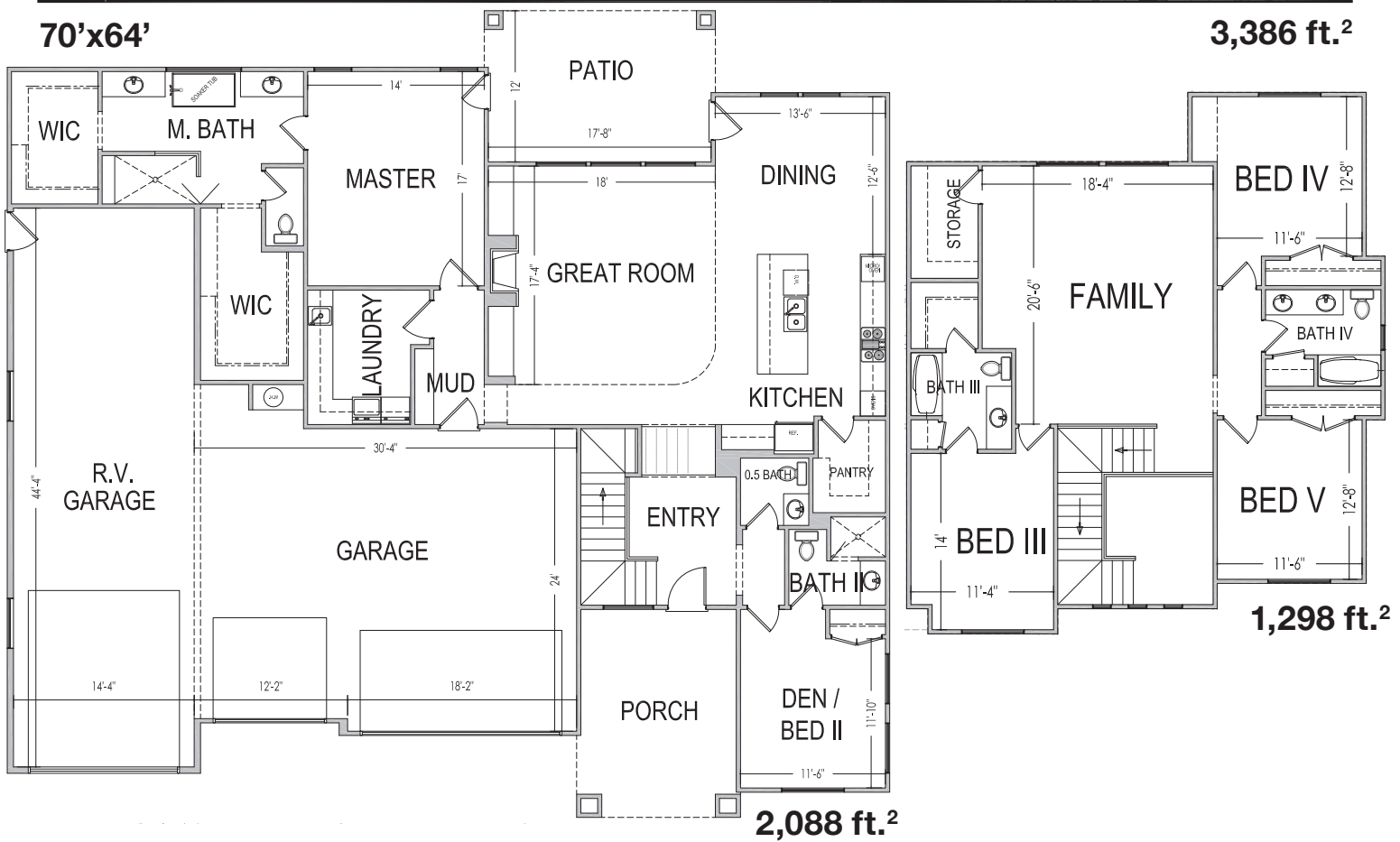
www.sshomes.info

2888 S. Woodrow Lane
 Washington, UT 84780



70'x64'

3,386 ft.²



*Prices, estimated completion dates, elevations, styles, colors, features, and finished homes may vary from the architectural rendering and are subject to change without notice or obligation. Square footage is estimated. Scan, Download & Register for free in the NoviHome App for more information on all our homes and neighborhoods.



Agent: Shae Leonard
 (435)668-3096 - shae@ssrealtysolutions.com



MULTIPLE LISTING SERVICE
MLS



S&S Realty
 SOLUTIONS