

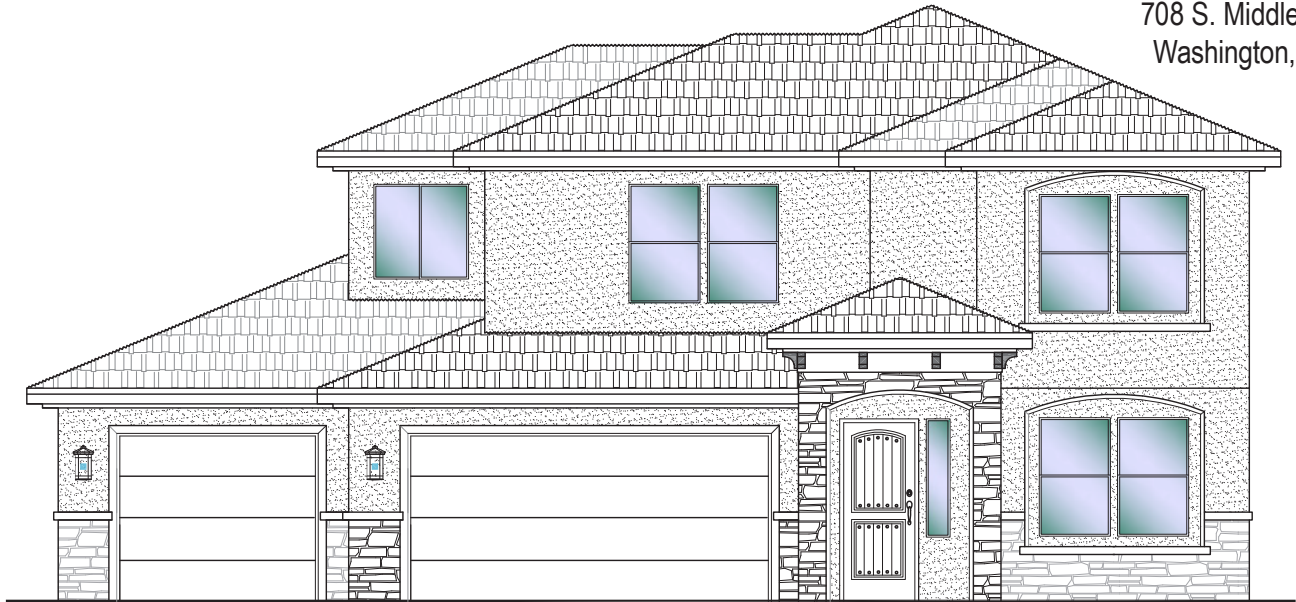


**#88 - FOR SALE\***  
 4 Bed | 2.5 Bath | 3 Car Garage

**S&S Homes**

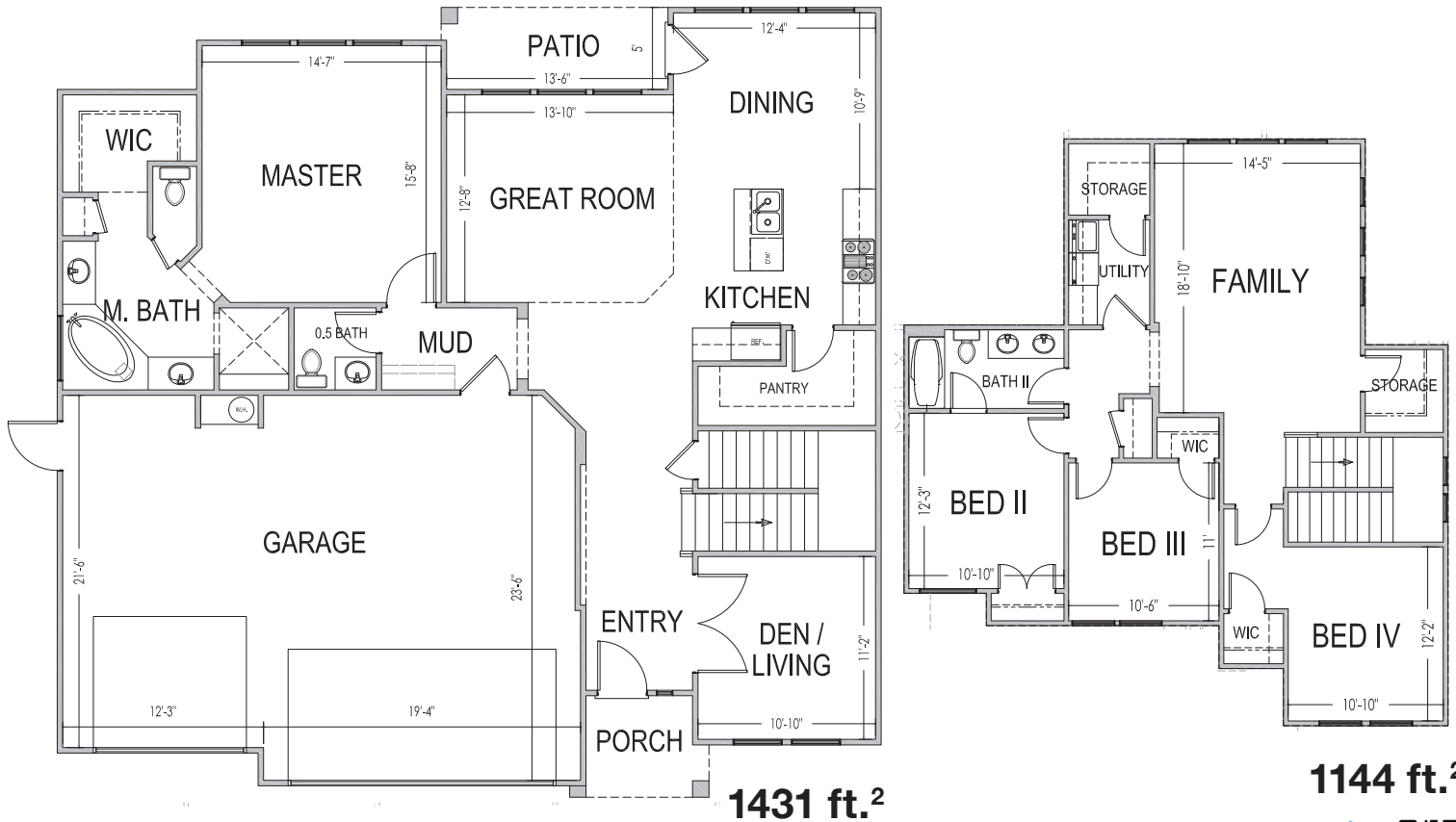
www.sshomes.info

708 S. Middle Creek Dr.  
 Washington, UT 84780



**50'x48'**

**2575 ft.<sup>2</sup>**



\*Prices, estimated completion dates, elevations, styles, colors, features, and finished homes may vary from the architectural rendering and are subject to change without notice or obligation. Square footage is estimated. [Scan, Download & Register for free in the NoviHome App for more information on all our homes and neighborhoods.](#)



**Agent: Lori Johansson**  
 (435)669-8618 - lori@ssrealtysolutions.com



MULTIPLE LISTING SERVICE  
**MLS**



**S&S Realty**  
 SOLUTIONS