

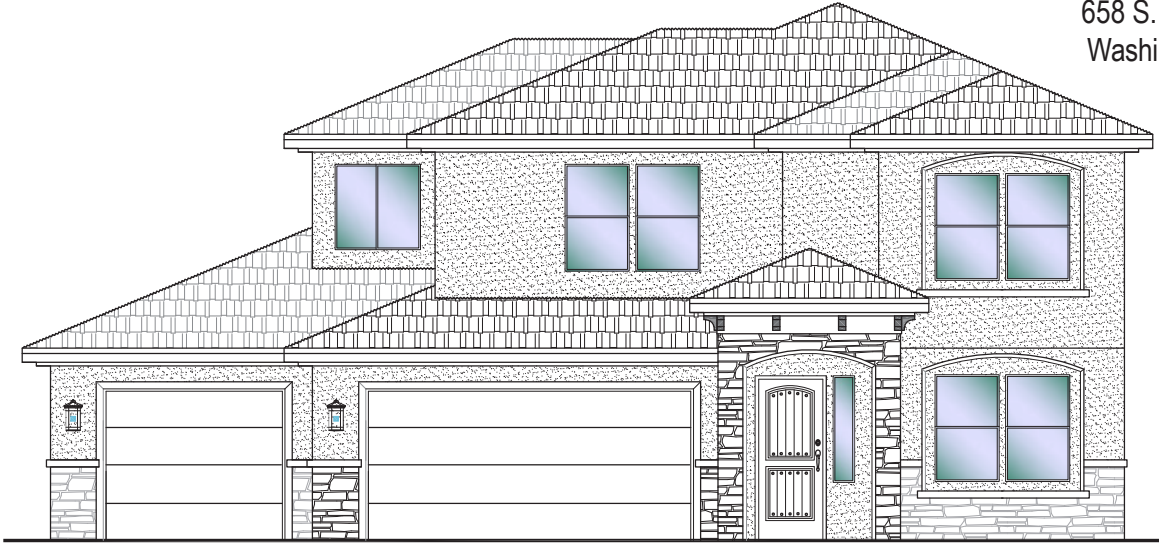


#69 - FOR SALE*
 4 Bed | 2.5 Bath | 3 Car Garage

S&S Homes

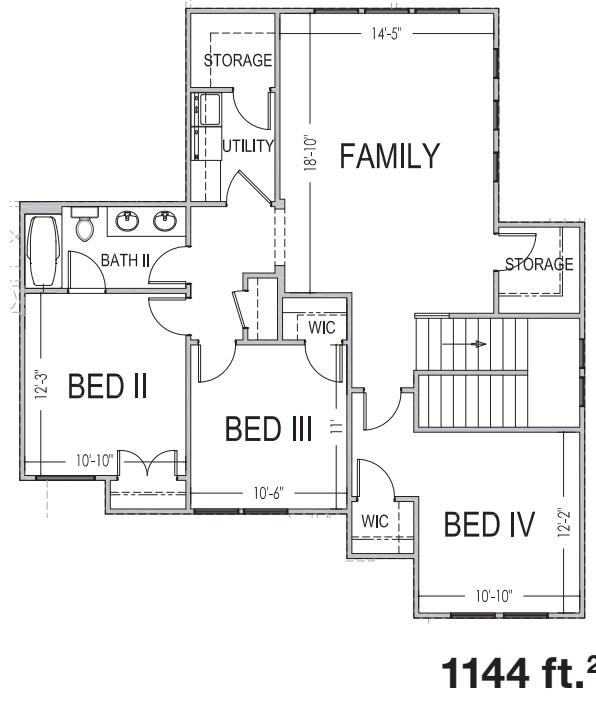
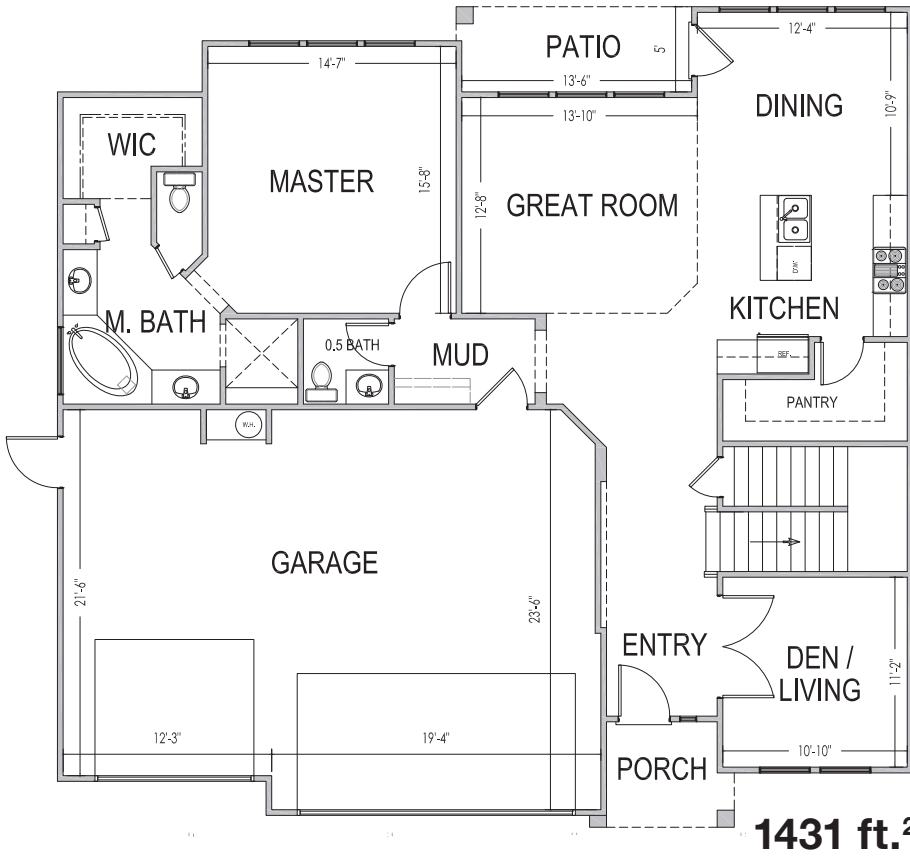
www.sshomes.info

658 S. Taylor Creek Dr.
 Washington, UT 84780



50'x48'

2575 ft.²



*Prices and estimated completion dates are subject to change without notice or obligation. Finished homes may vary from the architectural rendering. Square footage is estimated. [Scan, Download & Register for free in the NoviHome App for more information on all our homes and neighborhoods.](#)



Agent: Lori Johansson
 (435)669-8618 - lori@ssrealtysolutions.com



MULTIPLE LISTING SERVICE
MLS



S&S Realty
 SOLUTIONS