



**DESERT
CLIFFS**

#218 - FOR SALE*
6 Bed | 4 Bath | 3 Car Garage

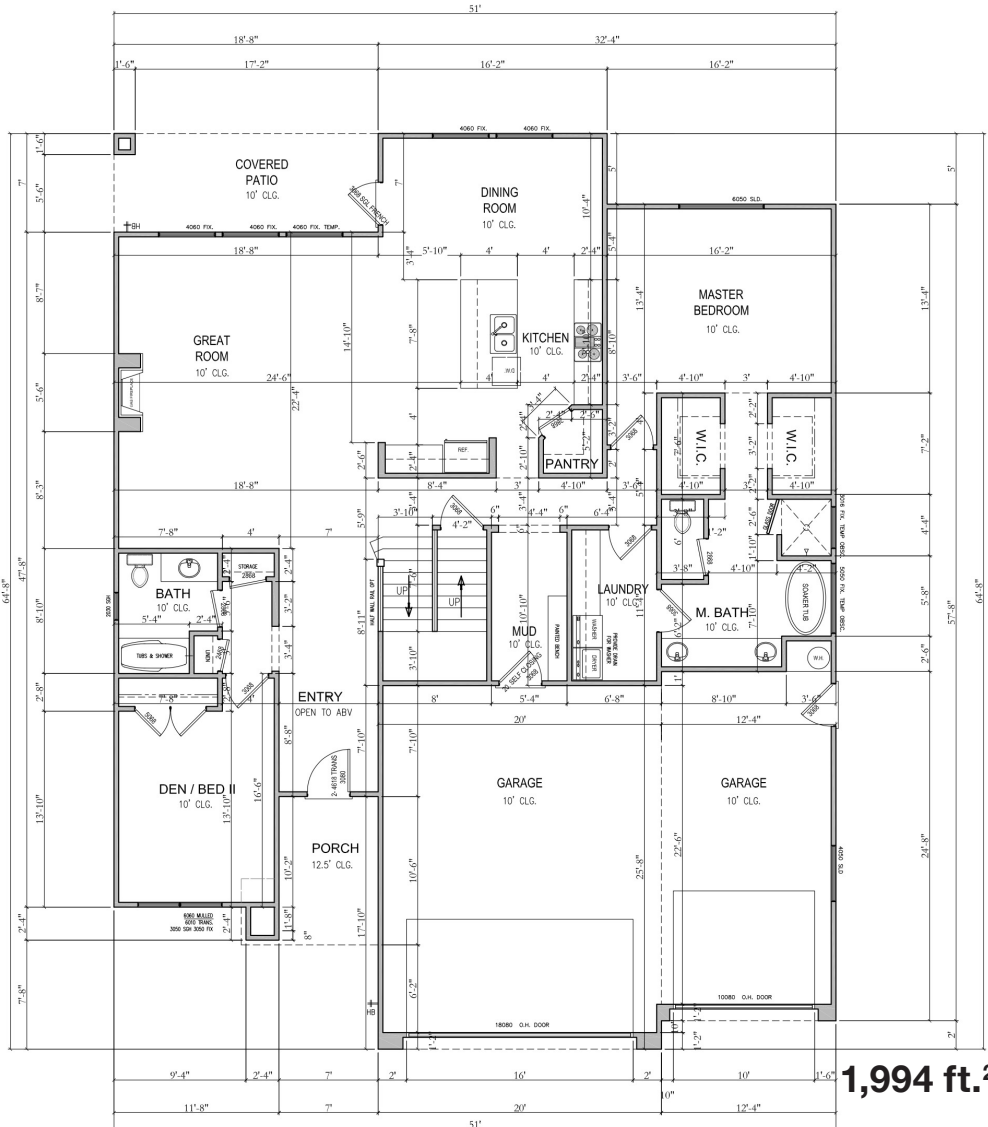
S&S Homes
www.sshomes.info

6049 S. Half Dome Dr.
St. George, UT 84790

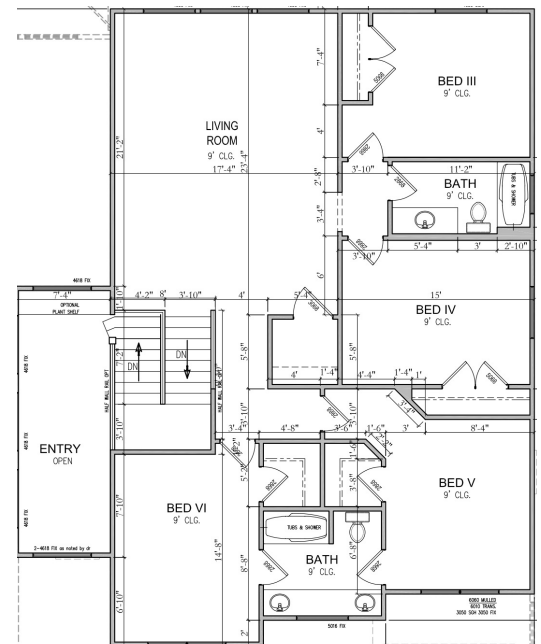


51'x65'

3,504 ft.²



1,994 ft.²



1,510 ft.²

*Prices, estimated completion dates, elevations, styles, colors, features, and finished homes may vary from the architectural rendering and are subject to change without notice or obligation. Square footage is estimated. Scan, Download & Register for free in the NoviHome App for more information on all our homes and neighborhoods.



Agent: Shae Leonard
(435)668-3096 - shae@ssrealtysolutions.com



MULTIPLE LISTING SERVICE
MLS



S&S Realty
SOLUTIONS