



# #29 - (UNDER CONST)\*

3 Bdrm/2 Bath/3 Car Garage

# S&S Homes

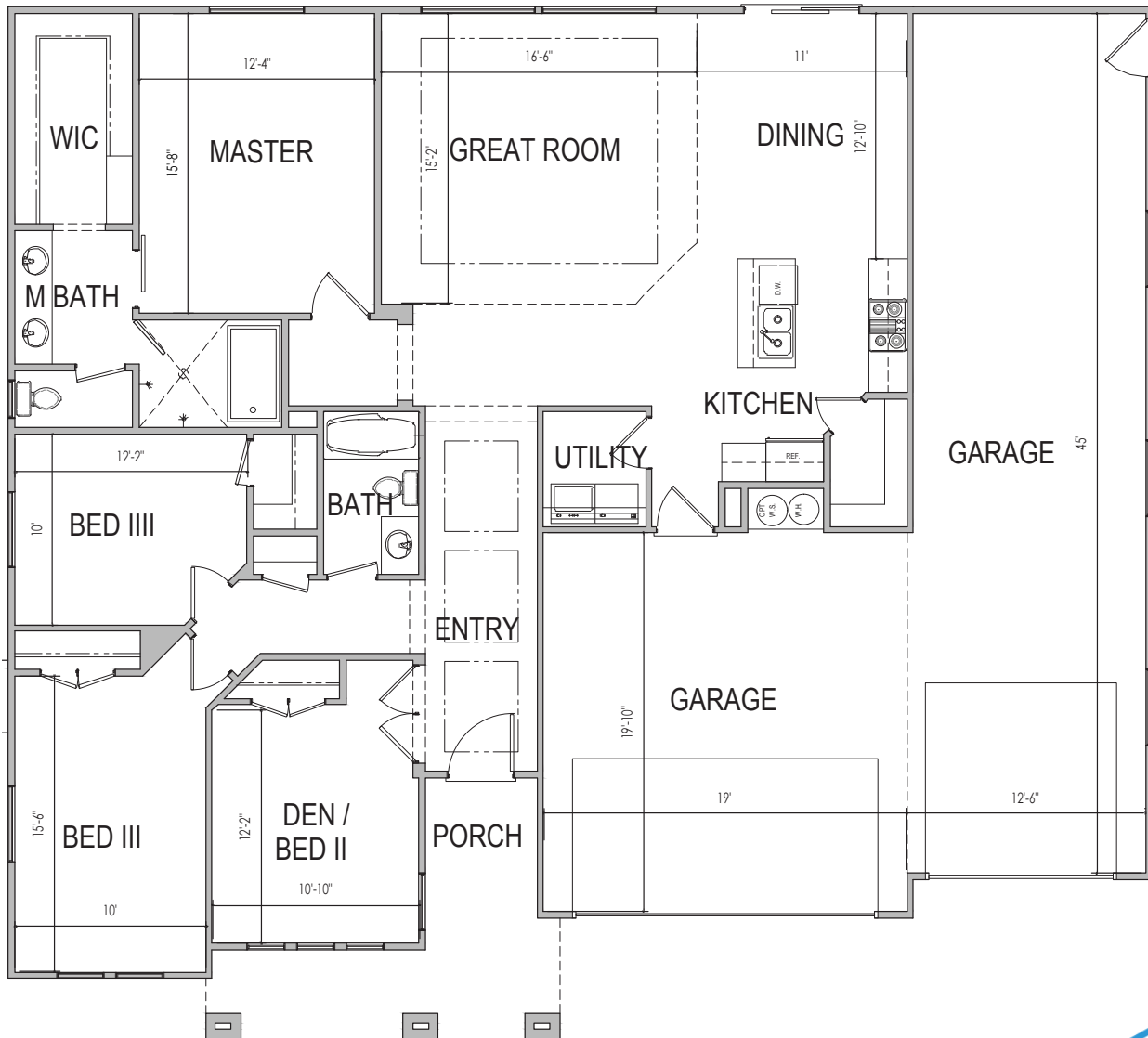
www.sshomes.info

3035 E Beartrap Canyon Dr.  
Washington, UT 84780



60'x54'

1861 ft.<sup>2</sup>



\*Prices and estimated completion dates are subject to change without notice or obligation. Finished homes may vary from the architectural rendering. Square footage is estimated. [Scan, Download & Register for free in the NoviHome App for more information on all our homes and neighborhoods.](#)



**Agent: Lori Johansson**  
(435)669-8618 - [lori@ssrealtysolutions.com](mailto:lori@ssrealtysolutions.com)

