

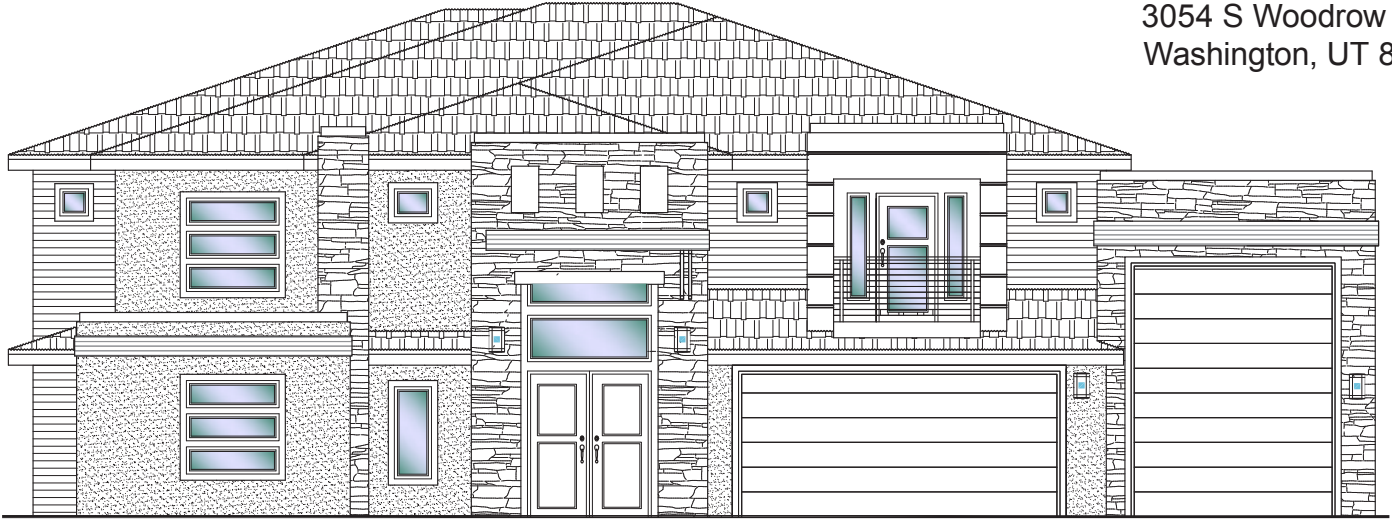


#25 - (UNDER CONST.)*
 6 Bdrm/3.5 Bath/2 Gr. Rms/3 Car-RV Garage

S&S Homes

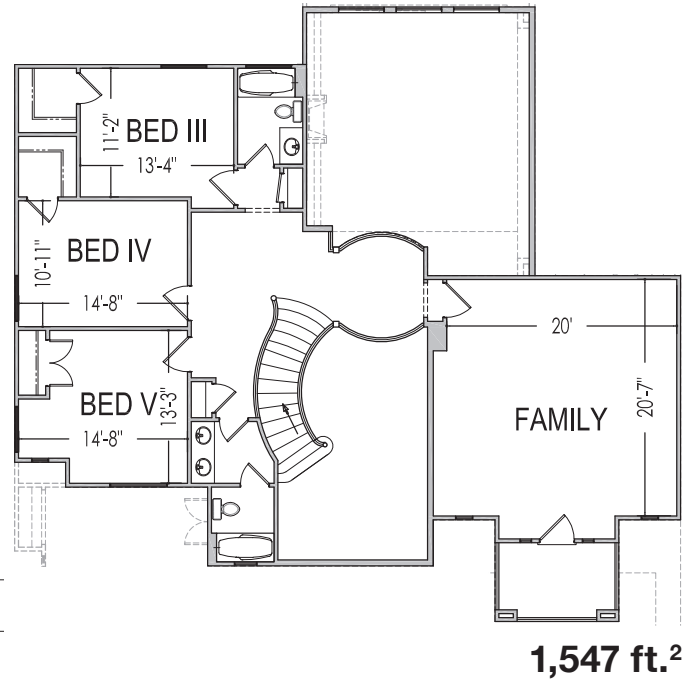
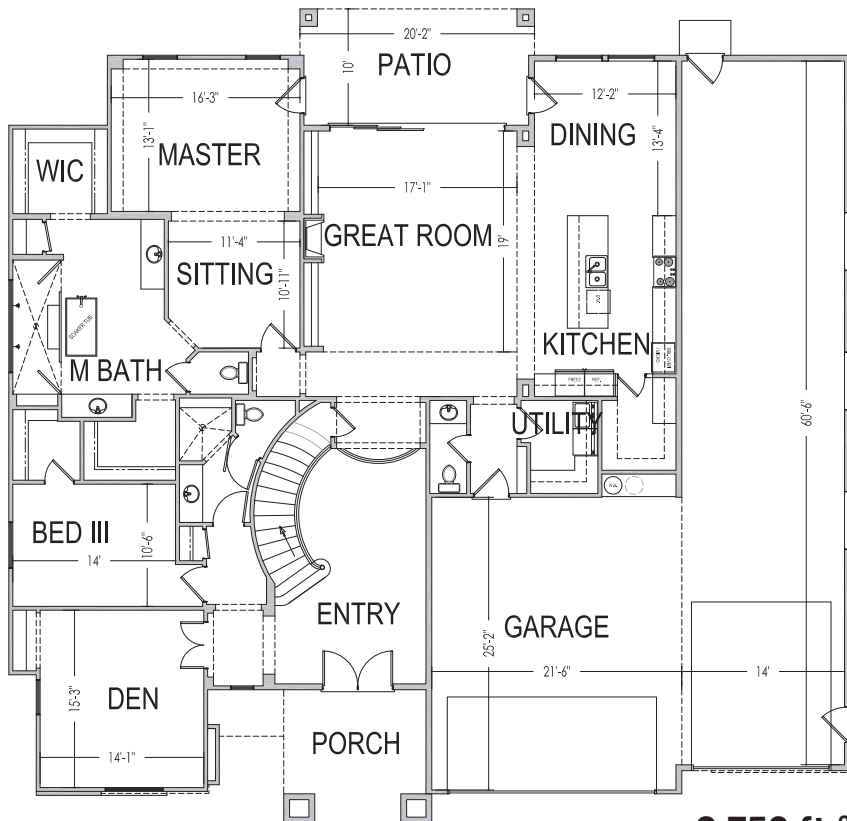
www.sshomes.info

3054 S Woodrow Lane
 Washington, UT 84780



72'x70'

4,300 ft.²



*Prices and estimated completion dates are subject to change without notice or obligation. Finished homes may vary from the architectural rendering. Square footage is estimated. Scan, Download & Register for free in the NoviHome App for more information on all our homes and neighborhoods.



Agent: Shae Leonard
 (435)668-3096 - shae@ssrealtysolutions.com

