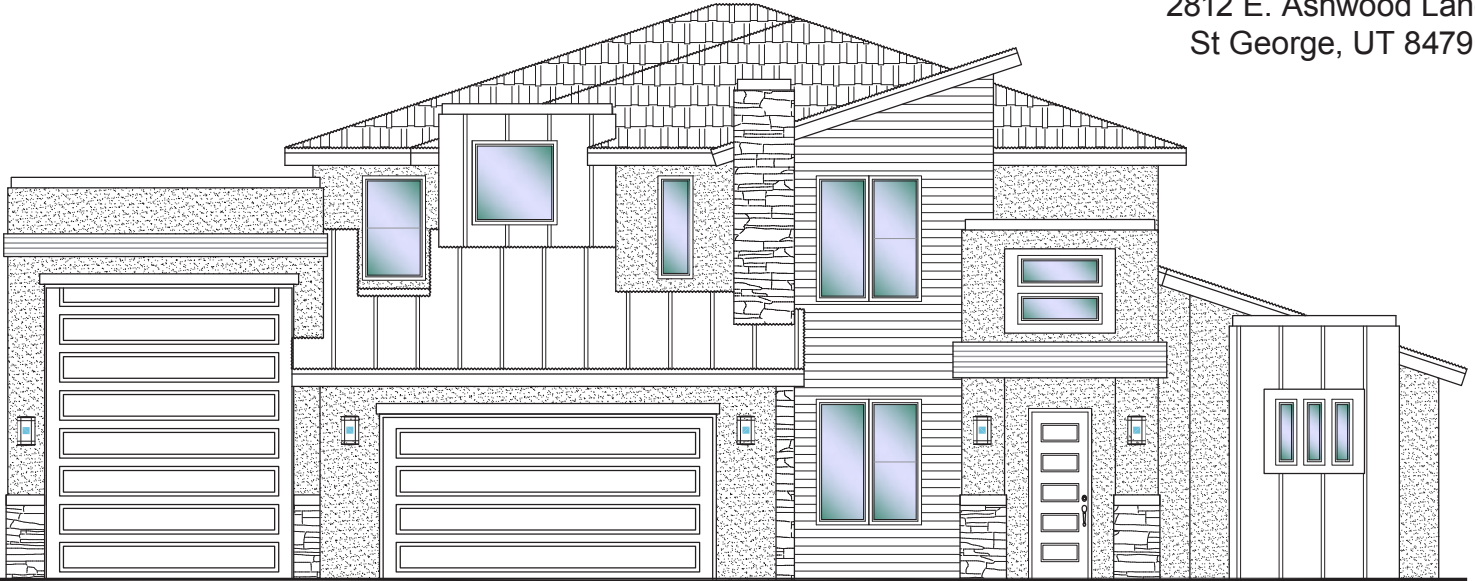
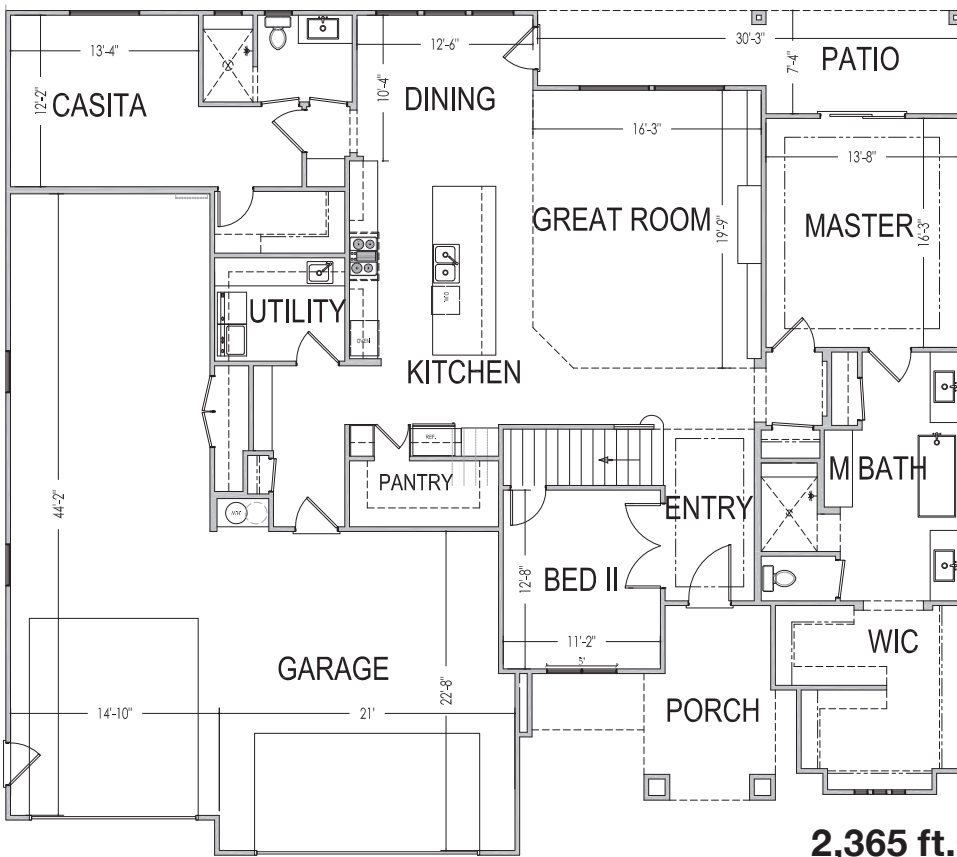


2812 E. Ashwood Lane
St George, UT 84790

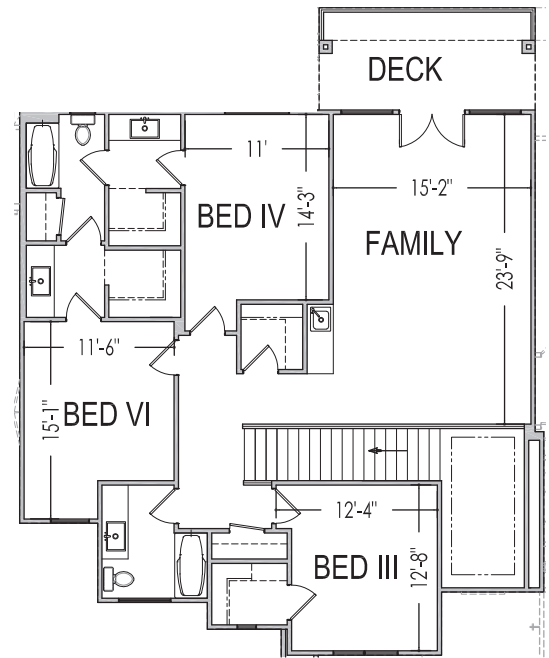


70'x64'

3,790 ft.²



2,365 ft.²



1,420 ft.²

*Prices and estimated completion dates are subject to change without notice or obligation. Finished homes may vary from the architectural rendering. Square footage is estimated. Scan, Download & Register for free in the NoviHome App for more information on all our homes and neighborhoods.



Agent: Shae Leonard
(435)668-3096 - shae@ssrealtysolutions.com

