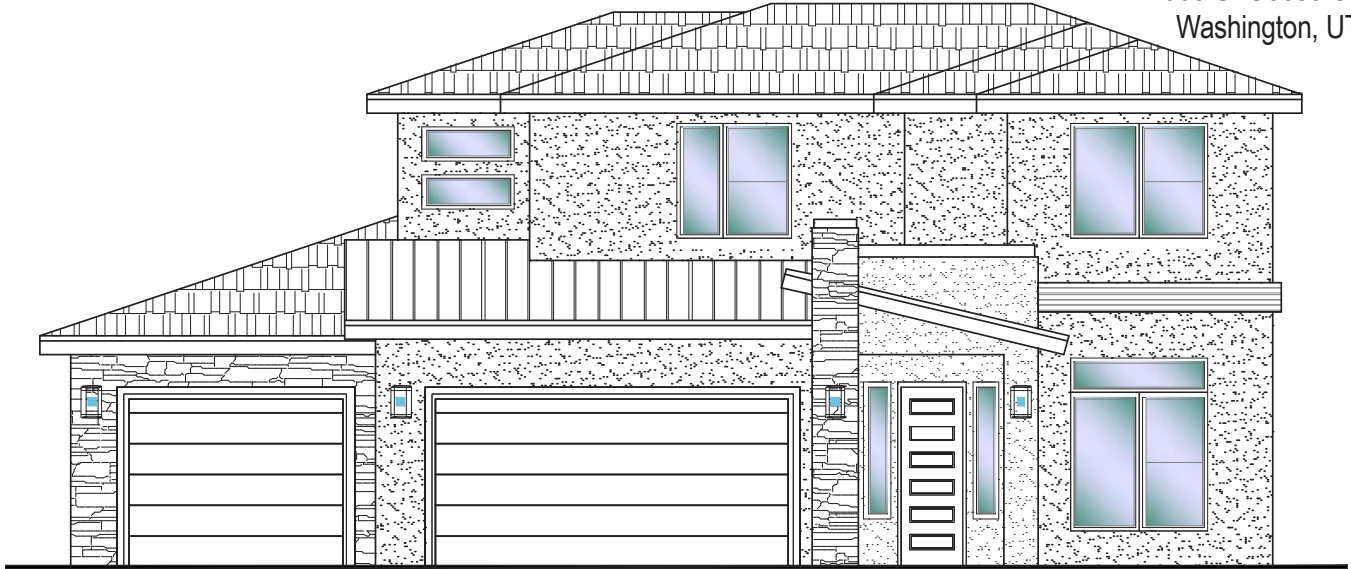




#54 - (UNDER CONST.)*
 4 Bdrm+Den/2.5 Bath/3 Car Garage

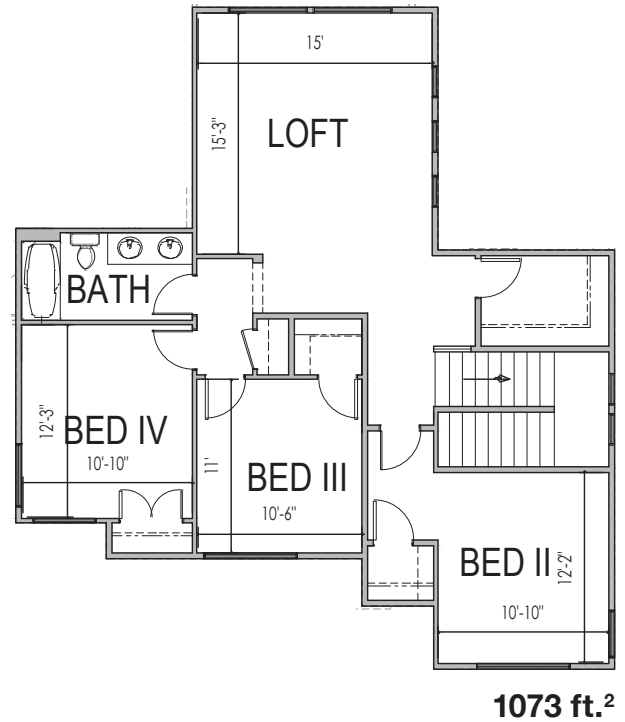
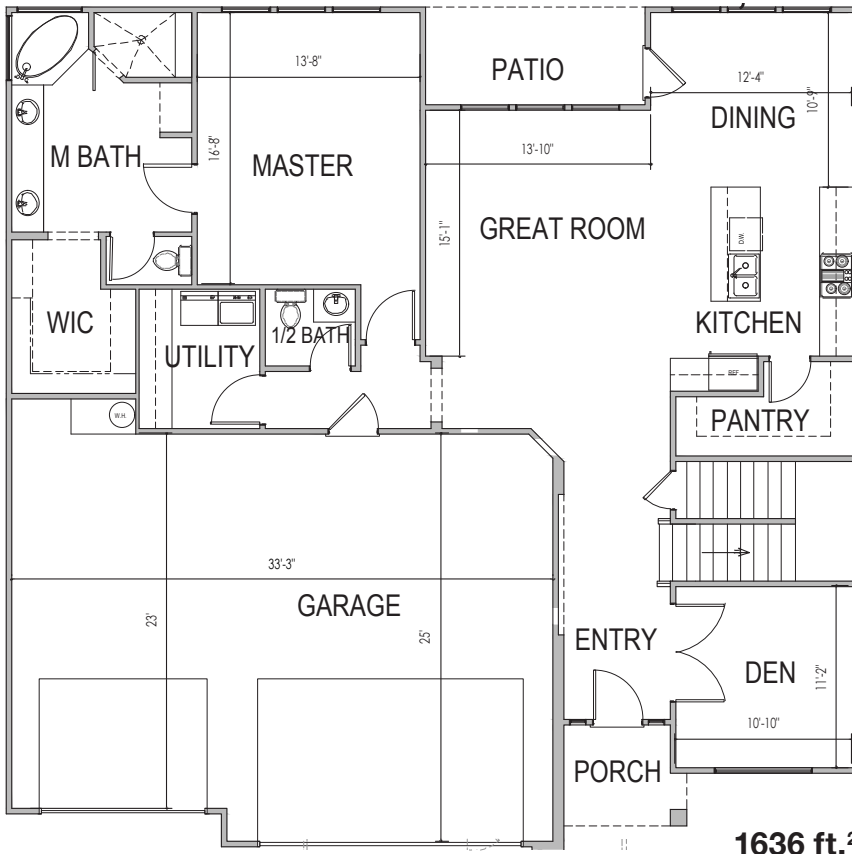
S&S Homes
 www.sshomes.info

668 S. Goose Creek Dr.
 Washington, UT 84780



52'x50'

2709 ft.²



*Prices and estimated completion dates are subject to change without notice or obligation. Finished homes may vary from the architectural rendering. Square footage is estimated. Scan, Download & Register for free in the NoviHome App for more information on all our homes and neighborhoods.



Agent: Lori Johansson
 (435)669-8618 - lori@ssrealtysolutions.com

