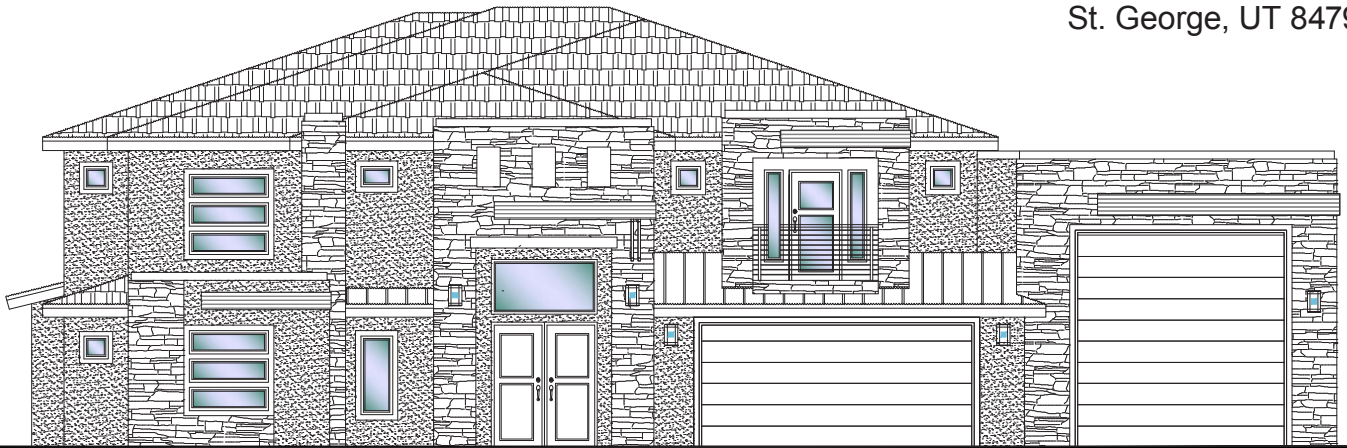
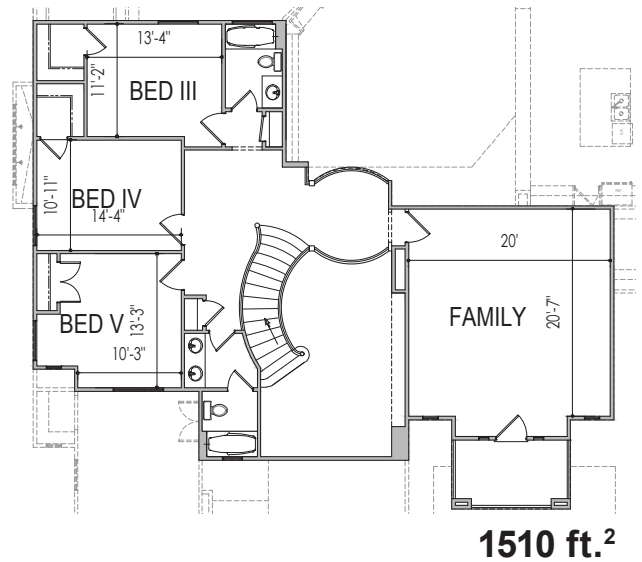
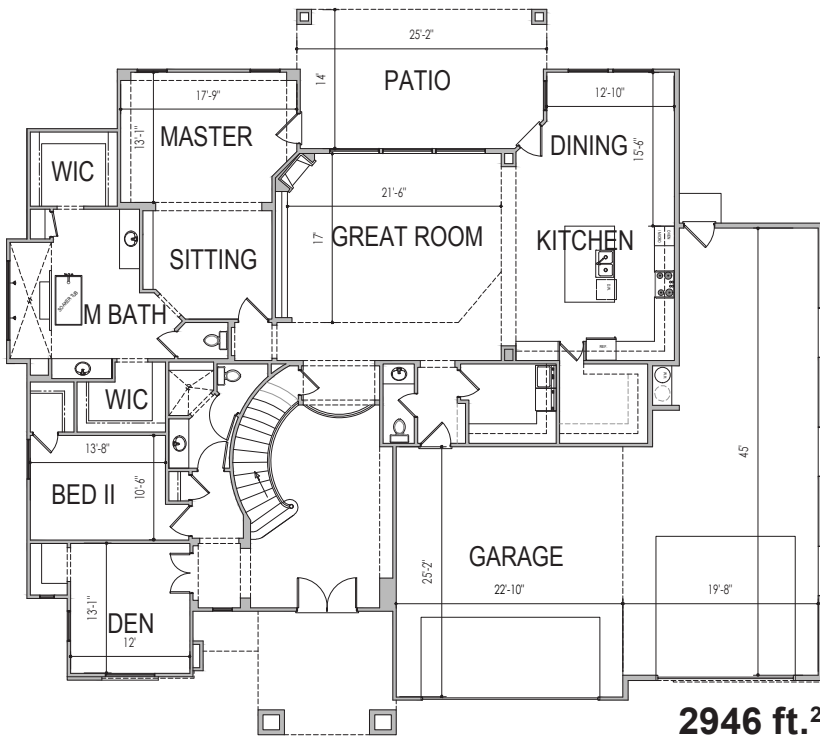


2779 E. Ashwood Lane
St. George, UT 84790



82'x73'

4456 ft.²



*Prices and estimated completion dates are subject to change without notice or obligation. Finished homes may vary from the architectural rendering. Square footage is estimated. [Scan, Download & Register for free in the NoviHome App for more information on all our homes and neighborhoods.](#)



Agent: Shae Leonard
(435)668-3096 - shae@ssrealtysolutions.com

