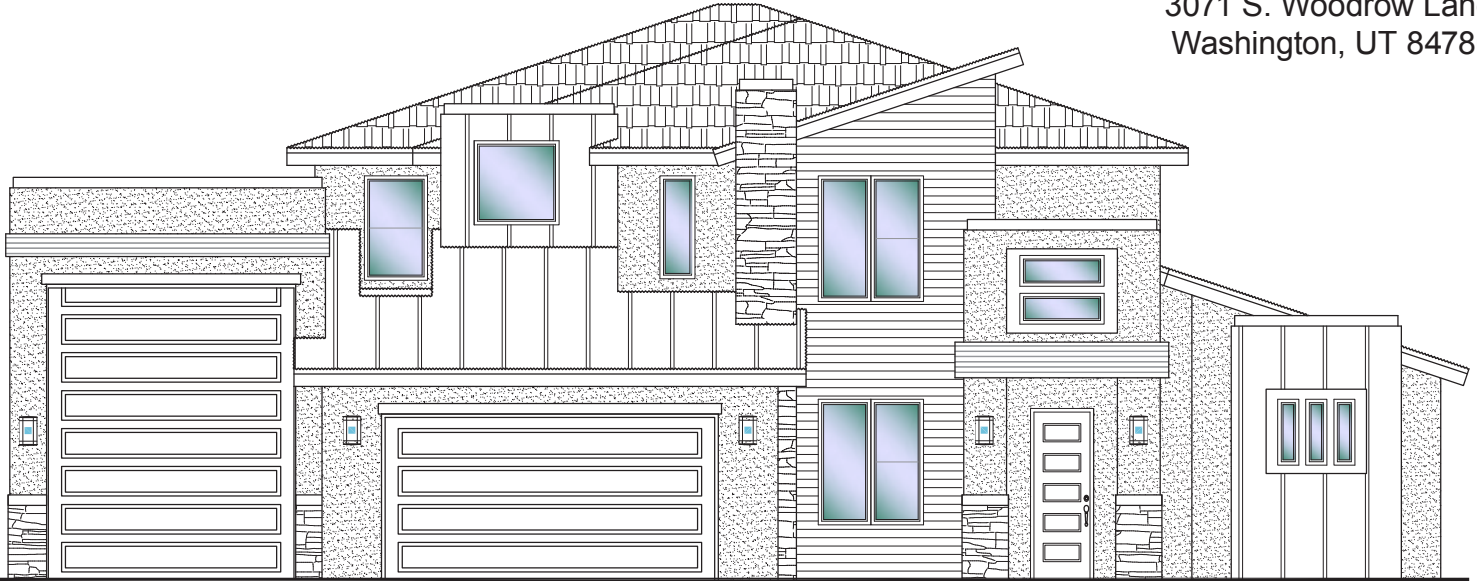




#1 - (UNDER CONST.)*
 4 Bdrm+Casita/4 Bath/2 Gr. Rms/3 Car-RV Garage

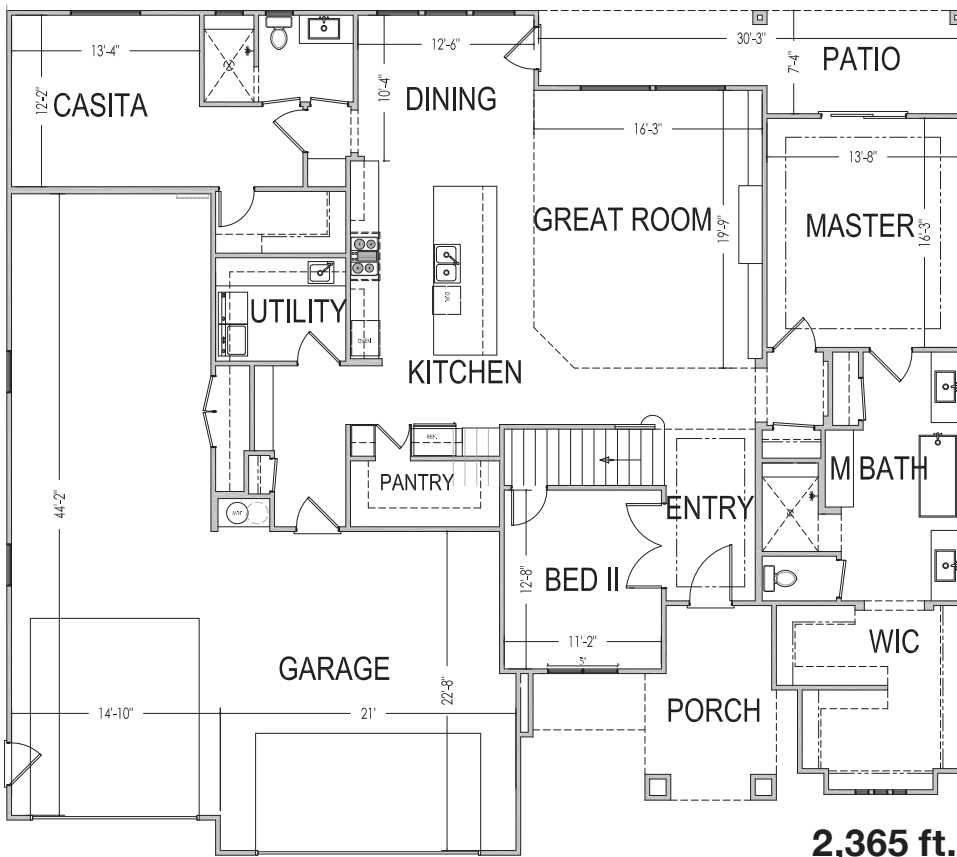
S&S Homes
 www.sshomes.info

3071 S. Woodrow Lane
 Washington, UT 84780

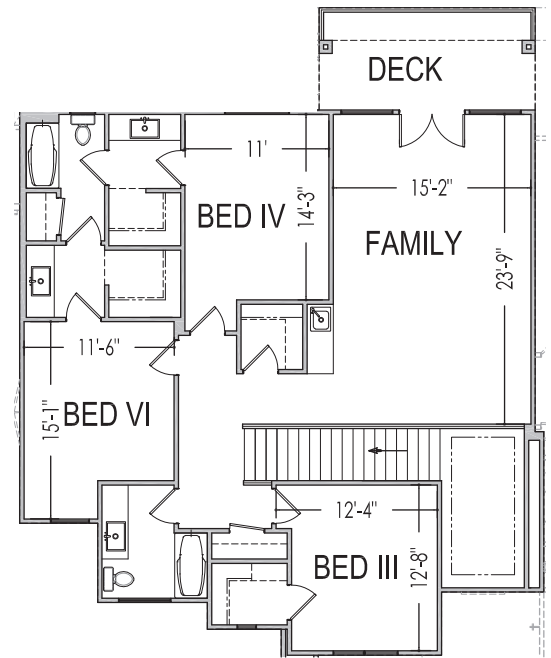


70'x64'

3,790 ft.²



2,365 ft.²



1,420 ft.²

*Prices and estimated completion dates are subject to change without notice or obligation. Finished homes may vary from the architectural rendering. Square footage is estimated. Scan, Download & Register for free in the NoviHome App for more information on all our homes and neighborhoods.



Agent: **Shae Leonard**
 (435)668-3096 - shae@ssrealtysolutions.com

