



#30 - (UNDER CONST.)* 4 Bedroom/2 Bath/3 Car Garage

S&S Homes

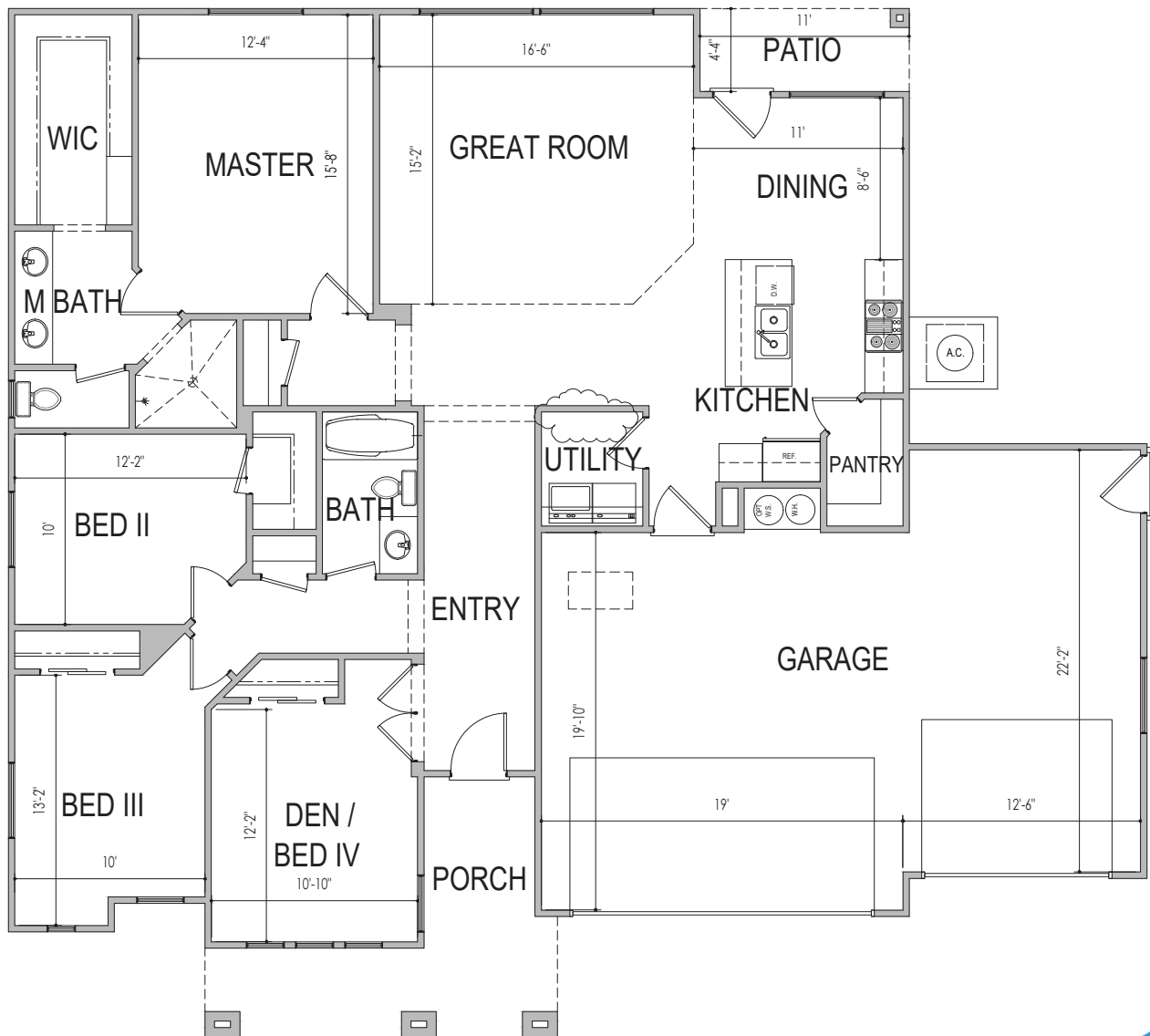
www.sshomes.info

1448 E Black Brush Dr.
Washington, UT 84780



60'x54'

1787 ft.²



*Prices and estimated completion dates are subject to change without notice or obligation. Finished homes may vary from the architectural rendering. Square footage is estimated. Scan, Download & Register for free in the NoviHome App for more information on all our homes and neighborhoods.



Agent: Lori Johansson
(435)669-8618 - lori@ssrealtysolutions.com



MULTIPLE LISTING SERVICE
MLS



S&S Realty
SOLUTIONS