

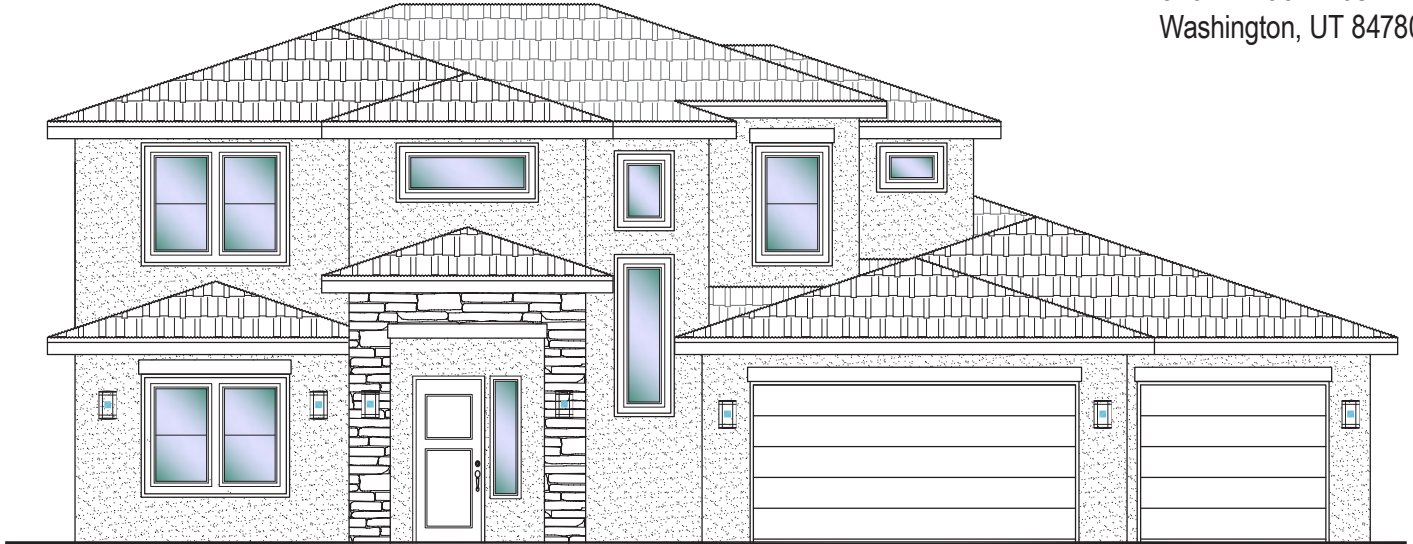


# #24 - (UNDER CONST.) 5 Bedroom/4 Bath/3 Car Garage



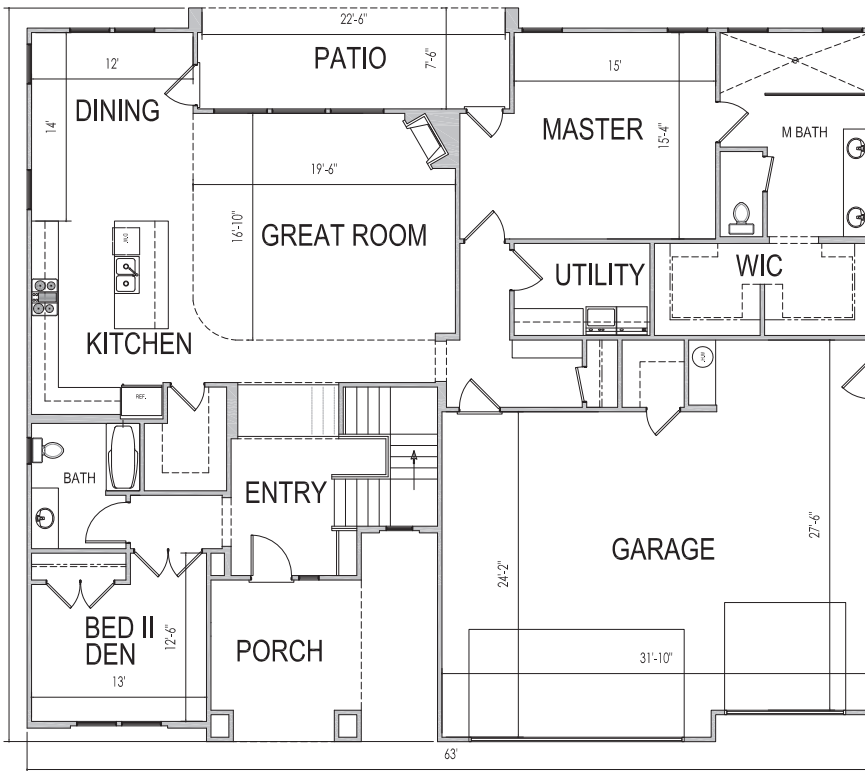
www.sshomes.info

1546 E. Black Brush Dr.  
Washington, UT 84780

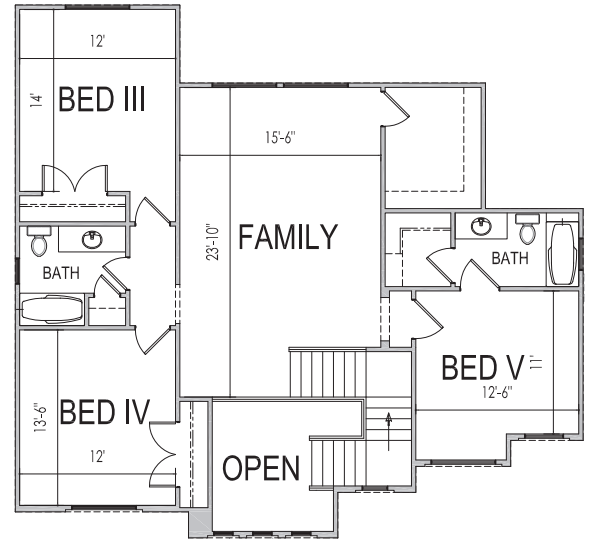


63'x55'

3365 ft.<sup>2</sup>



2071 ft.<sup>2</sup>



1294 ft.<sup>2</sup>

\*Prices and estimated completion dates are subject to change without notice or obligation. Finished homes may vary from the architectural rendering. Square footage is estimated. Scan, Download & Register for free in the NoviHome App for more information on all our homes and neighborhoods.



**Agent: Lori Johansson**  
(435)669-8618 - lori@ssrealtysolutions.com

