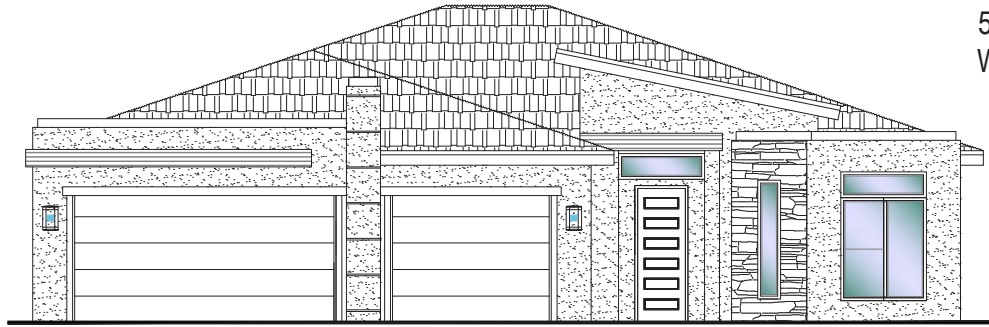




#43 - (UNDER CONST.)*
 3 Bdrm+Casita/3 Bath/3 Car Garage

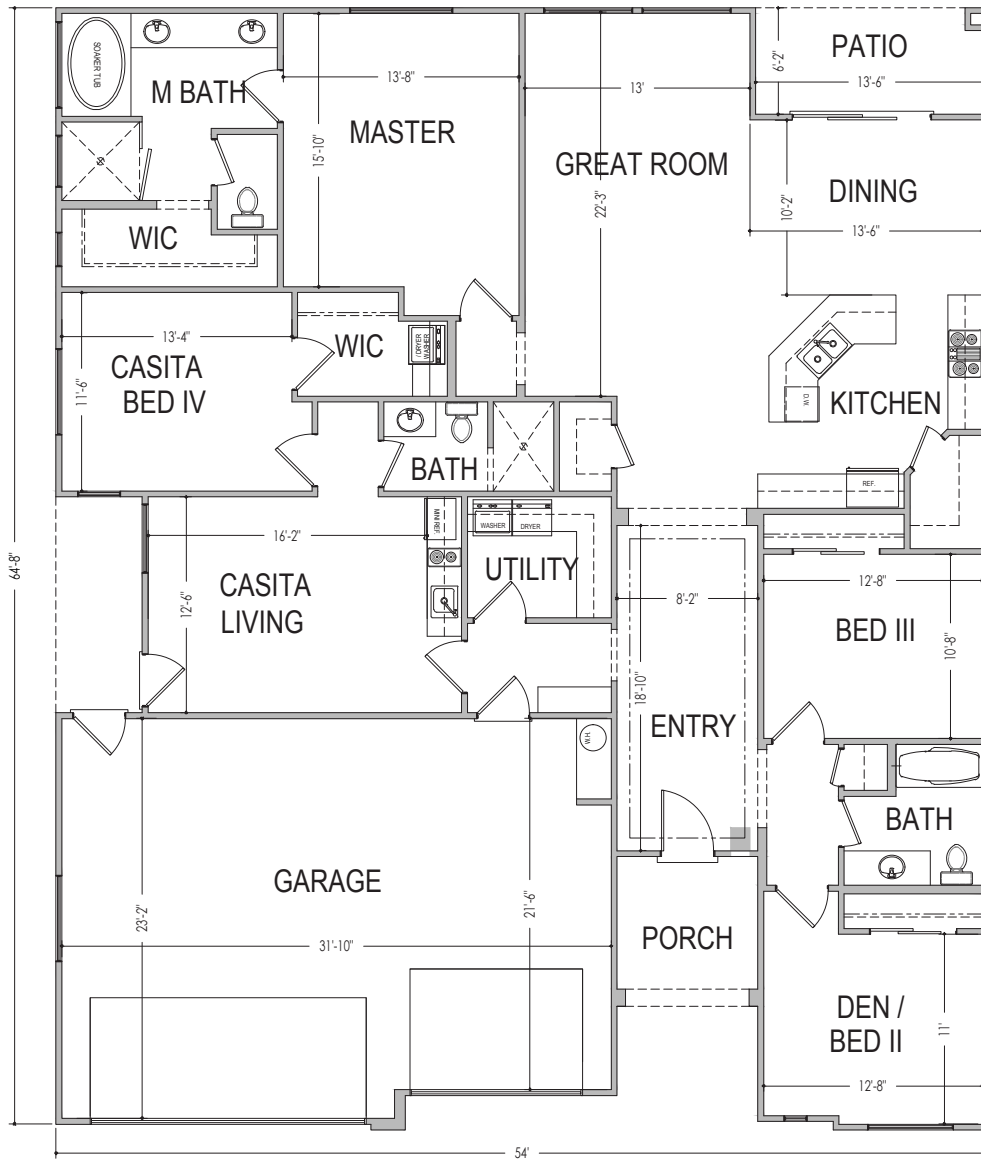


554 S. Deep Creek Dr.
 Washington, UT 84780



54'x65'

2459 ft.²



*Prices and estimated completion dates are subject to change without notice or obligation. Finished homes may vary from the architectural rendering. Square footage is estimated. Scan, Download & Register for free in the NoviHome App for more information on all our homes and neighborhoods.



Agent: Lori Johansson
 (435)669-8618 - lori@ssrealtysolutions.com

