



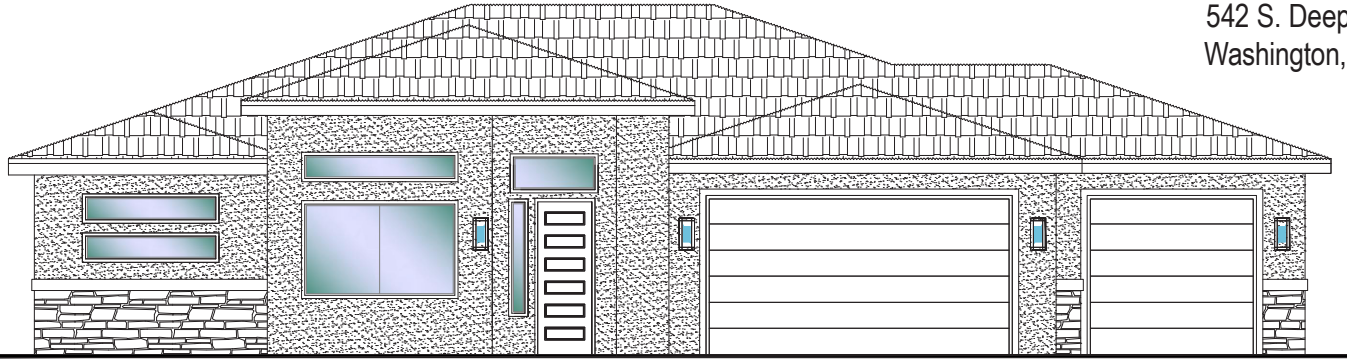
#42 - (UNDER CONST)*

3 Bdrm/2 Bath/3 Car Garage



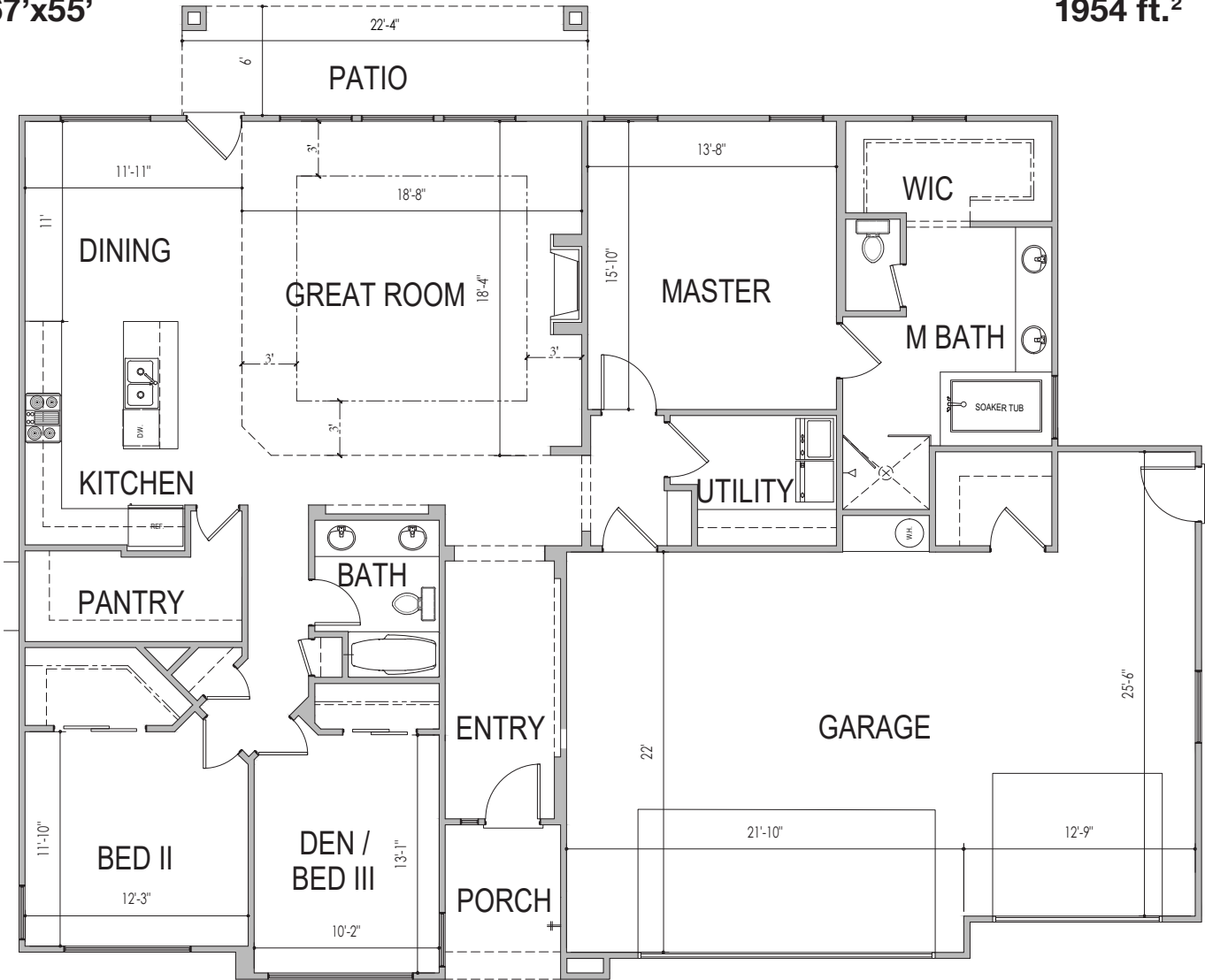
www.sshomes.info

542 S. Deep Creek Dr.
Washington, UT 84780



67'x55'

1954 ft.²



*Prices and estimated completion dates are subject to change without notice or obligation. Finished homes may vary from the architectural rendering. Square footage is estimated. [Scan, Download & Register for free in the NoviHome App for more information on all our homes and neighborhoods.](#)



Agent: Lori Johansson
(435)669-8618 - lori@ssrealtysolutions.com

