



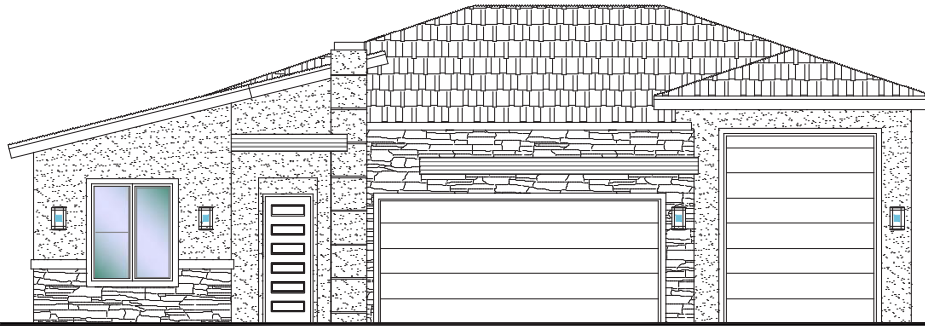
**DESERT
CLIFFS**

#210 - (UNDER CONST.)*
3 Bedroom/2.5 Bath/3 Car-RV Garage

S&S Homes

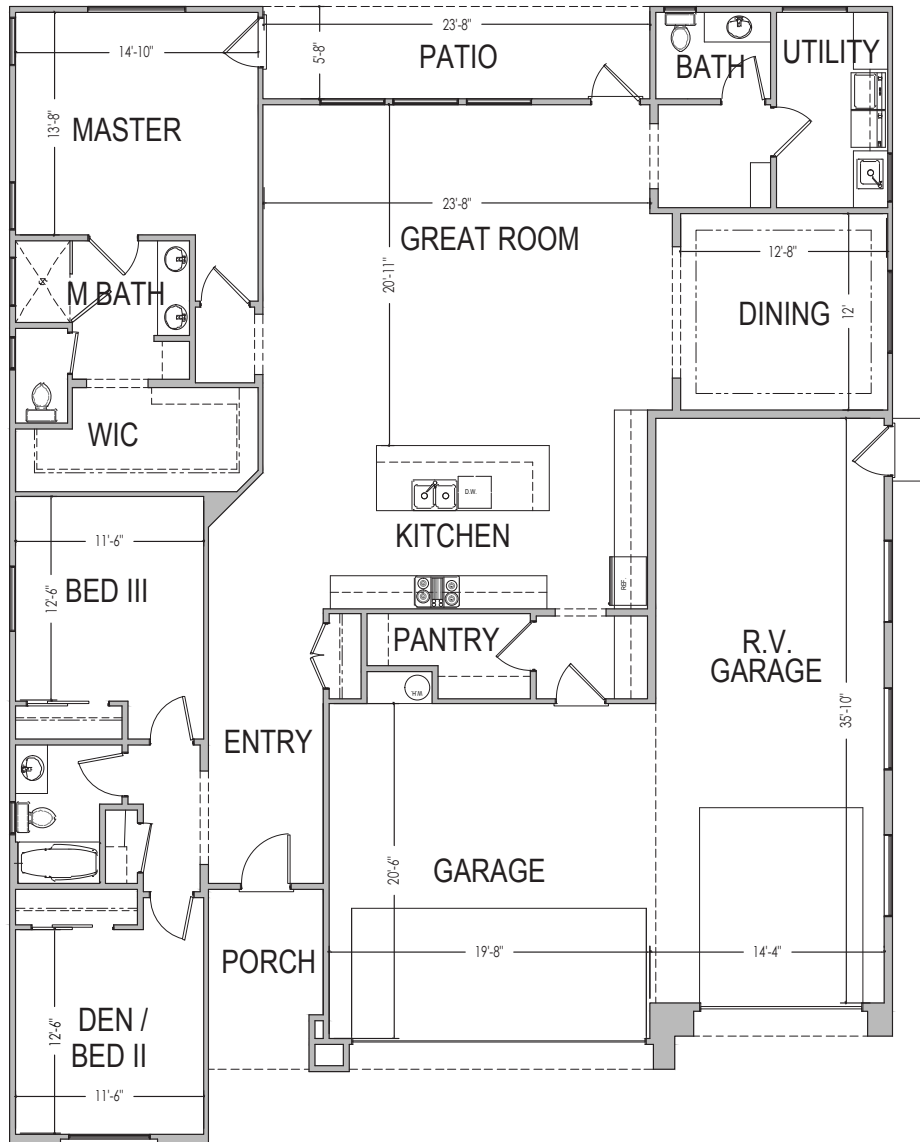
www.sshomes.info

(210) S Bunda Ln
St. George, UT 84790



54'x70'

2,325 ft.²



*Prices and estimated completion dates are subject to change without notice or obligation. Finished homes may vary from the architectural rendering. Square footage is estimated. Scan, Download & Register for free in the NoviHome App for more information on all our homes and neighborhoods.



Agent: Shae Leonard
(435)668-3096 - shae@ssrealtysolutions.com



MULTIPLE LISTING SERVICE
MLS



S&S Realty
SOLUTIONS