



**DESERT
CLIFFS**

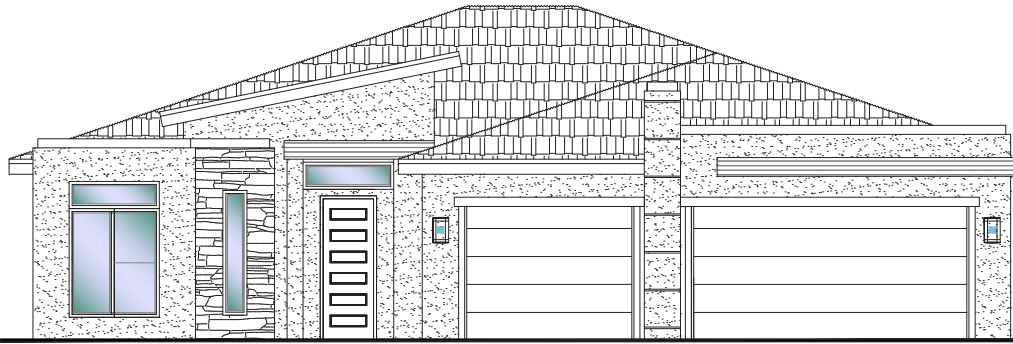
#124 - (UNDER CONST.)*

4 Bedroom+Full Casita/3 Bath/3 Car Garage

S&S Homes

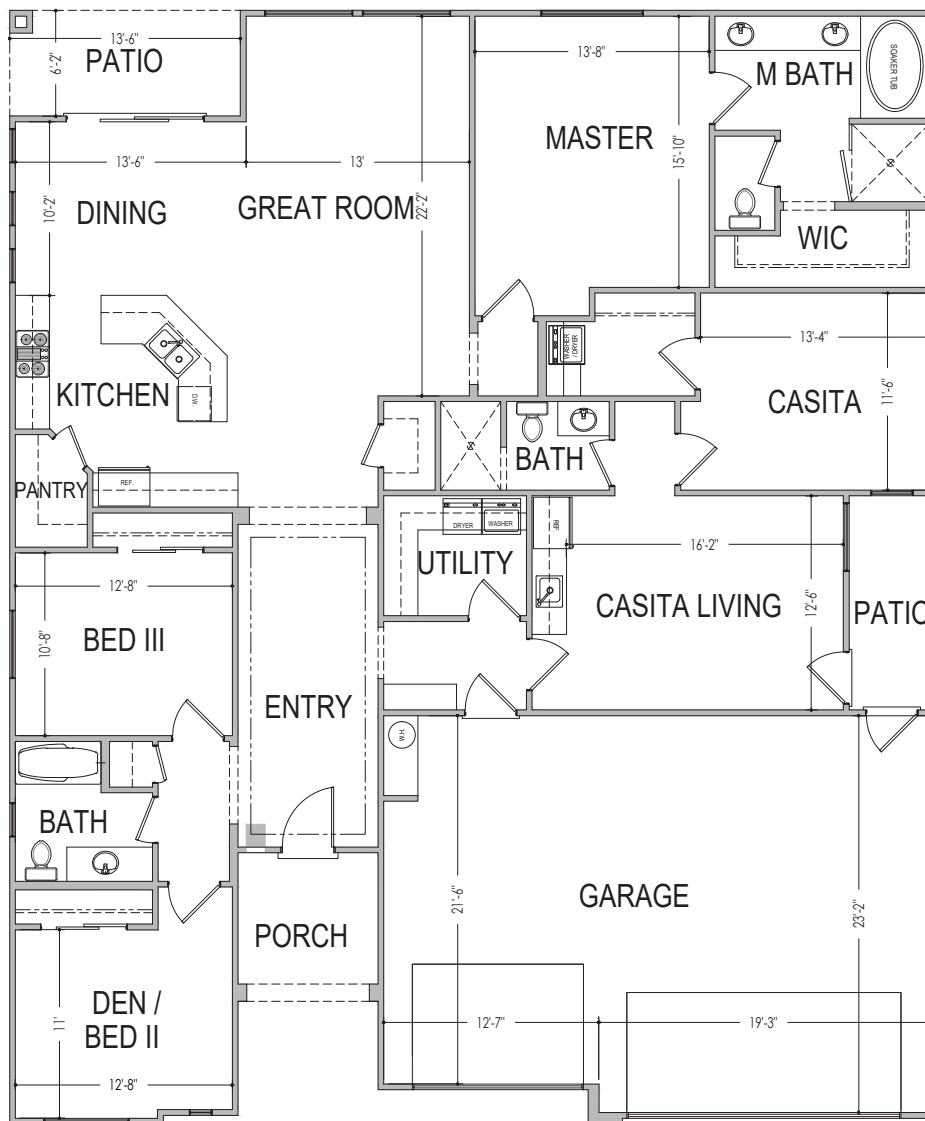
www.sshomes.info

3936 E Cerro Way
St. George, UT 84790



54'x65'

2,459 ft.²



*Prices and estimated completion dates are subject to change without notice or obligation. Finished homes may vary from the architectural rendering. Square footage is estimated. Scan, Download & Register for free in the NoviHome App for more information on all our homes and neighborhoods.



Agent: Shae Leonard
(435)668-3096 - shae@ssrealtysolutions.com



MULTIPLE LISTING SERVICE
MLS



S&S Realty
SOLUTIONS