



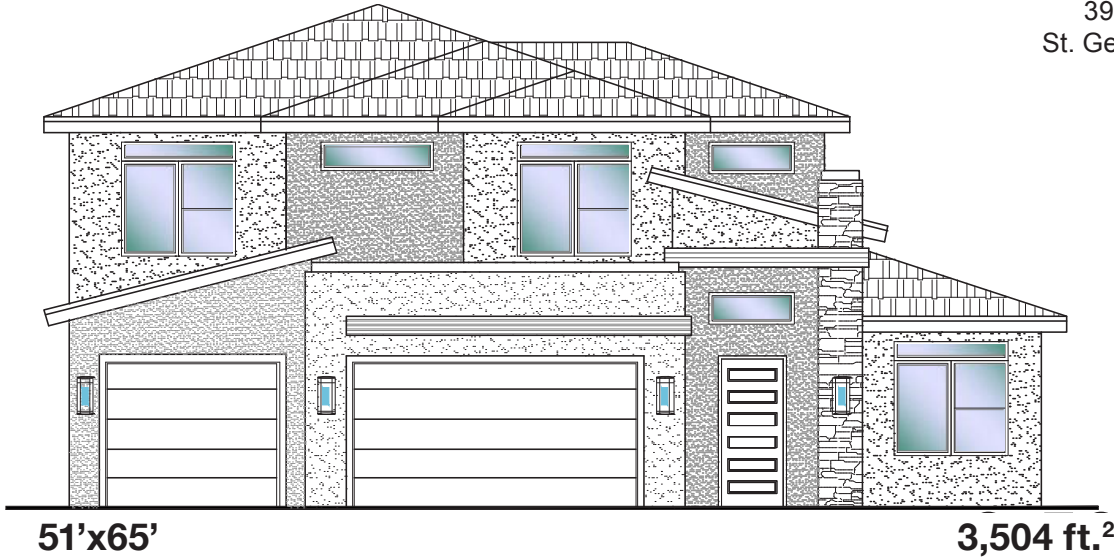
**DESERT
CLIFFS**

#106 - (UNDER CONST.)*
6 Bedroom/4 Bath/3 Car Garage

S&S Homes

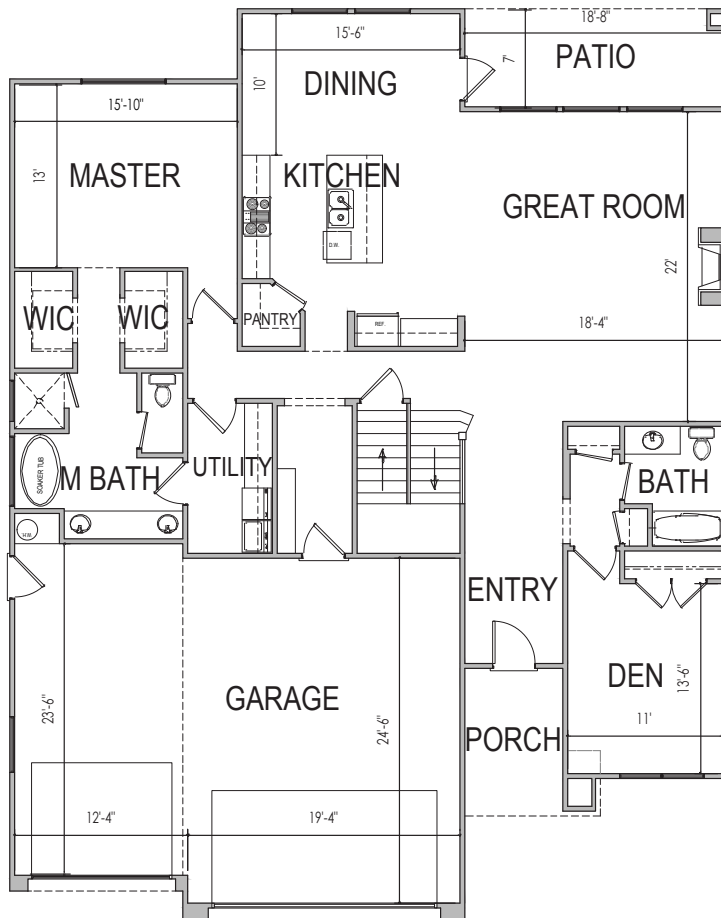
www.sshomes.info

3949 E Cerro Way
St. George, UT 84790

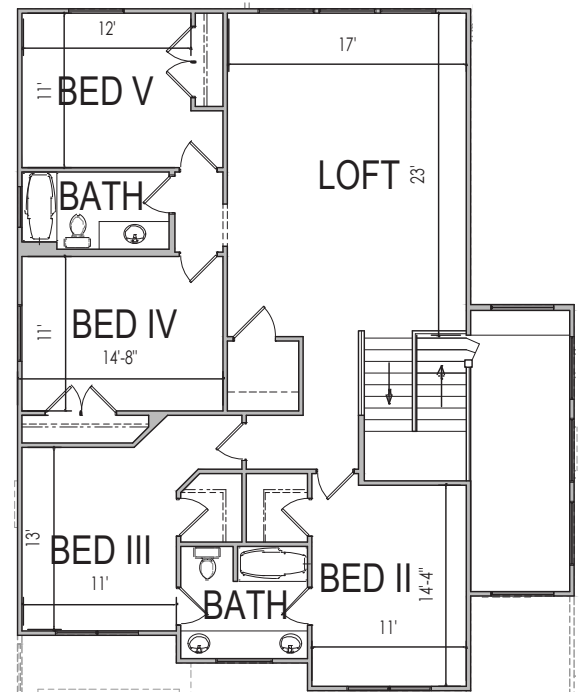


51'x65'

3,504 ft.²



1994 ft.²



1510 ft.²

*Prices and estimated completion dates are subject to change without notice or obligation. Finished homes may vary from the architectural rendering. Square footage is estimated. [Scan, Download & Register for free in the NoviHome App for more information on all our homes and neighborhoods.](#)



Agent: Shae Leonard
(435)668-3096 - shae@ssrealtysolutions.com



MULTIPLE LISTING SERVICE
MLS



S&S Realty
SOLUTIONS