

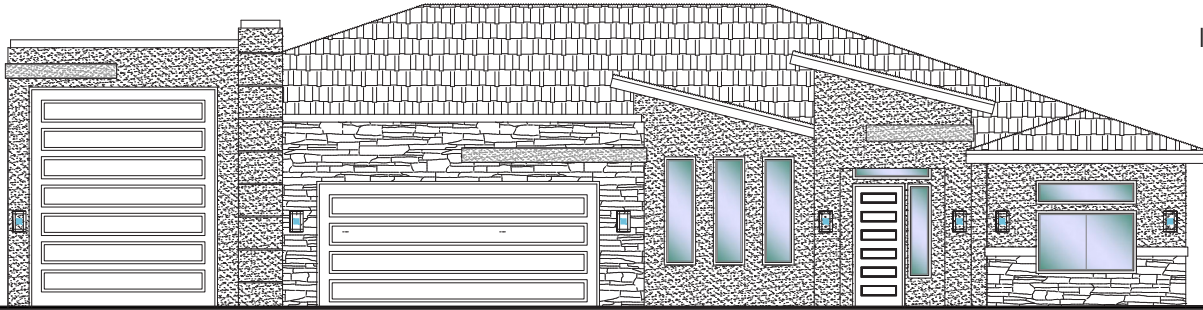


#65- (UNDER CONST.)*
 4 Bedroom/2.5 Bath/3 Car Garage



www.sshomes.info

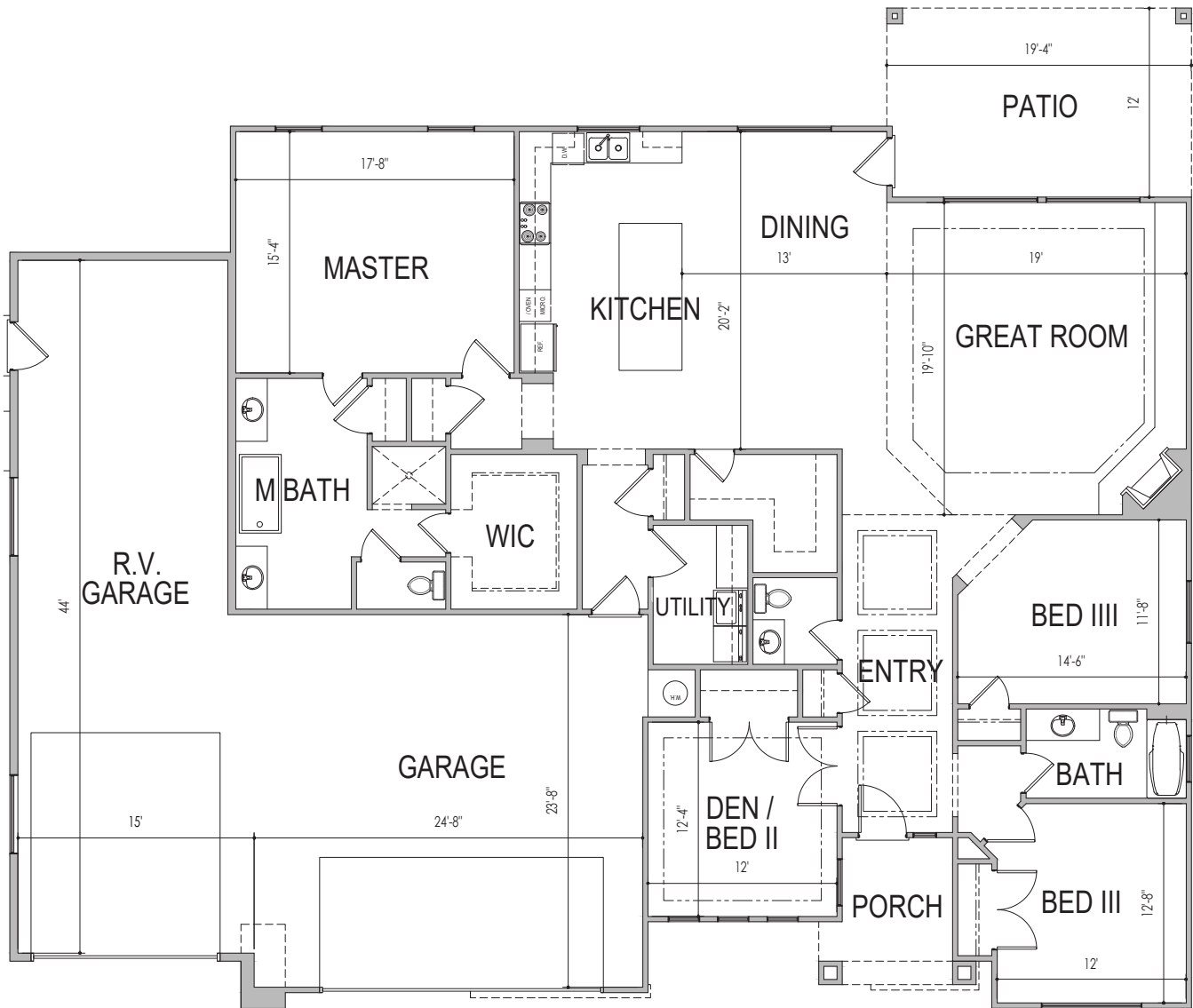
266 S 620 W
 Ivins, UT 84738



75'x64'

ELEVATION C

2512 sq.ft.



*Prices, estimated completion dates, elevations, styles, colors, features, and finished homes may vary from the architectural rendering and are subject to change without notice or obligation. Square footage is estimated. [Scan, Download & Register for free in the NoviHome App for more information on all our homes and neighborhoods.](#)



Agent: Alisa Huser
 (435)669-6460 - alisa@ssrealtysolutions.com

