



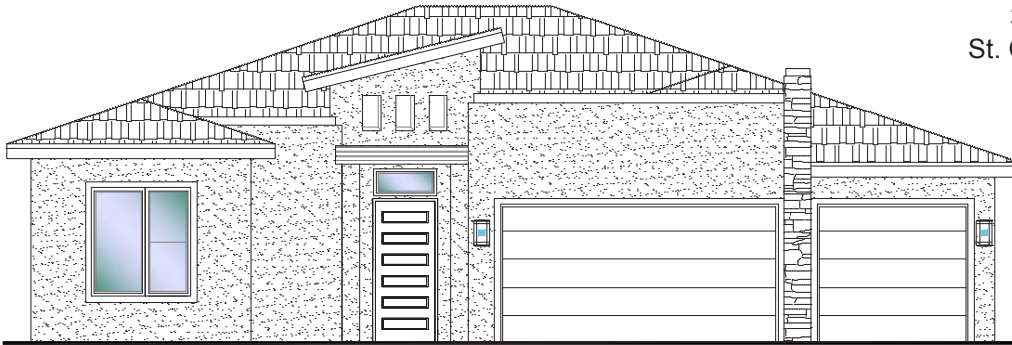
**DESERT  
CLIFFS**

**#125 - (UNDER CONST.)\***  
3 Bedroom/2.5 Bath/3 Car Garage

**S&S Homes**

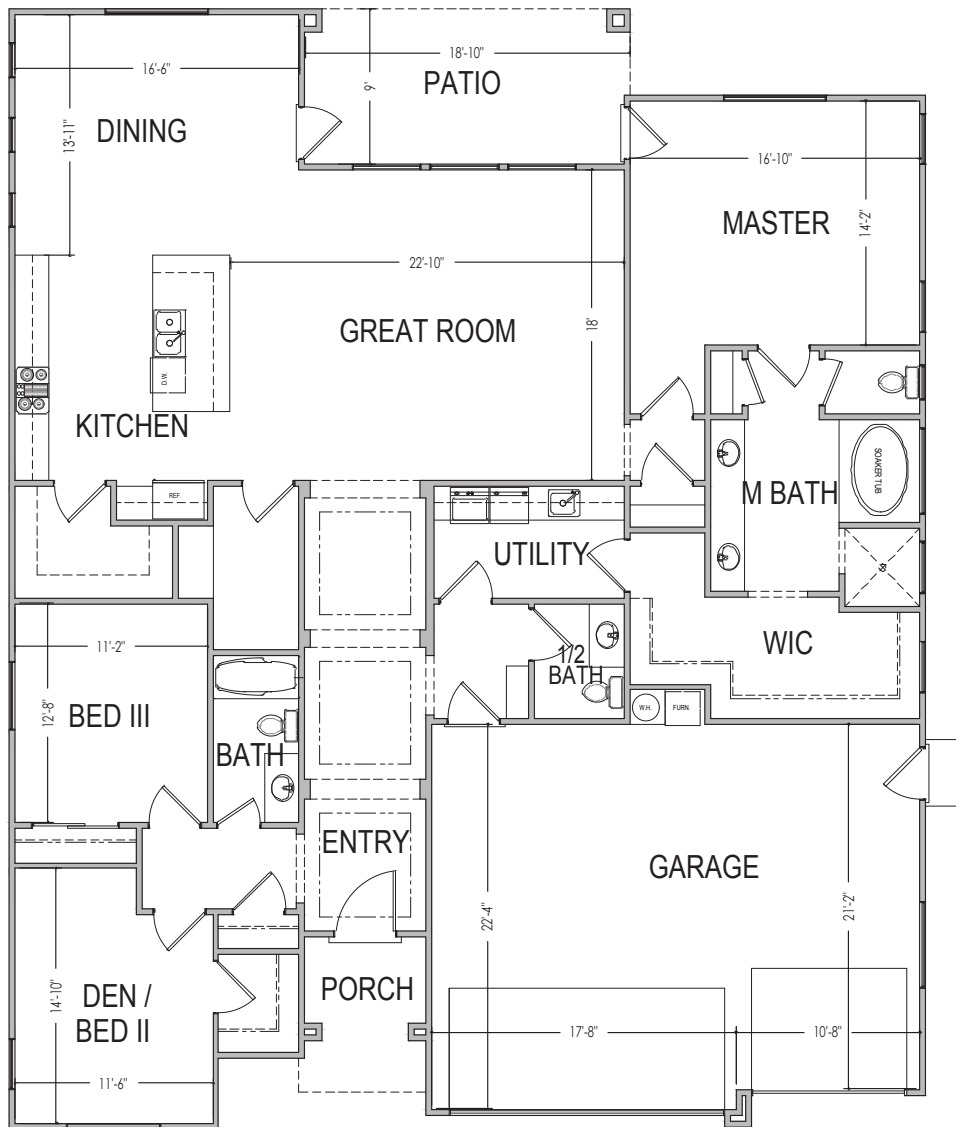
www.sshomes.info

3922 E Cerro Way  
St. George, UT 84790



**53'x65'**

**2,416 ft.<sup>2</sup>**



\*Prices and estimated completion dates are subject to change without notice or obligation. Finished homes may vary from the architectural rendering. Square footage is estimated. [Scan, Download & Register for free in the NoviHome App for more information on all our homes and neighborhoods.](#)



**Agent: Shae Leonard**  
(435)668-3096 - shae@ssrealtysolutions.com



MULTIPLE LISTING SERVICE  
**MLS**



**S&S Realty**  
SOLUTIONS