



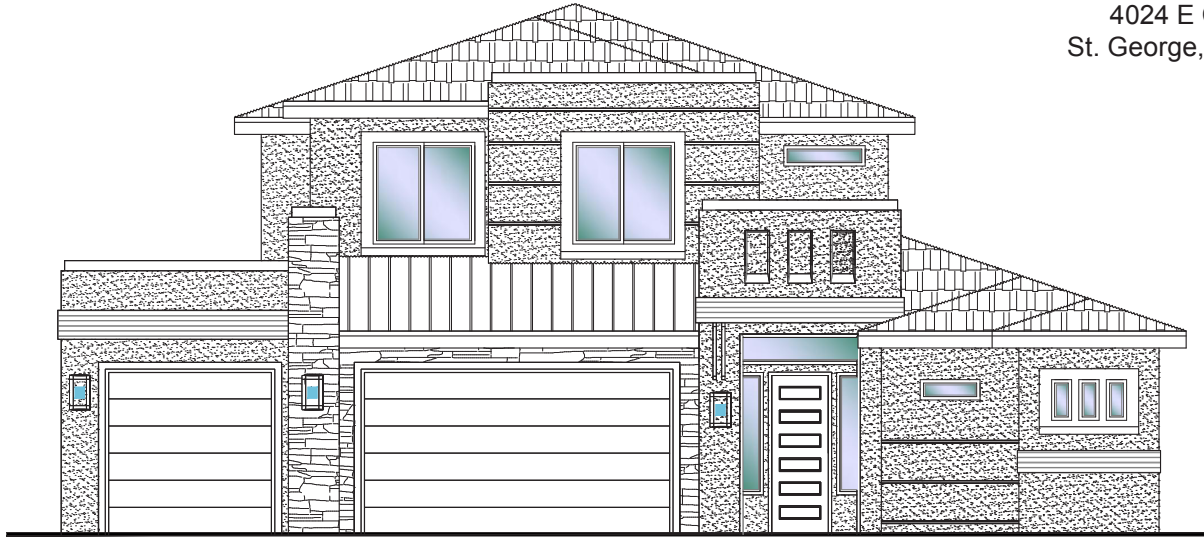
**DESERT
CLIFFS**

#116 - (UNDER CONST.)*
5 Bedroom/4 Bath/3 Car Garage

S&S Homes

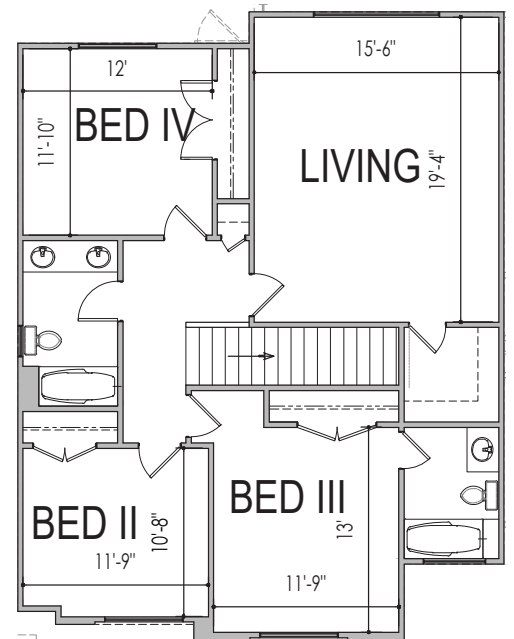
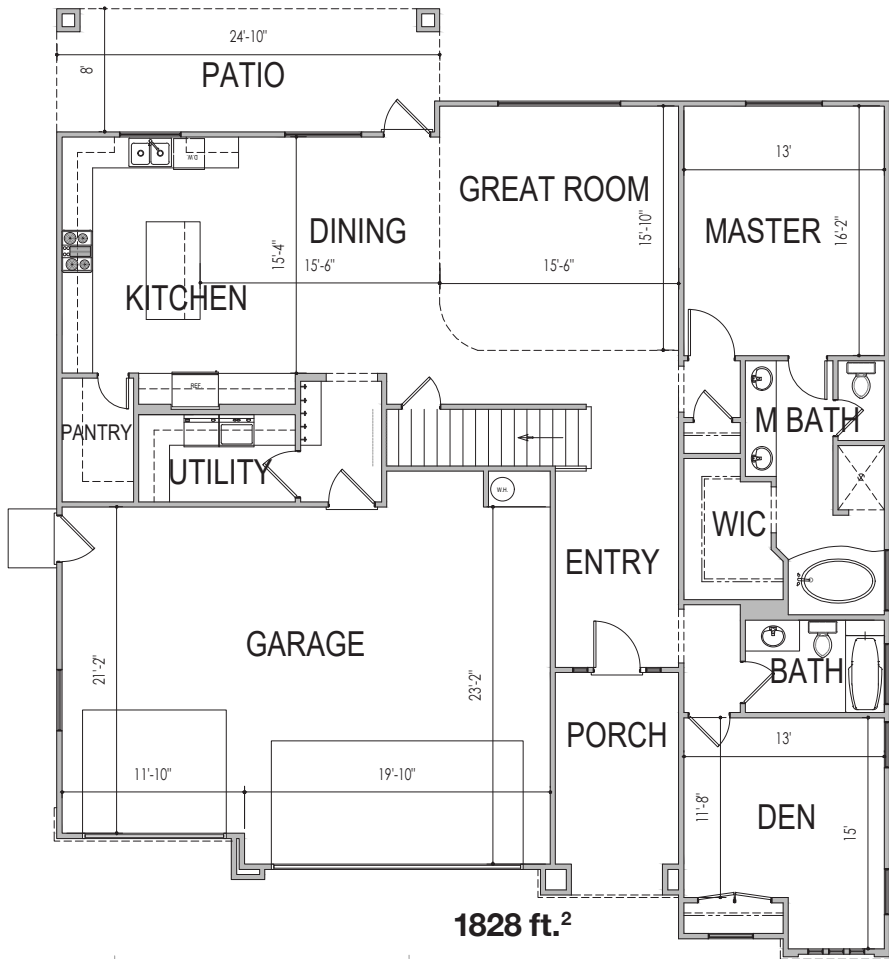
www.sshomes.info

4024 E Cerro Way
St. George, UT 84790



54'x62'

2,983 ft.²



*Prices and estimated completion dates are subject to change without notice or obligation. Finished homes may vary from the architectural rendering. Square footage is estimated. [Scan, Download & Register for free in the NoviHome App for more information on all our homes and neighborhoods.](#)



Agent: Shae Leonard
(435)668-3096 - shae@ssrealtysolutions.com



MULTIPLE LISTING SERVICE
MLS



S&S Realty
SOLUTIONS