



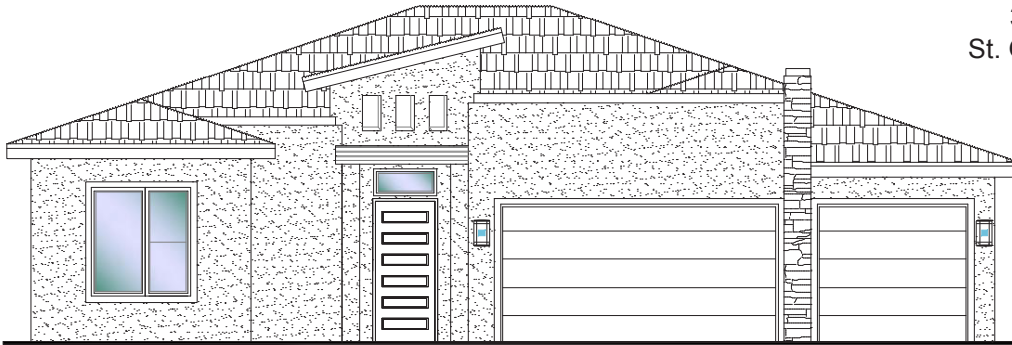
**DESERT
CLIFFS**

LOT#100 - (UNDER CONST.)*
3 Bedroom/2.5 Bath/3 Car Garage

S&S Homes

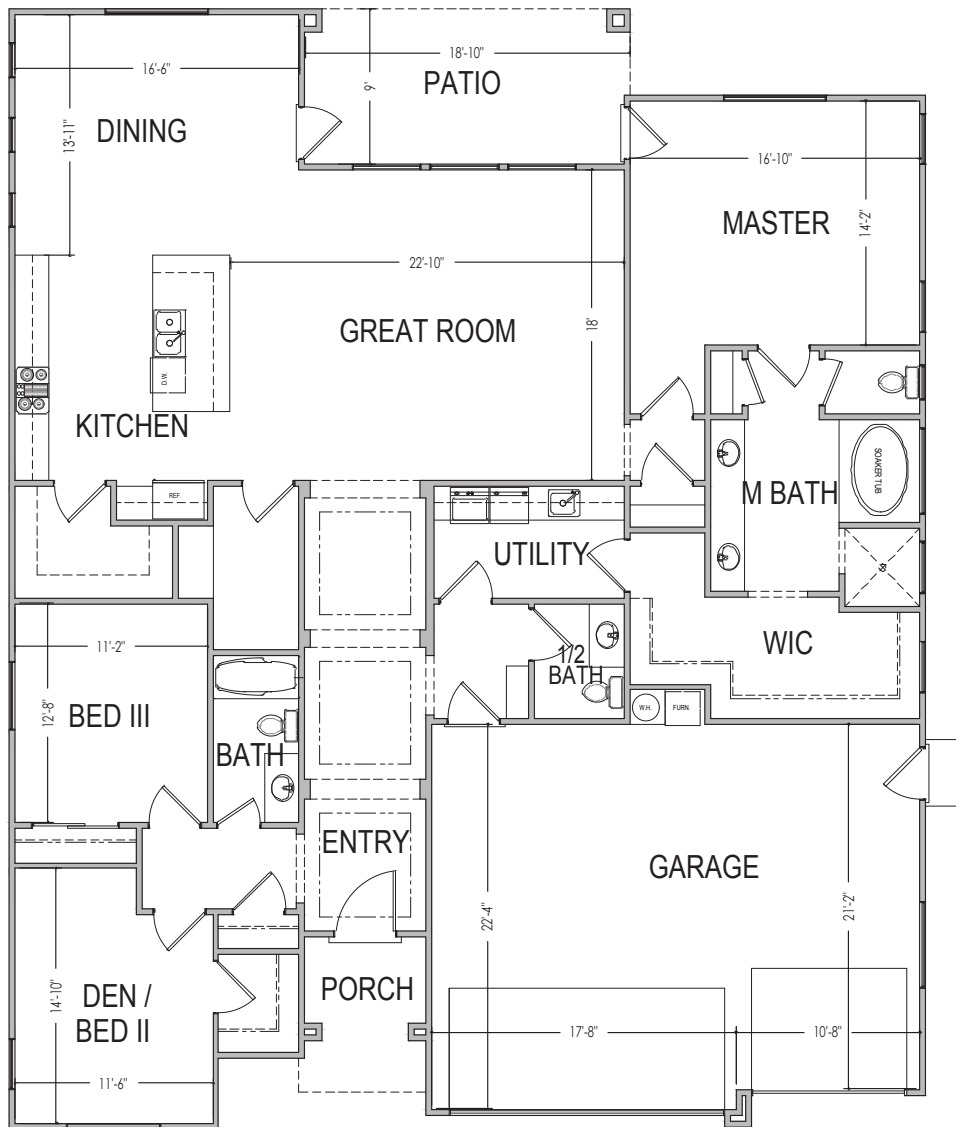
www.sshomes.info

3899 E Cerro Way
St. George, UT 84790



53'x65'

2,416 ft.²



*Prices and estimated completion dates are subject to change without notice or obligation. Finished homes may vary from the architectural rendering. Square footage is estimated. [Scan, Download & Register for free in the NoviHome App for more information on all our homes and neighborhoods.](#)



Agent: Shae Leonard
(435)668-3096 - shae@ssrealtysolutions.com



MULTIPLE LISTING SERVICE
MLS



S&S Realty
SOLUTIONS