





LOT#	SQ. FT.	LEVELS	BEDS	BATHS	GARAGE	EST. DATE*	FOR SALE
10	4892	2	5+Casita	4.5	3-RV	 Move-In-Ready*	\$1,312,900*
13	4892	2	5+Casita	4.5	3-RV	 Move-In-Ready*	\$1,299,900*
18	4892	2	5+Casita	4.5	3-RV	 Move-In-Ready*	\$1,312,900*
21	4892	2	5+Casita	4.5	3-RV	Mar.'25*	\$1,299,900*
36	3798	2	5+Den	5	3-RV	 MIR* + (Staged)	\$1,098,900*
37	3386	2	4+Den	4.5	3 Car+RV	Jul.'25*	CALL FOR PRICE*
44	4300	2	5+Den	4.5	3 Car+RV	Jul.'25*	CALL FOR PRICE*
45	3350	1	4+Den	3.5	3-RV	May.'25*	\$1,027,900*
50	3790	2	5+Den	5	3-RV	May.'25*	\$1,061,900*
51	4025	2	6+Den+Flex	4.5	3-RV	Jun.'25*	\$1,196,900*

TAKE A SELF TOUR OF OUR HOMES WITH  **NterNow** SCAN THE QR CODE ON THE DOOR FOR ACCESS

STANDARD FEATURES

INTERIOR*

- GE Cafe Appliances
- Energy Saving LED Light Bulbs
- Designer Selected Quartz Counter Tops
- Air Switch in Island for Disposal
- Under-Mount Stainless Steel Kitchen Sink with Garbage Disposal
- Stained Knotty Alder Wood Cabinets
- 36" Tall Base Cabinets
- Soft Close Cabinet Doors and Side Mount Drawer Guides
- 18" Tile Kitchen Backsplash
- Pull Down Delta Essa® Collection Stainless Steel Kitchen Faucet
- Delta® Modern Chrome Faucets Throughout
- Tile Shower & Tub Surrounds with Deco Accent Tile
- Toilet Paper Holders & Towel Bars
- Elongated Toilets in All Baths
- Full Width Mirrors above Vanity
- Luxury Vinyl Plank or Tile Floors in Entry, Kitchen, Nook, Baths & Utility Room
- Decora Light Switches
- Ceiling Fan Pre-wire in all Bedrooms and Living Rooms
- Old World Wall Texture and Stomp Ceiling Texture
- Stair Rail Skirting (As per Two-Story Plan)
- Two-Tone Paint Throughout Home (Garage One-Tone Only)
- Epoxy Garage Flooring
- Trim - 5" Base, 3" Case
- Elevated Ceilings (As per Plan)

EXTERIOR*

- 95% Gas Furnace and 14 SEER A/C Dual Fuel Above Industry Standard of 80% Furnace
- 50 Gallon Gas Water Heater

- Insulation: R-15 Walls & R-38 Ceiling
- 1" Foam Insulation Thermal/Moisture Barrier on Exterior Walls Adding R-4 to Insulation increasing up to R-19
- Radiant Sheeting in the Attic
- 3 Car Garage with RV Garage options (As per Plan)
- Synthetic Stucco Finish Coat
- Cultured Stone and Siding Accents (per Elevation)
- Rain Gutters
- Border Accents on Driveway
- Front & Rear Yard Professional Landscaping
- Partial Rear Yard Cinder Block Walls
- Fire Rated Garage Entry Door
- 8' Fiberglass Stained Front Door
- Low Energy Dual Pane Vinyl Windows
- Fire Resistant Flat Cement Roof Tiles (per Elevation)
- Dead Bolt Locks on All Exterior Doors
- Pre-Plumbed Soft Water Loop
- 8' Designer Selected Insulated Garage Doors With Openers

CONNECTIVITY*

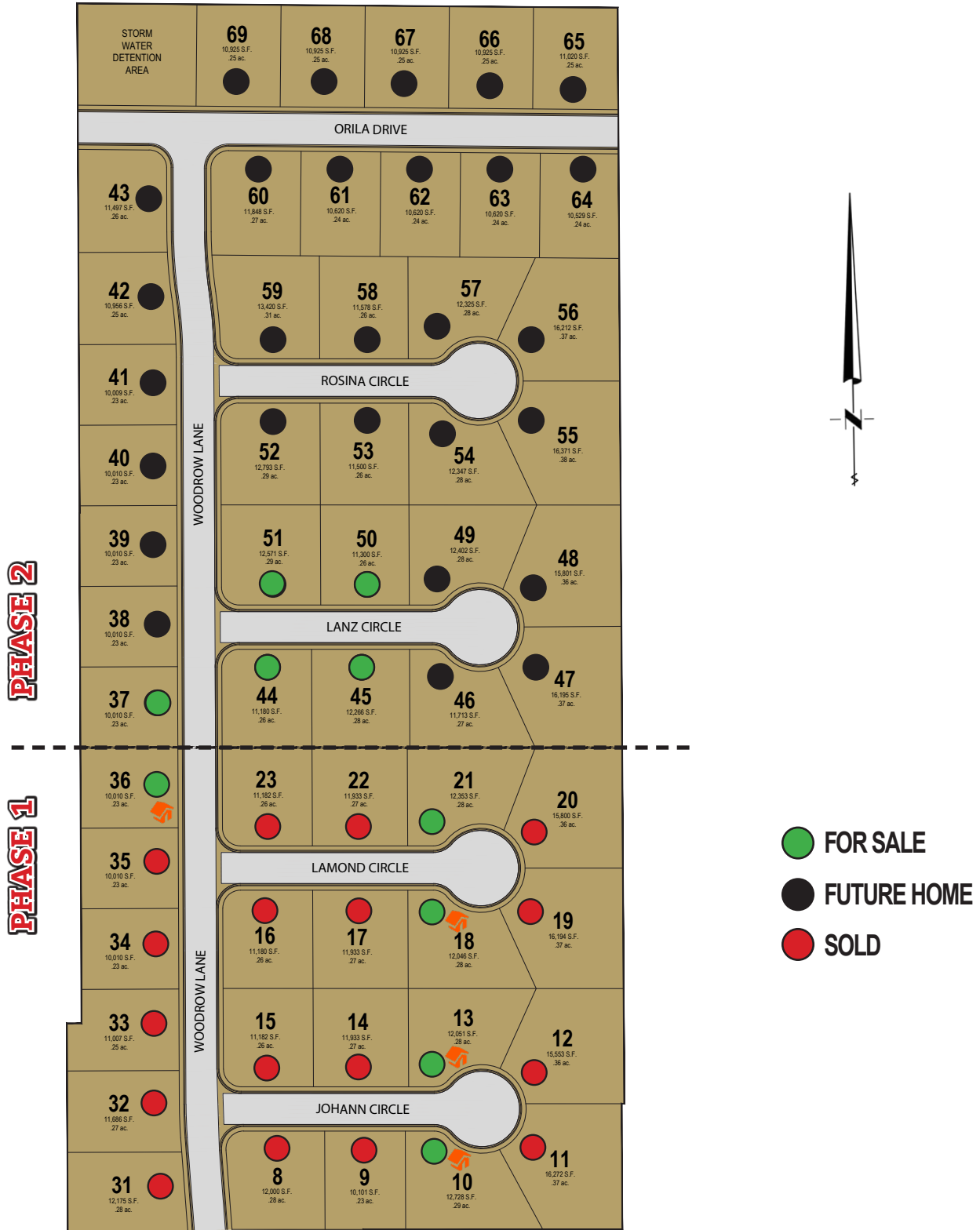
- Video Doorbell with iOS/Android Support
- Smart Door Lock with Keypad
- Smart Garage Door Opener
- Prewire for Outdoor Security Cameras
- Smart Programmable Thermostat
- Fiber Optic Internet Community
- Fiber Optic Cable Run into Oversized Interior Low Voltage Panel
- Prewire or Sleeved for Cable, Phone Service and Satellite
- Ethernet and TV Drops run to Great Room(s) and Bedrooms
- Prewire for 5.1 Surround Sound in Living Room

*Prices, estimated completion dates, elevations, styles, colors, features, and finished homes may vary from the architectural rendering and are subject to change without notice or obligation. *Square footage is estimated. Scan QR CODE for more information on available homes and neighborhoods.



Agent: Shae Leonard
(435)668-3096 - shae@ssrealtysolutions.com





*Prices, estimated completion dates, elevations, styles, colors, features, and finished homes may vary from the architectural rendering and are subject to change without notice or obligation. *Square footage is estimated. [Scan QR CODE for more information on available homes and neighborhoods.](#)



Agent: Shae Leonard
(435)668-3096 - shae@ssrealtysolutions.com





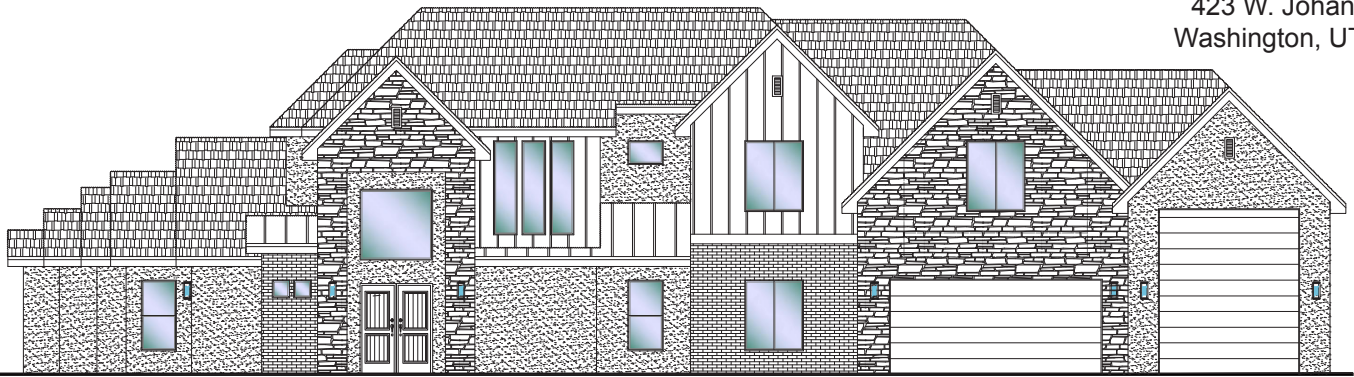
#10 - FOR SALE*

5 Bed+Casita | 4.5 Bath | 3 Car-RV Garage

S&S Homes

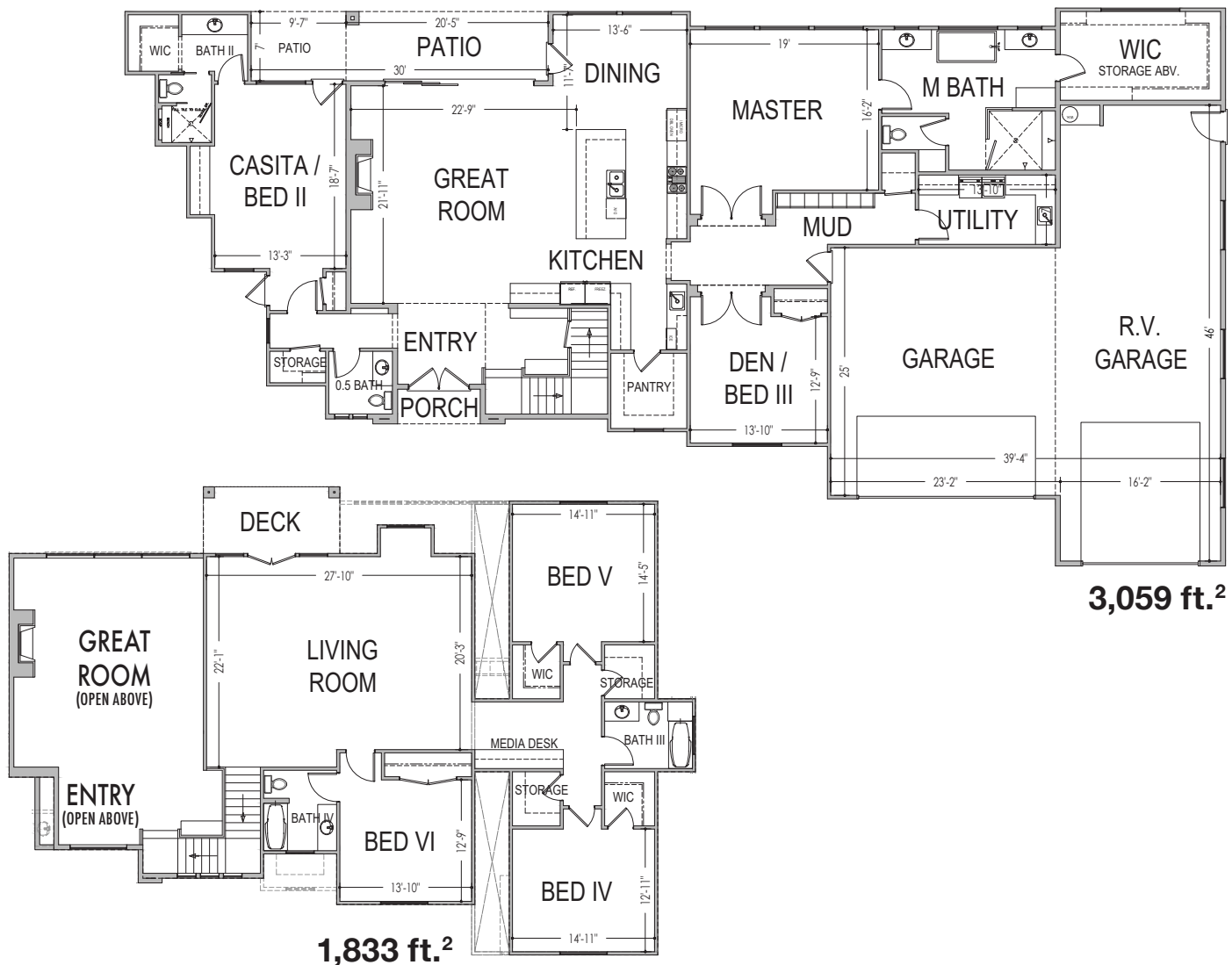
www.sshomes.info

423 W. Johann Circle
Washington, UT 84780



111'x56'

4,892 ft.²



*Prices, estimated completion dates, elevations, styles, colors, features, and finished homes may vary from the architectural rendering and are subject to change without notice or obligation. *Square footage is estimated. [Scan QR CODE for more information on available homes and neighborhoods.](#)



Agent: Shae Leonard
(435)668-3096 - shae@ssrealtysolutions.com



MLS



S&S Realty
SOLUTIONS





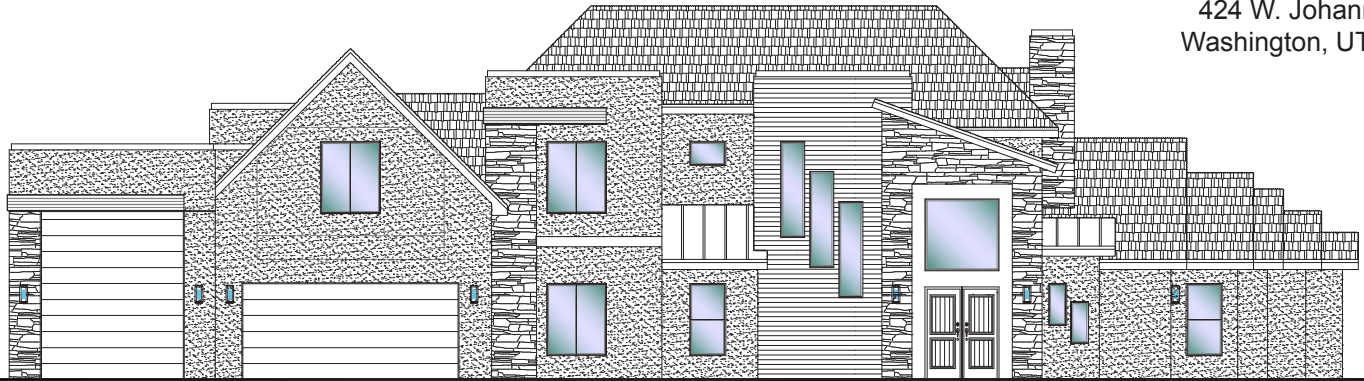
#13 - FOR SALE*

5 Bed+Casita | 4.5 Bath | 3 Car-RV Garage

S&S Homes

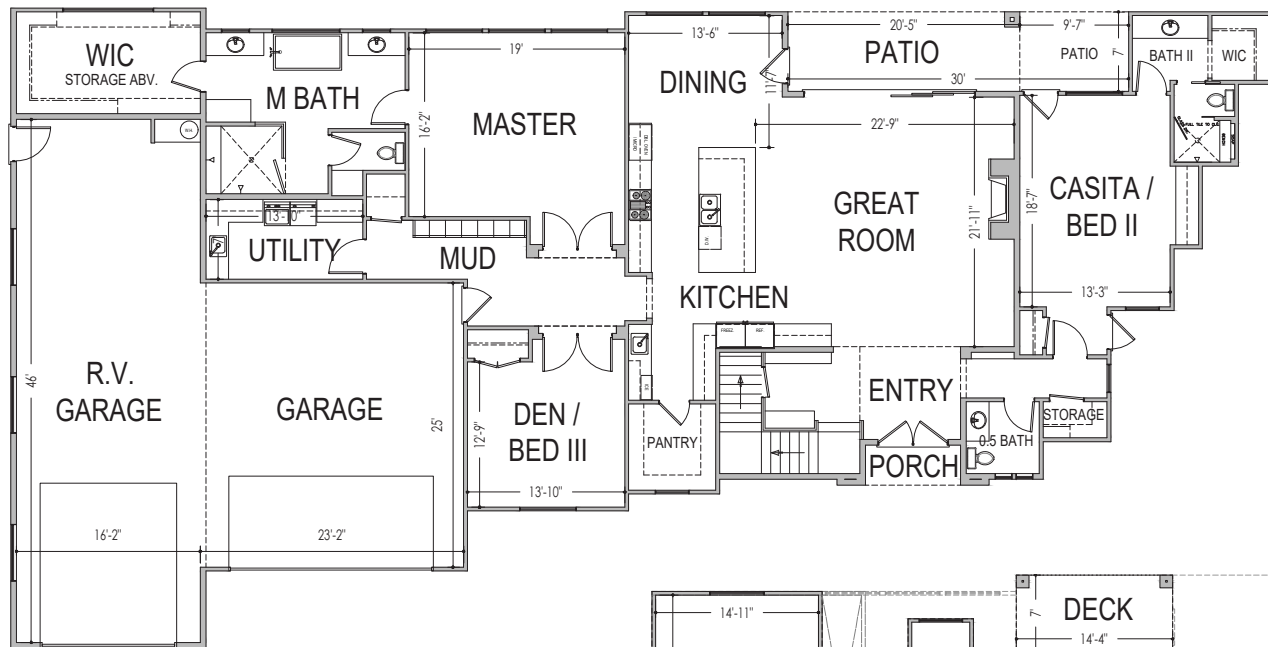
www.sshomes.info

424 W. Johann Circle
Washington, UT 84780

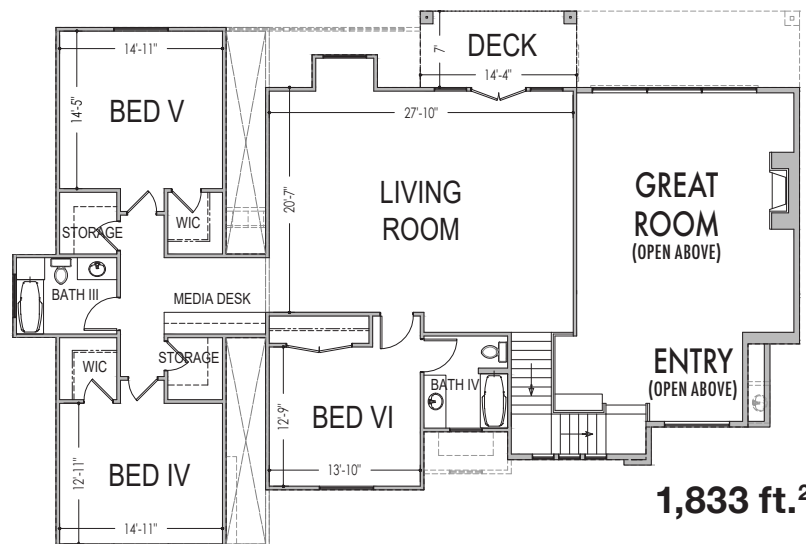


111'x56'

4,892 ft.²



3,059 ft.²



1,833 ft.²

*Prices, estimated completion dates, elevations, styles, colors, features, and finished homes may vary from the architectural rendering and are subject to change without notice or obligation. *Square footage is estimated. [Scan QR CODE for more information on available homes and neighborhoods.](#)



Agent: Shae Leonard
(435)668-3096 - shae@ssrealtysolutions.com



MLS



S&S Realty
SOLUTIONS





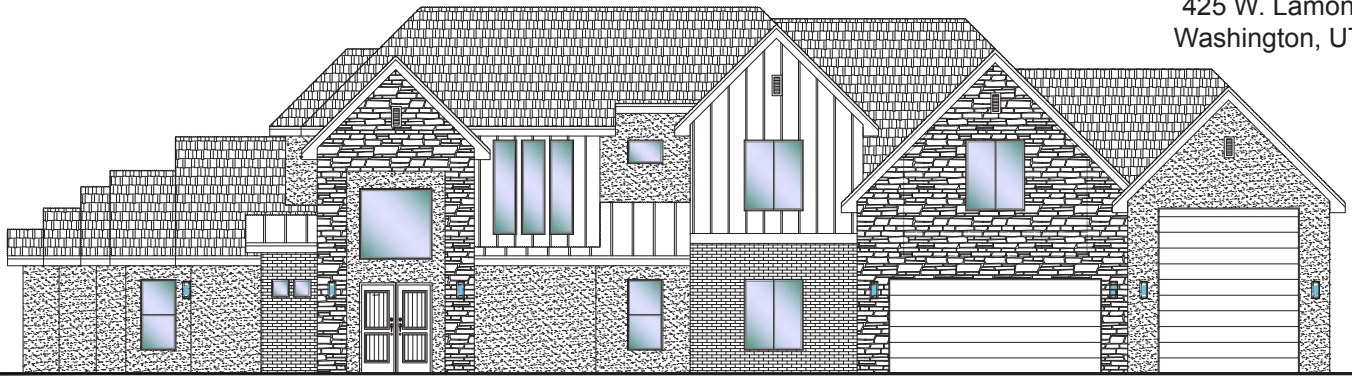
#18 - FOR SALE*

5 Bed+Casita | 4.5 Bath | 3 Car-RV Garage

S&S Homes

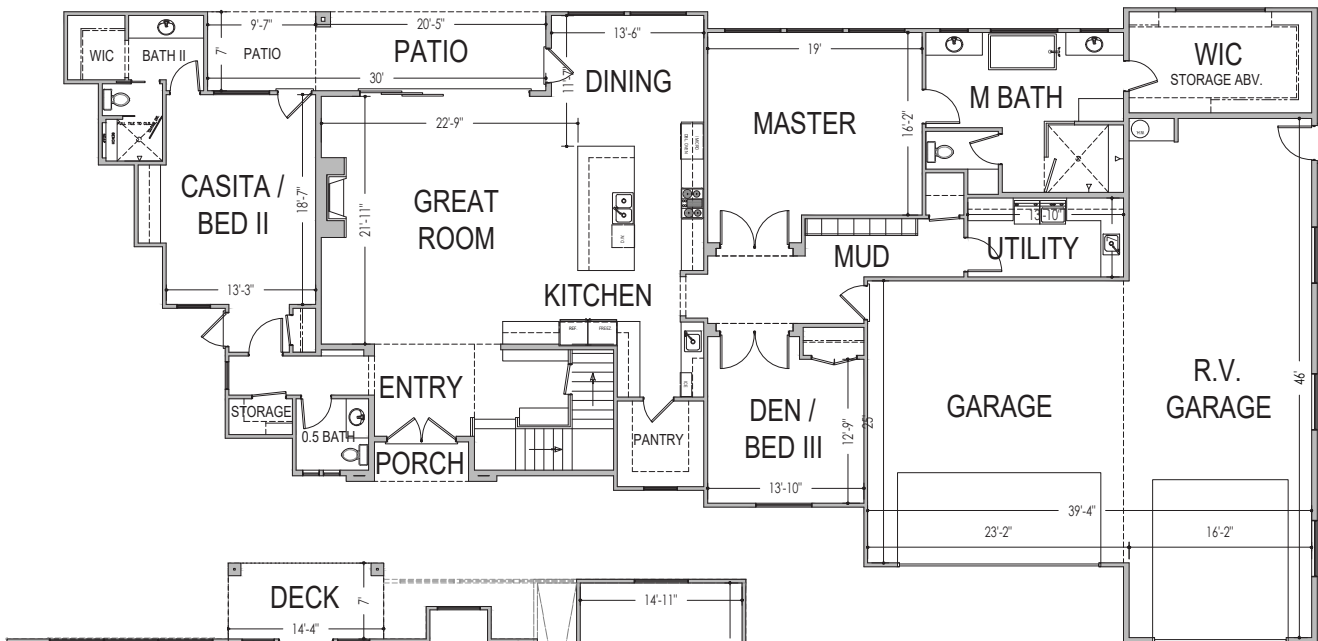
www.sshomes.info

425 W. Lamond Circle
Washington, UT 84780

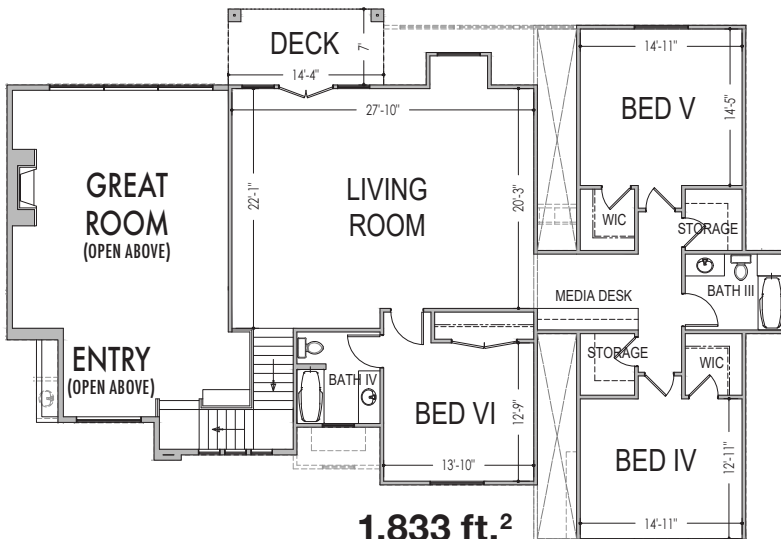


111'x56'

4,892 ft.²



3,059 ft.²



1,833 ft.²

*Prices, estimated completion dates, elevations, styles, colors, features, and finished homes may vary from the architectural rendering and are subject to change without notice or obligation. *Square footage is estimated. [Scan QR CODE for more information on available homes and neighborhoods.](#)



Agent: Shae Leonard
(435)668-3096 - shae@ssrealtysolutions.com





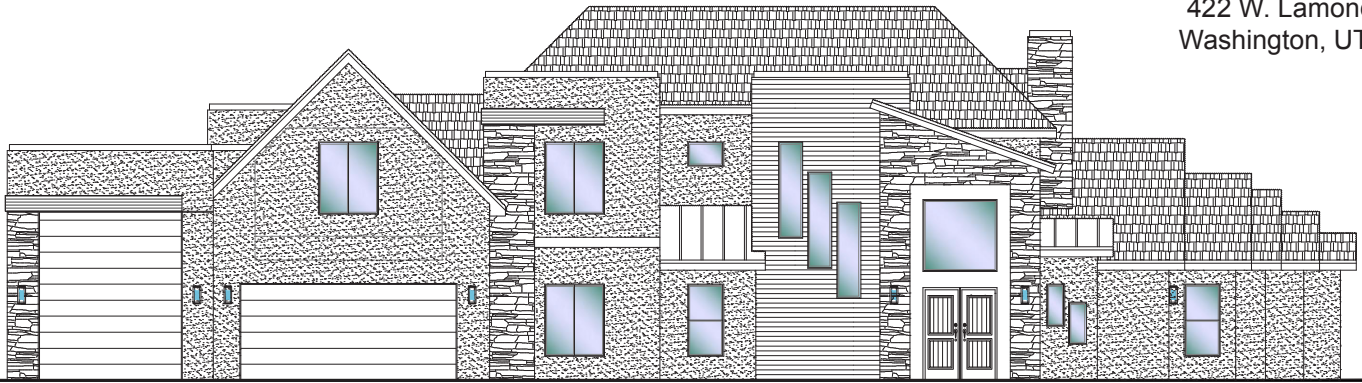
#21 - FOR SALE*

5 Bed+Casita | 4.5 Bath | 3 Car-RV Garage

S&S Homes

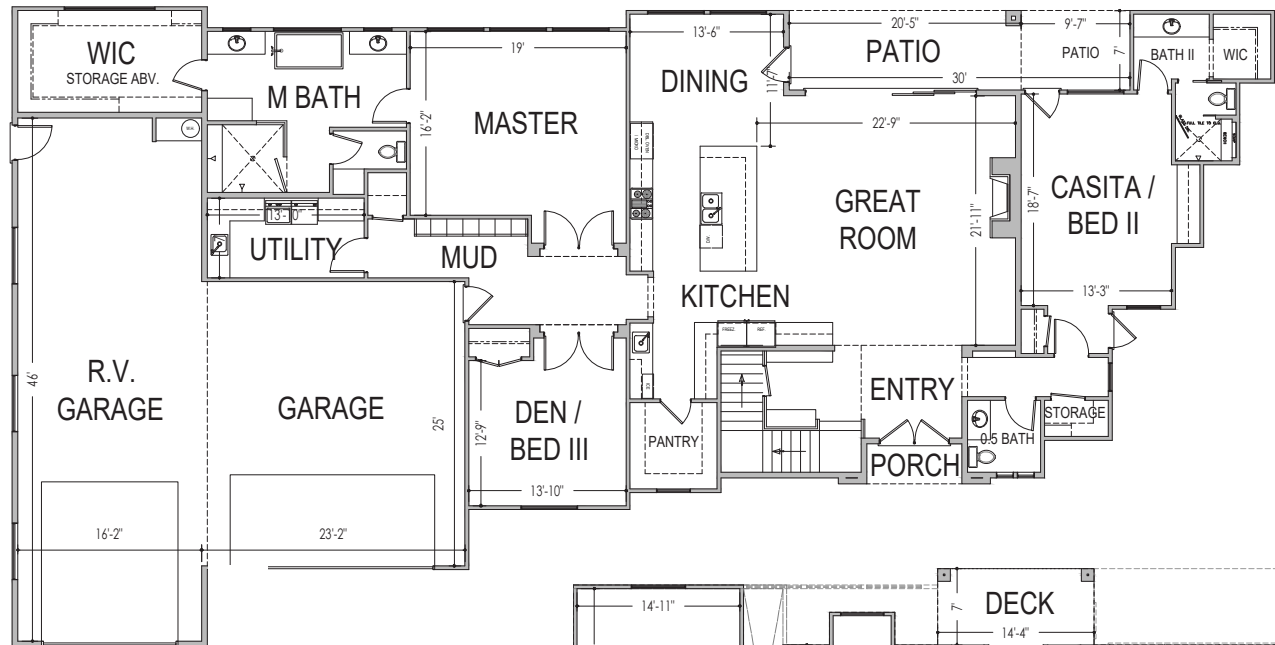
www.sshomes.info

422 W. Lamond Circle
Washington, UT 84780

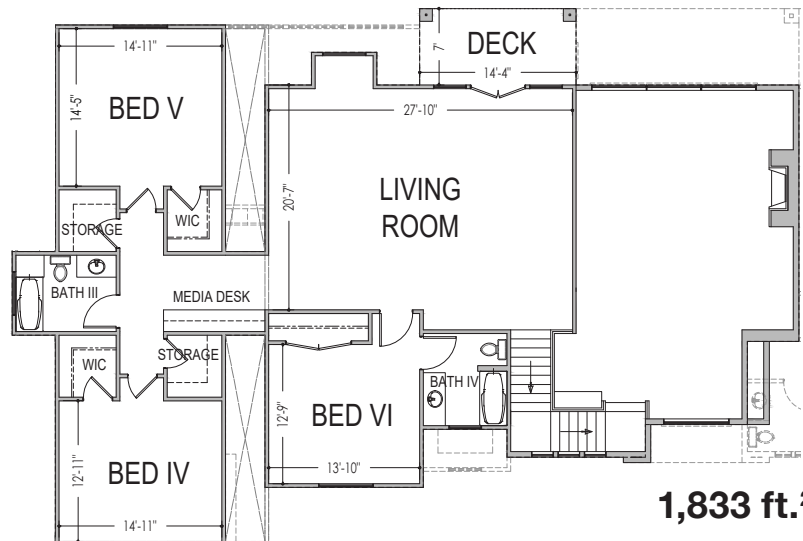


111'x56'

4,892 ft.²



3,059 ft.²



1,833 ft.²

*Prices, estimated completion dates, elevations, styles, colors, features, and finished homes may vary from the architectural rendering and are subject to change without notice or obligation. *Square footage is estimated. [Scan QR CODE for more information on available homes and neighborhoods.](#)



Agent: Shae Leonard
(435)668-3096 - shae@ssrealtysolutions.com



MLS



S&S Realty
SOLUTIONS





#37 - FOR SALE*

5 Bed | 4.5 Bath | 2 Gr. Rms. | 3 Car-RV Garage

S&S Homes

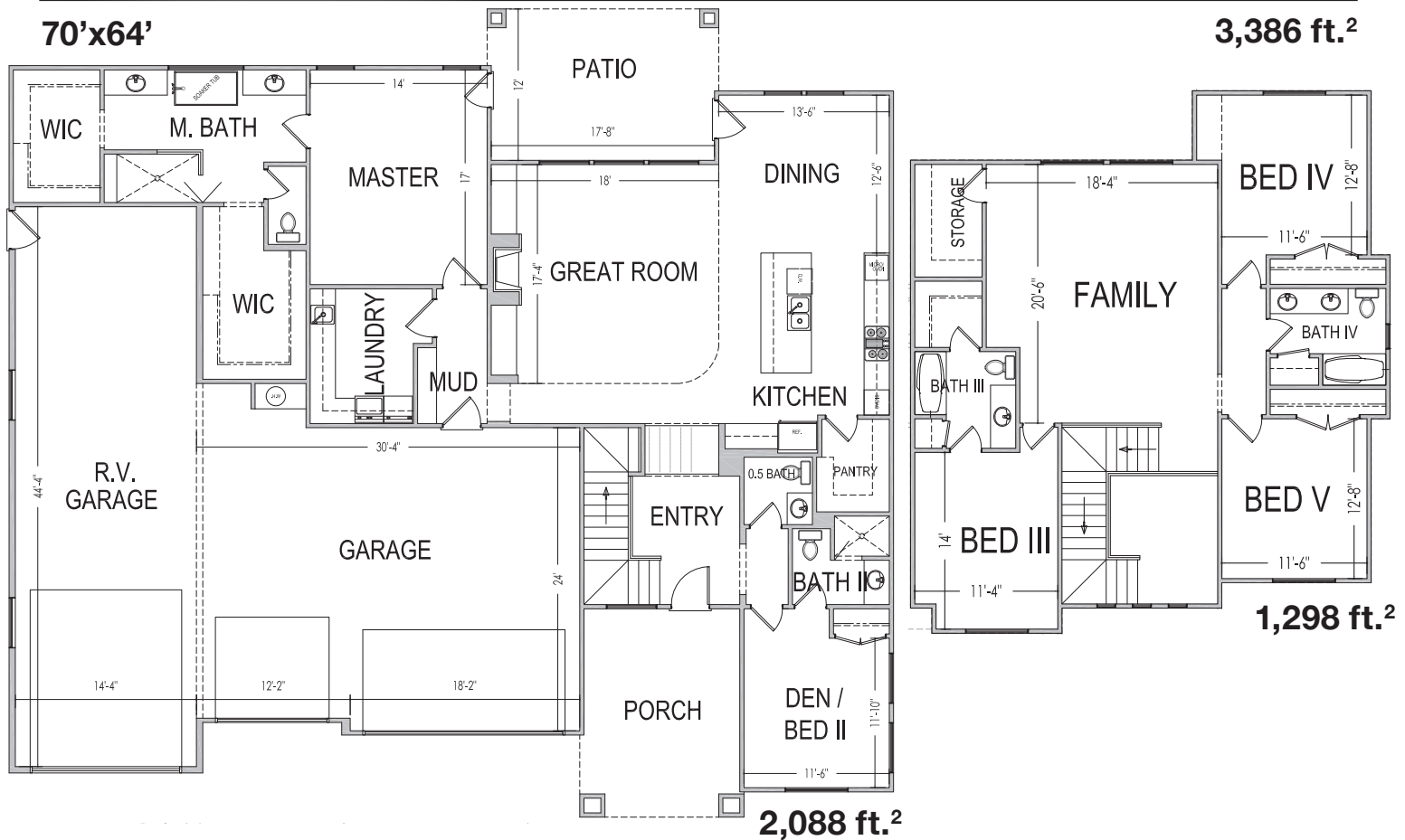
www.sshomes.info

2832 S. Woodrow Lane
Washington, UT 84780



70'x64'

3,386 ft.²



*Prices, estimated completion dates, elevations, styles, colors, features, and finished homes may vary from the architectural rendering and are subject to change without notice or obligation. *Square footage is estimated. [Scan QR CODE for more information on available homes and neighborhoods.](#)



Agent: Shae Leonard
(435)668-3096 - shae@ssrealtysolutions.com



MULTIPLE LISTING SERVICE
MLS



S&S Realty
SOLUTIONS





#44 - FOR SALE*
 5 Bed+Den | 4.5 Bath | 2 Gr. Rms | 3 Car-RV Garage

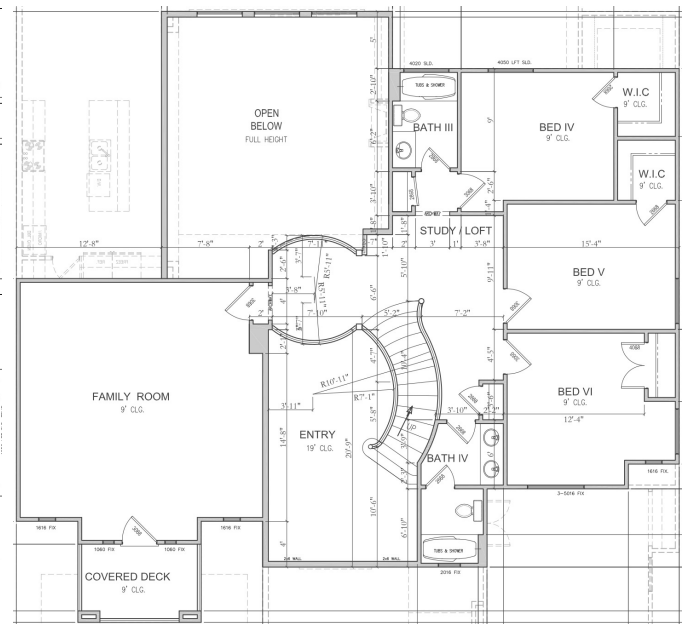
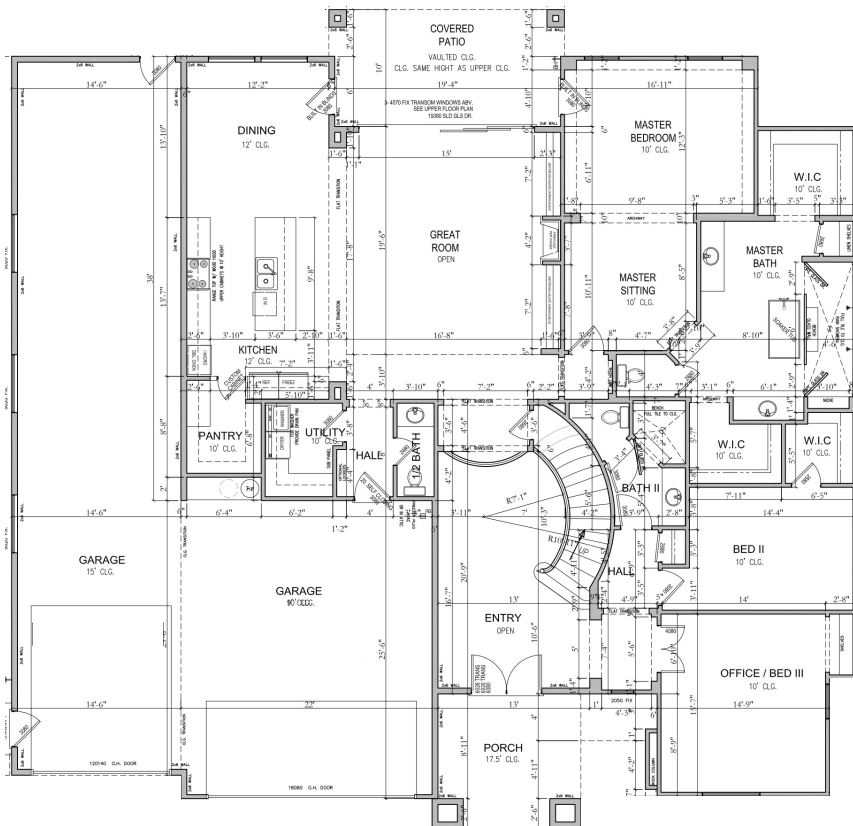
S&S Homes
 www.sshomes.info

469 W Lanz Circle
 Washington, UT 84780



72'x70'

4,300 ft.²



1,547 ft.²

2,753 ft.²

*Prices, estimated completion dates, elevations, styles, colors, features, and finished homes may vary from the architectural rendering and are subject to change without notice or obligation. *Square footage is estimated. [Scan QR CODE for more information on available homes and neighborhoods.](#)



Agent: Shae Leonard
 (435)668-3096 - shae@ssrealtysolutions.com





#45 - FOR SALE*
4 Bed+Den | 3.5 Bath | 3 Car-RV Garage

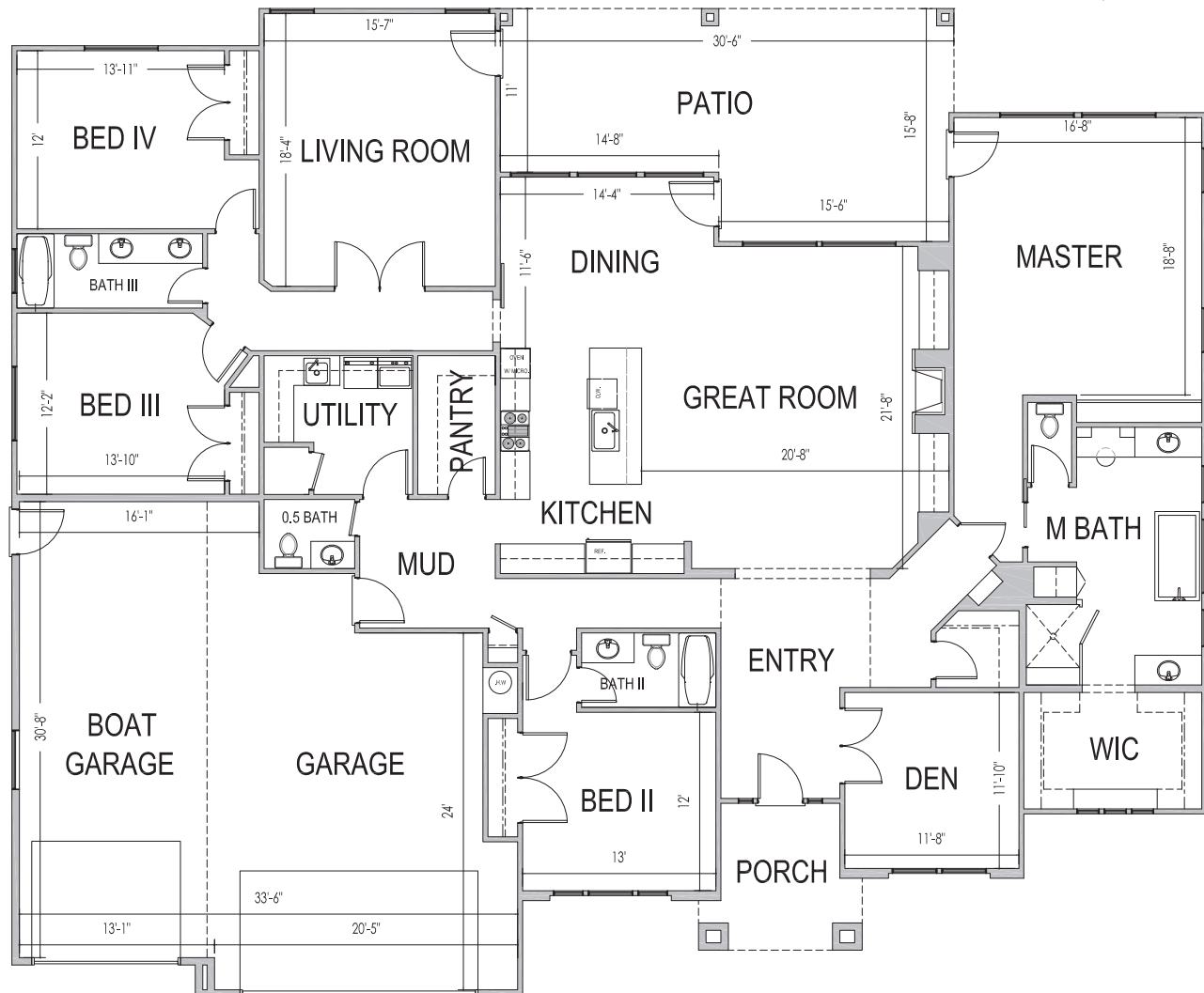
S&S Homes
www.sshomes.info

451 W Lanz Circle
Washington, UT 84780



80'x66'

3,350 ft.²



*Prices, estimated completion dates, elevations, styles, colors, features, and finished homes may vary from the architectural rendering and are subject to change without notice or obligation. *Square footage is estimated. [Scan QR CODE for more information on available homes and neighborhoods.](#)



Agent: Shae Leonard
(435)668-3096 - shae@ssrealtysolutions.com



MULTIPLE LISTING SERVICE
MLS



S&S Realty
SOLUTIONS

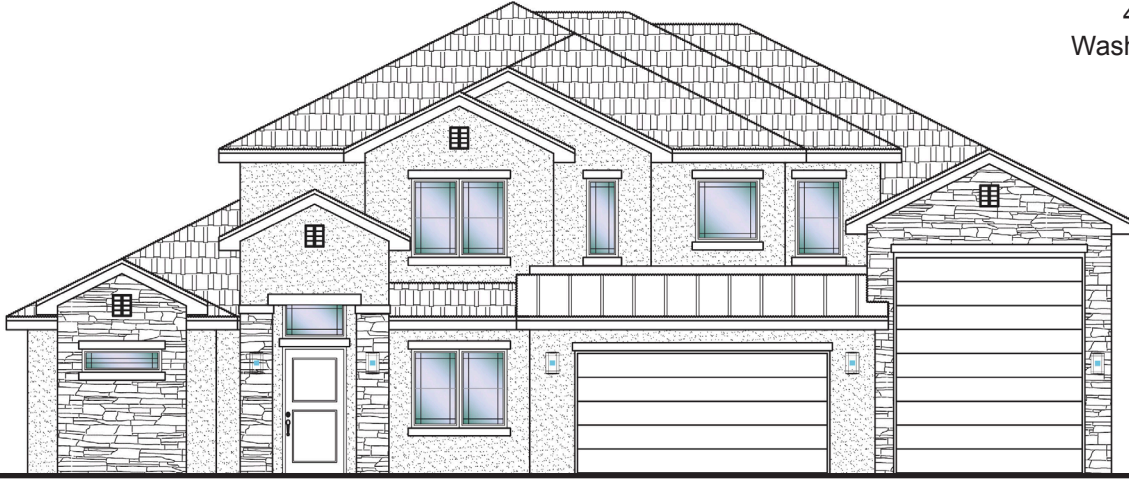




#50 - FOR SALE*
5 Bed+Den | 5 Bath | 3 Car-RV Garage

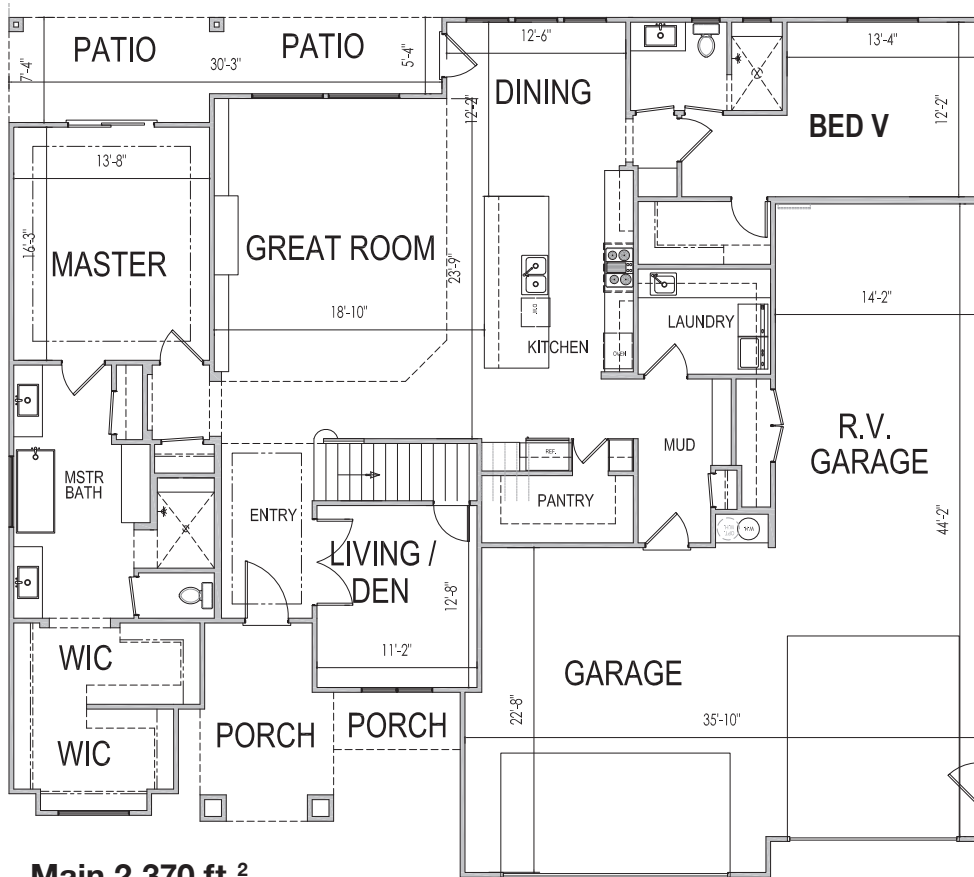
S&S Homes
www.sshomes.info

444 W Lanz Circle
Washington, UT 84780

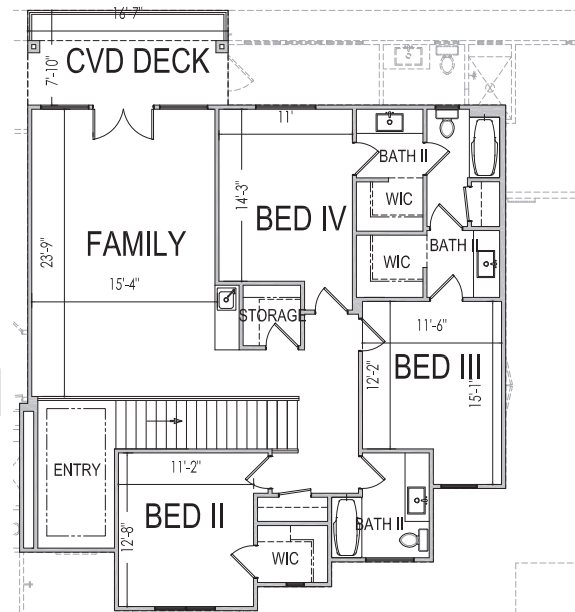


68'x63'

3,790 ft.²



Upper 1,420 ft.²



*Prices, estimated completion dates, elevations, styles, colors, features, and finished homes may vary from the architectural rendering and are subject to change without notice or obligation. *Square footage is estimated. [Scan QR CODE for more information on available homes and neighborhoods.](#)



Agent: Shae Leonard
(435)668-3096 - shae@ssrealtysolutions.com



MULTIPLE LISTING SERVICE
MLS



S&S Realty
SOLUTIONS

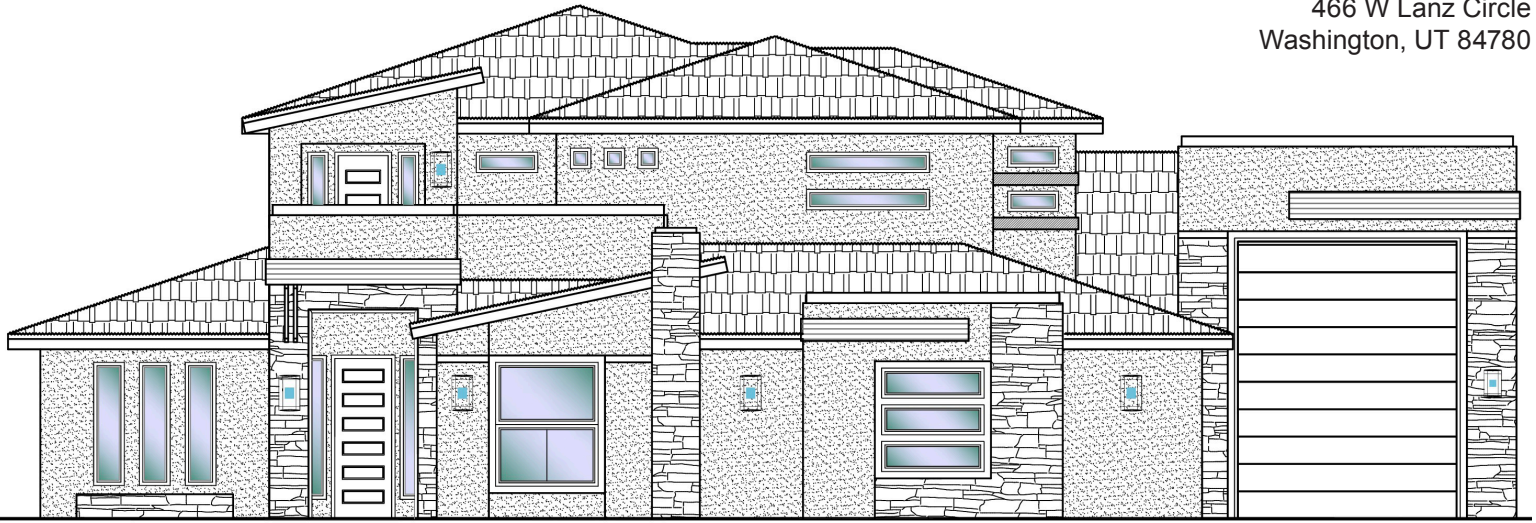




#51 - FOR SALE*
 6 Bed+Den+Flex | 4.5 Bath | 3 Car-RV Garage

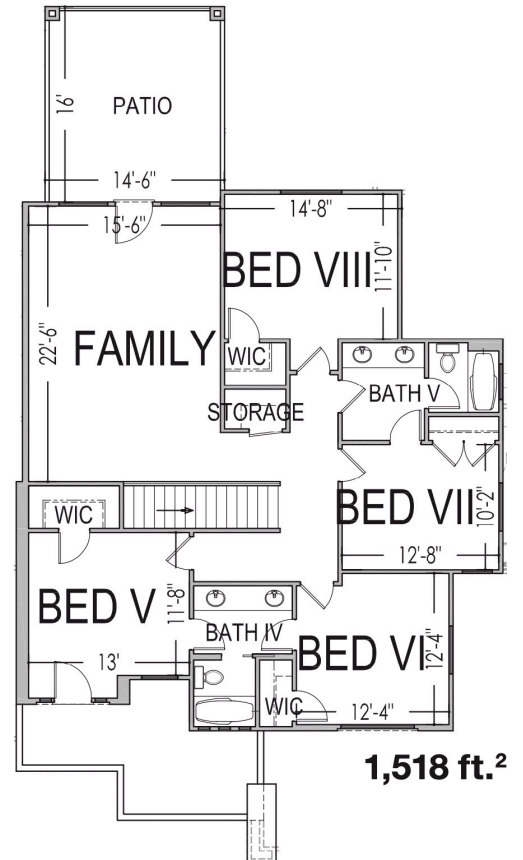
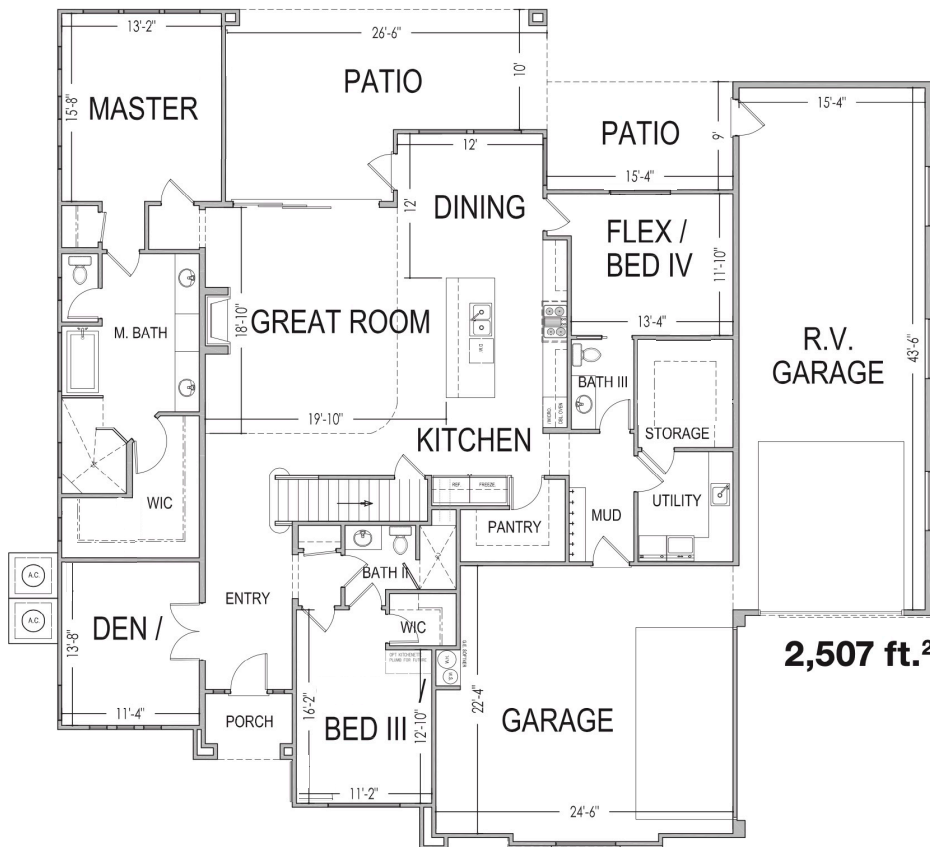
S&S Homes
 www.sshomes.info

466 W Lanz Circle
 Washington, UT 84780



72'x70'

4,025 ft.²



*Prices, estimated completion dates, elevations, styles, colors, features, and finished homes may vary from the architectural rendering and are subject to change without notice or obligation. *Square footage is estimated. [Scan QR CODE for more information on available homes and neighborhoods.](#)



Agent: Shae Leonard
 (435)668-3096 - shae@ssrealtysolutions.com





HOME OWNER'S ASSOCIATION



HOA Includes:

Landscape Maintenance of Storm Water Detention Area
Liability Insurance
Administration / Management

Annual Total \$250.00

*This list includes some but not all items covered by your HOA dues.

Payable to:

Franklin Fields HOA
201 E St George Boulevard
St. George, UT 84770
(435) 628-3950



At the time of purchase (one-time fee):

New Buyer Administration Fee..... \$50

*Prices, estimated completion dates, elevations, styles, colors, features, and finished homes may vary from the architectural rendering and are subject to change without notice or obligation. *Square footage is estimated. [Scan QR CODE for more information on available homes and neighborhoods.](#)



Agent: Shae Leonard
(435)668-3096 - shae@ssrealtysolutions.com

