



DESERT CLIFFS

# NEW HOMES FOR SALE

With Estimated Pricing and Completion Dates\*

03/19/2025

# S&S Homes

www.sshomes.info

LOT#	SQ. FT.	LEVELS	BEDS	BATHS	GARAGE	EST. DATE*	FOR SALE
300	3504	2	5+Den	4	3 Car	MIR* + (Staged)	\$813,900*
305	2459	1	3+Full Casita	3	3 Car	Move-In-Ready*	\$728,900*
306	2983	2	5	4	3 Car	Move-In-Ready*	\$812,900*
322	2524	1	4	3	3 Car-RV	Move-In-Ready*	\$698,900*
323	2594	1	3	2.5	3 Car	MIR* + (Staged)	\$693,900*

## TAKE A SELF TOUR OF OUR HOMES WITH NTERNOW. SCAN HERE TO LEARN HOW:



### STANDARD FEATURES

#### INTERIOR

- **GE Stainless Steel Appliances:** Dishwasher, Microwave, Free Standing Range
- Energy Saving LED Light Bulbs
- Designer Selected Granite Counter Tops (3 cm Thick)
- Stained Knotty Alder Wood Cabinets
- 36" Tall Base Cabinets
- Soft Close Cabinet Doors and Drawer Guides
- Under-Mount Stainless Steel Kitchen Sink with Garbage Disposal
- 18" Tile Kitchen Back Splash
- Pull Down Delta Essa® Kitchen Faucet
- Delta® Modern Chrome Faucets Throughout
- Tile Shower & Tub Surrounds with Deco Accent Tile
- Toilet Paper Holders & Towel Bars
- Elongated Toilets in All Baths
- Full Width Mirrors Above Vanity
- Luxury Vinyl Plank in Entry, Kitchen, Baths, Utility Room, Hallways
- Decora Light Switches
- Ceiling Fan Pre-wire in all Bedrooms and Living Rooms
- Trim - 5" Base, 3" Case
- Two-Tone Paint Throughout Home (Garage One-Tone Only)
- Elevated Ceilings (as included on floor plan)

#### EXTERIOR

- **95% Gas Furnace and 14 SEER A/C Dual Fuel:** Above Industry Standard of 80% Furnace
- 50 Gallon Water Heater
- Insulation: R-15 Walls & R-38 Ceiling
- 1" Foam Insulation Thermal/Moisture Barrier on Exterior Walls

- Adding R-4 to Insulation increasing up to R-19
- **Front & Rear Yard Professional Landscaping**
- **Partial Rear Yard Cinder Block Walls**
- Dead Bolt Locks on All Exterior Doors
- Synthetic Stucco Finish Coat
- Cultured Stone Accents (As per Plan Elevation)
- Rain Gutters
- Border Accents on Driveway
- Fire Rated Garage Entry Door
- Low Energy Dual Pane Exterior Vinyl Windows
- Fire Resistant Flat Cement Roof Tiles (per Elevation)
- Pre-Plumbed Soft Water Loop
- 8' Designer Selected Insulated Garage Doors With Openers

#### CONNECTIVITY

- Video Doorbell with iOS/Android Support
- Smart Door Lock with Keypad
- Smart Garage Door Opener
- Smart Programmable Thermostat
- Fiber Optic Cable Run into Oversized Interior Low Voltage Panel
- Prewire or Sleeved for Cable, Phone Service and Satellite
- Ethernet and TV Drops run to Great Room(s) and Bedrooms
- Fiber Optic Internet Community
- Prewire for 5.1 Surround Sound in Living Room

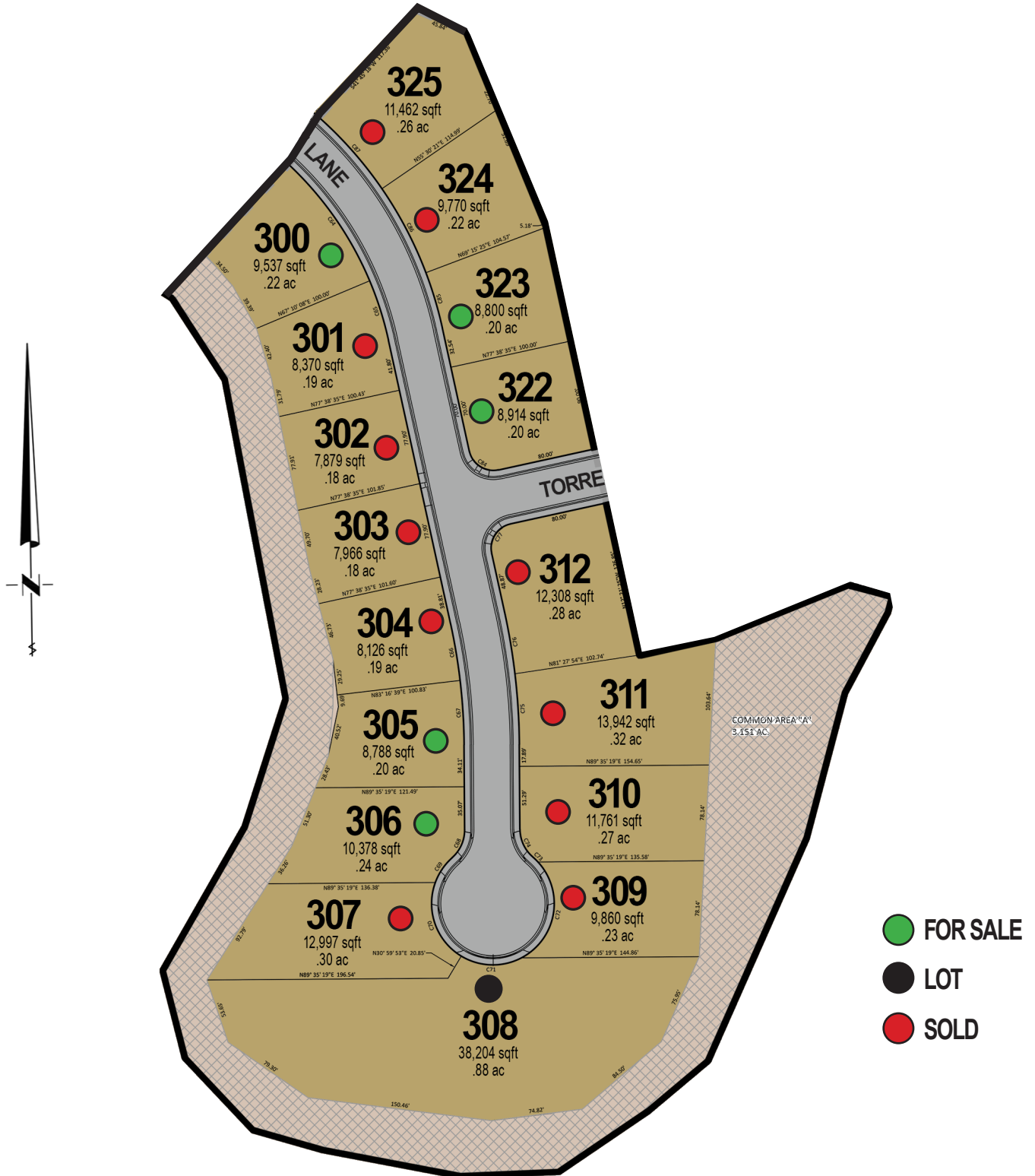
\*Prices, estimated completion dates, elevations, styles, colors, features, and finished homes may vary from the architectural rendering and are subject to change without notice or obligation. \*Square footage is estimated. [Scan QR CODE for more information on available homes and neighborhoods.](#)



**Agent: Shae Leonard**  
(435)668-3096 - shae@ssrealtysolutions.com



**PLAT MAP**



\*Prices, estimated completion dates, elevations, styles, colors, features, and finished homes may vary from the architectural rendering and are subject to change without notice or obligation. \*Square footage is estimated. [Scan QR CODE for more information on available homes and neighborhoods.](#)



**Agent: Shae Leonard**  
 (435)668-3096 - [shae@ssrealtysolutions.com](mailto:shae@ssrealtysolutions.com)





**DESERT  
CLIFFS**

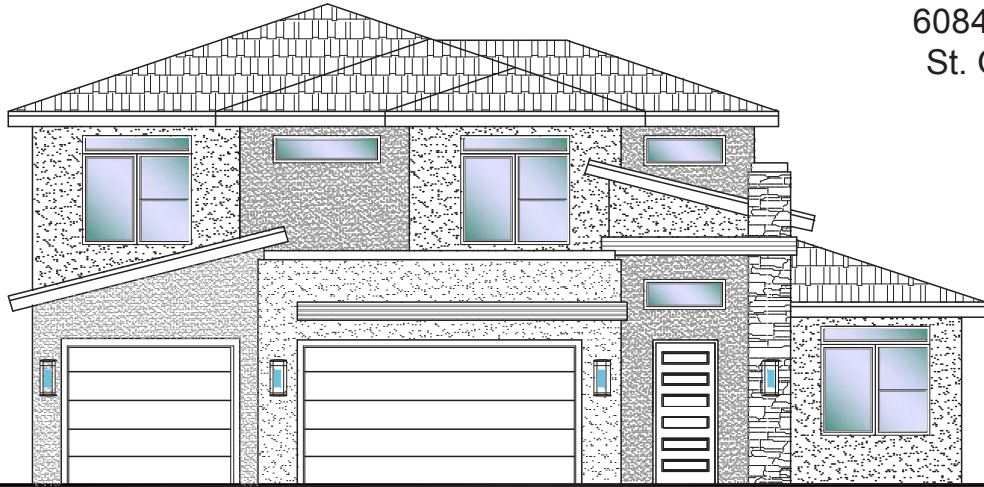
**#300 - FOR SALE\***

5 Bed+Den | 4 Bath | 3 Car Garage

**S&S Homes**

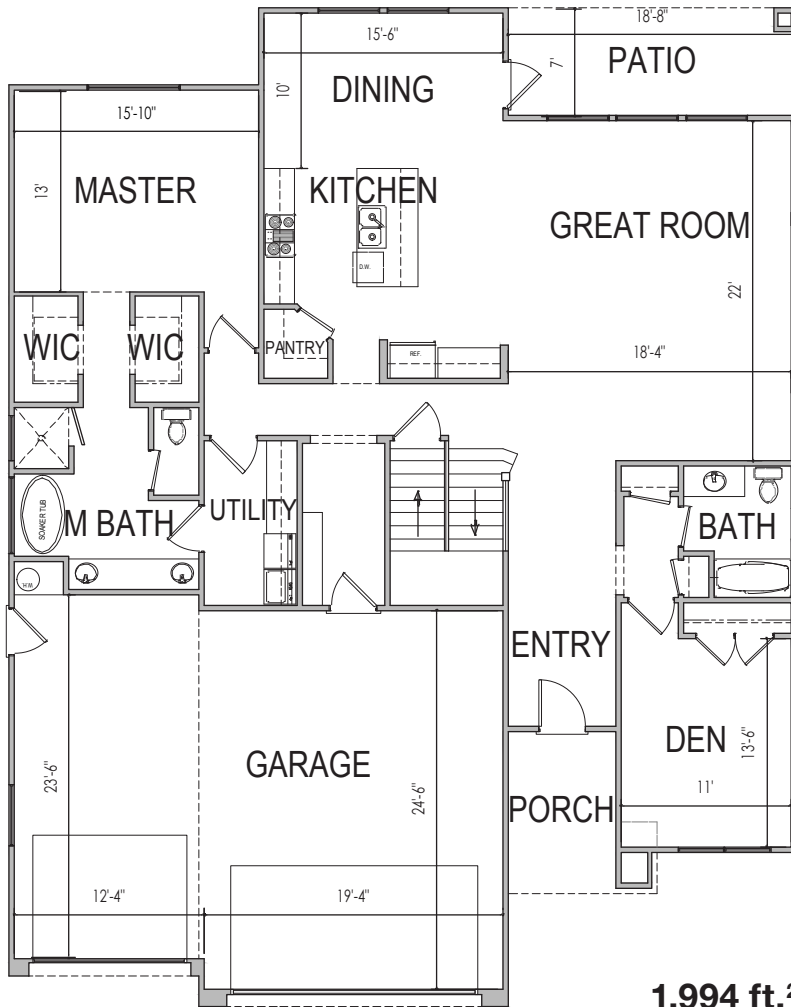
www.sshomes.info

6084 S. Half Dome Ln.  
St. George, UT 84790

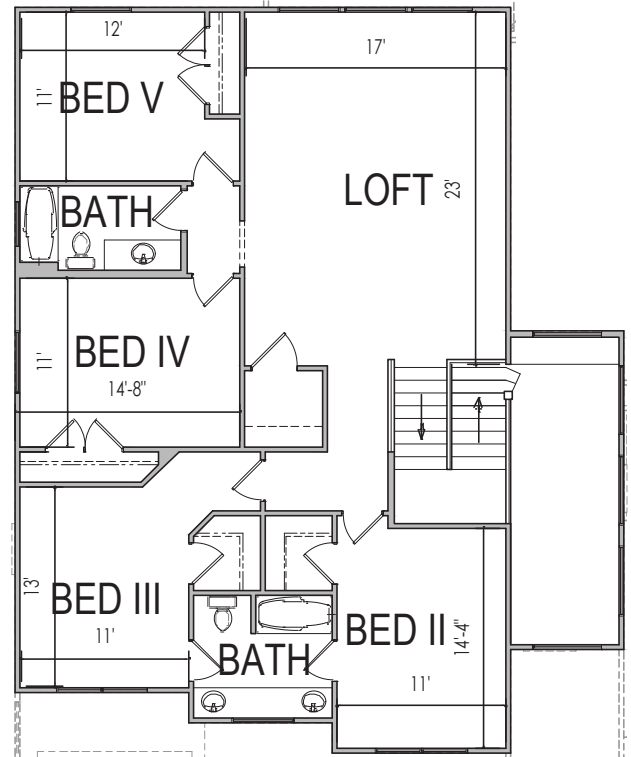


**51'x65'**

**3,504 ft.<sup>2</sup>**



**1,994 ft.<sup>2</sup>**



**1,510 ft.<sup>2</sup>**

\*Prices, estimated completion dates, elevations, styles, colors, features, and finished homes may vary from the architectural rendering and are subject to change without notice or obligation. Square footage is estimated. Scan, Download & Register for free in the NoviHome App for more information on all our homes and neighborhoods.



**Agent: Shae Leonard**  
(435)668-3096 - shae@ssrealtysolutions.com



MULTIPLE LISTING SERVICE  
**MLS**



**S&S Realty**  
SOLUTIONS



**DESERT  
CLIFFS**

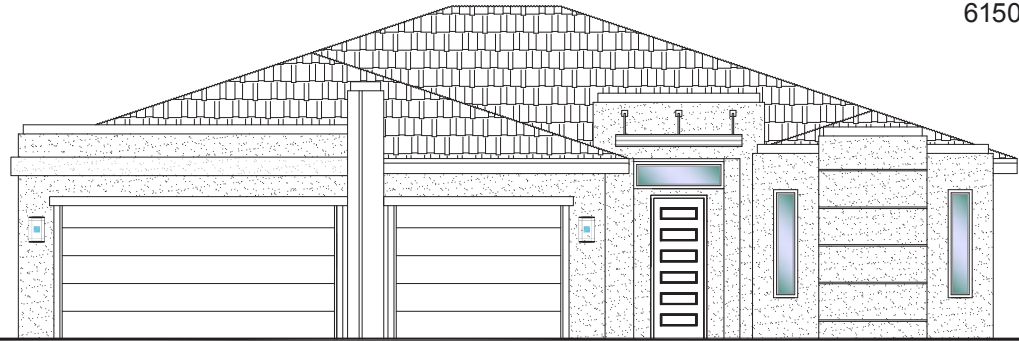
**#305 - FOR SALE\***

3 Bed+Full Casita | 3 Bath | 3 Car Garage

**S&S Homes**

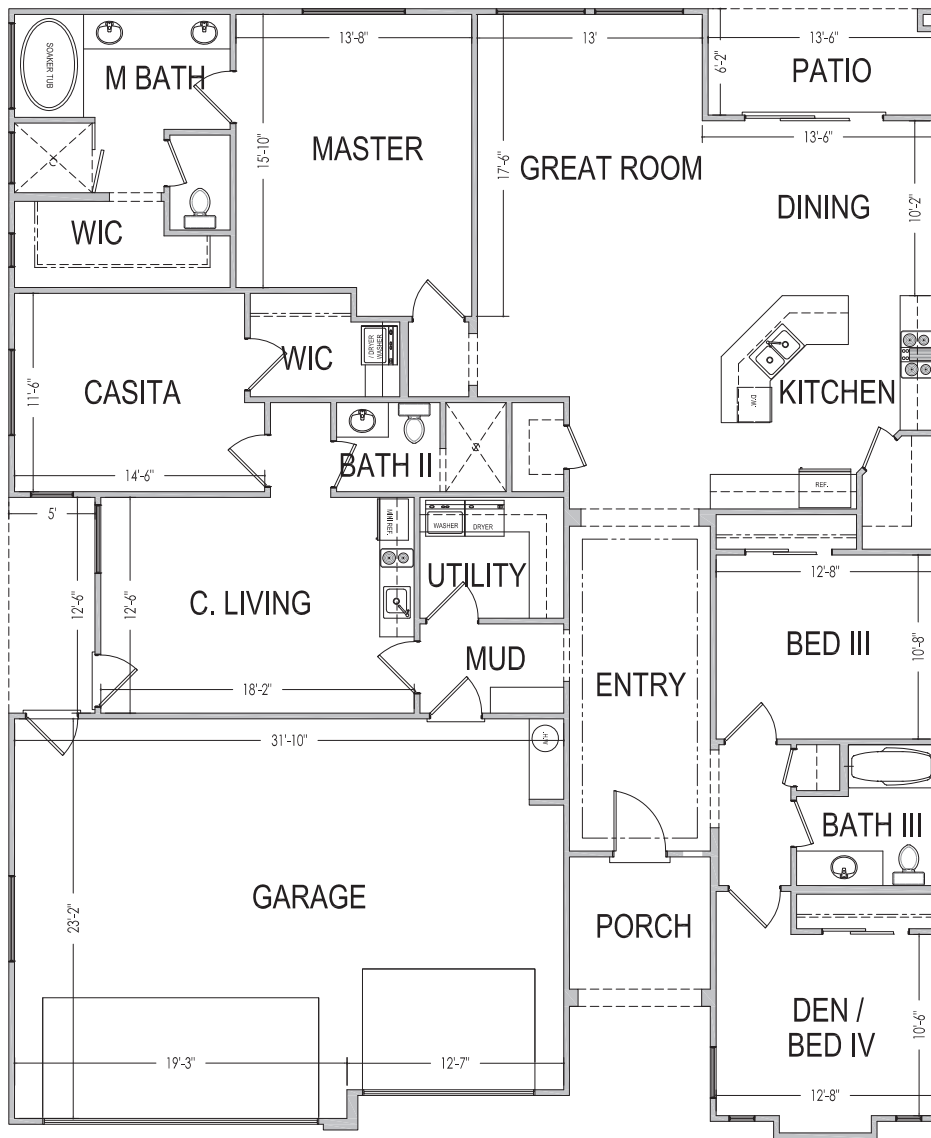
www.sshomes.info

6150 S White Dome Circle  
St George, UT 84790



**54'x65'**

**2,459 ft.<sup>2</sup>**



\*Prices and estimated completion dates are subject to change without notice or obligation. Finished homes may vary from the architectural rendering. Square footage is estimated. Scan, Download & Register for free in the NoviHome App for more information on all our homes and neighborhoods.



**Agent: Shae Leonard**  
(435)668-3096 - shae@ssrealtysolutions.com



MULTIPLE LISTING SERVICE  
**MLS**



**S&S Realty**  
SOLUTIONS



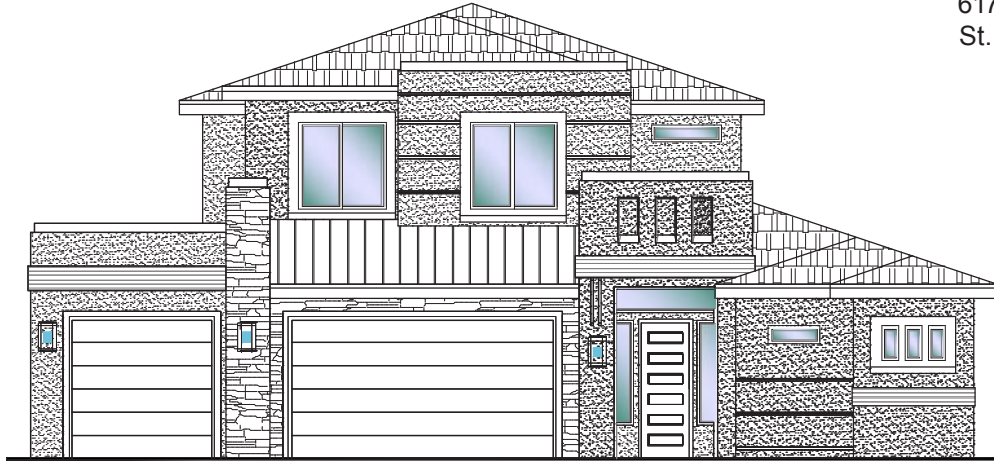
**DESERT  
CLIFFS**

**#306 - FOR SALE\***  
5 Bed | 4 Bath | 3 Car Garage

**S&S Homes**

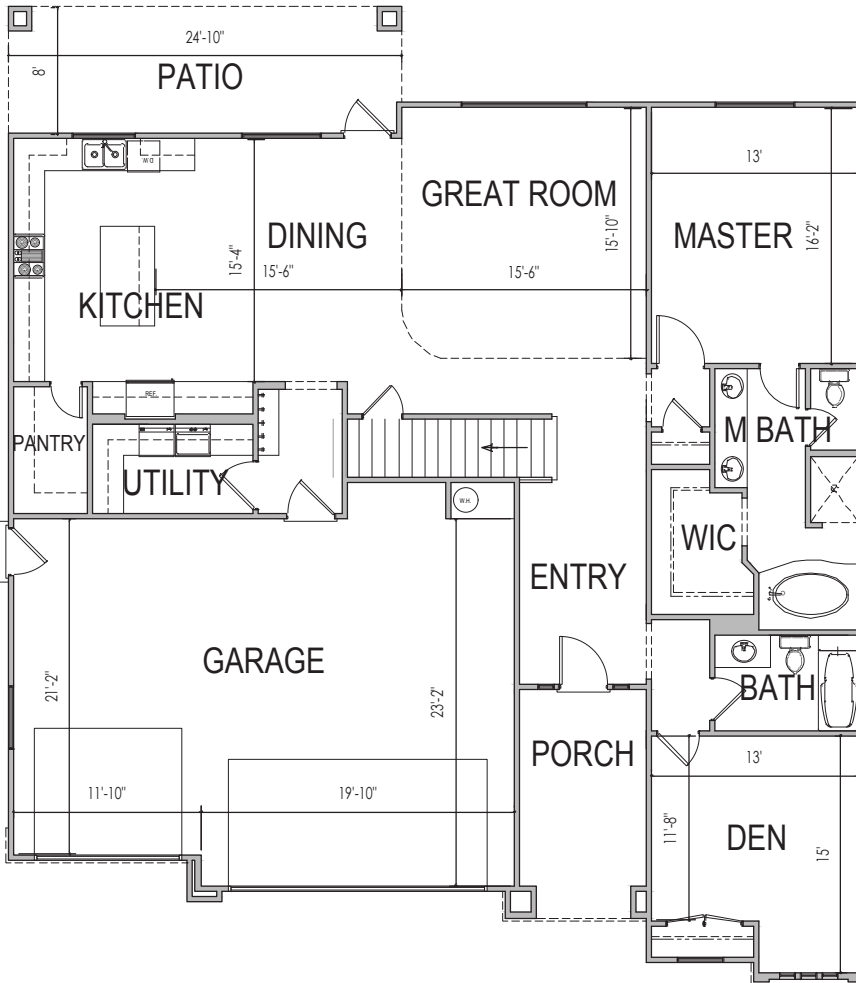
www.sshomes.info

6170 S Half Dome Cir.  
St. George, UT 84790

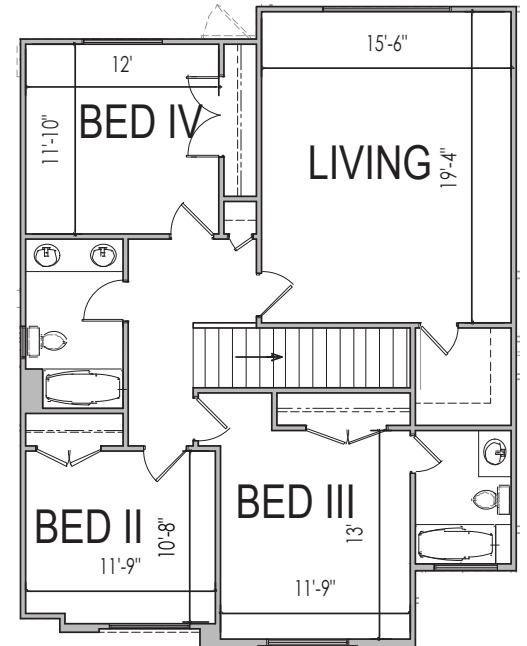


**54'x62'**

**2,983 ft.<sup>2</sup>**



**1,828 ft.<sup>2</sup>**



**1,155 ft.<sup>2</sup>**

\*Prices, estimated completion dates, elevations, styles, colors, features, and finished homes may vary from the architectural rendering and are subject to change without notice or obligation. Square footage is estimated. Scan, Download & Register for free in the NoviHome App for more information on all our homes and neighborhoods.



**Agent: Shae Leonard**  
(435)668-3096 - shae@ssrealtysolutions.com



MULTIPLE LISTING SERVICE  
**MLS**



**S&S Realty**  
SOLUTIONS



**DESERT  
CLIFFS**

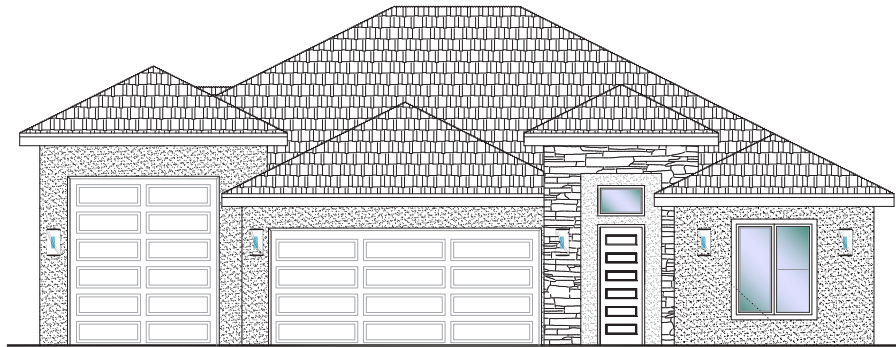
**#322 - FOR SALE\***

4 Bed | 3 Bath | 3 Car-RV Garage

**S&S Homes**

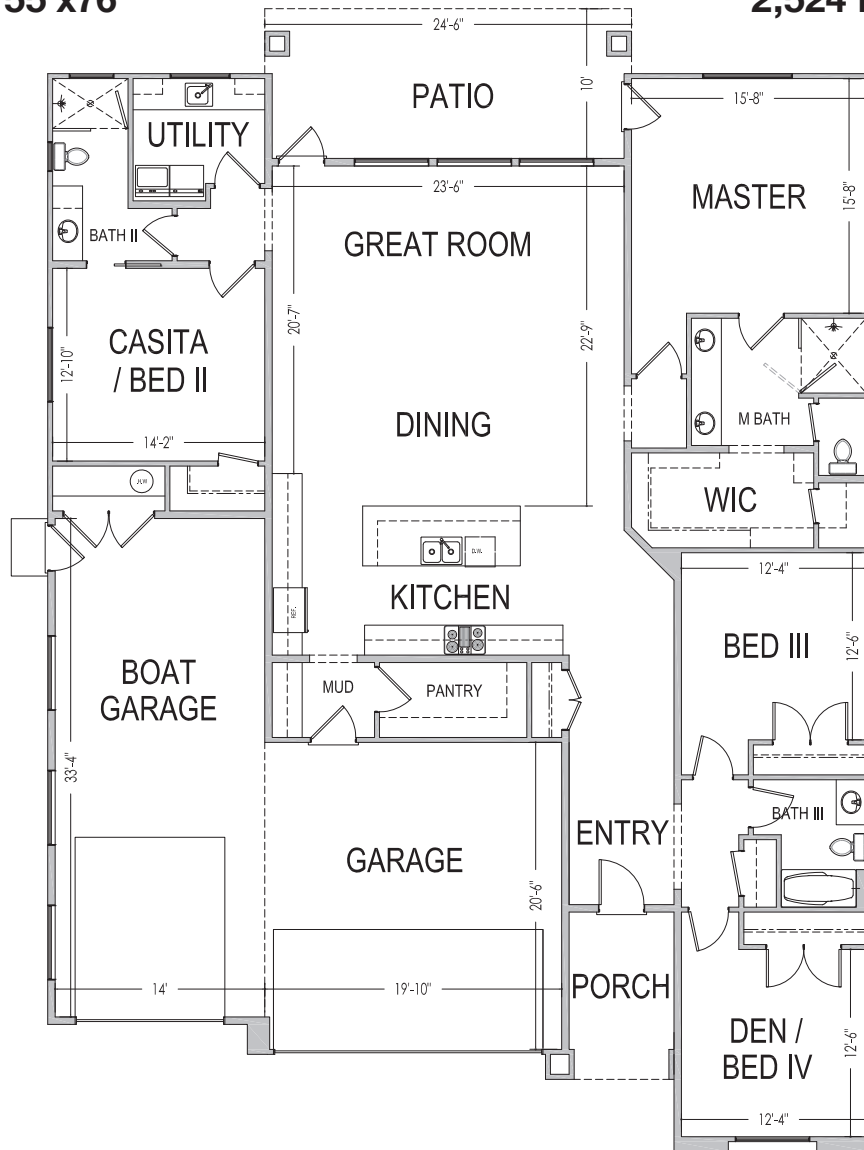
www.sshomes.info

6111 S. Half Dome Dr.  
St. George, UT 84790



**55'x76'**

**2,524 ft.<sup>2</sup>**



\*Prices, estimated completion dates, elevations, styles, colors, features, and finished homes may vary from the architectural rendering and are subject to change without notice or obligation. Square footage is estimated. [Scan, Download & Register for free in the NoviHome App for more information on all our homes and neighborhoods.](#)



**Agent: Shae Leonard**  
(435)668-3096 - shae@ssrealtysolutions.com



MULTIPLE LISTING SERVICE  
**MLS**



**S&S Realty**  
SOLUTIONS



**DESERT  
CLIFFS**

**#323 - FOR SALE\***

3 Bed | 2.5 Bath | 3 Car Garage

**S&S Homes**

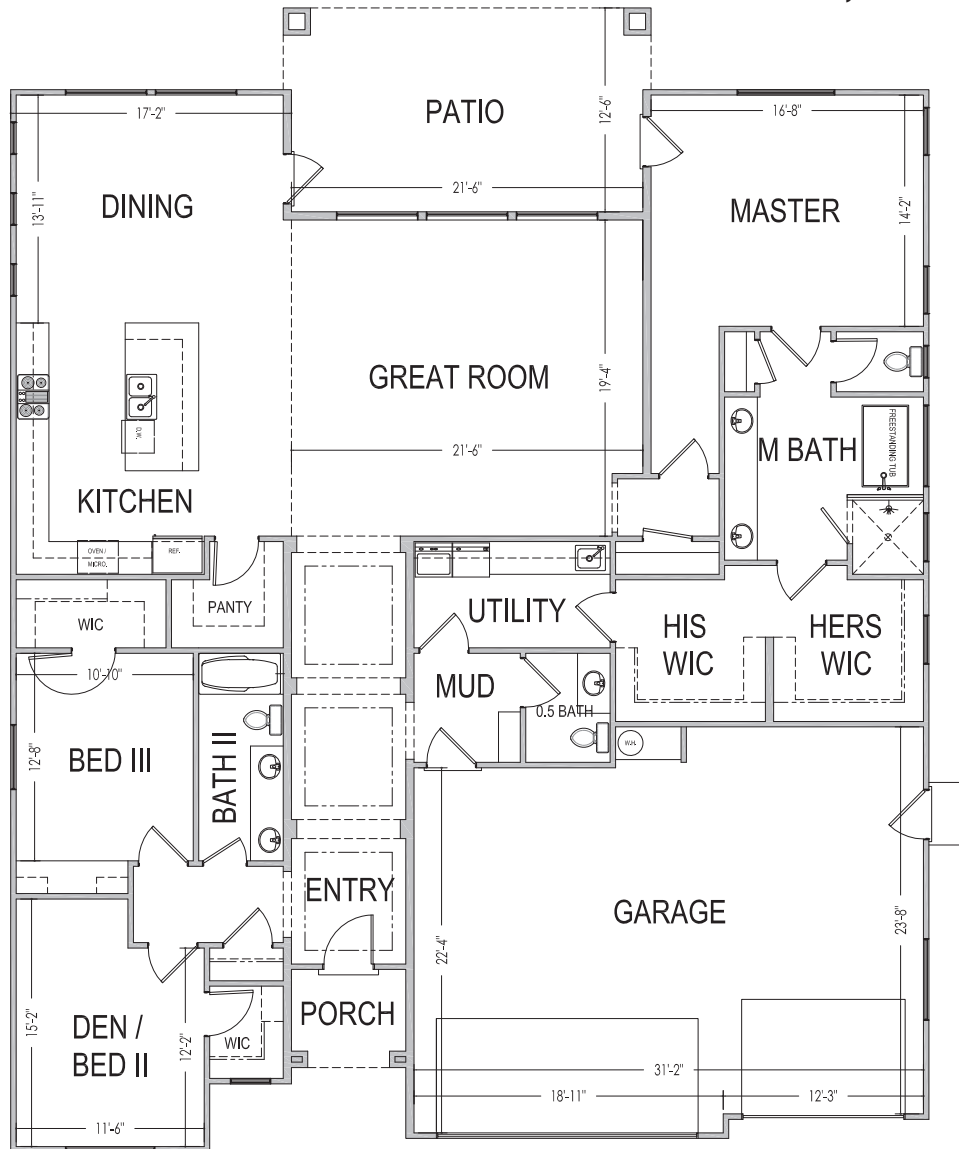
www.sshomes.info

6103 S. Half Dome Dr.  
St. George, UT 84790



56'x70'

2,594 ft.<sup>2</sup>



\*Prices, estimated completion dates, elevations, styles, colors, features, and finished homes may vary from the architectural rendering and are subject to change without notice or obligation. Square footage is estimated. [Scan, Download & Register for free in the NoviHome App for more information on all our homes and neighborhoods.](#)



**Agent: Shae Leonard**  
(435)668-3096 - [shae@ssrealtysolutions.com](mailto:shae@ssrealtysolutions.com)



MULTIPLE LISTING SERVICE  
**MLS**



**S&S Realty**  
SOLUTIONS



**DESERT  
CLIFFS**

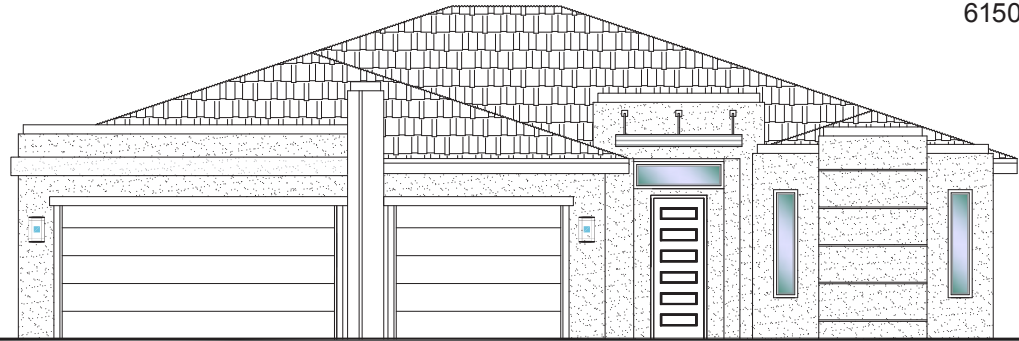
**#305 - FOR SALE\***

3 Bed+Full Casita | 3 Bath | 3 Car Garage

**S&S Homes**

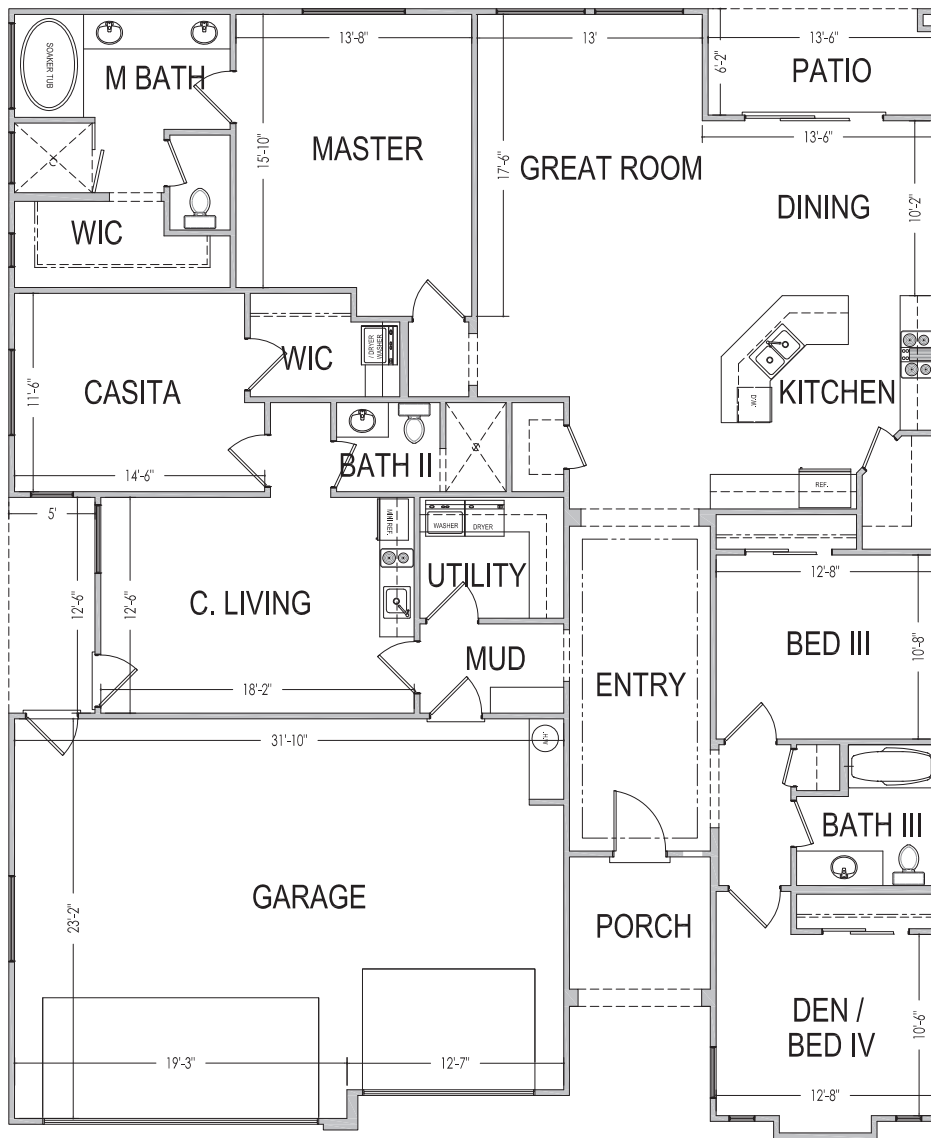
www.sshomes.info

6150 S White Dome Circle  
St George, UT 84790



**54'x65'**

**2,459 ft.<sup>2</sup>**



\*Prices and estimated completion dates are subject to change without notice or obligation. Finished homes may vary from the architectural rendering. Square footage is estimated. Scan, Download & Register for free in the NoviHome App for more information on all our homes and neighborhoods.



**Agent: Shae Leonard**  
(435)668-3096 - shae@ssrealtysolutions.com



MULTIPLE LISTING SERVICE  
**MLS**



**S&S Realty**  
SOLUTIONS





**DESERT  
CLIFFS**

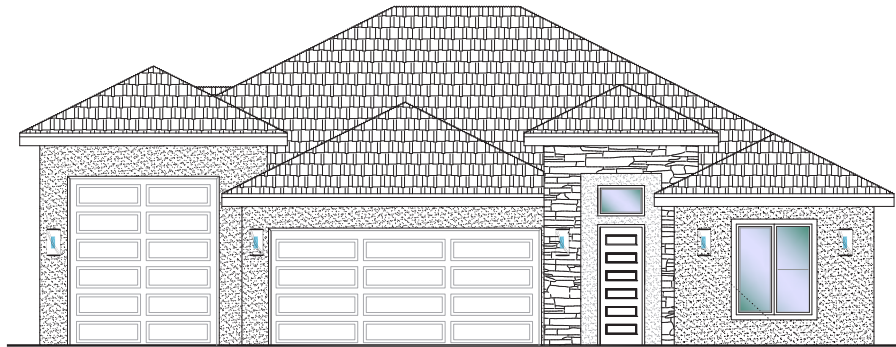
**#322 - FOR SALE\***

4 Bed | 3 Bath | 3 Car-RV Garage

**S&S Homes**

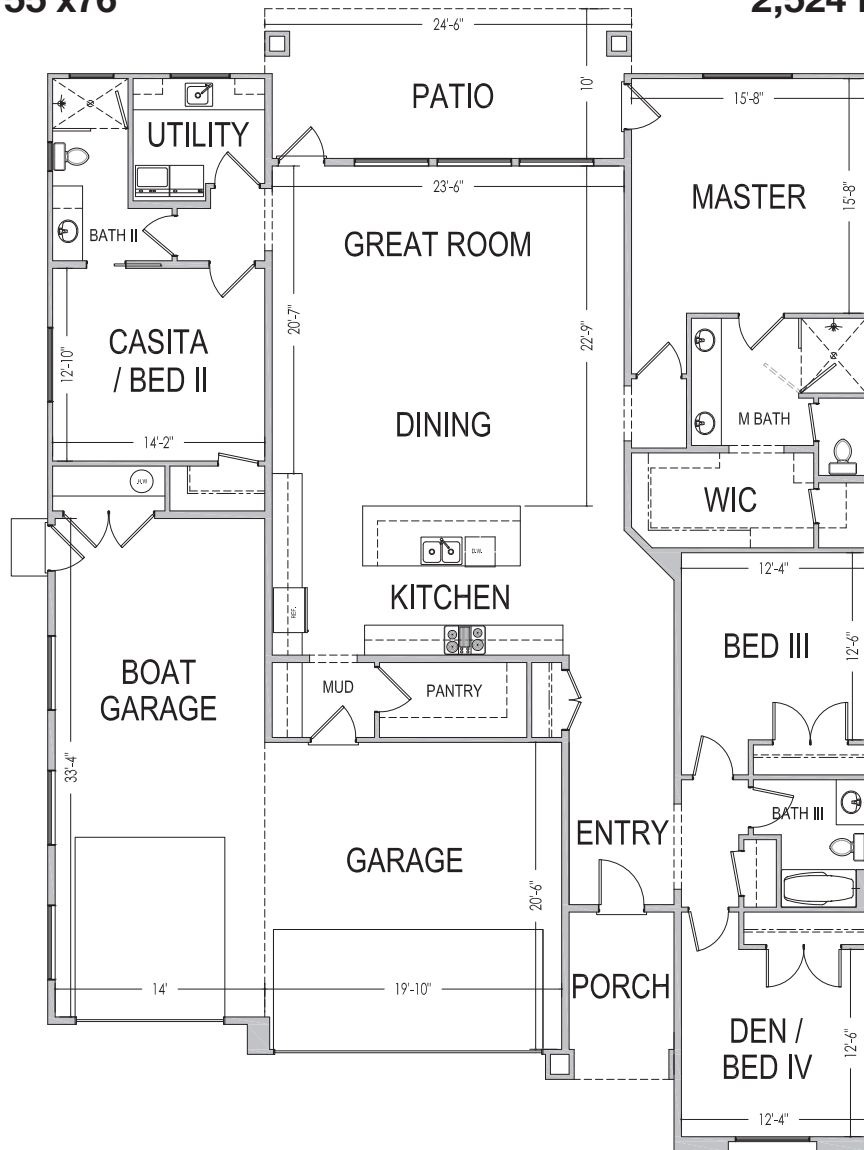
www.sshomes.info

6111 S. Half Dome Dr.  
St. George, UT 84790



55'x76'

2,524 ft.<sup>2</sup>



\*Prices, estimated completion dates, elevations, styles, colors, features, and finished homes may vary from the architectural rendering and are subject to change without notice or obligation. Square footage is estimated. Scan, Download & Register for free in the NoviHome App for more information on all our homes and neighborhoods.



**Agent: Shae Leonard**  
(435)668-3096 - shae@ssrealtysolutions.com



MULTIPLE LISTING SERVICE  
**MLS**



**S&S Realty**  
SOLUTIONS



**DESERT  
CLIFFS**

**#323 - FOR SALE\***  
3 Bed | 2.5 Bath | 3 Car Garage

**S&S Homes**

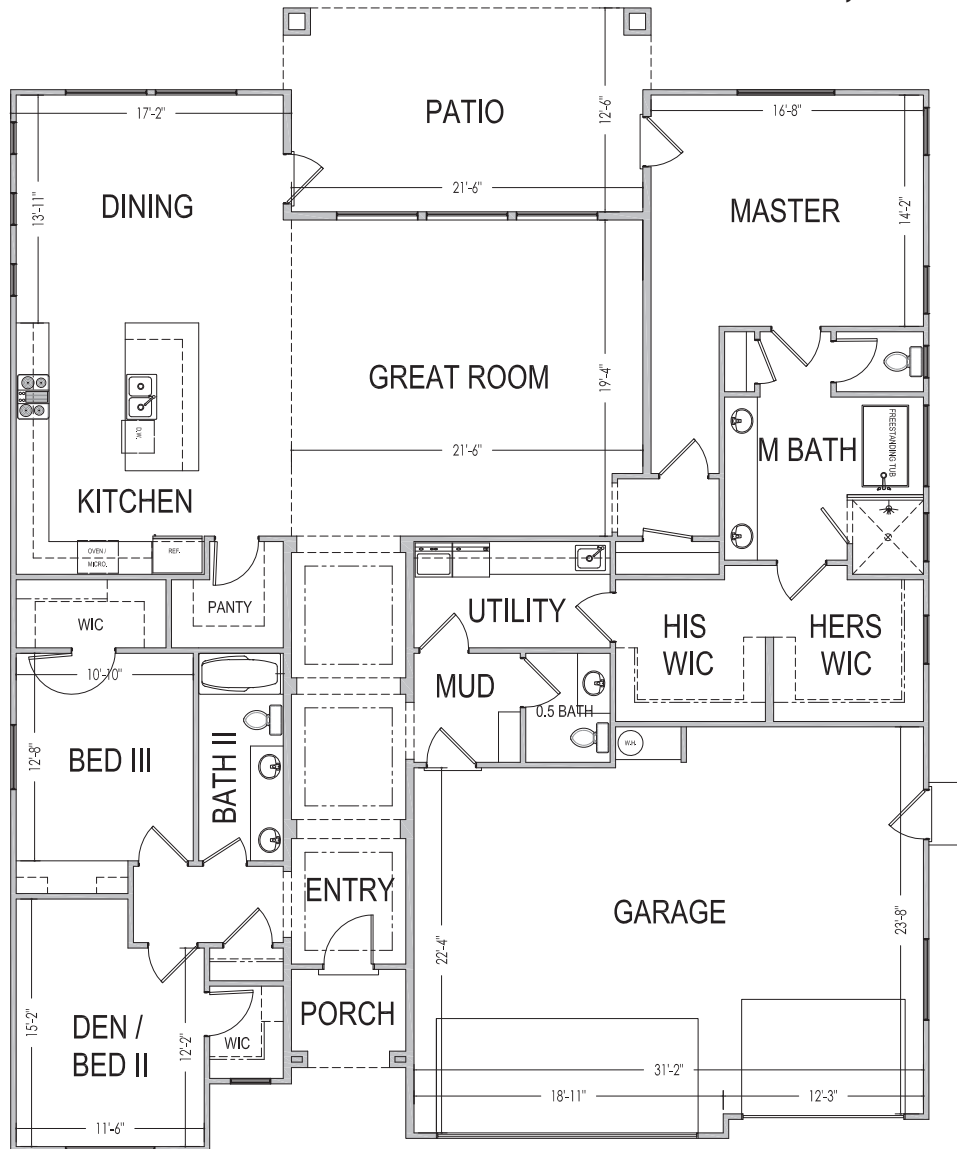
www.sshomes.info

6103 S. Half Dome Dr.  
St. George, UT 84790



56'x70'

2,594 ft.<sup>2</sup>



\*Prices, estimated completion dates, elevations, styles, colors, features, and finished homes may vary from the architectural rendering and are subject to change without notice or obligation. Square footage is estimated. [Scan, Download & Register for free in the NoviHome App for more information on all our homes and neighborhoods.](#)



**Agent: Shae Leonard**  
(435)668-3096 - shae@ssrealtysolutions.com



MULTIPLE LISTING SERVICE  
**MLS**



**S&S Realty**  
SOLUTIONS



# HOA MONTHLY DUES



### HOA Includes:

- Landscape Maintenance of Common Areas
- Liability Insurance
- Administration / Management

---

**Monthly Total..... \$30.00**

\*This list includes some but not all items covered by your HOA dues.

### Payable to:

**Desert Cliffs HOA**  
 201 E St George Boulevard  
 St. George, UT 84770  
 (435) 628-3950



### At the time of purchase (one-time fee):

New Buyer Administration Fee..... \$50

\*Prices, estimated completion dates, elevations, styles, colors, features, and finished homes may vary from the architectural rendering and are subject to change without notice or obligation. \*Square footage is estimated. [Scan QR CODE for more information on available homes and neighborhoods.](#)



**Agent: Shae Leonard**  
 (435)668-3096 - [shae@ssrealtysolutions.com](mailto:shae@ssrealtysolutions.com)

