

LOT#	SQ. FT.	LEVELS	BEDS	BATHS	GARAGE	EST. DATE*	FOR SALE
230	4456	2	6	4.5	3 Car-RV+Pool	Move-in Ready* / 🏠	SOLD
231	5204	2	5+Theater+Game+Bonus	4.5	3 Car-RV	Apr.'24*	\$1,779,900*
233	5520	2	5+Full Casita+Game+Loft	5.5	5-RV+Shop	Feb.'24*	SOLD
234	4326	2	5+Full Casita	4.5	3-RV	Move-In Ready* / 🏠	\$1,293,900*
235	3790	2	5+Den	4	3 Car-RV	Mar.'24*	SOLD
236	4300	2	5+Office	4.5	3 Car-RV	Jul.'24*	SOLD

TAKE A SELF TOUR OF OUR HOMES WITH NTERNOW. SCAN HERE TO LEARN HOW:



STANDARD FEATURES

INTERIOR

- **GE Stainless Steel Appliances:**
 - Dishwasher, Microwave, Free Standing Range or Cooktop with Wall Oven (As per Plan)
- Energy Saving LED Light Bulbs
- Designer Selected Quartz Counter Tops
- Air Switch in Island for Disposal
- Under-Mount Stainless Steel Kitchen Sink with Garbage Disposal
- Stained Knotty Alder Wood Cabinets
- 36" Tall Base Cabinets
- Soft Close Cabinet Doors and Side Mount Drawer Guides
- 18" Tile Kitchen Backsplash
- Pull Down Delta Essa® Collection Stainless Steel Kitchen Faucet
- Delta® Modern Chrome Faucets Throughout
- Tile Shower & Tub Surrounds with Deco Accent Tile
- Toilet Paper Holders & Towel Bars
- Elongated Toilets in All Baths
- Full Width Mirrors above Vanity
- Luxury Vinyl Plank or Tile Floors in Entry, Kitchen, Nook, Baths & Utility Room
- Decora Light Switches
- Ceiling Fan Pre-wire in all Bedrooms and Living Rooms
- Old World Wall Texture and Stomp Ceiling Texture
- Stair Rail Skirting (As per Two-Story Plan)
- Two-Tone Paint Throughout Home (Garage One-Tone Only)
- Trim - 5" Base, 3" Case
- Elevated Ceilings (As per Plan)

EXTERIOR

- **95% Gas Furnace and 14 SEER A/C Dual Fuel Above Industry Standard of 80% Furnace**

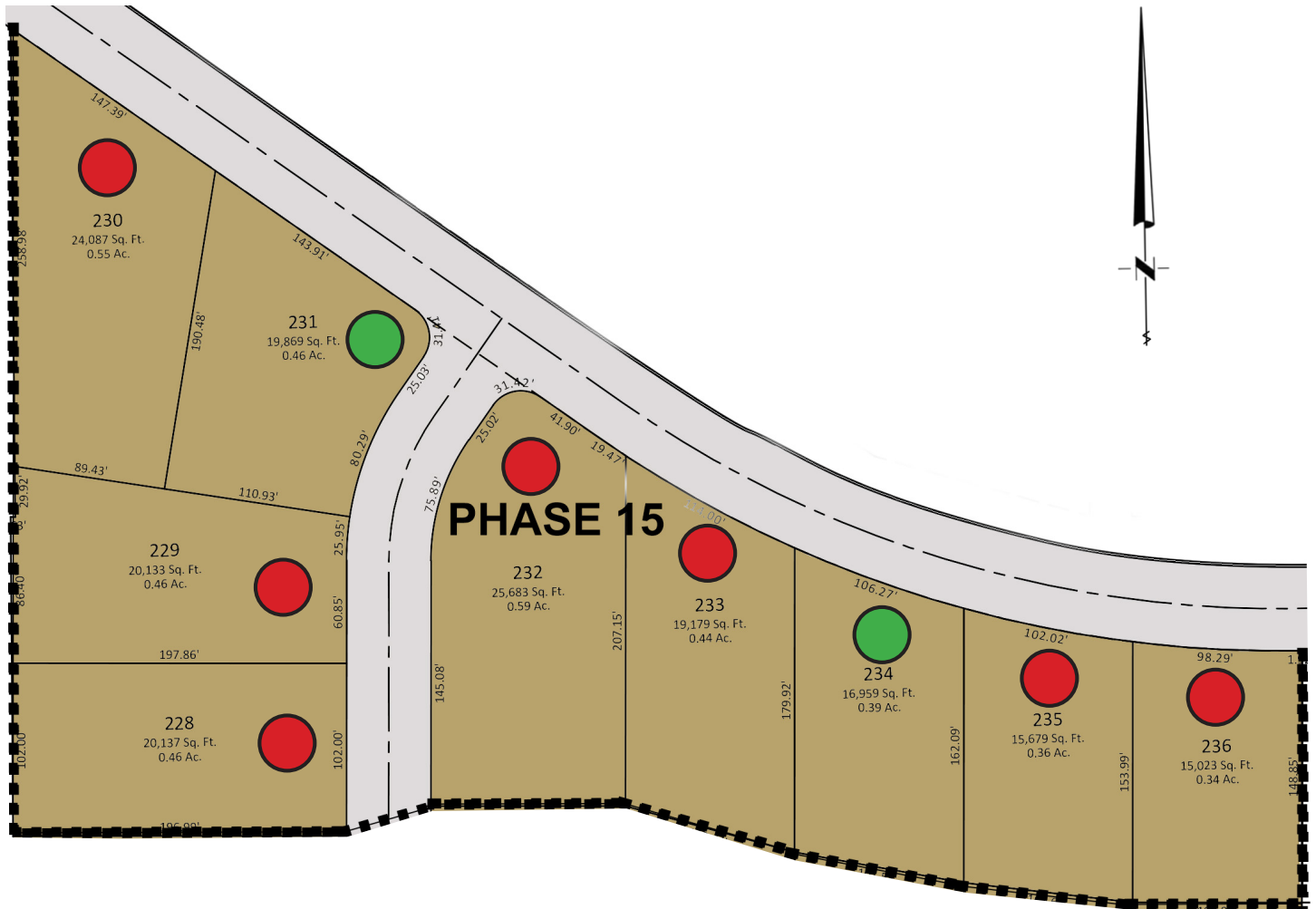
- 50 Gallon Gas Water Heater
- Insulation: R-15 Walls & R-38 Ceiling
- 1" Foam Insulation Thermal/Moisture Barrier on Exterior Walls Adding R-4 to Insulation increasing up to R-19
- Synthetic Stucco Finish Coat
- **Hot Water Recirculation Pump**
- Cultured Stone Accents (per Elevation)
- Rain Gutters
- Border Accents on Driveway
- **Front & Rear Yard Professional Landscaping**
- **Partial Rear Yard Cinder Block Walls**
- Fire Rated Gargage Entry Door
- 8' Fiberglass Stained Front Door
- Low Energy Dual Pane Vinyl Windows
- Fire Resistant Flat Cement Roof Tiles (per Elevation)
- Dead Bolt Locks on All Exterior Doors
- Pre-Plumbed Soft Water Loop
- 8' Designer Selected Insulated Garage Doors with Openers

CONNECTIVITY

- Video Doorbell with iOS/Android Support
- Smart Door Lock with Keypad
- Smart Garage Door Opener
- Prewire for Outdoor Security Cameras
- Smart Programmable Thermostat
- Prewire or Sleeved for Cable, Phone Service and Satellite
- Ethernet and TV Drops run to Great Room(s) and Bedrooms
- Prewire for 5.1 Surround Sound in Living Room

*Prices, estimated completion dates, elevations, styles, colors, features, and finished homes may vary from the architectural rendering and are subject to change without notice or obligation. Square footage is estimated. [Scan, Download & Register for free in the NoviHome App for more information on all our homes and neighborhoods.](#)





FOR SALE

SPEC HOME

FUTURE SPEC

SOLD

*Prices, estimated completion dates, elevations, styles, colors, features, and finished homes may vary from the architectural rendering and are subject to change without notice or obligation. Square footage is estimated. Scan, Download & Register for free in the NoviHome App for more information on all our homes and neighborhoods.



Agent: Shae Leonard
(435)668-3096 - shae@ssrealtysolutions.com

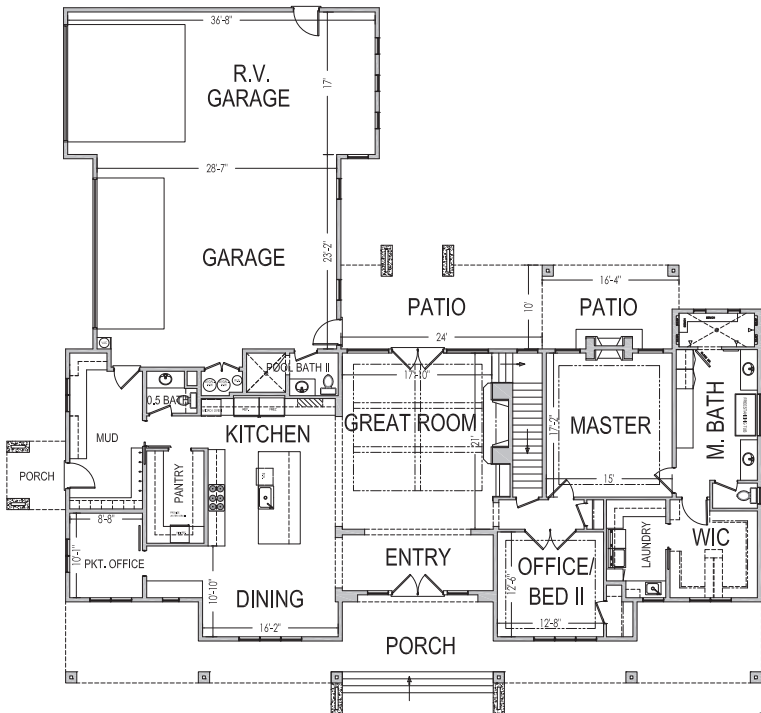


2682 E. Seegmiller Dr.
St. George, UT 84790

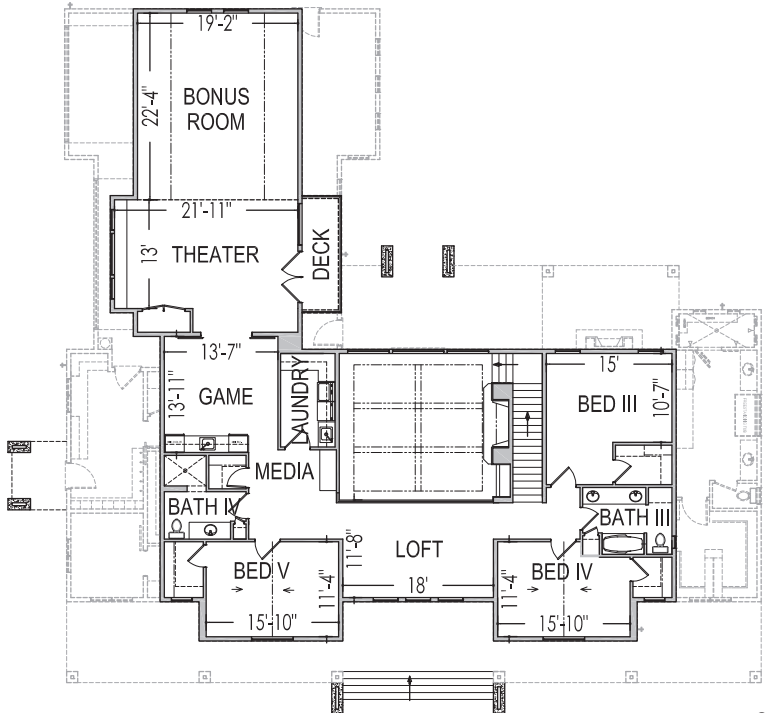


90'x84'

5204 ft.²



2668 ft.²



2536 ft.²

*Prices, estimated completion dates, elevations, styles, colors, features, and finished homes may vary from the architectural rendering and are subject to change without notice or obligation. Square footage is estimated. Scan, Download & Register for free in the NoviHome App for more information on all our homes and neighborhoods.



Agent: Shae Leonard
(435)668-3096 - shae@ssrealtysolutions.com

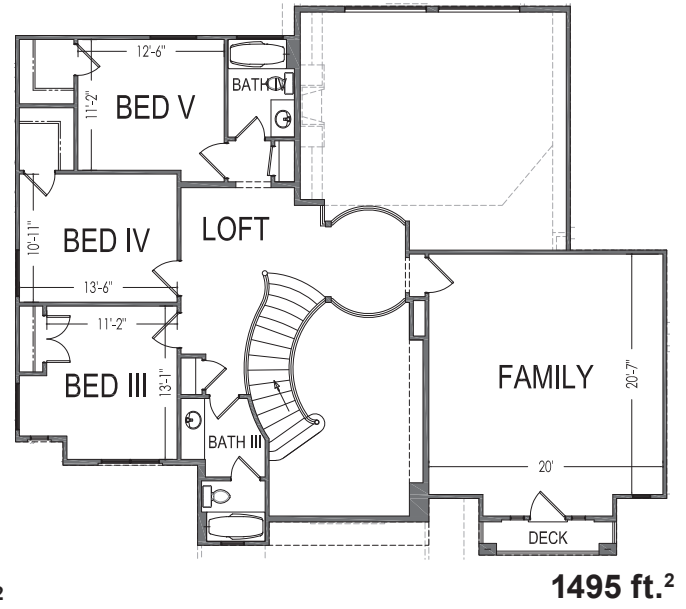
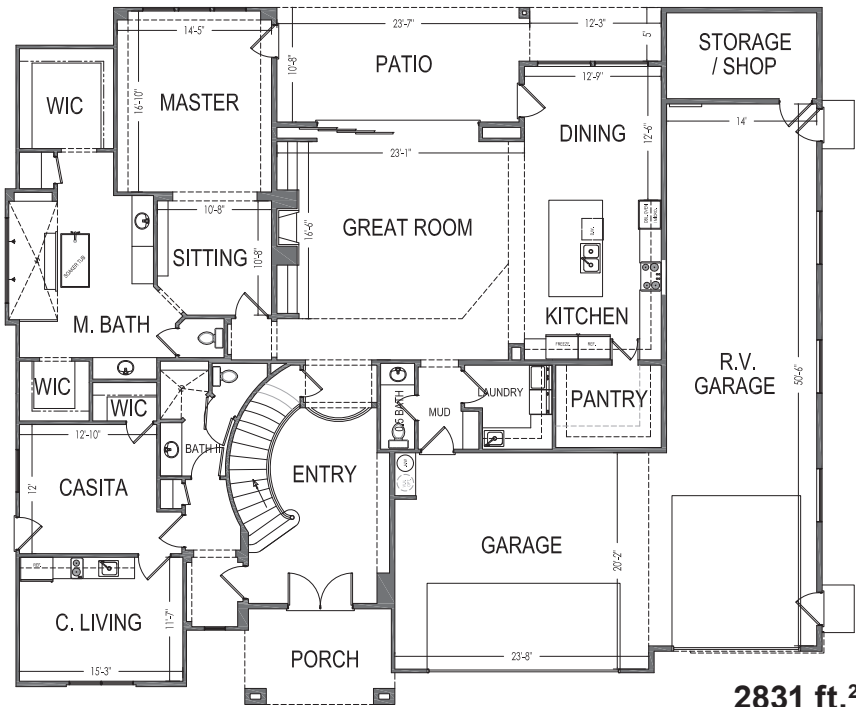


2764 E. Seegmiller Dr.
St. George, UT 84790



76'x65'

4326 ft.²



*Prices, estimated completion dates, elevations, styles, colors, features, and finished homes may vary from the architectural rendering and are subject to change without notice or obligation. Square footage is estimated. Scan, Download & Register for free in the NoviHome App for more information on all our homes and neighborhoods.

